

# Technical Manual



# JBL Control 47LP

## SPECIFICATIONS

### ACOUSTIC & ELECTRICAL SPECIFICATIONS:

- Rated Impedance: 8 Ohms (in bypass mode)
- Power Capacity: 150 Watts Continuous Program Power  
75 Watts Continuous Pink Noise
- Frequency Response: 100 Hz - 17 kHz ( $\pm 3$  dB)
- Frequency Range: 68 Hz - 20 kHz (-10 dB)
- Rated Maximum SPL: 110 dB @ 1 m (3.3 ft) average, 116 dB peak
- Nominal Sensitivity: 91 dB
- Crossover Frequency: 1.8 kHz

### SYSTEM COMPONENTS:

- Cabinet: (Enclosure) Not for Sale
- Grille: 365327-001
- Low Frequency Driver: 165 mm (6.5 in) with polypropylene cone, butyl rubber surround, copper-clad coil, vented aluminum former. (440910-001)
- DC Resistance: 6.02 ohms  $\pm 5\%$
- High Frequency Driver: 25mm (1 in) soft dome w/dampening, ferrofluid-cooled. (440927-001)
- DC Resistance: 4.8 ohms  $\pm 5\%$
- Crossover Network Assembly: 365336-001

### AURAL SWEEP TEST SPECIFICATIONS:

- A. System Aural Sweep Test: 5V Input, 70 Hz - 20 kHz
- B. L.F. Aural Sweep Test: 5V Input, 20 Hz - 1 kHz
- C. HF Aural Sweep Test: 2V Input, 100 Hz - 2 kHz

### PHYSICAL SPECIFICATIONS:

- Enclosure Dimensions: 305 x 142 mm Depth from back of baffle (12 x 5.6 in)
- Cutout Size: 282 mm Diameter (11.1 in)
- Weight: 9.5 lb (4.3 kg)

### WARRANTY INFORMATION:

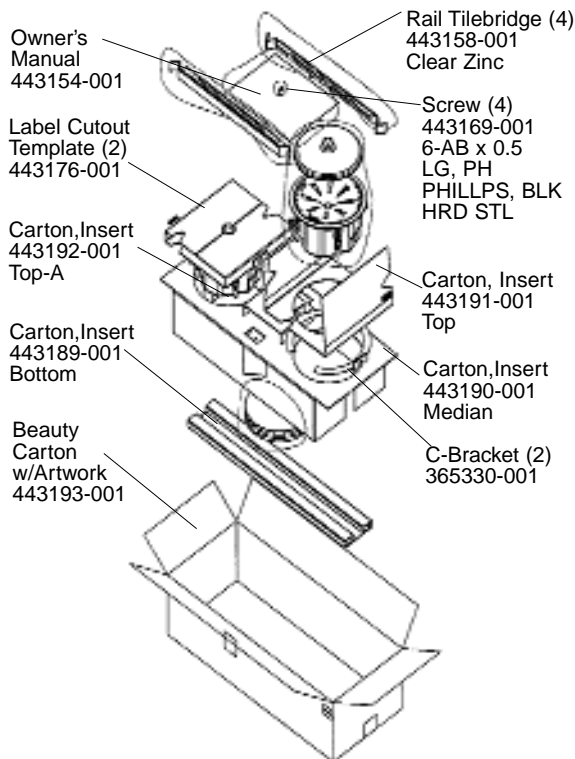
- Refer to Warranty Statement packed with each product.

- Transformer Taps: 60W 30W, 15W, (& 7.5W @ 70V)

## PACKAGE

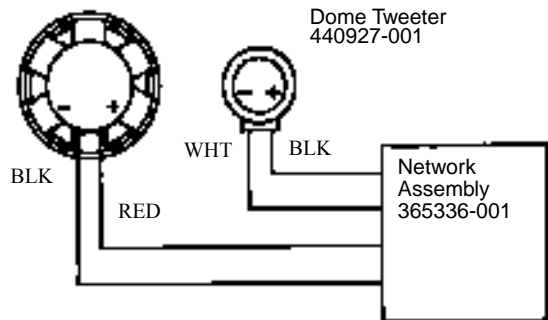
Warranty Card  
59660

### Packaging Assembly

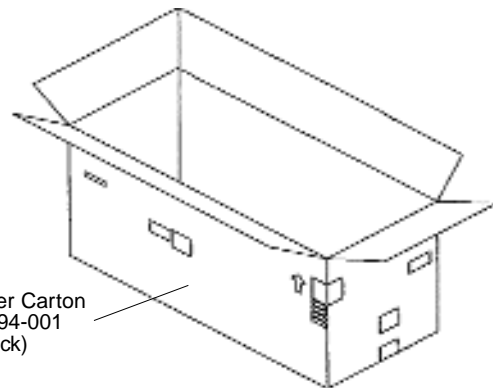


## WIRING DIAGRAM

Driver, Low Freq.  
440910-001



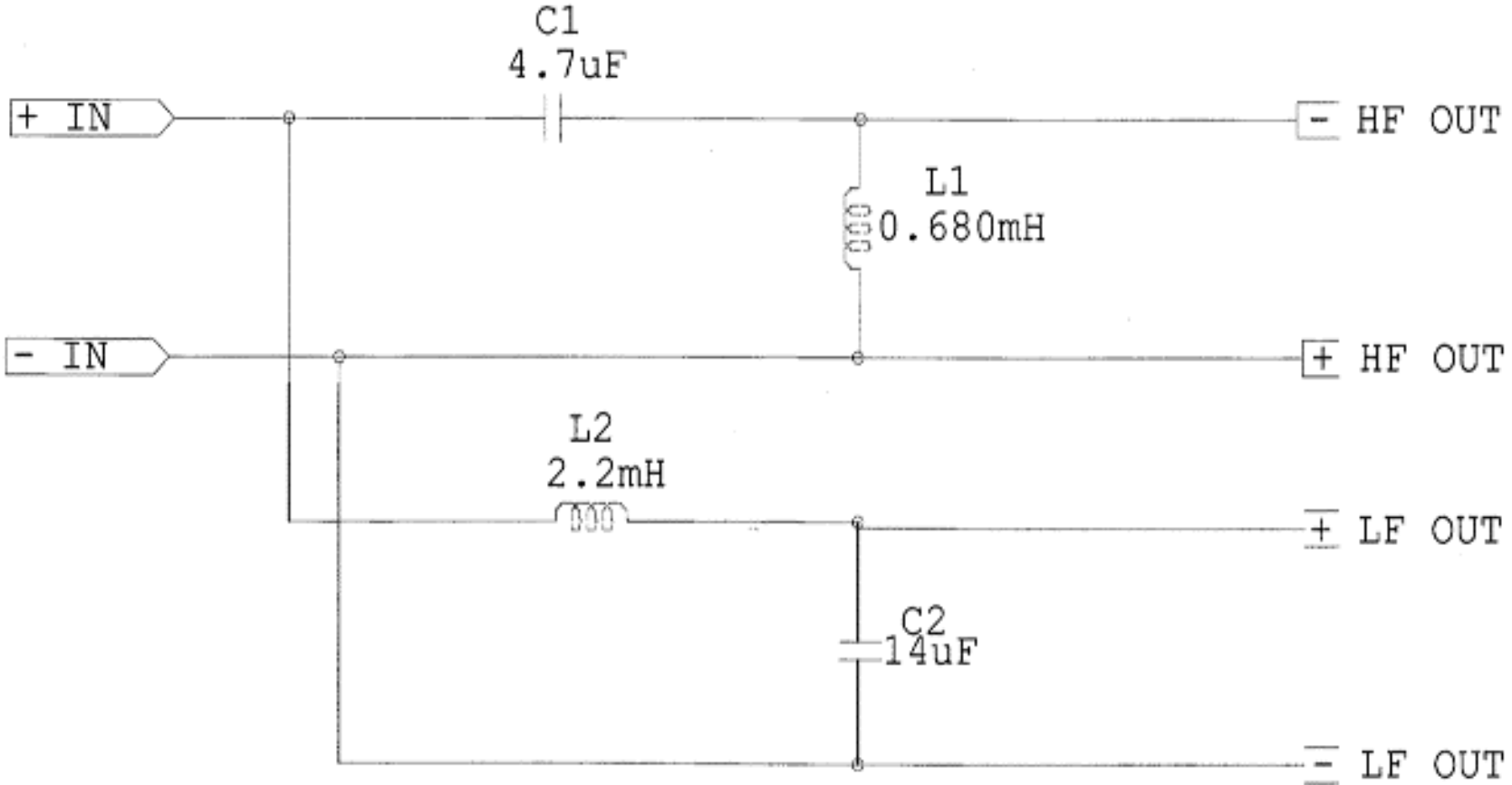
Master Carton  
443194-001  
(2 Pack)



JBL Control 47LP REV A

# JBL Control 47LP

SCHEMATIC (365336-001)

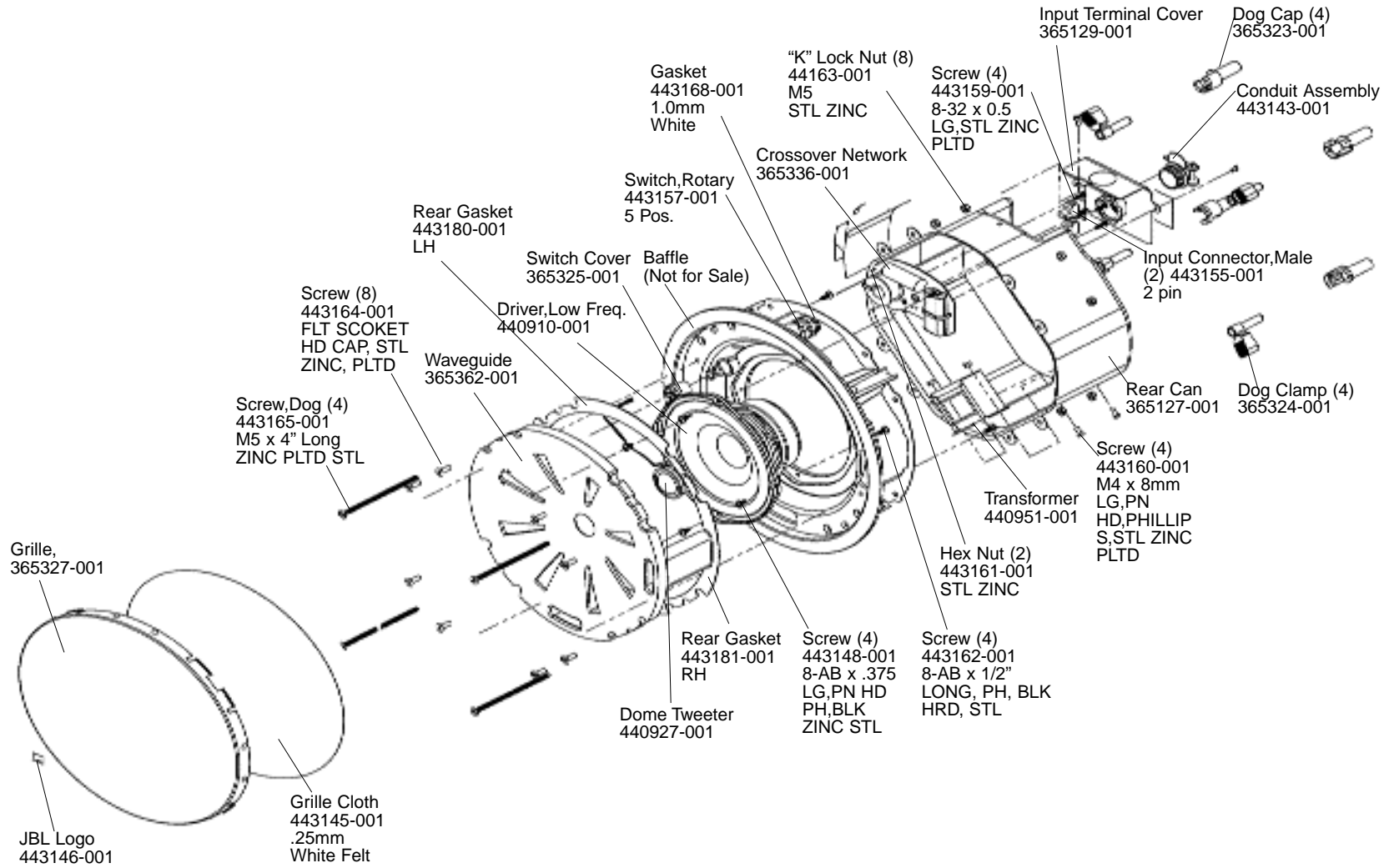


Individual Parts for the above crossover are not available.  
A complete replacement assembly should be ordered.

JBL Control 47LP

# JBL Control 47LP

## COMPONENT EXPLODED VIEW



Glue grille cloth to grille using 3M super 77.