



Ci Series

Installation Manual

Ci200QL / Ci200CL / Ci200QS /
Ci130QS / Ci130CS

F Manuel d'installati on

D Installationshandbuch

I Manuale d'installazione

ES Manual de instalação

P Manual de instalación

NL Installatie

DK Installationsanvisning

PL Podręcznik instalacji

JP 取付説明書

CN 安装手册

TC 安装手册

K 설치 설명서

Introduction

F Utilisation **D** Einleitung **I** Introduzione **ES** Introducción **P** Introdução **NL** Inleiding **DK** Introduktion **PL** Wstęp
JP はじめに **CN** 引言 **TC** 引言 **K** 소개

GB Thank you for purchasing this KEF Ci series custom installation loudspeaker. These products have been designed for dry-lined, stud partition walls and ceilings and for suspended ceilings and will deliver many years of superb sound quality.

F Merci d'avoir choisi les enceintes à installation personnalisée de la série Ci de KEF. Ces produits sont conçus pour des cloisons et plafonds lattés et plâtrés ainsi que pour les faux-plafonds, vous garantissant de nombreuses années de qualité sonore d'exception.

D Vielen Dank, dass Sie sich für diesen Einbaulautsprecher der KEF Ci-Serie entschieden haben. Diese Produkte wurden für Trockenbau-Ständerwände und -decken sowie für Hängedecken entworfen und werden Ihnen über viele Jahre hinweg erstklassige Klangqualität bieten.

I Grazie per aver acquistato l'altoparlante KEF Ci Series dall'installazione personalizzata. Questo prodotto è stato progettato per pareti e soffitti divisorii in cartongesso e per soffitti sospesi. La qualità audio è garantita per lunghi anni.

ES Gracias por haber adquirido los altavoces de instalación personalizada serie Ci de KEF. Estos productos han sido diseñados para paredes divisorias prefabricadas y para falsos techos, garantizándole años de excelente calidad de sonido.

P Obrigado por ter adquirido este altifalante de instalação personalizada KEF série Ci. Estes produtos foram concebidos para paredes divisórias secas, divisórias com armação e tectos falsos e proporcionam um som de qualidade excepcional por longos anos.

NL Hartelijk dank voor de aankoop van deze KEF luidspreker uit de Ci-serie met custom-installatie. Deze producten zijn ontworpen voor installatie in met gipsplaten beklede wanden en plafonds en voor verlaagde plafonds; zij zullen jarenlang zorgen voor een voortreffelijke geluidskwaliteit.

DK Tak fordi du har købt denne KEF Ci-højttaler med mulighed for brugertilpasset montering. Disse produkter er designet til vægge med beklædning mod fugt, skillevægge og sænkede lofter og vil levere fantastisk lyd kvalitet i mange år fremover.

PL Dziękujemy za zakup głośnika do samodzielnej instalacji z serii KEF Ci. Te głośniki zostały zaprojektowane do montażu na ścianach gipsowo-kartonowych, ściankach działowych na stelażu, sufitach oraz sufitach podwieszanych i zapewnią wiele lat doskonałej jakości dźwięku.

JP KEF Ci シリーズカスタム・インストール・ラウドスピーカーをご購入いただき、ありがとうございます。本シリーズは、乾式スタッド壁と天井および吊り天井への取り付けを目的として設計されており、長年にわたって優れた音質をお届けします。

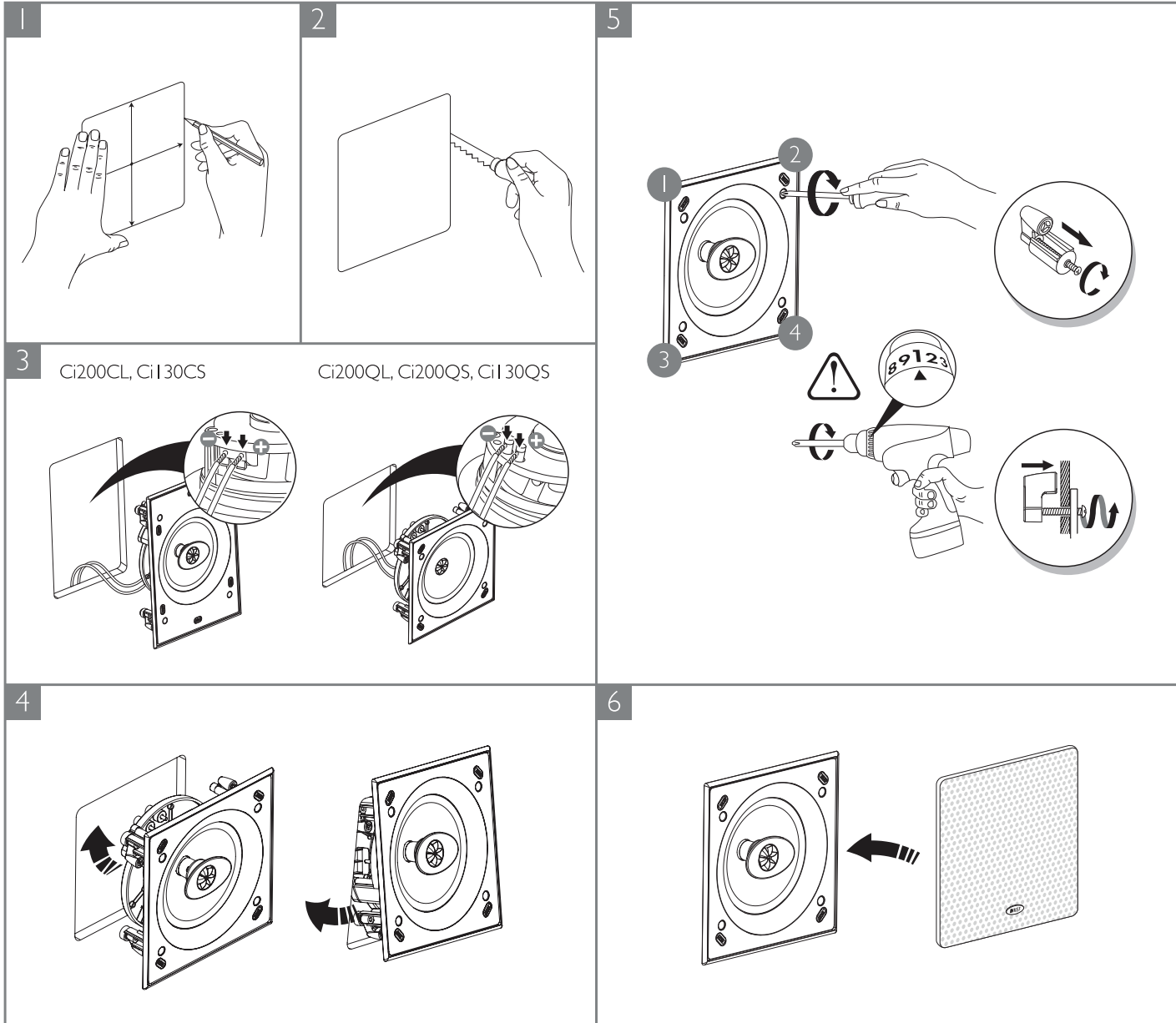
CN 感谢您购买 KEF Ci 系列自定义安装扬声器。该产品专为预制立筋隔断墙和天花板以及吊顶设计，为您带来经久不衰的最佳音质。

TC 感谢您購買 KEF Ci 系列自定义安裝揚聲器。該產品專為石膏立柱式隔間牆和天花板以及懸吊天花板設計，為您帶來經久不衰的最佳音質。

K 사용자 맞춤형 설치를 지원하는 KEF Ci 시리즈 스피커를 구입해 주셔서 감사합니다. 이 제품은 건식벽, 스테드벽 및 일반 천장은 물론 천장틀에도 설치할 수 있도록 설계되었으며, 수년 동안 탁월한 품질의 사운드를 제공할 것입니다.

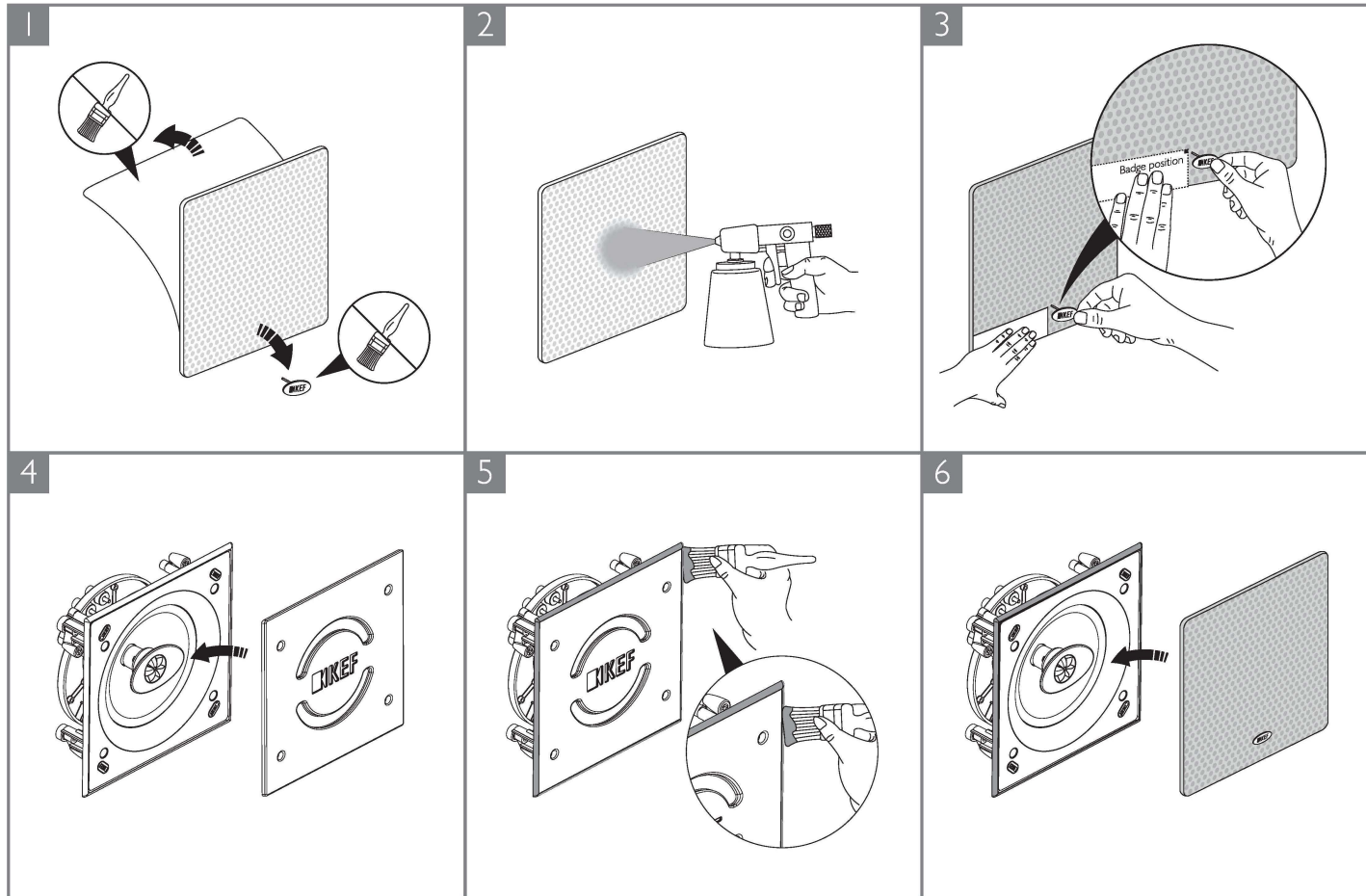
Installation

F Installation **D** Installation **I** Installazione **ES** Instalación **P** Instalação **NL** Montag **DK** Instalation **PL** Instalacja
JP 取り付け **CN** 安装程序 **TC** 安装程式 **K** 설치



Decoration

F Finition **D** Dekoration **I** Estetica **ES** Ornamentación **P** Acabamento **NL** Decoratie **DK** Dekoration **PL** Dekoracja
JP 装飾 **CN** 装饰 **TC** 裝飾 **K** 외부 디자인



Specifications

[F](#) Spécifications
 [D](#) Einleitung
 [I](#) Specifiche
 [ES](#) Especificaciones
 [P](#) Especificações
 [NL](#) Technische
 [DK](#) Dekoration
[PL](#) Dane Techniczne
 [JP](#) 仕様
 [CN](#) 产品规格
 [TC](#) 產品規格
 [K](#) 사양



Model	Ci200QL	Ci200CL	Ci200QS
Series	Q Series	C Series	Q Series
Nominal impedance	8Ω	8Ω	8Ω
Sensitivity (2.83V/1m)	90dB	90dB	90dB
Frequency response (±6dB) open-backed	35Hz - 34kHz	45Hz - 20kHz	35Hz - 34kHz
Crossover frequency	2.5kHz	2.8kHz	2.5kHz
Drive units	LF	200mm (8in.)	200mm (8in.)
	HF	25mm (1in.) Uni-Q	25mm (1in.) Uni-Q
Recommended amplifier power	10 - 150 W	10 - 125 W	10 - 150 W
Product external dimensions (H x W x D)	369 x 273 x 106 mm (14.53 x 10.75 x 4.17 in.)	369 x 273 x 102 mm (14.53 x 10.75 x 4.02 in.)	273 x 273 x 106 mm (10.75 x 10.75 x 4.17 in.)
Cut-out dimensions (H x W)	334 x 238 mm (13.15 x 9.37 in.)	334 x 238 mm (13.15 x 9.37 in.)	238 x 238 mm (9.37 x 9.37 in.)
Net Weight	2.6kg (5.77lbs.)	2.0kg (4.43lbs.)	2.4kg (5.3lbs.)
Mounting depth from surface	99.8mm (3.93in.)	95.9mm (3.78in.)	99.8mm (3.93in.)
Optional rough in frame	RIF200L	RIF200L	RIF200S
Optional rear enclosure	RNC200L	RNC200L	RNC200S

KEF reserves the right, in line with continuing research and development, to amend or change specifications. E&OE.



Model	Ci130QS	Ci130CS
Series	Q Series	C Series
Nominal impedance	8Ω	8Ω
Sensitivity (2.83V/1m)	87dB	87dB
Frequency response (±6dB) open-backed	45Hz - 34kHz	52Hz - 20kHz
Crossover frequency	3.8kHz	4kHz
Drive units	LF	130mm (5.25in.)
	HF	19mm (0.75in.) Uni-Q
Recommended amplifier power	10 - 100 W	10 - 80 W
Product external dimensions (H x W x D)	184 x 184 x 84 mm (7.24 x 7.24 x 3.31 in.)	184 x 184 x 83 mm (7.24 x 7.24 x 3.3 in.)
Cut-out dimensions (H x W)	158 x 158 mm (6.22 x 6.22 in.)	158 x 158 mm (6.22 x 6.22 in.)
Net Weight	1.4kg (3.1lbs.)	1.35kg (3.0lbs.)
Mounting depth from surface	77.9mm (3.07in.)	77.1mm (3.03in.)
Optional rough in frame	RIF130S	RIF130S
Optional rear enclosure	RNC130S	RNC130S

Warning

F Avertissement **D** Warnung **I** Avvertenza **ES** Atención **P** Aviso **NL** Waarschuwing **DK** Advarsel **PL** Ostrzeżenie
JP 警告 **CN** 警告 **TC** 警告 **K** 경고

- GB** Installation should be performed by an installer who is skilled in the proper use of hand and power tools, knowledge of local building and fire codes, and who is familiar with the environment behind the wall or ceiling where the speaker is being installed. No attempt should be made to install these loudspeakers unless you are sure you will not be cutting through electric cables, water or gas pipes, or supporting joists. Ensure the loading on the wall or ceiling will support the weight of these assemblies.
- F** L'installation doit être réalisée par un installateur ayant des qualifications dans la manipulation d'outils à main et électriques, des connaissances sur les codes locaux du bâtiment et des incendies et au courant de ce qui se trouve derrière la cloison ou le plafond où les enceintes seront installées. N'essayez pas d'installer ces enceintes vous-même sauf si vous êtes sûr qu'aucun câble électrique, canalisation d'eau ou de gaz ou sous-poutre ne risquera d'être sectionné. Vérifiez que la charge sur le mur ou le plafond supportera le poids de ces installations.
- D** Der Einbau sollte von einem Installateur vorgenommen werden, der in der fachgerechten Verwendung von Hand- und Elektrowerkzeugen bewandt ist, die örtlichen Bau- und Brandschutzvorschriften kennt und mit der Umgebung hinter der Wand oder der Decke, in die der Lautsprecher eingelassen werden soll, vertraut ist. Unter keinen Umständen sollten Sie versuchen, diese Lautsprecher einzubauen, wenn Sie nicht absolut sicher sind, hierbei keine Stromkabel, Wasser- oder Gasleitungen oder Stützträger zu durchtrennen. Stellen Sie sicher, dass die Wand bzw. Decke ausreichend belastbar ist, um das Gewicht dieser Baugruppen zu tragen.
- I** L'installazione deve essere effettuata da un installatore professionista che sia informato sulle norme di edilizia locale e sulle norme antincendio e che conosca la struttura della parete o del soffitto sul quale verrà installato l'altoparlante. È sconsigliato qualsiasi tentativo di installare gli altoparlanti a meno che non si sia sicuri di non recidere cavi elettrici, condutture di acqua o di gas o i travetti di sostegno. Assicurarsi che la parete o il soffitto possano sostenere il peso degli elementi.
- ES** La instalación debe ser realizada por un instalador con experiencia en el correcto uso de herramientas manuales y eléctricas, con conocimiento de las normativas locales de construcción e incendios, y que sepa lo que se encuentra tras la pared o el techo donde se va a instalar el altavoz. No deberá instalar los altavoces salvo que esté seguro de que no corte cables eléctricos, tuberías de agua o gas, ni afecte a vigas maestras. Compruebe que la pared o el techo pueda soportar el peso de estas instalaciones.
- P** A instalação deve ser efectuada por um instalador com experiência no uso de ferramentas manuais e eléctricas, que conheça as regras locais de prevenção de incêndios em edifícios e saiba o que se encontra no interior da parede ou do tecto falso onde vai instalar o altifalante. Não deve tentar instalar estes altifalantes se não tiver a certeza de que não vai cortar cabos eléctricos, tubos de água ou gás, ou traves de suporte. Certifique-se de que a estrutura da parede ou do tecto suporta o peso destes equipamentos.
- NL** De installatie dient te worden uitgevoerd door een installateur die geschoold is in het correcte gebruik van elektrisch en handgereedschap, die kennis heeft van de plaatselijke bouw- en brandvoorschriften en die op de hoogte is van hetgeen zich achter de wand of plafond bevindt waarin de luidspreker geïnstalleerd wordt. Er dient niet te worden geprobeerd de luidsprekers te installeren wanneer u er niet zeker van bent dat u niet door elektrische kabels of door water- of gasleidingen of steunbalken zaagt. Controleer of de wand of het plafond het gewicht van de units die u wilt installeren, kan dragen.
- DK** Monteringen skal foretages af en montør, som har erfaring med brugen af manuelle og el-værktøjer samt kendskab til lokale byggregler, og som ved, hvad der er bag den væg eller det loft, hvor højttaleren skal monteres. Du må ikke forsøge at montere højttalerne, medmindre du er sikker på, at du ikke kommer til at skære i elektriske kabler, vand- eller gasrør eller bærende loftsbjælker. Du skal sikre, at væggen eller loftet kan bære vægten af de monterede højttalere.
- PL** Instalacja powinna zostać przeprowadzona przez instalatora przeszkolonego w odpowiednim użyciu narzędzi ręcznych i elektrycznych, znającego lokalne przepisy budowlane oraz przeciwpożarowe, zaznajomionego z elementami znajdującymi się za ścianą lub sufitem, na których jest instalowany głośnik. Nie należy rozpoczynać instalacji głośników jeżeli nie ma pewności, że w trakcie instalacji nie zostaną przecięte kable elektryczne, rury wodne lub gazowe albo łączenia wsporników. Należy upewnić się, że ściana lub sufit będzie w stanie wytrzymać obciążenie wynikające z instalacji.
- JP** 本製品の取り付けは、手工具および電動工具を適切に使用でき、地域の建物・消防基準法の知識があり、スピーカーを取り付ける壁および天井の状況をよく知っている設置者が行ってください。電線、水道・ガス管、または梁を破損しないことが確かな場合以外は、取り付けを行わないでください。壁または天井の荷重がスピーカーアセンブリーの重量を支えられることを確かめてください。
- CN** 安装必须由安装人员执行，这些安装人员能够熟练正确地使用手工及电动工具，熟悉当地建筑及消防条例相关知识，并且熟悉扬声器安装外墙后及天花板后的环境情况。在无法保证不切断电线、水管、煤气管或支撑托梁的情况下，请勿尝试安装扬声器。请确保安装所在的墙壁或天花板可承载所有装配的重量。
- TC** 安装必须由安装人员执行，这些安装人员必须能够熟练正确使用手持及电动工具，熟悉当地建筑及消防法规相关知识，并且熟悉扬声器安装处墙后及天花板后的环境情况。在无法保证不切断电线、水管、煤气管或支撑托梁的情况下，请勿尝试安装扬声器。请确保安装所在的墙壁或天花板可负荷所有装配的重量。
- K** 본 제품은 수동 및 전동 공구의 사용이 익숙하고 스피커를 설치하는 벽 또는 천장 내부의 환경에 익숙하며 현지 건축법 및 소방법에 대한 지식을 보유한 기술자가 설치해야 합니다. 스피커를 설치하기 전에 전기 케이블, 수도관, 가스관 또는 지지 장선이 절단되지 않는지 반드시 확인하십시오. 벽 또는 천장이 스피커 설치로 인한 하중을 충분히 지탱할 수 있는지 확인하십시오.



www.kef.com

United Kingdom
GP Acoustics (UK) Limited
Eccleston Road, Tovil, Maidstone
Kent, ME15 6QP U.K.
Tel: +44 (0) 1622 672261
Fax: +44 (0) 1622 750653
Email: info@kef.com

China
GP Acoustics (China) Limited
Room 2202, Diwang Commercial Center
5002 Shennan Road East, Shenzhen, China 518008
Tel: +86 (755) 8246 0746
Fax: +86 (755) 8246 0125
Email: info.kef.cn@gpacoustics.com

Europe (EMEA)
GP Acoustics GmbH
Kruppstr. 82-100, D-45145 Essen, Germany
Tel: +49 (0) 201 17039 0
Fax: +49 (0) 201 17039 100
Email: sales@gpaeu.com

France
GP Acoustics (France) SAS
39 Rue des Granges Galand - BP60414
37554 Saint Avertin CEDEX, France
Tel: +33 (0) 2 47 80 49 01
Fax: +33 (0) 2 47 27 89 64
Email: info.france@kef.com

Hong Kong
GP Acoustics (HK) Limited
6F, Gold Peak Building, 30 Kwai Wing Road
Kwai Chung, N.T., Hong Kong
Tel: +852 2410 8188
Fax: +852 2401 0754
Email: info.kef.hk@gpacoustics.com

Japan
KEF Japan, 1-11-17, Honcho, Koganei-city
Tokyo, Japan. 184-0004
Tel: +81 (0) 42-388-2030
Email: info@kef.jp

Taiwan
GP Acoustics (Taiwan) Limited
Room 4B, 5F, 415, Xingyi Road Sec 4
Taipei 110, Taiwan
Tel: +886 (2) 2723 0868
Fax: +886 (2) 2723 0818
Email: info.kef.tw@gpacoustics.com

USA
GP Acoustics (US) Inc.
10 Timber Lane, Marlboro, New Jersey 07746 U.S.A.
Tel: +1 (732) 683 2356
Fax: +1 (732) 683 2358
Email: sales@kefamerica.com

KEF and Uni-Q are registered trademarks. Uni-Q and other KEF technologies are protected by worldwide patents. All text and image copyrights reserved. KEF reserves the right, in line with continuing research and development, to amend or change specifications. E&OE.

Product Overview

The KEF Ci200QL is a premium high performance speaker designed for in-ceiling and flush mount installations where a rectangular shaped assembly is preferred. It's a coincident point source design featuring KEF's proprietary "sit-anywhere" Uni-Q® technology with a driver array that includes a 25mm high frequency aluminium dome tweeter mounted in the acoustic centre of the 200mm low frequency woofer. The tweeter features KEF's Tangerine Waveguide engineered to enhance high frequency dispersion and when combined with the Uni-Q array, creates a speaker that delivers exceptionally smooth and consistent coverage across a wide listening area. The KEF Ci200QL is constructed using weather resistant components and the Ultra-Thin Bezel and grille are treated with a UV protective finish making this speaker ideal for hi-fidelity applications in premium commercial venues such as luxury hotels, conference centres, and restaurants.



Key Features

KEF "sit-anywhere" Uni-Q® Technology – This proprietary driver array places the tweeter in the acoustic centre of the woofer delivering wide dispersion with consistent sound characteristics throughout the space. Because the high and low frequencies originate from the same point, acoustic lobing problems common to other speaker designs are virtually eliminated allowing fewer speakers to deliver smooth coverage across a wide listening area.

Tangerine Waveguide – In addition to protecting the driver, the Tangerine Waveguide further enhances dispersion allowing for 115 degrees of coverage

Weather Resistant – Manufactured using a proprietary plating and powder coating process, the KEF Ci200QL is UV protected and designed to withstand the harshest operating environments.

Ultra-Thin Bezel (UTB) – To maintain a premium aesthetic appearance, the ABS bezel was carefully engineered to be as thin as possible while maintaining the necessary structural rigidity.

Magnetic Grille – For security and ease of installation the grille attaches by a powerful magnetic circuit and can be painted to match any décor.

IP64 Certification – The speaker passed official IEC testing to ensure that splashing water would have no harmful effects on assembly components.

Architect and Engineer Specifications

The speaker shall be designed for in-ceiling flush mount installations and utilise a coincident point source design with the high frequency tweeter mounted in the acoustic centre of the low frequency woofer. The driver array shall be mounted in a rectangle shaped assembly.

The speaker shall consist of a 200mm low frequency woofer and a vented 25mm aluminium dome high frequency tweeter featuring a waveguide for improved dispersion mounted in a UV protected ABS baffle with a paintable bezel of no more than 5mm in width. The grille shall also be paintable, include a paint shield, and attach by a powerful magnetic circuit for ease of installation and security. The speaker design shall be open back and deliver a minimum frequency response of 35Hz - 34kHz +/- 6 dB. The speaker shall not weigh more than 2.6kg and be available with a rough in frame kit.

The nominal impedance of the speaker shall be 8 ohms and it must achieve a minimum pressure sensitivity of 90 dB SPL at 1 meter on-axis with an input of 2.83 volts. The crossover frequency between the woofer and tweeter shall be 2.5kHz. The speaker shall meet numerous safety and performance standards listed by regulatory bodies around the world.

The speaker shall be the KEF Ci200QL.

Specifications

Model	Ci200QL	
Series	Q Series	
Nominal impedance	8Ω	
Sensitivity (2.83V/1m)	90dB	
Frequency response (±6dB) open-backed	35Hz - 34kHz	
Nominal coverage	115°	
Max SPL	107dB	
Crossover frequency	2.5kHz	
Drive units	LF	200mm (8in.) Uni-Q
	MF	-
	HF	25mm (1in.)
Recommended amplifier power	10 - 150 W	
Recommended high-pass filter	40Hz	
Product external dimensions (H x W x D)	369 x 273 x 105.9mm (14.53 x 10.75 x 4.17in.)	
Cut-out dimensions (H x W)	330 x 234mm (12.99 x 9.21in.)	
Mounting depth from surface	99.8mm (3.93in.)	
Net Weight	2.6kg (5.77lbs.)	
Optional rough in frame	RIF200L	
Optional rear enclosure	RNC200L	
Ideal rear volume	60L	
Minimum rear volume	35L	

Visit KEF.COM for more about KEF and its products.

KEF reserves the right, in line with continuing research and development, to amend or change specifications. E&OE.

The Ci speakers that utilise THX in the model name have undergone and passed certified THX approval.

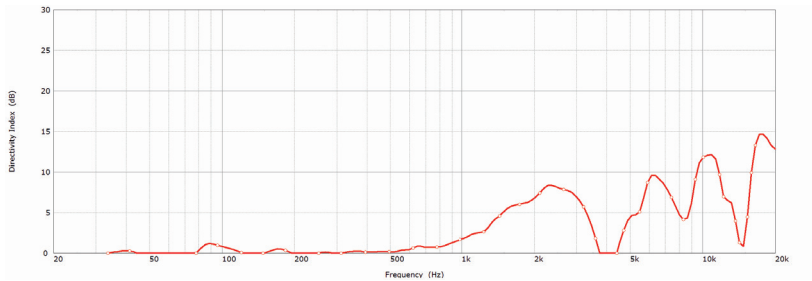
Ci200QL

Architectural Speaker

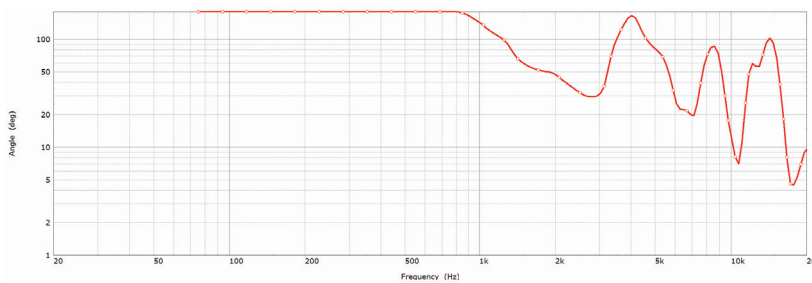


OBSESSED WITH HIGH RESOLUTION

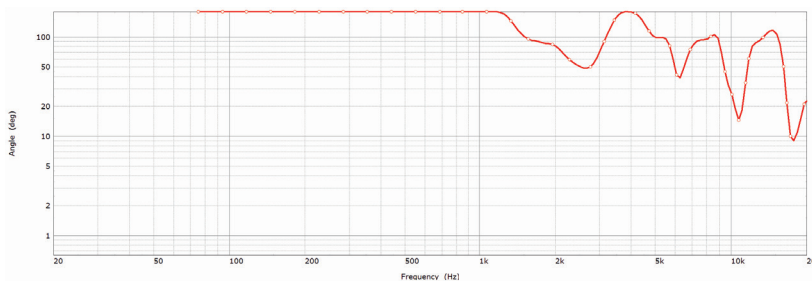
Directivity Index



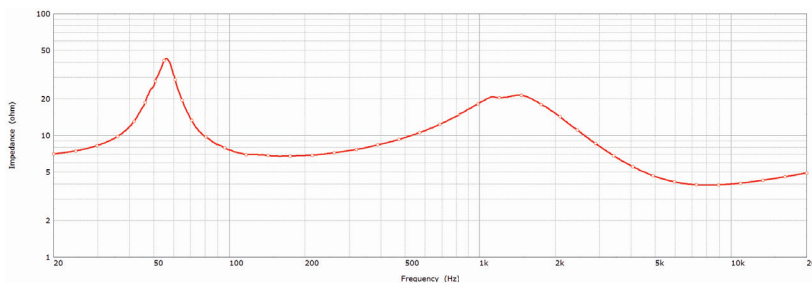
Beamwidth -3dB



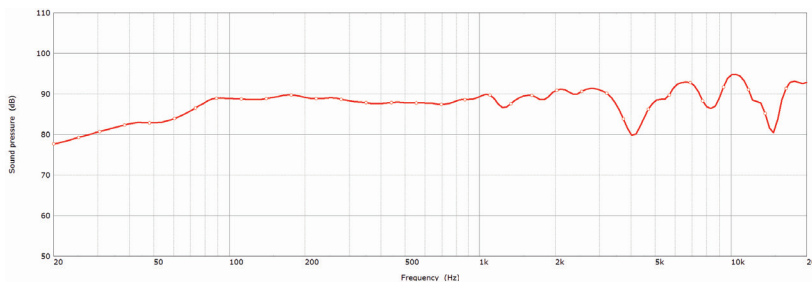
Beamwidth -6dB



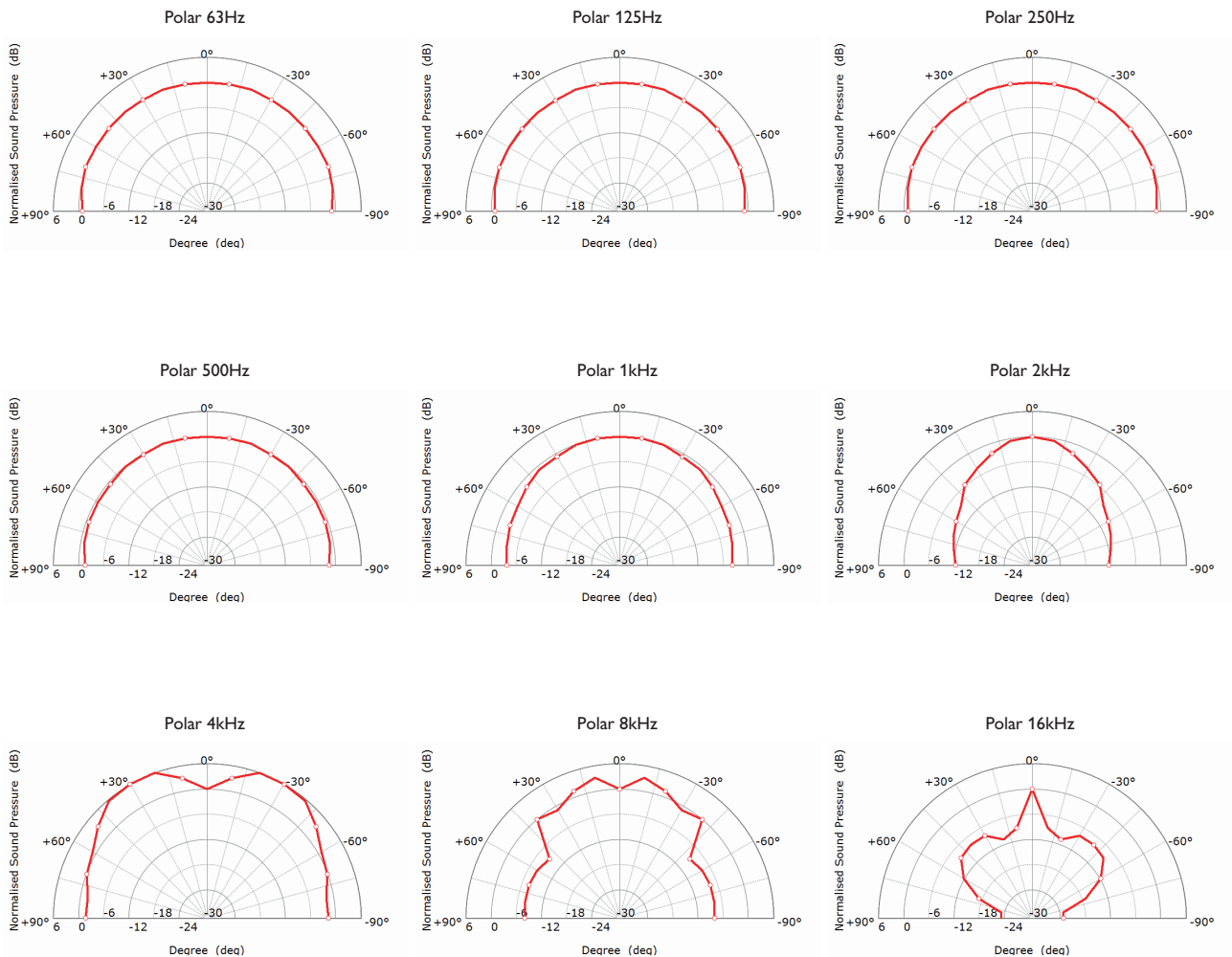
Impedance



Sensitivity (2.83V/1m)



Polar Responses



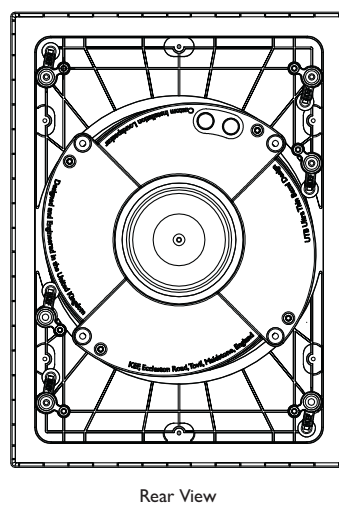
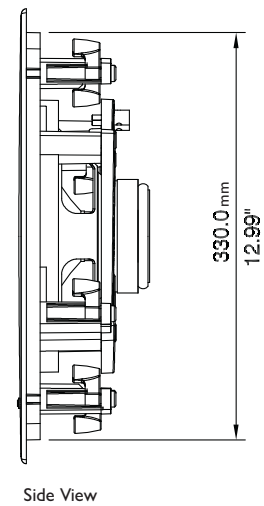
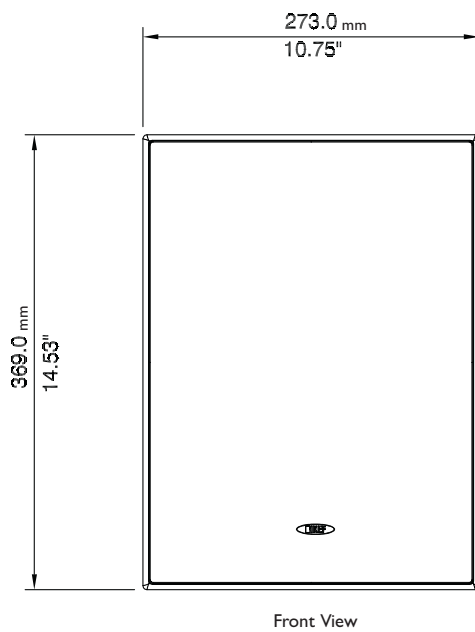
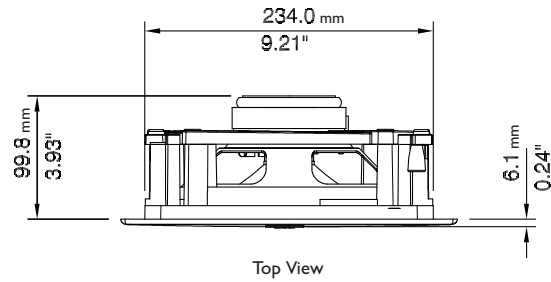
Ci200QL



Architectural Speaker

OBSESSED WITH HIGH RESOLUTION

Mechanical Diagrams



Dimensions in mm (inches)

KEF reserves the right, in line with continuing research and development, to amend or change specifications. E&OE.



OBSESSED WITH HIGH RESOLUTION

Ci specifications sheet

Rectangle



Model	Ci200QL	Ci160QL	Ci160.2CL
Series	Q Series	Q Series	C Series
Nominal impedance	8Ω	8Ω	8Ω
Sensitivity (2.83V/1m)	90dB	89dB	89dB
Frequency response (±6dB) open-backed	35Hz - 34kHz	38Hz - 34kHz	52Hz - 20kHz
Frequency range (-10dB)	32Hz - 30kHz	32Hz - 30kHz	47Hz - 45kHz
Nominal coverage (degrees)	115°	125°	120°
Max SPL (dB)	107dB	105dB	104dB
Crossover frequency	2.5kHz	3.0kHz	2.5kHz
Drive units	LF	200 mm (8 in.) Uni-Q	160 mm (6.5 in.) Uni-Q
	HF	25 mm (1 in.)	19 mm (0.75 in.)
Recommended amplifier power	10 - 150 W	10 - 125 W	10 - 100 W
Recommended high-pass filter (Hz)	40Hz	45Hz	50Hz
Product external dimensions (H x W x D)	369 x 273 x 106 mm (14.53 x 10.75 x 4.17 in.)	303 x 223 x 97.5 mm (11.93 x 8.78 x 3.84 in.)	303 x 223 x 91 mm (11.93 x 8.78 x 3.58 in.)
Cut-out dimensions (H x W)	334 x 238 mm (13.15 x 9.37 in.)	274 x 194 mm (10.79 x 7.64 in.)	274 x 194 mm (10.79 x 7.64 in.)
Net weight	2.6 kg (5.77 lbs)	2.05 kg (4.51 lbs)	1.87 kg (4.12 lbs)
Mounting depth from surface	99.8 mm (3.93 in.)	91 mm (3.58 in.)	84.5 mm (3.33 in.)
Optional rough in frame	RIF200L	RIF160L	RIF160L
Optional rear enclosure	RNC200L	RNC160L	RNC160L
Ideal Rear Volume (L)	60L	25L	35L
Minimum Rear Volume (L)	35L	15L	20L
Certification	IP64	IP64	IP64

Not all models / finishes are available in all markets. Contact your local dealer for specific range details.
KEF reserves the right, in line with continuing research and development, to amend or change specifications. E&OE.



OBSESSED WITH HIGH RESOLUTION

KEF Ci Cabinet Volume Table

KEF Ci Models	Reasonable LF Response Minimum Cabinet Volume			Ideal LF Response Minimum Cabinet Volume		
	Litre	Cubic Feet	Cubic Metre	Litre	Cubic Feet	Cubic Metre
THX Extreme Home Theatre						
Ci5160REF-THX Ci5160RL-THX	40	1.41	0.040	90	3.18	0.090
Ci3160RL-THX	30	1.06	0.030	60	2.12	0.060
Ci200RR-THX Ci200RS-THX	10	0.35	0.010	20	0.71	0.020
Ci4100QL-THX	7	0.25	0.007	15	0.53	0.015
Ci - T Series						
Ci160TR Ci160TS	1	0.04	0.001	3	0.11	0.003
Ci - Q Series						
Ci130QR Ci130QS	10	0.35	0.010	15	0.53	0.015
Ci160QR Ci160QS Ci160QL	15	0.53	0.015	25	0.88	0.025
Ci200QS Ci200QR Ci200QL	35	1.24	0.035	60	2.12	0.060
Ci - C Series						
Ci130.2CR Ci130.2CS	12	0.42	0.012	20	0.71	0.020
Ci160.2CR Ci160.2CS Ci160.2CL	20	0.71	0.020	35	1.24	0.035
Ci200.2CR Ci200.2CS	30	1.06	0.030	60	2.12	0.060
Ci - E Series						
Ci130ER	12	0.42	0.012	20	0.71	0.020
Ci160ER	20	0.71	0.020	35	1.24	0.035
Ci200ER	30	1.06	0.030	60	2.12	0.060
Soundlight						
Ci50R	0.5	0.02	0.001	3	0.11	0.003
Ci100.2QR 80mm woofer *	0.75	0.03	0.001	5	0.18	0.005
Ci100QS 100mm woofer	2.5	0.09	0.003	6	0.21	0.006
Dual Stereo						
Ci160CRds Ci160CSds	20	0.71	0.020	35	1.24	0.035
Ci Subwoofers						
Ci3160RLb-THX Subwoofer	40	1.41	0.040	80	2.83	0.080
Ci200QSb-THX Subwoofer **	20	0.71	0.020	32	1.13	0.032
Ci200TRb-THX Subwoofer	35	1.24	0.035	60	2.12	0.060

* 0.75L is the volume of back can of Ci100.2QR. To achieve Ideal volume, back can needs to be removed.

** Figures for single unit only. Double the figure for application in pair.

Registration Card

Thank you for choosing KEF. Please take a moment to help us by completing this card and return it to the address on the front of this Warranty Card. Alternatively you can register your KEF product(s) online at www.kef.com

Name (Mr/Mrs/Ms): _____

Address: _____

Postcode: _____

Country: _____

Daytime Tel: _____

Product Purchased: _____

Finish: _____

Serial No.: _____

Purchase Date (D/M/Y): _____

Price Paid (inc. Tax): _____

Retailer Name: _____

Retailer Address: _____

From time to time we would like to contact you with info on new products. If you do not wish to be included on our mailing list, please tick here.

Warranty Registration Card



GP Acoustics (UK) Ltd.,
Eccleston Road, Tovil, Maidstone, Kent.
ME15 6QP. UK

Telephone: +44 (0) 1622 672261
Fax: +44 (0) 1622 750653

In the UK only:
FREEPOST MA 1332,
Eccleston Road, Tovil, Maidstone, Kent. ME15 6BR

www.kef.com

For Your Records

Please copy the serial number(s) of the KEF product(s) you have purchased:

Loudspeakers: _____

Subwoofer: _____

DVD Unit: _____

Other: _____

Purchase Date: _____

Dealer Name: _____

Dealer Phone: _____

Dealer Address: _____

Personal Details

All information supplied is treated as confidential.

Occupation: _____

Age / Sex:

M

F

Under 18

18-24

25-34

35-50

51-65

Over 65

Have you ever purchased KEF products before?

Current KEF owner

Yes

No

If yes, which product? _____

Former KEF owner

Yes

No

If yes, which product? _____

How were you made aware of KEF?

What is your reason for purchasing KEF products?

Please tell us which magazines you read regularly, including hi-fi magazines:

Were you satisfied with the quality of service you received from the retailer?

Very satisfied

Satisfied

Dissatisfied

Very Dissatisfied

Please list any additional audio equipment you use, including the brand:

Please use this space to comment on the KEF product(s) you have purchased:

Warranty in other countries may vary. Contact your local distributor for details. In case of difficulty, please contact your nearest regional office, as listed below.

WARNING

Do not entrust any repair work to unauthorised persons. The components necessary to maintain the original performance of this product are available only through KEF authorised dealers and distributors. The warranty will be invalidated if the equipment is interfered with or incorrect parts substituted.

For a listing of current KEF Authorised Distributors world-wide, kindly contact:-

IN UK:

GP Acoustics (UK) Ltd.,
Eccleston Road, Tovil, Maidstone, Kent ME15 6QP, U.K.
Tel No.: +44 (0) 1622 672261
Fax No.: +44 (0) 1622 750653

IN NORTH AMERICA:

GP Acoustics (US) Inc.,
10 Timber Lane, Marlboro, New Jersey 07746 U.S.A.
Telephone +(1) 732 683 2356
Fax: +(1) 732 683 2358

IN ASIA:

GP Acoustics (HK) Ltd.,
6F, Gold Peak Building, 30 Kwai Wing Road, Kwai Chung, N.T., Hong Kong.
Telephone +(852) 2410 8188
Fax: +(852) 2401 0754

IN ALL OTHER AREAS:

GP Acoustics GmbH, Heinrichstraße 51, D-44536 Lünen, Deutschland.
Telephone + 49 (0) 231 9860-320
Fax: + 49 (0) 231 9860-330

All KEF products are precision engineered and should give years of enjoyment. However, in the unlikely event it should be required, passive KEF products are guaranteed against FAULTY MATERIAL AND/OR WORKMANSHIP for a period of 5 (FIVE) years from the date of original purchase. Electronics are guaranteed against FAULTY MATERIAL AND/OR WORKMANSHIP for a period of 1 (ONE) year from the date of original purchase. Note: Subwoofers contain passive elements and active electronic elements. All warranties are subject to the following restrictions.

1. This warranty is only valid in the country of purchase and applies to the first purchaser only.
2. That the equipment has not been disassembled, modified or tampered with by any person other than an expressly authorised representative of GP Acoustics (UK) Limited.
3. That the equipment has not been abused or operated in conjunction with unsuitable, inappropriate or faulty apparatus.
4. That the equipment has not suffered mechanical damage or derangement in transit.
5. That the Serial Number label(s) have not been defaced or removed.

Should service be required:

Notify the dealer from whom you purchased the equipment and arrange with them for your product to be serviced. If deemed necessary, have him arrange onward shipment to GP Acoustics (UK) Limited or an authorised distributor if he confirms the need for factory attention. If asked to return products for inspection and/or repair, pack carefully, preferably in the original cartons and return prepaid. If the original packaging is not used, GP Acoustics (UK) Limited may make a charge for the supply of new packaging.

Do not despatch goods without the prior agreement of the dealer, GP Acoustics (UK) Limited or their authorised distributors.

Insurance is recommended as goods are returned at owner's risk. GP Acoustics (UK) Limited or their authorised distributors cannot be held liable for loss or damage in transit.

Packing, insurance and freight on the return journey will be paid by GP Acoustics (UK) Limited if factory attention proves to be necessary.

Failure to register in no way limits or invalidates the warranty, but in the event of service being required, delay may result since our Service Department cannot begin Warranty work until the original sale has been verified.

KEF products are covered for warranty repairs within the country of purchase according to the terms of this warranty. The owner will be responsible for repair costs in any country other than where purchased.

This warranty is in addition to and in no way detracts from your statutory rights as a consumer.

For North America Only

All KEF products are precision engineered and built to provide years of enjoyment. The KEF Limited Warranty for passive (non-electronic) products lasts for a period of Five (5) Years from the date of original purchase, against FAULTY MATERIAL AND/OR WORKMANSHIP. The KEF Limited Warranty for Electronic Products, Systems and Powered Speaker Components and Accessories is for a period of One (1) Year from the date of original purchase. Powered speaker products, such as Powered Subwoofers, have a One (1) Year Limited Warranty for the Electronics and a Five (5) Year Limited Warranty for the Driver(s).

The KEF Limited Warranty is subject to the following restrictions:

This Limited Warranty is only valid in the original country of purchase. This Limited Warranty is non-transferable, and is valid for the original purchaser. The product must have been purchased from an Authorized KEF Dealer. If you are concerned about your purchase you may confirm the status of an Authorized Dealer by calling: GP Acoustics US Inc., the exclusive distributor of KEF products in the USA, at (732) 683-2356.

What we will do

Should your KEF loudspeaker fail to function properly due to manufacturing defect, KEF, at its sole discretion, will Repair or Replace it free of charge.

How to obtain service

Should service be required, contact the Authorized KEF Dealer from whom you purchased the equipment and have him arrange warranty repair or shipment to GP Acoustics US Inc. In the event that shipment to GP Acoustics US Inc. becomes necessary, return the product prepaid, only after receiving a Return Authorization Number by calling 732-683-2356.

Please include a written description of the defect, your name and return address, and a copy of your original Sales Receipt which clearly shows the date of purchase. We strongly recommend that speakers be packed in their original cartons and packing material and that all shipments be insured. (GP Acoustics US Inc. can not be responsible for loss or damage in shipment). Your product will be returned as soon as any necessary repairs or replacement have been made.

What is not covered

This warranty does not cover products which have been:

1. Damaged due to Accident, Excessive moisture, Lightning, Power Surges, Unauthorized Tampering, Alteration or Modification.
2. Overloaded, Abused, Misused or Operated with faulty or unsuitable equipment.
3. Products which have had the serial number removed or those purchased from non-authorized dealers.

Limitation on Liability

Where permitted, the provisions of the Limited Warranty are in lieu of any other written warranty, whether expressed or implied, including any warranty of merchantability or fitness for a particular purpose. IN NO EVENT SHALL THE WARRANTOR BE LIABLE FOR INCIDENTAL OR CONSEQUENTIAL DAMAGES, whether damages result from breach of express or implied warranties, tort, negligence or otherwise. Some states do not allow exclusion or limitation of incidental or consequential damages so the above limitation or exclusion may not apply to you. This warranty gives you specific legal rights, and you may also have other rights which vary from state to state or country to country.

The maximum liability of KEF shall not exceed the actual purchase price of the product shown on the original sales receipt.