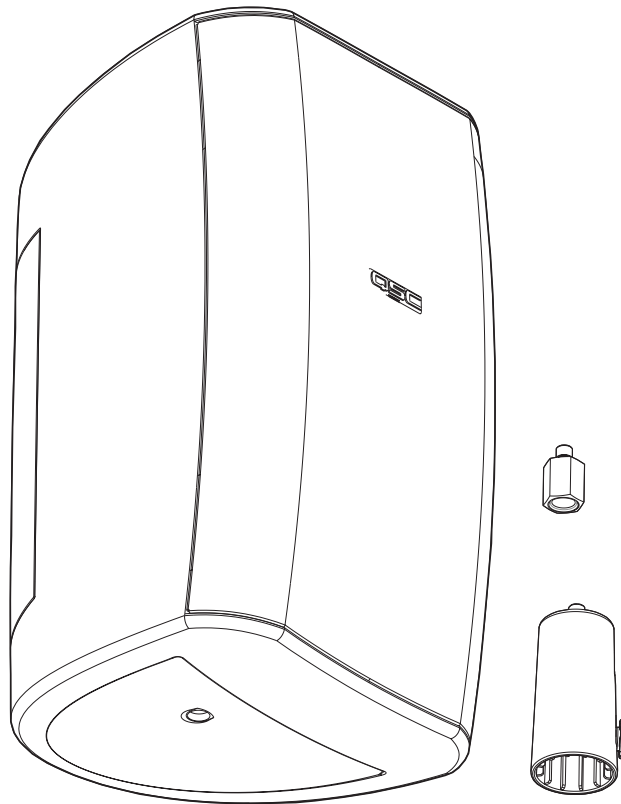




ISIS Series High Performance Portable Loudspeaker

I-82H

203 mm (8") two-way
With Speakon® inputs,
pole cup and
mic stand adapter

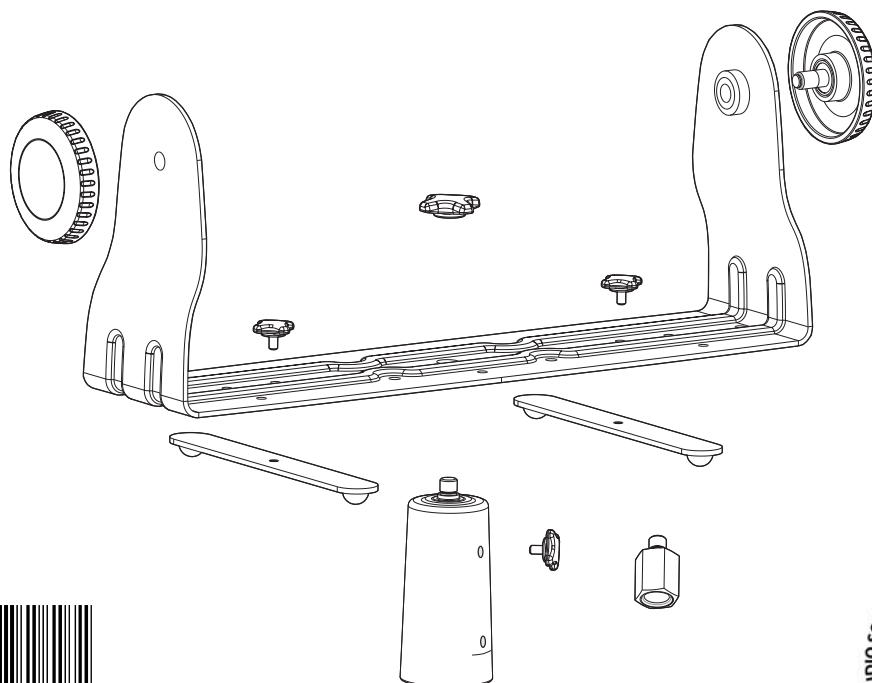


User Manual

EN

I-YM8

Optional Accessory Kit
Multi-purpose yoke mount/ floor monitor hardware



TD-000140-00 rev.A



IMPORTANT SAFETY PRECAUTIONS & EXPLANATION OF SYMBOLS

- 1- Read these instructions.
- 2- Keep these instructions.
- 3- Heed all warnings.
- 4- Follow all instructions.
- 5- Clean only with a dry cloth.
- 6- Install in accordance with QSC Audio Product's instructions and a licensed, professional engineer.
- 7- Do not install near any heat sources such as radiators, heat registers, stoves, or other apparatus (including amplifiers) that produce heat.
- 8- Only use attachments/accessories from QSC Audio Products, Inc.
- 9- Use only with mounts or brackets specified by QSC Audio Products.
- 10- Refer all servicing to qualified personnel. Servicing is required when the apparatus has been damaged in any way.



The lightning flash with arrowhead symbol within an equilateral triangle is intended to alert the user to the presence of uninsulated "dangerous" voltage within the product's enclosure that may be of sufficient magnitude to constitute a risk of electric shock to humans.



The exclamation point within an equilateral triangle is intended to alert the user to the presence of important operating and maintenance (servicing) instructions in this manual.



WARNING! Before placing, installing, rigging, or suspending any speaker product, inspect all hardware, suspension, cabinets, transducers, brackets and associated equipment for damage. Any missing, corroded, deformed or non-load rated component could significantly reduce the strength of the installation, placement, or array. Any such condition severely reduces the safety of the installation and should be immediately corrected. Use only hardware which is rated for the loading conditions of the installation and any possible short-term unexpected overloading. Never exceed the rating of the hardware or equipment. Consult a licensed, professional engineer when any doubt or questions arise regarding a physical equipment installation.

Warranty (USA only; other countries, see your dealer or distributor)

Disclaimer

QSC Audio Products, Inc. is not liable for any damage to amplifiers, or any other equipment that is caused by negligence or improper installation and/or use of this loudspeaker product.

QSC Audio Products 3 Year Limited Warranty

QSC Audio Products, Inc. ("QSC") guarantees its products to be free from defective material and / or workmanship for a period of three (3) years from date of sale, and will replace defective parts and repair malfunctioning products under this warranty when the defect occurs under normal installation and use - provided the unit is returned to our factory or one of our authorized service stations via pre-paid transportation with a copy of proof of purchase (i.e., sales receipt). This warranty provides that the examination of the return product must indicate, in our judgment, a manufacturing defect. This warranty does not extend to any product which has been subjected to misuse, neglect, accident, improper installation, or where the date code has been removed or defaced. QSC shall not be liable for incidental and/or consequential damages. This warranty gives you specific legal rights. This limited warranty is freely transferable during the term of the warranty period.

Customer may have additional rights, which vary from state to state.

In the event that this product was manufactured for export and sale outside of the United States or its territories, then this limited warranty shall not apply. Removal of the serial number on this product, or purchase of this product from an unauthorized dealer, will void this limited warranty.

Periodically, this warranty is updated. To obtain the most recent version of QSC's warranty statement, please visit www.qscaudio.com.

Contact us at 800-854-4079 or visit our website at www.qscaudio.com.

© Copyright 2003, QSC Audio Products, Inc.

QSC® is a registered trademark of QSC Audio Products, Inc.

"QSC" and the QSC logo are registered with the U.S. Patent and Trademark Office

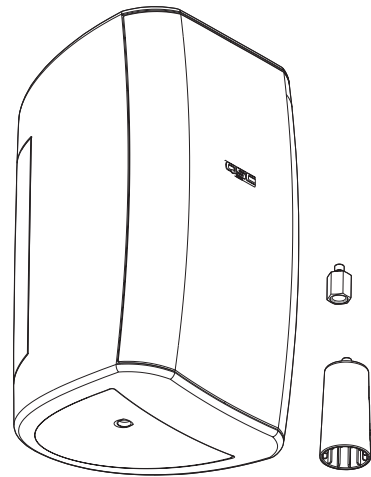
Speakon® is a registered trademark of Neutrik Inc. All trademarks are the property of their respective owners.

I-82H Introduction

Thank you and congratulations on your purchase of the ISIS Series I-82H High Performance Portable Loudspeakers. This product represents the state-of-the-art in lightweight sound reinforcement loudspeaker systems. To get the most from your investment, we encourage you to review this manual carefully.

The I-82H loudspeaker system is a full range, high output, two-way design delivering superior sound quality and high SPL in a lightweight, attractive enclosure. Equipped with two Speakon® connectors, connection is fast and reliable with parallel connection of multiple cabinets literally a snap. These loudspeakers make an excellent choice for a wide variety of applications.

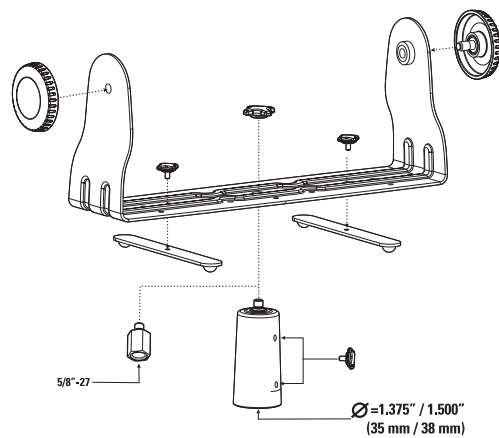
Two mounting adapters are provided; a pole cup that accepts 1.375" or 1.500" (35 mm or 38 mm) pole diameters and a 5/8"-27 mic stand adapter (fits most mic and boom stand hardware). The pole cup is equipped with a retaining knob to secure the adapter to the pole. Also included are four self-adhesive rubber feet for the bottom of the enclosure.



EN

I-YM8 Optional Yoke Mount / Floor Monitor Kit

The optional I-YM8 Accessory Kit provides a yoke mount suitable for pole mounting and a pair of swivel extension feet for use as floor or stage monitors. The included pole cup or mic stand adapter can be attached to the yoke mount using the included knob as well as standard truss clamps for additional mounting options.

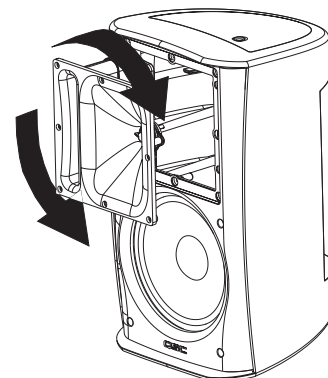
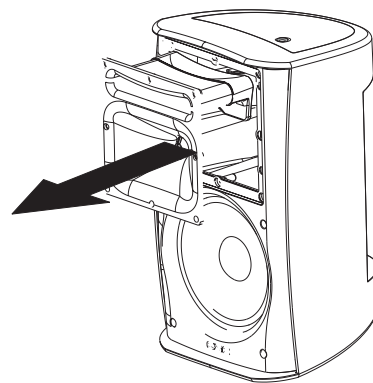


Coverage Angles

Before mounting the loudspeaker, determine the mounting orientation and desired coverage angles. As supplied from the factory, the loudspeaker's coverage angles are 90° (horizontal) x 60° (vertical) with the cabinet oriented vertically. The waveguide can be rotated to interchange the coverage angles.

Rotating the Waveguide to Alter HF Coverage Pattern

- 1- Remove the grill. Gently and evenly work the grill out of its retaining groove to avoid bending the grill.
- 2- Remove the eight waveguide retaining screws. A #2-size Phillips screwdriver is recommended.
- 3- Reach into the waveguide's port and pull gently to remove the waveguide. Be careful not to damage the connections, wiring, or the gasket between the waveguide and the cabinet.
- 4- Rotate the horn 90° clockwise or counter clockwise and set it back in place. Make certain the wiring is not stressed or pulled loose from its connections.
- 5- Before reinstalling the waveguide screws, lift the assembly a small distance and make sure that the gasket is properly in place. Reposition it, if required. Set the waveguide in place and reinstall the screws. Do not overtighten.
- 6- Replace the grill.



Logo Badge Rotation

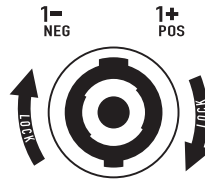
The logo badge on the grill screen can be removed, rotated, and reinstalled. Using your fingers, pull the logo badge straight out. Rotate to the desired position and push back into place.

Connection

The I-82H has two Speakon® NL4-type connectors wired for full range, passive operation. Connect the amplifier's + and - outputs directly to the Speakon's 1+ and 1- terminals.

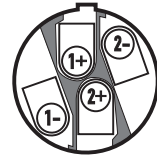
The two connectors are wired in parallel to make parallel cabinet connection easy. Your amplifier must be able to safely power the lower impedance of parallel-connected loudspeakers.

Speakon™ Socket Pinout



Pin 1+ : Positive
Pin 1- : Negative

Speakon™ Plug Pinout



Pin 1+ : Positive
Pin 1- : Negative

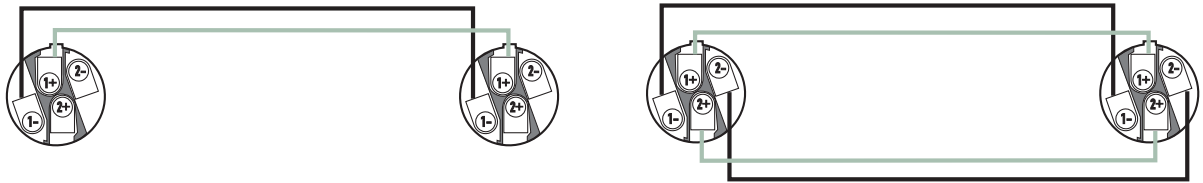
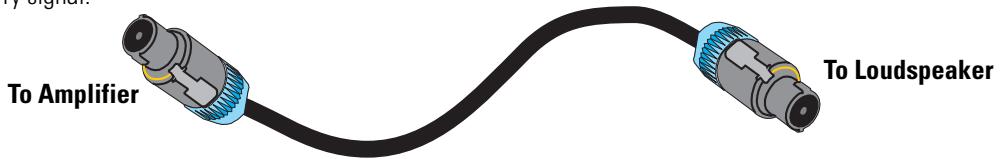


The I-82H is not wired for biamp operation. Do not connect biamplified equipment to the I-82H.

EN

NL4 to NL4 Wiring (two- and four-conductor cables)

Two- or four-conductor cable may be used for Speakon to Speakon connections. Four-conductor cable can be used, but the extra conductors do not carry signal.



Banana to NL4 Wiring



1/4" Phone to NL4



Maintain proper speaker and amplifier connection polarity throughout the entire system. All positive-marked loudspeaker terminals should be connected to positive-marked amplifier output terminals. This will provide the best possible low-frequency output from your system.

Mounting

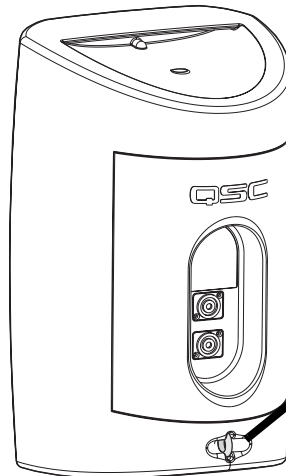
Stand Alone Mounting

If using the loudspeaker only, it can be set on any appropriate surface. The cabinet will lean back at a slight angle when set on a flat surface. Install the four self-adhesive rubber feet on the cabinet bottom to stabilize the loudspeaker and to help prevent it from moving due to cabinet vibration at high output levels.

On the back of the loudspeaker, near the bottom, is a safety cable attachment point. Install a safety cable strong enough to support several times the weight of the loudspeaker assembly in the event it may fall. The cable must be secured to a secondary support point which is also strong enough to support several times the loudspeaker's weight.



IMPORTANT! ENSURE THAT THE LOUDSPEAKER IS MOUNTED PROPERLY AND A SAFETY CABLE IS INSTALLED TO RETAIN THE LOUDSPEAKER IN THE EVENT OF A MOUNTING FAILURE.



Ensure the mounting surface and supporting structure are appropriately strong enough to support the loudspeaker assembly and any potential vibration or seismic activity.

Attach a safety cable to the attachment point on the bottom-back of the loudspeaker. Ensure the safety cable, cable attachment technique, securing hardware, and attachment points are strong enough to support several times the weight of the loudspeaker in the event of a primary-mount failure.

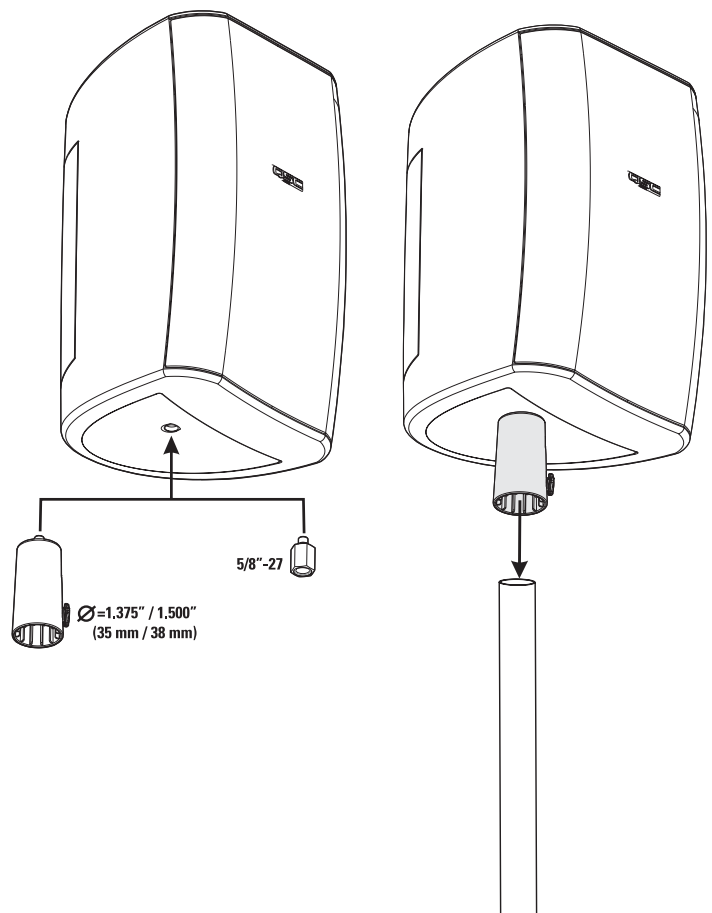
EN

Pole Cup

The included pole cup will fit 1.375" and 1.500" (35 and 38 mm) diameter poles. To use the pole cup, thread the adapter into the insert on the bottom of the loudspeaker. Ensure the adapter is secure before mounting on pole. Set the pole cup onto the pole and make sure the pole seats fully into the adapter. 1.500" (38 mm) poles will seat about 2" (50 mm) deep in the adapter, and 1.375" (35 mm) poles will seat about 4" (100 mm) deep in the adapter. Make sure the set screw retaining knob is in the correct hole for the pole size used and that it is tightened.

5/8"-27 Mic Stand Adapter

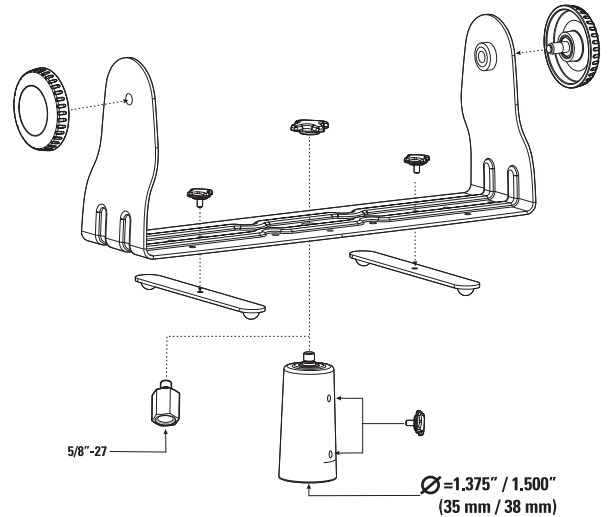
The mic stand adapter is intended for use with large-base tripod microphone stands.



Optional I-YM8 Accessory Kit

The I-YM8 Accessory Kit includes a yoke mount bracket, two loudspeaker retaining knobs, two swivel feet with retaining knobs, mic stand adapter, pole cup and retaining knob.

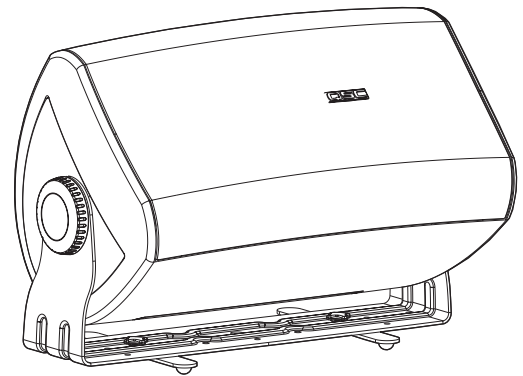
The I-YM8 Accessory Kit enables you to mount the loudspeaker to most any surface using the yoke mount bracket, or use as a floor monitor by attaching the two swivel feet. If wall mounting the yoke, we recommend removing the swivel feet. The yoke mount bracket may be attached to the pole cup, mic stand adapter, or a standard truss clamp.



EN

Floor Monitor Use

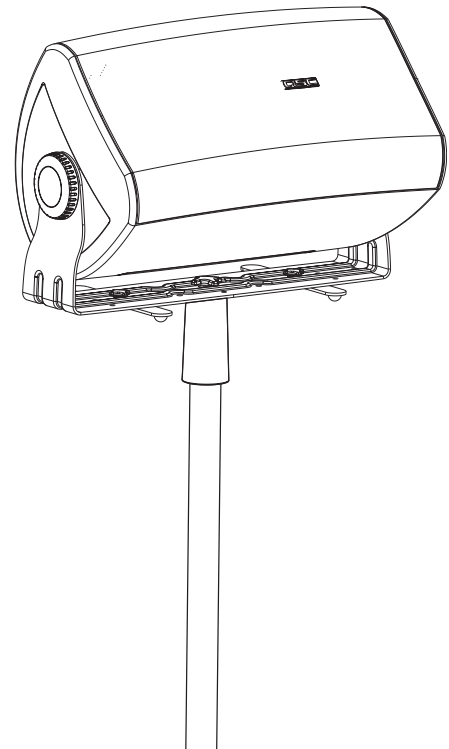
Attach the two swivel feet using the retaining knobs provided. Use any of the holes along the centerline of the bracket, one toward each end. Rotate the feet into place and tighten the knobs to prevent rattling. Attach the loudspeaker and secure in place with the large retaining knobs.



Pole Cup Use

For pole cup use, attach the pole cup to the yoke mount bracket. Use the intermediate-sized retaining knob to secure the adapter to the yoke using the large hole in the center of the bracket.

Attach the loudspeaker and secure in place with the large retaining knobs. Make sure the swivel feet are tight or removed completely to prevent rattling.

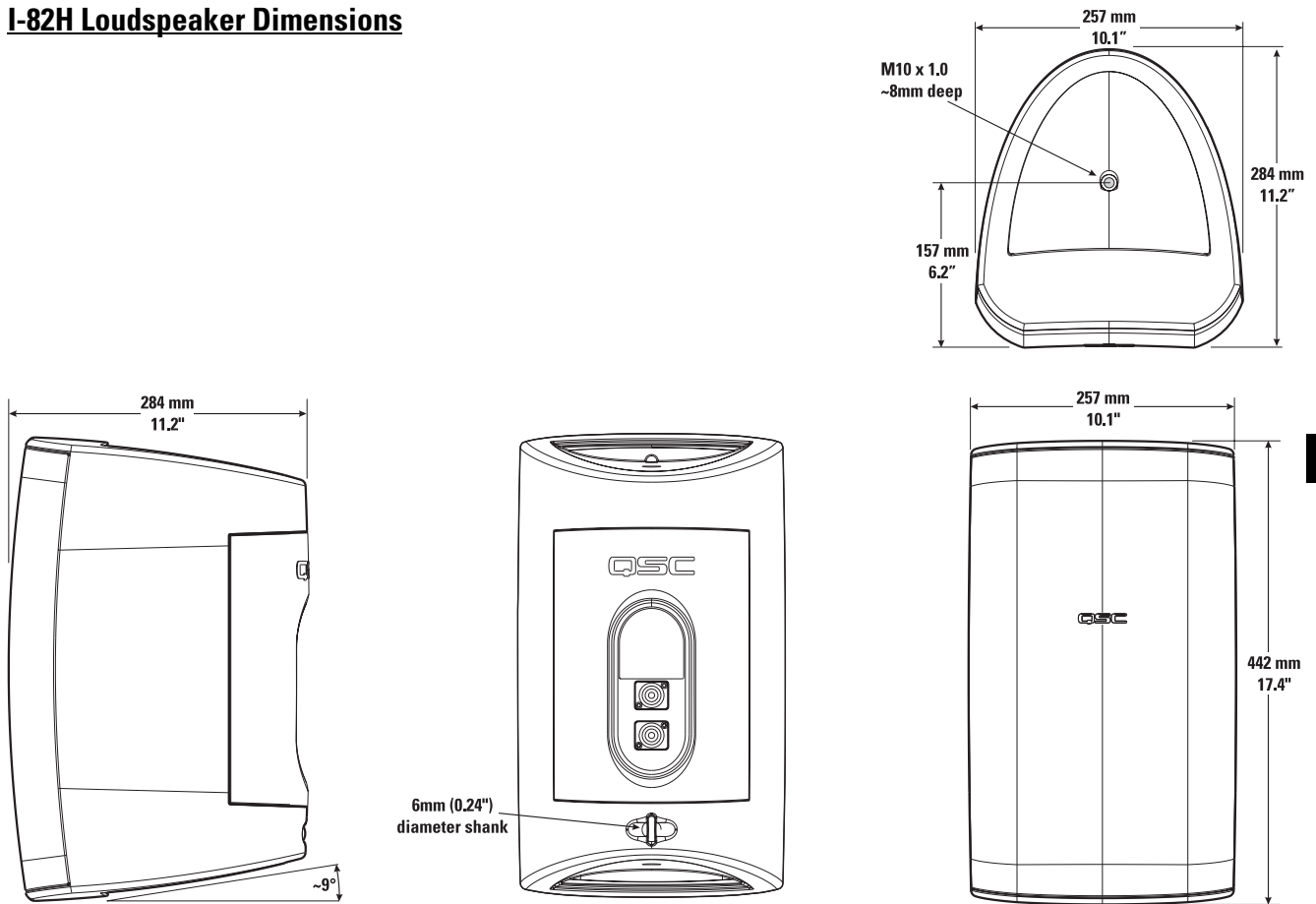


IMPORTANT! ENSURE THE LOUDSPEAKER IS MOUNTED PROPERLY AND A SAFETY CABLE IS INSTALLED TO RETAIN THE LOUDSPEAKER IN THE EVENT OF A MOUNTING FAILURE.

Ensure the mounting surface and supporting structure are strong enough to support the loudspeaker assembly during any potential vibration or seismic activity.

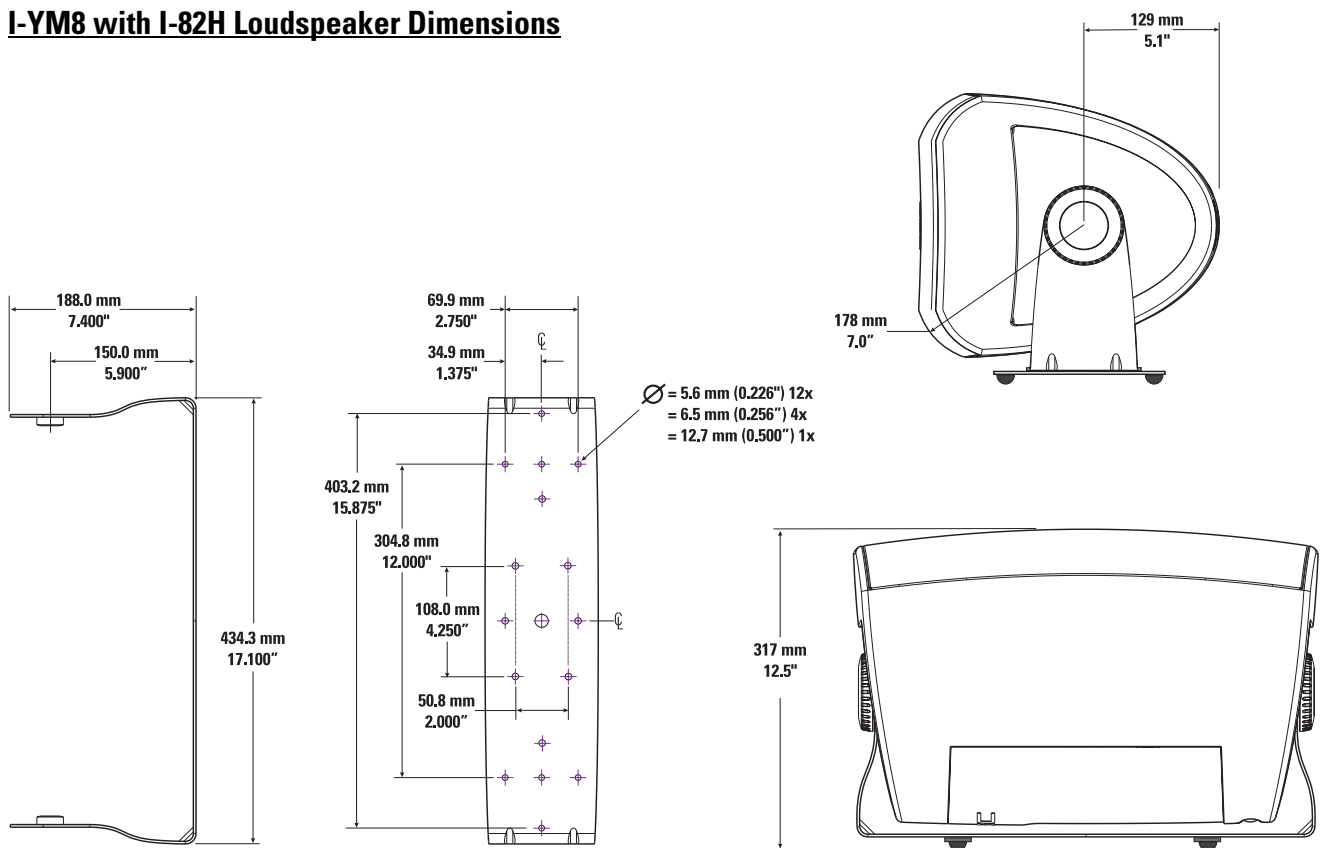
Attach a safety cable to the attachment point on the bottom-back of the loudspeaker. Ensure the safety cable, cable attachment technique, securing hardware, and attachment points are strong enough to support several times the weight of the loudspeaker in the event of a primary-mount failure.

I-82H Loudspeaker Dimensions



EN

I-YM8 with I-82H Loudspeaker Dimensions



Specifications

Frequency Response:	80- 21k Hz (-6 dB) 60- 22k Hz (-10 dB)
Maximum Output: (calculated)	113 dB SPL continuous rms output 119 dB SPL peak output
Impedance:	8 ohms nominal 7.0 ohms minimum, 210 Hz 135 ohms maximum
Power Rating: rms (IEC 100 hrs): recommended amp power:	200 watts rms 400 watts rms
Sensitivity:	90.5 dB, 1 watt, 1 meter, free field (4 pi)
Directivity Index:	500 Hz 4.0 1000 Hz 5.5 2000 Hz 11.7 4000 Hz 8.9 8000 Hz 8.6 16000 Hz 7.2
Q:	500 Hz 2.5 1000 Hz 3.6 2000 Hz 14.7 4000 Hz 7.7 8000 Hz 7.3 16000 Hz 5.3
Weight:	I-82H: 17.5 lb. net, 20.5 lb. shipping I-YM8: 2.8 lb. net, 5.0 lb. shipping
Nominal Coverage:	90° horiz. x 60° vert., waveguide can be rotated 90°
Enclosure and Grill:	high impact polystyrene, removable metal grill, logo badge can be rotated
Connectors:	two (2) Neutrik Speakon NL4FC connectors wired in parallel, +signal: pin 1+, - signal: pin 1-
Mounting Hardware:	Included: Pole cup (attaches to loudspeaker bottom or optional yoke mount, fits 1.375" or 1.500" (35 mm or 38 mm) diameter poles) and 5/8"-27 mic stand adapter. Optional: Yoke mount with retaining knobs, two swivel feet for using yoke mount as stage monitor, pole cup (attaches to loudspeaker bottom or optional yoke mount, fits 1.375" or 1.500" (35 mm or 38 mm) diameter poles) and 5/8"-27 mic stand adapter, and retaining knob for pole cup.

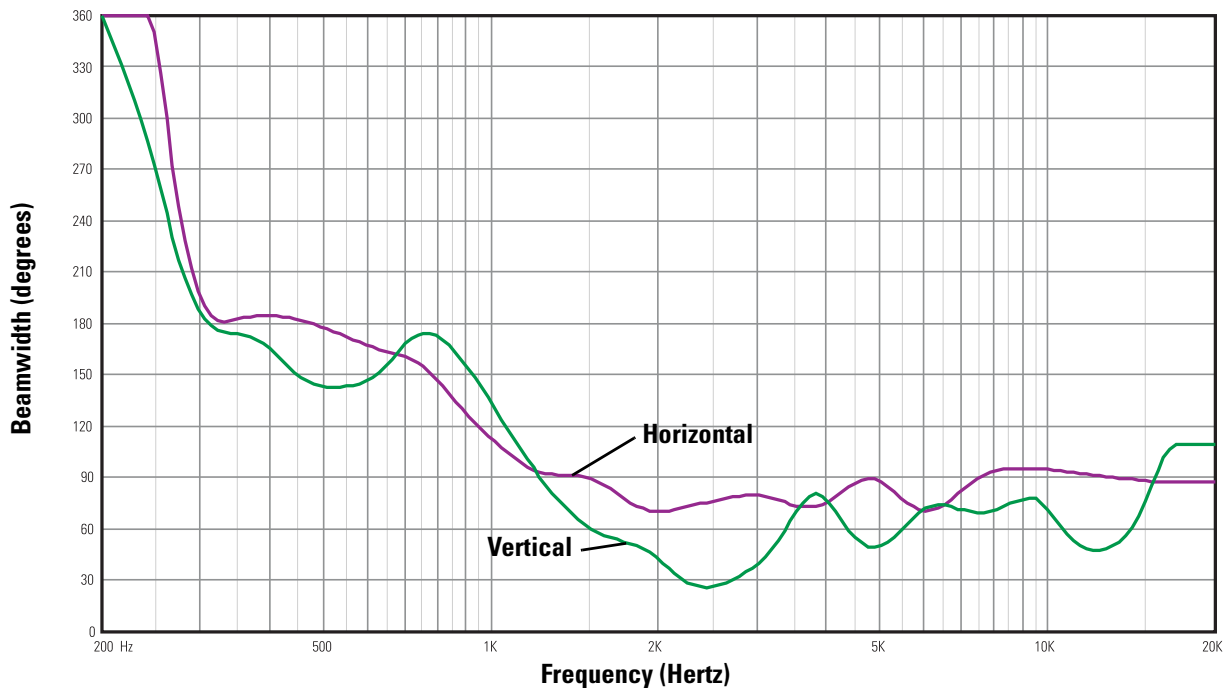
NOTES:

- 1- All frequency ranges specified refer to measured free-field response (4 pi).
- 2- Calculated maximum peak SPL at 1 m, free-field, speaker operating at rated rms power pink noise input, 50 Hz to 20 kHz.
- 3- Maximum input power tested in accordance with IEC recommendations; 50 Hz to 20 kHz band limiting, 6 dB signal crest factor.

Specifications are subject to change without notice.

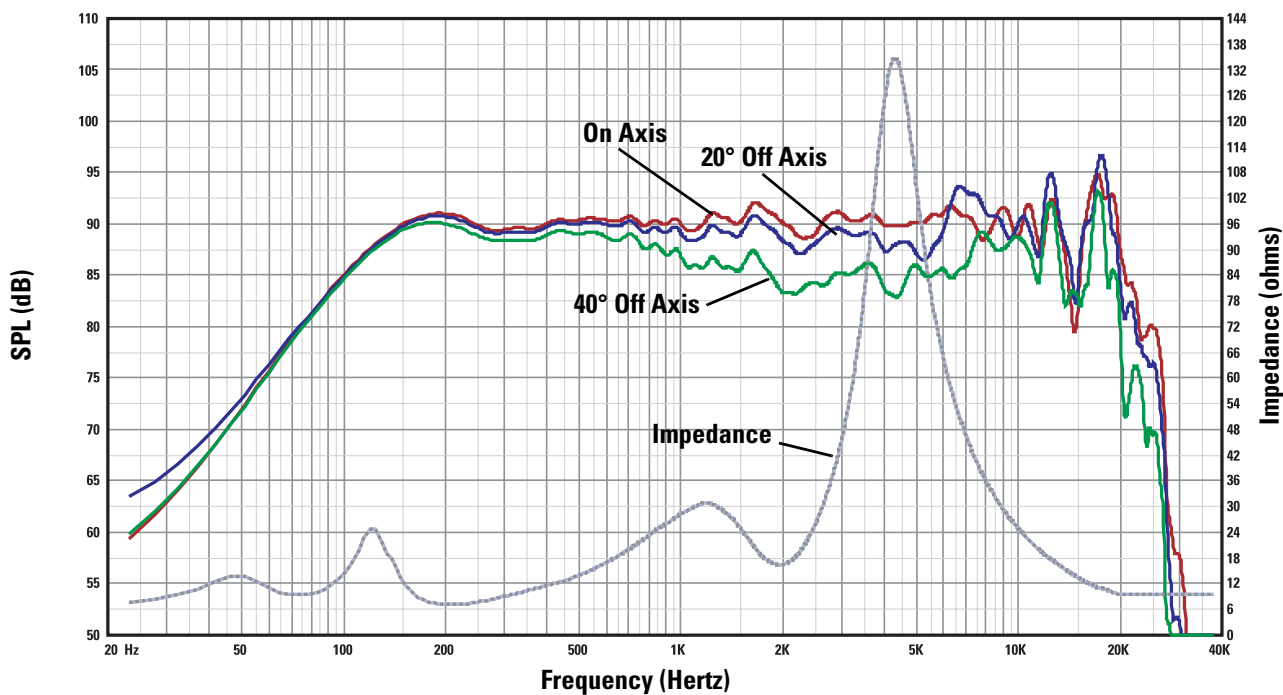
I-82H Beamwidth, Response, and Impedance Curves

I-82H Horizontal and Vertical Beamwidth Vs. Frequency



EN

I-82H Response On-Axis, 20° Off-Axis, 40° Off-Axis, and Impedance Vs. Frequency



Specifications are subject to change without notice.

Painting the I-82H Loudspeaker

The loudspeaker enclosure, grill, and mount can be painted to match any decor, provided the following precautions are observed. The cabinet is made of high impact polystyrene which requires controlled painting procedures in order to obtain good results. Use a paint "system" designed for high impact polystyrene from any reputable paint supplier.

- 1- Remove the grill.
- 2- If painting mount and loudspeaker as a unit: Attach the I-YM8.
- 3- Mask the loudspeaker's input connector.
- 4- Mask the woofer, tweeter, and port being certain not to apply tape directly to the drivers. Alternatively, the inside of the grill can be completely masked and set in place on the loudspeaker enclosure for painting.
- 5- Wash the components to be painted with a mild soap and hot water. Be careful not to get water on or into either of the drivers or the input connections. Rinse with hot water. Allow to dry thoroughly.
- 6- Scuff-sand the components to be painted using red Scotchbrite® pad or 320 - 400 grit sandpaper.
- 7- Using compressed air, remove all dust from the components to be painted. Do not blow compressed air directly into either driver.
- 8- Clean the components to be painted.
- 9- Using a clean, lint-free, white cloth, wipe the components to be painted with suitable prep solution.
- 10- Apply adhesion promoter.
- 11- Apply primer topcoat.
- 12- Apply paint.
- 13- Allow to dry for at least 8 hours before handling.

How to Contact QSC Audio Products

Cómo comunicarse con QSC Audio Products

Comment prendre contact avec QSC Audio Products

Kontaktinformationen für QSC Audio Products

联系 QSC Audio Products



Mailing address: QSC Audio Products, Inc.
1675 MacArthur Boulevard
Costa Mesa, CA 92626-1468 USA



Telephone Numbers:

Main Number (714) 754-6175
Sales & Marketing (714) 957-7100 or toll free (USA only) (800) 854-4079
Customer Service (714) 957-7150 or toll free (USA only) (800) 772-2834



Facsimile Numbers:

Sales & Marketing FAX (714) 754-6174
Customer Service FAX (714) 754-6173



World Wide Web: www.qscaudio.com

E-mail: info@qscaudio.com
service@qscaudio.com

QSC™

QSC Audio Products, Inc. 1675 MacArthur Boulevard Costa Mesa, California 92626 USA

©2003 "QSC" and the QSC logo are registered with the U.S. Patent and Trademark Office.