

# UR 22 mkII

USB



EN

 **steinberg**

.....	2
.....	3
.....	3
.....	5
.....	7
<b>UR22mkII</b> .....	10
.....	10
.....	12
/ .....	12
UR22mkII .....	15
MIDI .....	16
.....	19
- .....	19

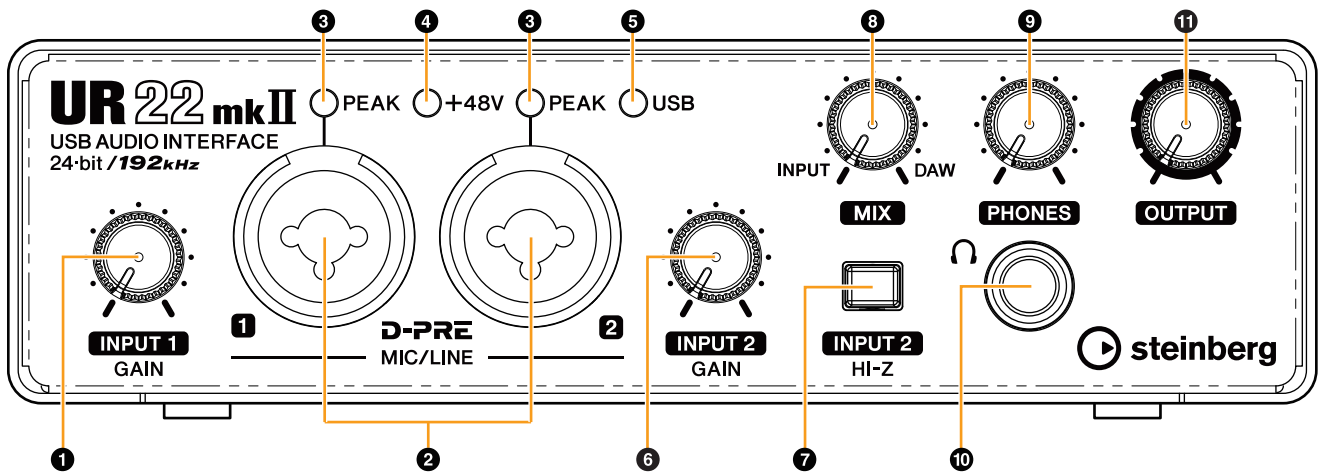
USB  
 Steinberg UR22mkII  
 200 MR816CSX  
 MR816X Steinberg  
 , 2011 UR824  
 UR28M, 2013 — UR22, 2014 UR44 UR12,  
 2015 UR242.  
 UR22mkII —  
 UR22,  
 mkII , UR22mkII  
 UR22.  
 iOS  
 (loopback).  
 iOS,  
 UR22  
 UR  
 : Windows,  
 Mac iOS.  
 USB

loopback. UR22mkII

UR22mkII

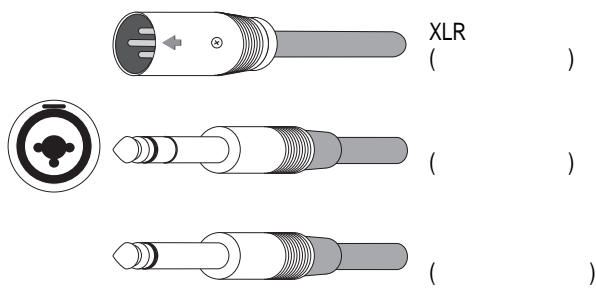
D-Pre

UR22mkII



- 1 [INPUT 1 GAIN] [MIC/LINE 1]. iPad
- 2 [MIC/LINE 1/2] XLR, ( / ) \*1.
- 3 [PEAK]
- 4 [+48V] [PEAK]
- 5 USB
- 6 [INPUT 2 GAIN] [MIC/LINE 2].
- 7 [INPUT 2 HI-Z] ( / ).
- 8 INPUT DAW
- 9 PHONES
- 10 INPUT 2 HI-Z
- 11 OUTPUT

\*1

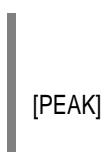


[MIC/LINE 2].  
[MIC/LINE 2]



[INPUT 2 HI-Z]

- 3 [PEAK]
- 4 [+48V]



[INPUT 2 HI-Z]

- 4 [+48V]
- [+48V].

8

[MIX]

[MIC/LINE 1/2],  
(DAW).

[MIC/LINE 1/2]

Mix

[MIX]

[DAW],

[INPUT]

[DAW],

9

[PHONES]

[PHONES].

[OUTPUT].

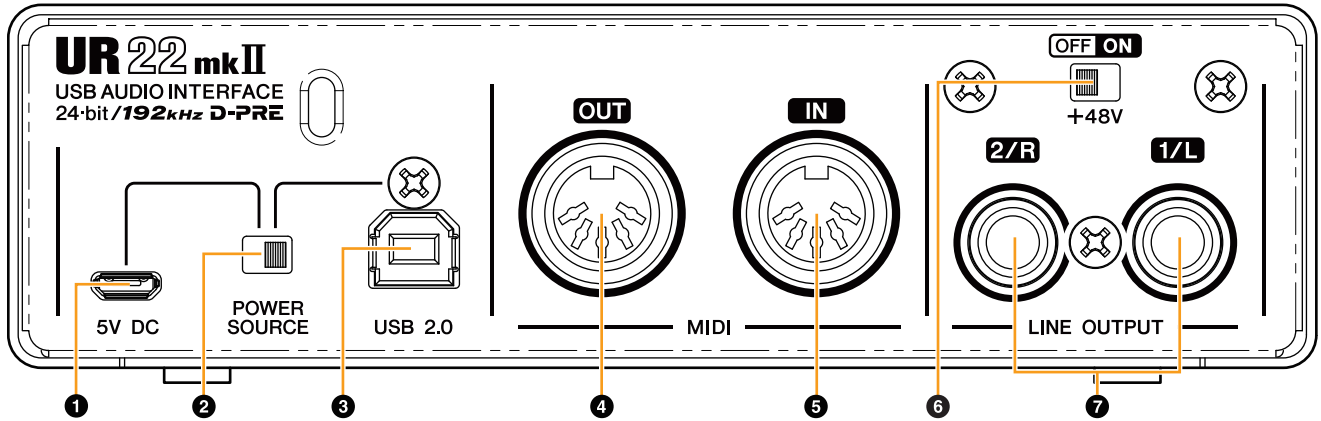
10

[PHONES]

11

[OUTPUT]

[LINE OUTPUT].



- 1 [5V DC] USB
- 2 [POWER SOURCE] iPad
- 3 [USB2.0] iPad
- 4 [MIDI OUT] MIDI
- 5 [MIDI IN] MIDI
- 6 LINE OUTPUT 2/R
- 7 LINE OUTPUT 1/L

6

[+48V]

[MIC/LINE 1/2], XLR,

- 
- 
- 

[MIC/LINE 1/2],

7

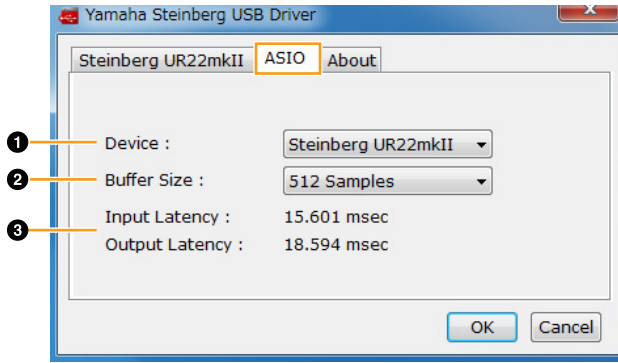
[LINE OUTPUT 2/R 1/L]

.) jack phono (



## ASIO

### ASIO



#### 1 Device

ASIO (Yamaha Steinberg USB Driver).

#### 2 Buffer Size

ASIO

44.1 /48	64	- 2048
88,2 /96	128	- 4096
176,4 /192	256	- 8192

#### 3 Input Latency/output Latency

### About

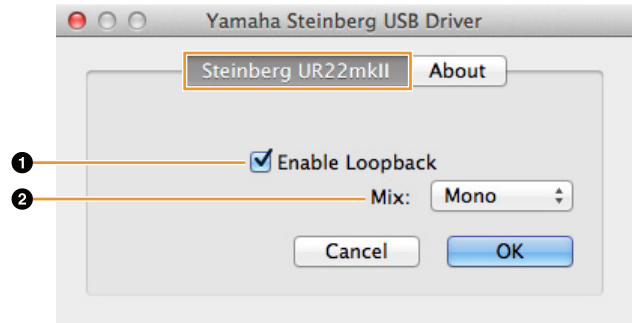


## Mac

- [System Preferences] [Yamaha Steinberg USB].
- Cubase [Devices] [Device Setup...] [Steinberg UR22mkI] [Control Panel] [Open Config App]

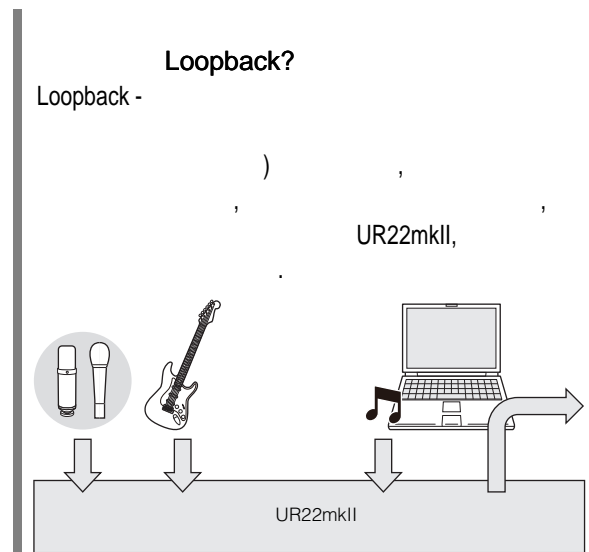
### Steinberg UR22mkII

loopback.



#### 1 Enable Loopback

loopback.



loopback (DAW). UR22mkII



### 3 Mix

Enable Loopback,

: Mono, Stereo  
 Mono: [MIC/LINE 1/2]

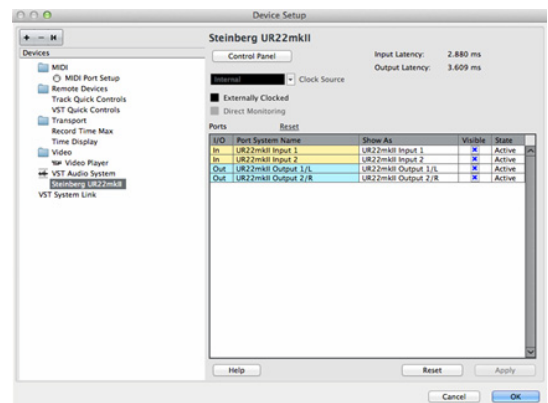
Stereo: [MIC/LINE 1/2]  
 [MIC/LINE 1]  
 [MIC/LINE 2]

About



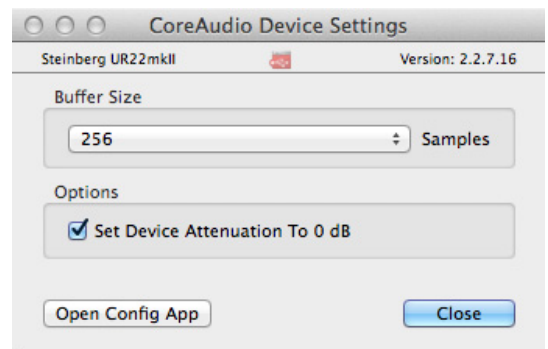
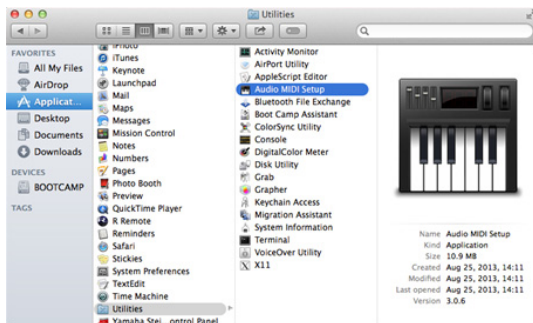
1. Cubase [Devices]  
 [Device Setup...]

2. [Steinberg UR22mkII] [Control Panel]

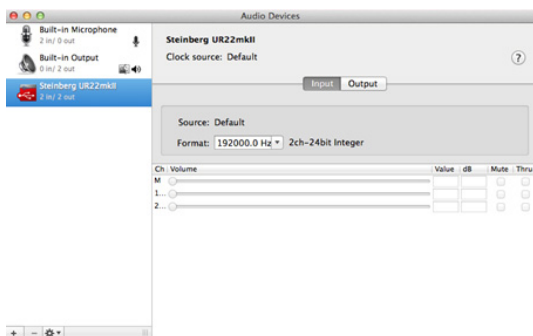


[Audio MIDI Setup].

1. [Applications] - [Utilities] - [Audio MIDI Setup].



2. [Format].



# UR22mkII

UR22mkII.

1.

[OUTPUT]

[PHONES]



2.

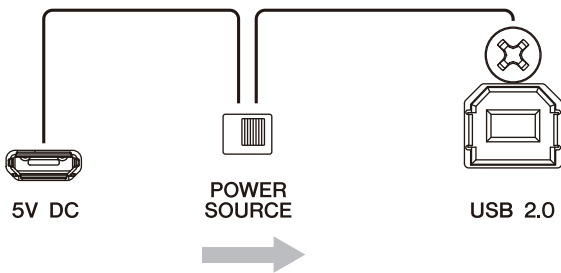
[+48V] [INPUT 2 HI-Z]  
" (off).



[INPUT 2 HI-Z] [+48V]

3.

[POWER SOURCE],  
[USB2.0].



4.

USB

- (Windows) Yamaha Steinberg USB Driver. USB
- (Mac OS) Yamaha Steinberg USB Driver. USB

5.

[MIC/LINE 1].

6.

[MIC/LINE 2].

7.

[INPUT 2 HI-Z]

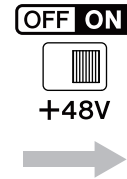
" (on)



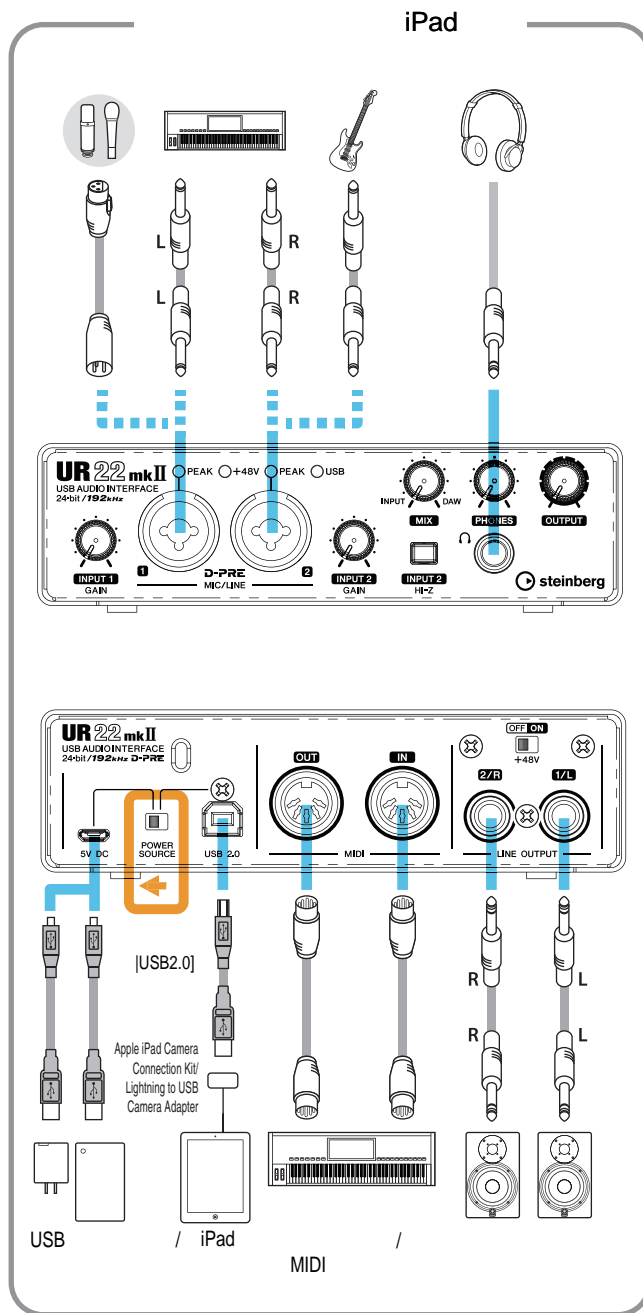
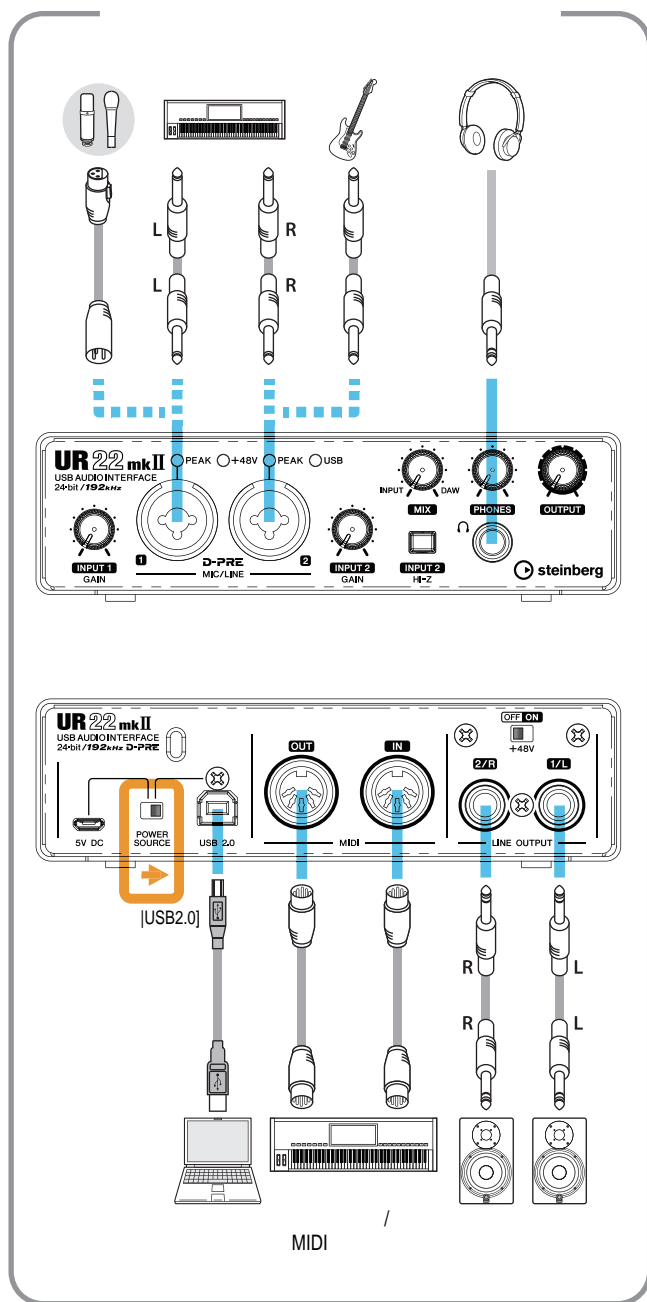
**INPUT 2**  
HI-Z

8.

[+48V].



iPad,



- UR22mkII iPad Apple iPad Camera Connection Kit
- UR22mkII iPad Lightning - USB Camera Adapter
- UR22mkII iPad loopback
- iOS Steinberg.

<http://www.steinberg.net/>

UR22mkII

Yamaha

Cubase ( )

Steinberg USB Driver

### Cubase

1.

Cubase

1.

Cubase.

2.

Cubase.

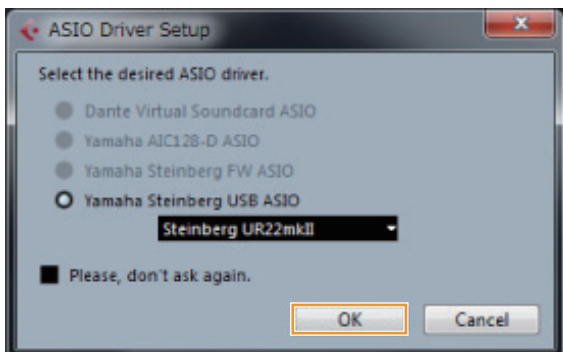
2.

( ), [Create] ( [Recording] ).  
[Clean  
E-Guitar + Vocal] ( ).

3.

Cubase  
[ASIO Driver Setup],

UR22mkII, [OK].



1.

[Missing Ports] ( UR22mkII ),

2.

DAW.

[Mapped ports].

3.

3.

[Devices] - [VST Connections]  
[VST Connections].  
Cubase

4.

ASIO (

Windows).

UR22mkII.

5.

ASIO

Windows

Mac.

Windows

ASIO  
[Yamaha Steinberg USB ASIO].

Mac

UR22mkII

4. UR22mkII [Device Port]  
Inputs ( ) Outputs ( ).

Inputs

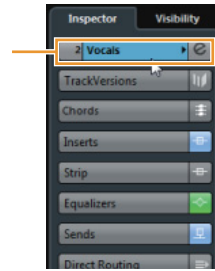
Bus Name	Speakers	Audio Device	Device Port
Stereo In 1	Stereo	Not Connected	Not Connected
Left			Not Connected
Right			Not Connected
Mono In 1	Mono	Yamaha Steinberg USB ASIO	UR22mkII Input 1
Mono			
Mono In 2	Mono	Yamaha Steinberg USB ASIO	UR22mkII Input 2
Mono			

Outputs

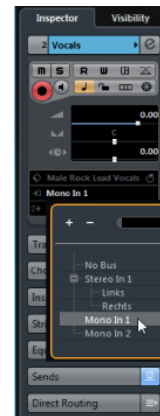
Bus Name	Speakers	Audio Device	Device Port
Stereo Out	Stereo	Yamaha Steinberg USB ASIO	UR22mkII Output 1/L UR22mkII Output 2/R
Left			
Right			

9.

[MIC/LINE 1]:



[Mono-In 1].



[MIC/LINE 2]:

5. [MIX]  
[INPUT] [DAW].

6. [INPUT GAIN]

[INPUT 1 GAIN].  
[MIC/LINE 2],  
[INPUT 2 GAIN].

[PEAK]

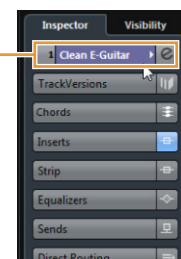
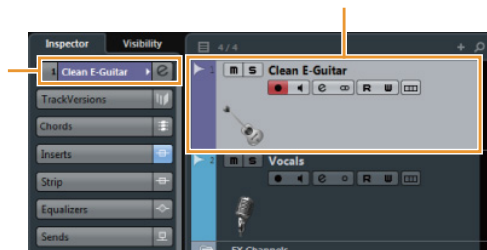
7. [PHONES].

8. [Clean  
E-Guitar] [Vocals]. [Clean

E-Guitar]

[Vocals].

[Clean



[Mono-In 2].



10. [●]



11. [■]



12. Ruler



13. [▶]



[HELP]

[OUTPUT].

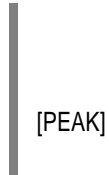
Cubase,

1.

DAW.

2.

[INPUT GAIN]



3.

[MIX]

[INPUT]

[DAW].

4.

[PHONES].

5.

6.

7.

# UR22mkII MIDI

4.

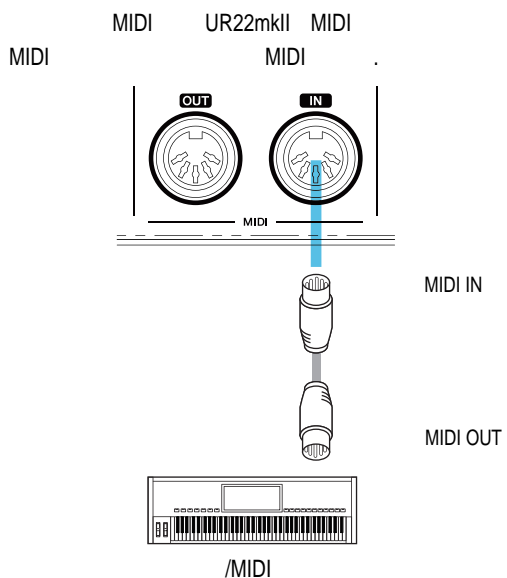
Cubase,

MIDI  
HALion Sonic SE.

VST

1.

UR22mkII.

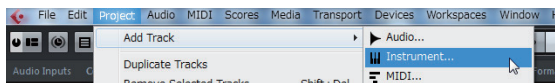


[All MIDI Inputs]

[Steinberg UR22mkII I-1].

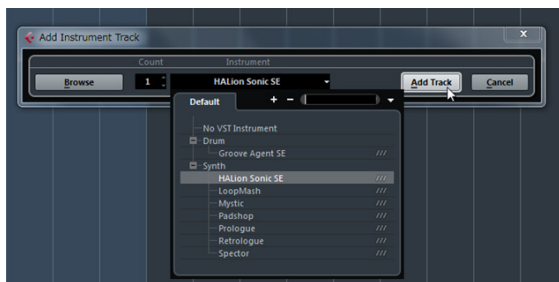
2.

[Project] → [Add Track] → [Instrument...]

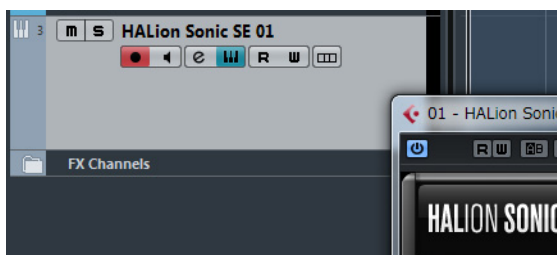


3.

HALion Sonic SE [Add Track].



[Project] - [Add Track] - [Instrument . . .]



( USB UR22mkII )	USB Yamaha Steinberg USB Driver ? USB .
	1. USB USB .
	2. (Windows) Audio MIDI Setup (Mac) <b>Windows</b> [ ]-> [ ] . [+] [>] " , ". <b>Mac</b> [Applications] -> [Utilities] -> [Audio MIDI Setup].
3. USB USB . USB 3 .	
USB , USB . USB 3 .	
<b>[POWER SOURCE]</b> ? [USB2.0], USB, [5V DC],	
USB Yamaha Steinberg USB Driver ? USB .	
USB , USB . USB 3 .	
? [OUTPUT] [PHONES].	
" ( 11), ?	
" ( 12), ?	

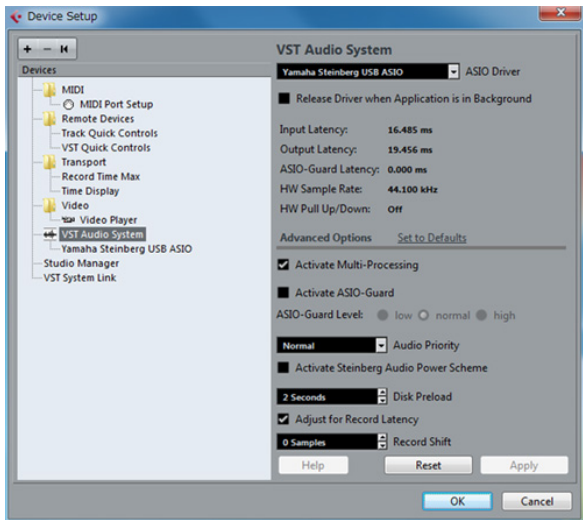


**ASIO**

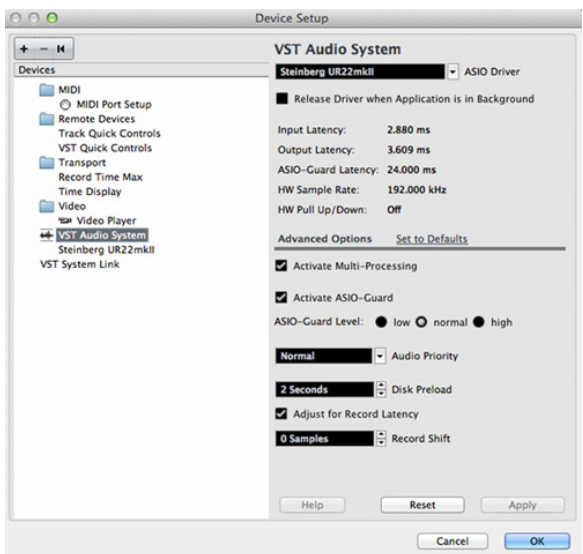
**Cubase?**

Cubase [ASIO Driver] [Steinberg UR22mkII] ( Mac).  
 [Devices] -> [Device Setup...] -> [VST Audio System], [Yamaha Steinberg USB ASIO] ( Windows)

**Windows**



**Mac**



(DAW),

?

" ( .13) DAW.

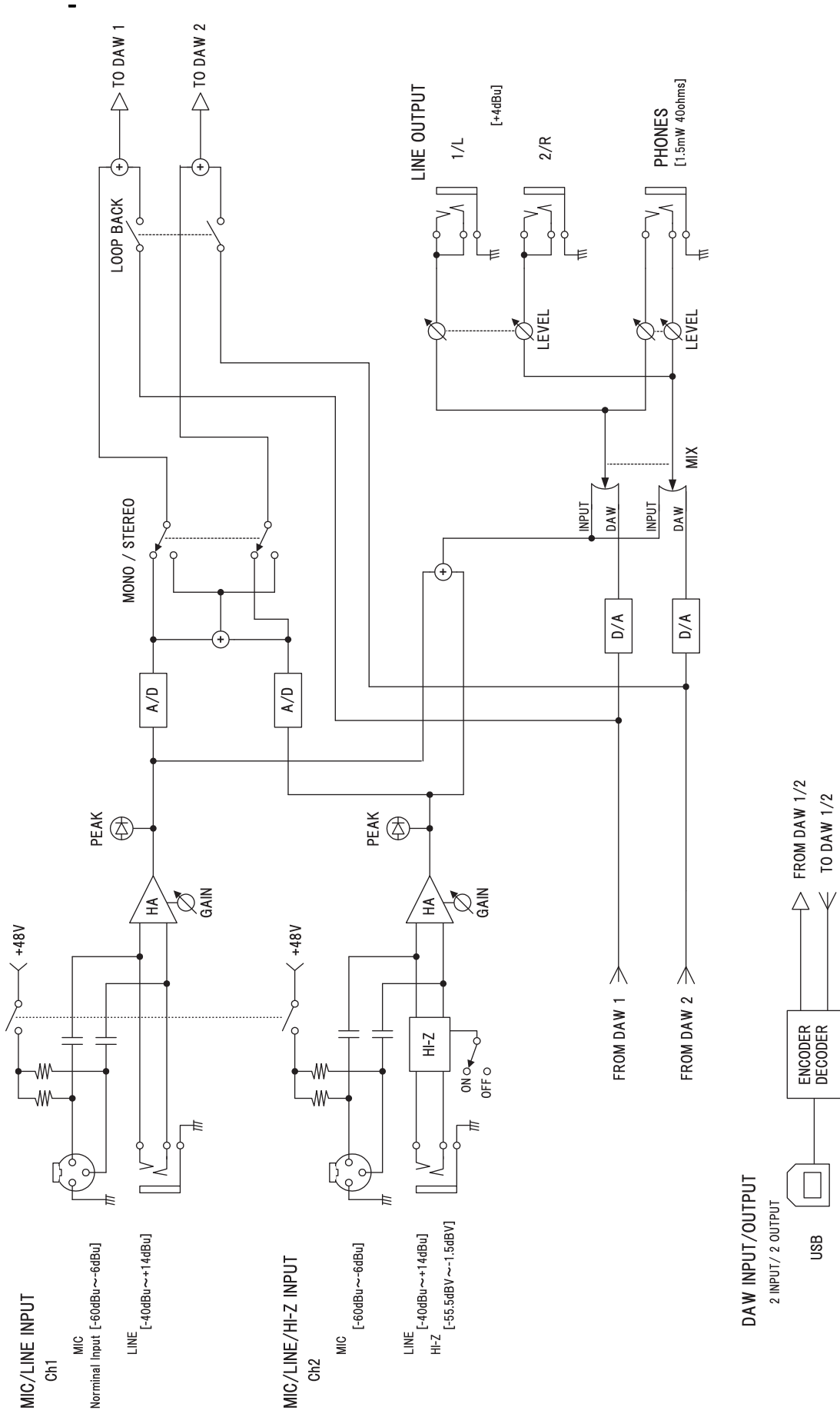
?

?

?

"Yamaha Steinberg USB Driver (Windows)" ( .8) (Mac)" ( .9).

( , )	Steinberg. <a href="http://www.steinberg.net/">http://www.steinberg.net/</a>
	?
	XLR ?
	[MIX] [MIX] [DAW], ?
	loopback ? “ Steinberg UR22mkII (Windows)” ( . 7) “ Steinberg UR22mkII(Mac)” ( . 8).



© 2015 Yamaha Corporation

Published 9/2015 MW-A0

