



CURRENTAUDIO®
ADVANCING THE STATE OF **SOUND**

PRODUCT GUIDE



“We are integrators building
products for integrators.”
– Sean McDermott, CEO

Great people, superior design and excellence in manufacturing plays a critical role in creating all Current Audio products.

Current Audio is backed by an award winning and inspiring team of seasoned designers, engineers, and installation experts. As a CE Pro Top 100 Integrator, we offer years of patented, custom audio product development and manufacturing experience.

As integrators with decades of sales and installation know-how in the speaker business, we understand the installers’ wants, needs, and struggles because we are installers ourselves.

Current Audio delivers proven and innovative products that excel in quality and performance and saves you time and money. We carefully listen to and respond to our customers’ suggestions and needs. The result of our listening has produced a superior company and product line.

Current Audio holds fifteen international pending patents, which is a true testament of our determination to bring a fresh set of innovative ideas to what has become known as a stagnant part of the industry.

Take part in this exciting, revolutionary time in the audio industry. Impress your clients with the crisp and clear sound that is Current Audio. Call us today and Believe Your Ears!™



TABLE OF CONTENTS

CONTROL AND AUTOMATION 4

AX-1250DAV	4-5
AX-400DA	6-7
AX-MINI4	8-9
AX-KPC	10
AX-KPD	10
AX-R4D	11
AX-R1D	11

MULTI-ZONE AMPLIFIERS 12

AMP1270	12-13
AMP870	12-13
AMP2150	12-13

PLATINUM SERIES 14

FIT804FL	15
FIT654FL	15
WSLCR654FL	15
CS804FL	15
CS654FL	15
CS654DBFL	15

PREMIER SERIES 16

FIT801FL	17
FIT651FL	17
CS801/FL	17
CS651FL	17
CS501/FL	17
CS301/FL	17
WS801FL	17
WS651FL	17

SIGNATURE SERIES 18

FIT800FL	19
FIT650/FL	19
WSLCR650FL	19
CS650FL	19
CS650DBFL	19
WS650/FL	19

SOUNDBARS 20

SB800	20-21
-------	-------

FASTLOC APPLICATION 22

FIT APPLICATION 24

LCR THEATER APPLICATION 26

DIPOLE/BIPOLE APPLICATION 28

DUAL TWEETER SERIES 30

CS800DTFL	31
CS650DTFL	31
BCS65DTFL	31

CONTRACTOR SERIES 32

BCS80FL	33
BCS65FL	33
BCS65	33
BCS65DTFL	33

PRO SERIES 34

SPA525FR	35
SUB801-70V	35
OC65B-70V	35
OC525B-70V	35
OC525W-70V	35

SUBWOOFER SERIES 36

FLSUB-10	37
FLSUB-8B	37
FLSUB-8W	37

OUTDOOR SERIES 38

OC8B	39
OC8W	39
OC65W	39
OC65B	39
OC525W	39
OC525B	39
OR6G	39
OR6S	39

ACCESSORIES 40

NC8CB	40
NC6CB	40
NC8WB	40
NC6WB	40
NC6LCRWBi	40
NC8FITCBi	40
NC5CB	40
TB8	40
TBFIT8	40
TB6	40

CS65BC	41
CS80BC	41
CS65BB	41
WWPW	42
WWPB	42
ZL75WIA	42
R70VT	43
4PS	43
SPEKAP	44

CONTROL AND AUTOMATION

AX-1250DAV



There are 6 powered zones delivering 55 Watts per channel and 2 independent preamp zones, all have access to 8 combined digital/analog and 4 dedicated digital coax/optical inputs plus a network audio decoder that can stream from the local network, the Internet or a mobile device (phone or tablet) connected to the network.

AX-1250DAV

- | | |
|--|---|
| • 55 Watts per channel 8 ohms - 4 ohms capable for 3 zones | • 12 Audio sources |
| • Pandora and TuneIn Internet streaming | • S13 – Ethernet/Internet stream |
| • Local mobile device music playback (iOS and Android) and UPnP push functionality | • Up to 10 seconds of 44.1kHz 16-bit stereo audio for the doorbells |
| • Fully implemented UPNP server | • 10 Buffered IR outputs |
| • Network share (NAS or PC) playback | • Internal real time clock |
| • Output short circuit, thermal and hard clipping protection | • Internal web page with user access control and setup |
| • 18dB Analog input gain adjustment | • iOS and Android compatible via FREE app |
| • Auto zone On/Off via source audio sensing | • Zone and source event triggers |
| • 600ms of audio delay per zone, per source | • Backward compatible, adding ethernet connectivity and control to legacy systems |
| • Expandable to 96 zones (via network expansion) | • Extensive zone linking |
| • Bass, treble, balance and loudness per zone | • Keypad/IR connection for every zone |
| • Sub-Woofer pre amplification filter setting | • 14 amplifier presets and 2 page presets |
| • Alarm capabilities built in | • Control4 driver available – FREE |
| • AMP-ON status for each zone: 12VDC outputs | • Power consumption: 650 WRMS |
| • Setup lockout | • StandBy power: 6 Watts |
| • Static or DHCP network connections | |

CONTROL AND AUTOMATION

AX-400DA



There are 4 powered zones delivering 50 Watts per channel. With 6 sources and the added functionality of being able to be stacked with the AX-800DAV expansion is now even more affordable.

AX-400DA

- | | |
|--|--|
| • 50 Watts per channel 8 ohms - 4 ohms capable | • Backward compatible |
| • Output short cct, thermal and hard clipping protection | • Extensive zone linking |
| • Analog input level gain adjustment | • Keypad/IR connection for every zone |
| • Up to 120ms of adjustable audio delay per zone | • USB, RS232 and ethernet interface |
| • Up to 96 zones | • 14 Amplifier presets, 2 page presets |
| • Bass, treble, balance loudness adjustments per zone | • Amp-on status: 12VDC outputs |
| • 7 Sources | • Setup lockout |
| • Storage for up to 10 seconds of 44.1kHz 16-bit stereo | • Static/dhcp network connections |
| • 8 Buffered IR outputs. 1-6 have routing, 7-8 summed | • Power supply 90 – 240VAC 50/60Hz |
| • Internal real time clock | • Power consumption 320 WRMS |
| • Internal web page | • StandBy power 6 Watts |

CONTROL AND AUTOMATION

AX-MINI4



4 powered zones expandable to 40 rooms, delivering 15 Watts per speaker from 2 internal streaming sources or 2 external analog sources. Distributed audio like you have not heard before.

AX-MINI4

- | | |
|---|---|
| • Built in streaming audio including TuneIn and Pandora | • 2 keypad ports for local keypad control |
| • 4 Sources (2 streaming, 2 analog) | • Internal webpage with configuration |
| • 15 Watts per channel @8Ω (4Ω capable) | • iOS and Android compatible via FREE app |
| • Fully implemented UPNP server functionality | • Guest mode |
| • Output short circuit, thermal and hard clipping protection | • Backward compatible, adding ethernet connectivity and control to legacy systems |
| • Analog line in connection for local source playback | • Ethernet interface |
| • Remote balanced line in for playing a source with included remote ballun insert | • Static and DHCP network connections |
| • Expandable to 32 zones | • Power Supply: 100 – 240VAC 50/60 HZ |
| • Bass, treble, balance and loudness adjustments per zone | |

CONTROL AND AUTOMATION

AX-KPC2.8



AX-KPD



AX-KPC2.8

- 2.8" LCD touch panel
- Operating voltage: 12VDC \pm 3v
- Current draw typically 60ma – 100ma
- Memory: 8MB flash for GUI and IR commands
- IR learning of both modulated and pulse IR codes
- Large IR database supplied
- Portrait or landscape display orientations
- Full featured conditional flow macro functions
- Range of skins available for graphical user interface (GUI)
- Support for transparent and multilayer images
- Background images using PNG, BMP, JPG or GIF formats
- Anti-aliased text with user defined font, color and unicode support
- Polygon button outlines provide very close button spacing
- User defined button sounds: wav file
- Wiring: up to 300m cat5e 'home run' RJ45 terminated cable with option to daisy chain to another keypad

AX-KPD

- 1.5" Color TFT LCD
- Operating voltage: 12VDC \pm 3v
- Current draw typically 100 MA, maximum = 140 MA
- Memory: 8MB flash for GUI and IR commands
- IR learning of both modulated and pulse IR codes
- Large IR database supplied
- Wiring: up to 300m of cat5e 'home run' cable
- Connection: RJ45 plug.
- Anti-aliased text with user defined font, color and unicode support
- Full featured conditional flow macro functions

AX-R4D



AX-R1D



The AX-R4D and AX-R1D facilitates 2-way communication between the KPC2.8, KPD, Mobile Android and iOS devices and a wide range of 3rd party products bringing metadata back from these devices to the end user.

AX-R4D

- 4 x Dedicated RS232 DB9 ports, max throughput = 115 kBd
- 1 x Axiom keypad RJ45 ports, balanced RS485 and std IR
- 4 x IR emitter output / sensor inputs : 3.5mm jacks
- 4 x IR emitter outputs: 3.5mm jacks
- Port activity LED indication on each IR port and the RS232 com port

AX-R1D

- 1 x Dedicated RS232 DB9 ports, max throughput = 115 kBd
- 1 x Axiom Keypad RJ45 ports, balanced RS485 and std IR
- 2 x IR emitter output / sensor inputs : 3.5mm jacks
- 2 x IR emitter outputs: 3.5mm jacks
- Port activity LED indication on each IR port and the RS232 comms port

MULTI-CHANNEL AMPLIFIERS

Improve the quality of your whole house audio system with powerful 12, 8 and 2 channel amplifiers feature global and individual inputs that can be selected per zone, phoenix connectors which ensure reliable speaker connection and independent gain control for each channel.



AMP1270

Multi-Channel Amplifiers

AMP1270

6 Zone,
12 Channel Amplifier
w/auto-sensing and dual global inputs



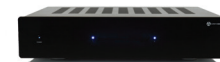
AMP870

4 Zone,
8 Channel Amplifier
w/auto-sensing and dual global inputs



AMP2150

1 Zone,
2 Channel Amplifier
w/auto-sensing



CONTINUOUS POWER OUTPUT BOTH CHANNELS DRIVEN	70 Watts RMS at 4 ohms 50 Watts RMS at 8 ohms	70 Watts RMS at 4 ohms 50 Watts RMS at 8 ohms	150 Watts RMS at 4 ohms 100 Watts RMS at 8 ohms
BRIDGED POWER OUTPUT BOTH CHANNELS DRIVEN	140 Watts per channel RMS at 8 ohms Caution: maintain an 8 ohm load in the bridged mode	140 Watts per channel RMS at 8 ohms Caution: maintain an 8 ohm load in the bridged mode	300 Watts per channel RMS at 8 ohms Caution: maintain an 8 ohm load in the bridged mode
INPUT SENSITIVITY	500 Millivolts	500 Millivolts	500 Millivolts
INPUT IMPEDANCE	20,000 Ohms	20,000 Ohms	20,000 Ohms
SIGNAL TO NOISE RATIO	95 dB	95 dB	95 dB
FREQUENCY RESPONSE	20Hz to 20kHz	20Hz to 20kHz	20Hz to 20kHz
TOTAL HARMONIC DISTORTION (UNBRIDGED OR BRIDGED)	0.1% THD 20Hz to 20kHz	0.1% THD 20Hz to 20kHz	0.2% THD 20Hz to 20kHz
INPUTS	Main, AUX and local zone (switch selectable)	Main, AUX and local zone (switch selectable)	Local zone
TRIGGERS	12 Volt and audio auto-sensing (switch selectable)	12 Volt and audio auto-sensing (switch selectable)	12 Volt and audio auto-sensing (switch selectable)
LENGTH x WIDTH x DEPTH	17" (431.8mm) x 4" (101.6mm) x 13" (330.2mm)	17" (431.8mm) x 4" (101.6mm) x 13" (330.2mm)	17" (431.8mm) x 4" (101.6mm) x 13" (330.2mm)
WEIGHT	32 lbs (14.6kgs)	25 lbs (11.4kgs)	18 lbs (8.2kgs)

PLATINUM Series

For those who only want the best in life. Current Audio has developed our Platinum Series. Deeper bass and the clearest highs.

Driver Material: Woven Carbon Fiber

•Woven carbon fibre is used in aerospace and Formula 1 race cars. Five years of research through trial and error has resulted in a superior state of the art material.

•Woven carbon fiber has a very low moving mass. The lowest moving mass of any cone material. It also has the highest stiffness of any of the materials available. The ideal driver cone has no moving mass and is stiff to allow a perfectly linear, pistonic movement of the driver cone / voice coil assembly.

•The midrange articulation is amazing with this material. One of toughest challenges in midrange performance is reproduction of a female vocal. You listen to this driver versus other materials and manufacturers you can really hear the difference. The woven carbon fiber allows for extremely detailed vocals. There are no "muddy" overtones.

•The other outstanding characteristic is transient response. The speed at which a driver cone can move forward and backwards in a linear fashion. Low moving mass allows for the driver cone to react quickly while the stiffness of the cone allows for a linear motion that won't allow for distortion in the low frequency range. This gets rid of the boomy bass or muddy bass associated with inferior designs. Many manufacturers try to get more bass by using loose and floppy mechanical suspension instead of using high stiffness low mass assemblies.

Tweeter Material: Ceramic Coated Aluminum Dome Tweeter

•We take our standard series aluminum dome tweeter material and add a atomized layer of ceramic to the dome at a molecular level. It is not "painted" or "dipped" in ceramic. If it were, the coating would be too thick, too heavy and inconsistent.

•Our ceramic coating imparts a stiffness on the center of the dome to prevent high frequency distortion caused by dome deformation at high power levels in high frequencies.

•We make adjustments in the voice coil materials to offset the small additional mass that the ceramic coating adds. This allows for the efficiency of the tweeter to be maintained and the high frequencies to be extended.



FIT654FL

Platinum Series Speakers

FIT804FL

8" 2-way, in-ceiling, coaxial,
infinite baffle loudspeaker
w/ FastLoc™ grille



DRIVER	8" Woven carbon fiber cone w/ butyl rubber surround
TWEETER	Diffractionless, 1" (25mm) pivoting, ceramic coated aluminum dome tweeter, ferrofluid cooled
FREQ RESP	33Hz - 21kHz
IMPEDANCE	8, 6 or 4 Ohms dependant on driver setting
POWER	5-150 Watts
SPL	91.5 dB 1w/1m
PRODUCT DIMENSION	11 1/2" (292mm) x 7 1/8" (182mm)
RETROFIT CUTOUT	10 1/2" (265mm)
FASTLOC™ GRILLE DIMENSION	11 13/16" (300mm)
BRACKET TYPE	NC8FITCbi

CS804FL

8" 2-way, in-ceiling, coaxial,
infinite baffle loudspeaker
w/ FastLoc™ grille



DRIVER	8" Woven carbon fiber cone w/ butyl rubber surround
TWEETER	Diffractionless, 1" (25mm) pivoting, ceramic coated aluminum dome tweeter, ferrofluid cooled
FREQ RESP	33Hz - 21kHz
IMPEDANCE	8, 6 or 4 Ohms dependant on driver setting
POWER	5 - 150 Watts
SPL	91.5 dB 1w/1m
PRODUCT DIMENSION	11 1/2" (292mm) x 4 3/8" (111mm)
RETROFIT CUTOUT	9 3/4" (247mm)
FASTLOC™ GRILLE DIMENSION	11 13/16" (300mm)
BRACKET TYPE	NC8CB

FIT654FL

6.5" 2-way, in-ceiling, coaxial,
infinite baffle loudspeaker
w/ FastLoc™ grille



DRIVER	6.5" Woven carbon fiber cone w/ butyl rubber surround
TWEETER	Diffractionless, 1" (25mm) pivoting, ceramic coated aluminum dome tweeter, ferrofluid cooled
FREQ RESP	35Hz - 21kHz
IMPEDANCE	8, 6 or 4 Ohms dependant on driver setting
POWER	5 - 150 Watts
SPL	91.5 dB 1w/1m
PRODUCT DIMENSION	9 3/8" (237mm) x 5 5/8" (144mm)
RETROFIT CUTOUT	8 1/4" (210mm)
FASTLOC™ GRILLE DIMENSION	9 3/4" (247mm)
BRACKET TYPE	NC6CB

CS654FL

6.5" 2-way, in-ceiling, coaxial,
infinite baffle loudspeaker
w/ FastLoc™ grille



DRIVER	6.5" Woven carbon fiber cone w/ butyl rubber surround
TWEETER	Diffractionless, 1" (25mm) pivoting, ceramic coated aluminum dome tweeter, ferrofluid cooled
FREQ RESP	35Hz - 21kHz
IMPEDANCE	8, 6 or 4 Ohms dependant on driver setting
POWER	5 - 150 Watts
SPL	91.5 dB 1w/1m
PRODUCT DIMENSION	9 3/8" (237mm) x 3 7/8" (98mm)
RETROFIT CUTOUT	8 1/4" (210mm)
FASTLOC™ GRILLE DIMENSION	9 3/4" (247mm)
BRACKET TYPE	NC6CB

WSLCR654FL

low profile, in-wall, coaxial,
infinite baffle loudspeaker,
w/ FastLoc™ grille



DRIVER	Two 6.5" Woven carbon fiber w/butyl rubber surround
TWEETER	Diffractionless, 1" (25mm) pivoting, ceramic coated aluminum dome tweeter, ferrofluid cooled
FREQ RESP	35Hz - 21kHz
IMPEDANCE	8 Ohms three position crossover
POWER	5 - 150 Watts
SPL	91.5 dB 1w/1m
PRODUCT DIMENSION	15 3/4" (401mm) x 8 15/16" (227mm) x 3 7/8" (98.6mm)
RETROFIT CUTOUT	14 1/5" (360.7mm) x 7 3/5" (193mm)
FASTLOC™ GRILLE DIMENSION	17" (432mm) x 9 5/8" (248mm)
BRACKET TYPE	NC6LCRWbi

CS654DBFL

6.5" 2-way, low profile dipole/bipole,
in-ceiling, coaxial, infinite baffle
loudspeaker, w/ FastLoc™ grille



DRIVER	6.5" Woven carbon fiber w/butyl rubber surround
TWEETER	Two 1" (25mm), ceramic coated aluminum dome tweeters, ferrofluid cooled
FREQ RESP	35Hz - 21kHz
IMPEDANCE	8 Ohms adjustable tweeters, selectable dipole or bipole
POWER	5 - 150 Watts
SPL	91.5 dB 1w/1m
PRODUCT DIMENSION	9 3/8" (237mm) x 3 3/4" (95mm)
RETROFIT CUTOUT	8 1/4" (210mm)
FASTLOC™ GRILLE DIMENSION	9 3/4" (247mm)
BRACKET TYPE	NC6CB

PREMIER Series

We took our Signature line and updated it some to bring you better clarity and smoother bass. The Premier Series brings you that step up.

Driver Material: Injection Molded Carbon Fiber

- The cone manufacturing process utilizes a cross linked carbon fiber resin.

- This material is very stiff with low mass. It is a neutral sounding material that has great midrange response and bass response.

- This is a difficult material to work with during the manufacturing process. The cross-linked carbon fiber, if not processed correctly, can produce a driver cone that is not of even density. This results in distorted midrange. Very few manufacturers use this material because of the processing challenges during the molding process. We have several years experience in perfecting the processing and it results in a superior cone material at a cost just above an entry level product with enhanced performance.

Tweeter Material: Aluminum Dome Tweeter

- This is an aerospace grade aluminum alloy with a hard coat anodized finish.

- This dome allows for minimum distortion of the upper dome in the higher frequency ranges.

- The majority of the energy of the tweeter dome comes from the largest diameter of the dome's sphere. The majority of the acoustical energy does not come from the center of the dome as most people think. In fact, the center of the dome's sphere usually breaks up and causes distortion.

WS801FL



CS801FL

FIT651FL

Premier Series Speakers

FIT801FL

8" 2-way, in-ceiling, coaxial, infinite baffle loudspeaker w/ FastLoc™ grille



FIT651FL

6.5" 2-way, in-ceiling, coaxial, infinite baffle loudspeaker w/ FastLoc™ grille



CS801FL/CS801

8" 2-way, in-ceiling, coaxial, infinite baffle loudspeaker w/ FastLoc™ grille



CS651FL

6.5" 2-way, in-ceiling, coaxial, infinite baffle loudspeaker w/ FastLoc™ grille



DRIVER	8" Injection molded carbon fiber cone w/ butyl rubber surround	6.5" Injection molded carbon fiber cone w/ butyl rubber surround	8" Injection molded carbon fiber cone w/ butyl rubber surround	6.5" Injection molded carbon fiber cone w/ butyl rubber surround
TWEETER	Diffractionless, 1" (25mm) pivoting, aluminum dome tweeter, ferrofluid cooled	Diffractionless, 1" (25mm) pivoting, aluminum dome tweeter, ferrofluid cooled	Diffractionless, 1" (25mm) pivoting, aluminum dome tweeter, ferrofluid cooled	Diffractionless, 1" (25mm) pivoting, aluminum dome tweeter, ferrofluid cooled
FREQ RESP	38Hz - 20kHz	40Hz - 20kHz	38Hz - 20kHz	40Hz - 20kHz
IMPEDANCE	8, 6 or 4 Ohms dependant on driver setting	8, 6 or 4 Ohms dependant on driver setting	8, 6 or 4 Ohms dependant on driver setting	8, 6 or 4 Ohms dependant on driver setting
POWER	5 - 150 Watts	5 - 125 Watts	5 - 150 Watts	5 - 125 Watts
SPL	90 dB 1w/1m	90 dB 1w/1m	90 dB 1w/1m	90 dB 1w/1m
PRODUCT DIMENSION	11 1/2" (292mm) x 7 1/8" (182mm)	9 3/8" (237mm) x 5 5/8" (144mm)	11 1/2" (292mm) x 4 3/8" (111mm)	9 3/8" (237mm) x 3 7/8" (98mm)
RETROFIT CUTOUT	10 1/2" (265mm)	8 1/4" (210mm)	9 3/4" (247mm)	8 1/4" (210mm)
FASTLOC™ GRILLE DIMENSION	11 13/16" (300mm)	9 3/4" (247mm)	11 13/16" (300mm)	9 3/4" (247mm)
BRACKET TYPE	NC8FITC8i	NC6CB	NC8CB	NC6CB

CS501/CS501FL

5.25" 2-way, in-ceiling, coaxial, infinite baffle loudspeaker w/ FastLoc™ grille



CS301/CS301FL

3" 2-way, in-ceiling, coaxial, infinite baffle loudspeaker w/ FastLoc™ grille



WS801FL

8" 2-way, in-wall, full range loudspeaker w/ FastLoc™ grille



WS651FL

6.5" 2-way, in-wall, full range loudspeaker w/ FastLoc™ grille



DRIVER	5.25" Injection molded graphite cone w/ butyl rubber surround	3" Injection molded graphite cone w/ butyl rubber surround	8" Injection molded carbon fiber cone w/ butyl rubber surround	6.5" Injection molded carbon fiber cone w/ butyl rubber surround
TWEETER	3/4" (19mm) titanium coated polycarbonate dome, ferrofluid cooled	5/8" (16mm) titanium coated polycarbonate dome, ferrofluid cooled	Diffractionless, 1" (25mm) pivoting, aluminum dome tweeter, ferrofluid cooled	Diffractionless, 1" (25mm) pivoting, aluminum dome tweeter, ferrofluid cooled
FREQ RESP	55Hz - 19kHz	80Hz - 18.5kHz	38Hz - 20kHz	40Hz - 20kHz
IMPEDANCE	8 Ohms fixed crossover	8 Ohms fixed crossover	8 or 6 Ohms dependant on driver setting	8 or 6 Ohms dependant on driver setting
POWER	5 - 45 Watts	40 Watts	5 - 150 Watts	5 - 125 Watts
SPL	89 dB 1w/1m	87.5 dB 1w/1m	90 dB 1w/1m	90 dB 1w/1m
PRODUCT DIMENSION	8" (203mm) x 3 1/4" (83mm)	4 5/8" (118mm) x 1 13/16" (46mm)	14 7/8" (378mm) x 10 1/8" (257mm) x 4 1/4" (107mm)	12 1/16" (310mm) x 8 3/16" (208mm) x 3 1/4" (83mm)
RETROFIT CUTOUT	6 1/2" (165mm)	3 13/16" (97mm)	13 9/16" (345mm) x 8 3/4" (233mm)	10 13/16" (270mm) x 6 3/4" (172mm)
FASTLOC™ GRILLE DIMENSION	NA	NA	16 5/16" (415mm) x 10 13/16" (274mm)	13 5/8" (346mm) x 8 7/8" (225mm)
BRACKET	NC5CB	NA	NC8WB	NC6WB

SIGNATURE Series

We started with a clean slate and made a statement in our Signature line. Believe your ears when you hear our products. They truly are made with passion and care.

Driver Material: MetaPlex™

• This is an electronically bonded substrate on a copolymer cone. Essentially it is a trilaminate cone. The first layer is a copolymer base material, the second layer is a coating that allows the third layer (green colored surface) to bond to the copolymer.

• Copolymer cones alone are found in other speakers. The key to our material is that the green coating allows for a well damped material (the first layer) to combine with a low mass high stiffness coating (the green layer). This improves the performance by stiffening the cone material that is normally used alone in entry level speakers. Better midrange performance and less bass distortion is the result from less cone breakup.

Tweeter Material: Silk Dome Tweeter

• This material is treated silk. This material is neutral sounding, due to this it is used in many higher end bookshelf and cabinet speakers.



WSLCR650FL



FIT650FL



CS650FL



WS650FL

Signature Series

FIT800FL

8" 2-way, in-ceiling, coaxial, infinite baffle loudspeaker w/ FastLoc™ grille



DRIVER	8" MetaPlex™ composite cone w/butyl rubber surround
TWEETER	Diffractionless, 1" (25mm) pivoting, silk dome tweeter, ferrofluid cooled
FREQ RESP	40Hz - 20kHz
IMPEDANCE	8 Ohms fixed crossover
POWER	5 - 125 Watts
SPL	89.5 dB 1w/1m
PRODUCT DIMENSION	11 1/2" (292mm) x 7 1/8" (182mm)
RETROFIT CUTOUT	10 1/2" (265mm)
FASTLOC™ GRILLE DIMENSION	11 13/16" (300mm)

BRACKET TYPE

NC8FITCbi

FIT650/FIT650FL

6.5" 2-way, in-ceiling, coaxial, infinite baffle loudspeaker



DRIVER	6.5" MetaPlex™ composite cone w/butyl rubber surround
TWEETER	Diffractionless, 1" (25mm) pivoting, silk dome tweeter, ferrofluid cooled
FREQ RESP	42Hz - 20kHz
IMPEDANCE	8 Ohms fixed crossover
POWER	5 - 100 Watts
SPL	90 dB 1w/1m
PRODUCT DIMENSION	9 3/8" (237mm) x 5 5/8" (144mm)
RETROFIT CUTOUT	8 1/4" (210mm)
FASTLOC™ GRILLE DIMENSION	9 3/4" (247mm)

BRACKET TYPE

NC6CB

WSLCR650FL

low profile, in-wall, coaxial, infinite baffle loudspeaker, w/ FastLoc™ grille



DRIVER	Two 6.5" MetaPlex™ composite cones w/butyl rubber surround
TWEETER	Diffractionless, 1" (25mm) pivoting, silk dome tweeter, ferrofluid cooled
FREQ RESP	42Hz - 20kHz
IMPEDANCE	8 Ohms fixed crossover
POWER	5 - 100 Watts
SPL	90 dB 1w/1m
PRODUCT DIMENSION	15 3/4" (401mm) x 8 15/16" (227mm) x 3 7/8" (98.6mm)
RETROFIT CUTOUT	14 1/5" (360.7mm) x 7 3/5" (193mm)
FASTLOC™ GRILLE DIMENSION	17" (432mm) x 9 5/8" (248mm)

BRACKET TYPE

NC6LCRWbi

CS650FL

6.5" 2-way, in-ceiling, coaxial, infinite baffle loudspeaker w/ FastLoc™ grille



DRIVER	6.5" MetaPlex™ composite cone w/butyl rubber surround
TWEETER	Diffractionless, 1" (25mm) pivoting, silk dome tweeter, ferrofluid cooled
FREQ RESP	42Hz - 20kHz
IMPEDANCE	8 Ohms fixed crossover
POWER	5 - 100 Watts
SPL	90 dB 1w/1m
PRODUCT DIMENSION	9 3/8" (237mm) x 3 7/8" (98mm)
RETROFIT CUTOUT	8 1/4" (210mm)
FASTLOC™ GRILLE DIMENSION	9 3/4" (247mm)

BRACKET TYPE

NC6CB

CS650DBFL

6.5" 2-way, low profile dipole/bipole, in-ceiling, coaxial, infinite baffle loudspeaker, w/ FastLoc™ grille



DRIVER	6.5" MetaPlex™ composite cone w/butyl rubber surround
TWEETER	Two 1" (25mm) silk dome tweeters, ferrofluid cooled
FREQ RESP	42Hz - 20kHz
IMPEDANCE	8 Ohms adjustable tweeters, selectable dipole or bipole
POWER	5 - 100 Watts
SPL	90dB 1w/1m
PRODUCT DIMENSION	9 3/8" (237mm) x 3 3/4" (95mm)
RETROFIT CUTOUT	8 1/4" (210mm)
FASTLOC™ GRILLE DIMENSION	9 3/4" (247mm)

BRACKET TYPE

NC6CB

WS650FL/WS650

6.5" 2-way, in-wall, full range loudspeaker w/ FastLoc™ grille

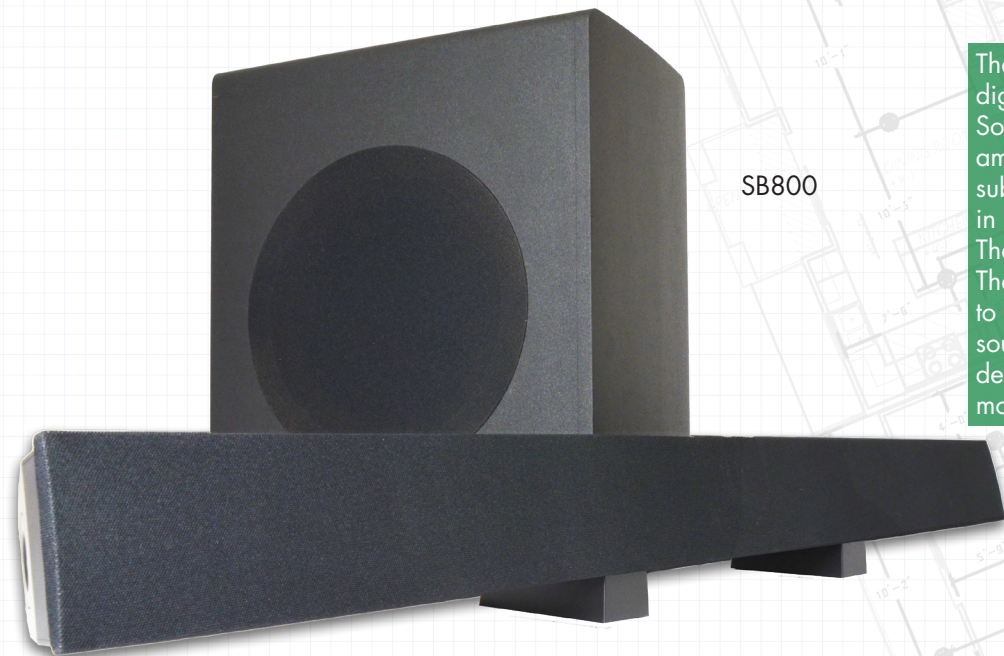


DRIVER	6.5" MetaPlex™ composite cone w/butyl rubber surround
TWEETER	Diffractionless, 1" (25mm) pivoting, silk dome tweeter, ferrofluid cooled
FREQ RESP	42Hz - 20kHz
IMPEDANCE	8 Ohms fixed crossover
POWER	5 - 100 Watts
SPL	90 dB 1w/1m
PRODUCT DIMENSION	12 1/16" (310mm) x 8 3/16" (208mm) x 3 1/4" (83mm)
RETROFIT CUTOUT	10 13/16" (270mm) x 6 3/4" (172mm)
FASTLOC™ GRILLE DIMENSION	13 5/8" (346mm) x 8 7/8" (225mm)

BRACKET TYPE

NC6WB

SOUNDBARS



SB800

The SB800 SoundBars deliver the latest digital technology in amplified speaker SoundBars with a powerful wireless amplified MegaBass subwoofer. The subwoofer can be located anywhere in the room. This is the perfect Home Theater System with a wide sound stage. The system comes with a handheld remote to control power, switch inputs and adjust sound fields. The slim depth and sleek design blends with all flat LED/LCD TV models.




SoundBars

SB800

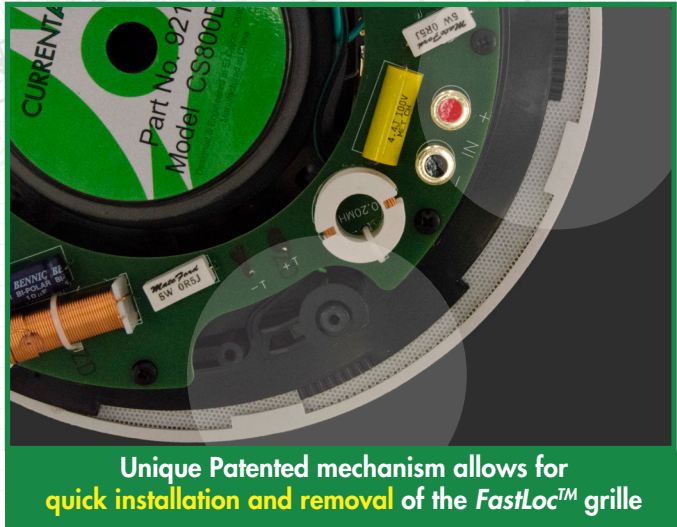
120 watt six drivers with two tweeters soundBar and 180 watt 8" wireless subwoofer  **Bluetooth**™ streaming



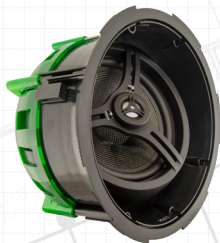
SOUNDBAR POWER	60 Watts RMS/120 Watts peak
SUBWOOFER POWER	80 Watts RMS/180 Watts peak
TOTAL POWER	140 Watts RMS/300 Watts peak
SPL	113.6dB
SOUND MODE	3 Enhanced DSP surround modes
SPEAKERS	8 speakers, six 2.5" midrange drivers and two 1.25" tweeters
SUBWOOFER	2.4ghz 8" long throw ported woofer
AUDIO INPUTS	Digital optical, digital coaxial, RCA, 3.5mm
 Bluetooth ™	Connectivity for iPhone, Android, mp3 and PC
FREQUENCY RESPONSE	20Hz to 20kHz
SOUNDBAR DIMENSIONS	39 3/4" (1010mm) x 3 1/2" (89mm) x 3 5/16" (84mm)
SUBWOOFER DIMENSIONS	17 1/8" (435mm) x 8 11/16" (221mm) x 14 1/4" (362mm)

FASTLOC™ APPLICATION

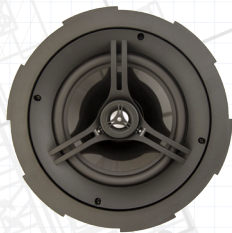
FastLoc™ grilles take only seconds to twist into place. This allows for easy access to the installed speaker for quick, custom positioning. Offering the smallest exposed plastic bezel in the industry - ***virtually invisible!***



Available in:



FIT Series



CS Series



BCS Series

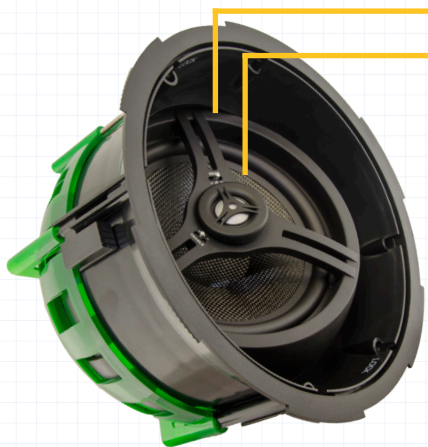


In-Wall Series



LCR Theater Series

FIT APPLICATION



Patented three-dimensional woofer positioning

Patented diffractionless, pivoting tweeter

The only speaker with the Patented Positive Positioning Lock
Clear, undistorted sound where you want it, with deeper room penetration

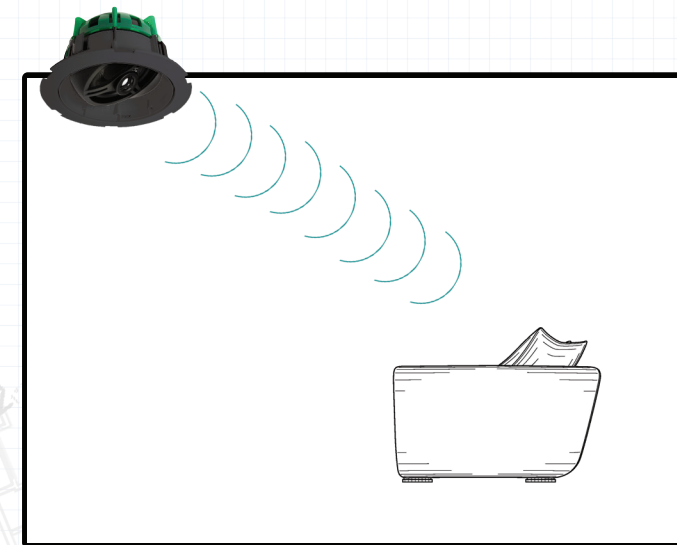
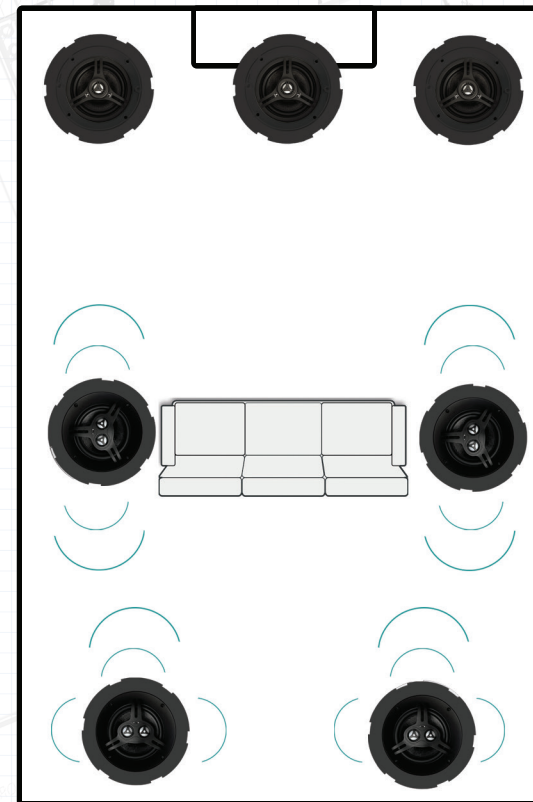
FIT series (Focused Image Technology™) ceiling speakers incorporate a patented design that allows for precise focusing of the acoustic image to the desired listening area. No other manufacturer allows for the range of adjustability that this product offers. The FIT series should be your first choice when purchasing home theater and distributed audio speakers. The FIT speaker puts the sound where you want it, not where you place it.

FIT series speakers features include 3 position EQ switches, gold press terminals and weatherized, perforated aluminum grilles. All Focused Image Technology™ speakers are available in FastLoc™ Grilles (patented). Also available in standard press fit grille is the FIT650.

Woofer. The Focused Image Technology™ series incorporates the patented (*positive positioning lock*) or PPL. Once positioned, PPL allows for the woofer to be securely locked into place. The patented locking feature consistently focuses all of the energy to your sweet spot. In addition, the lock prevents the woofer assembly from moving and changing the sweet spot due to temperature and humidity variations. No other manufacturer in the marketplace can offer this exclusive locking feature.

Tweeter. Not only is our patented tweeter diffractionless, it's also easily positioned to the sweet spot of the room allowing for a cleaner and more natural sound.

FastLoc grille. The Focused Image Technology™ series are available with our patented FastLoc™ grilles. The look of these grilles have revolutionized the industry. They are extremely easy to install with consistent fit and finish. FastLoc™ offers the industry's smallest exposed bezel. The mechanism that locks the grille in place is secure and vibration free.

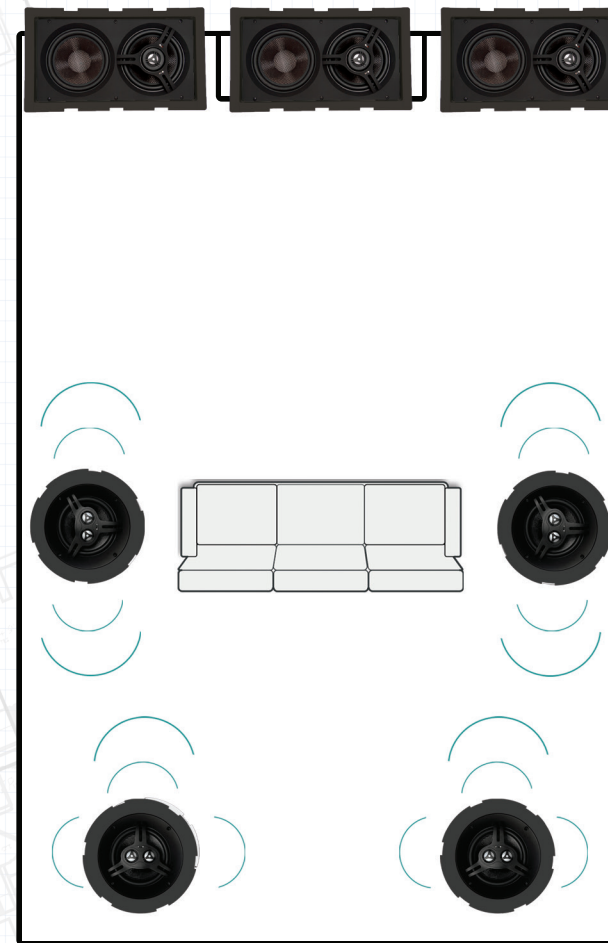


LCR THEATER APPLICATION

The easy to install LCR Theater Series are best in class in-wall loudspeakers that incorporate high tech woofer materials with a butyl rubber surround and state of the art, 1" Patented diffractionless, pivoting, ferrofluid-cooled dome tweeters, ensuring true left/center/right sound with flawless imaging.

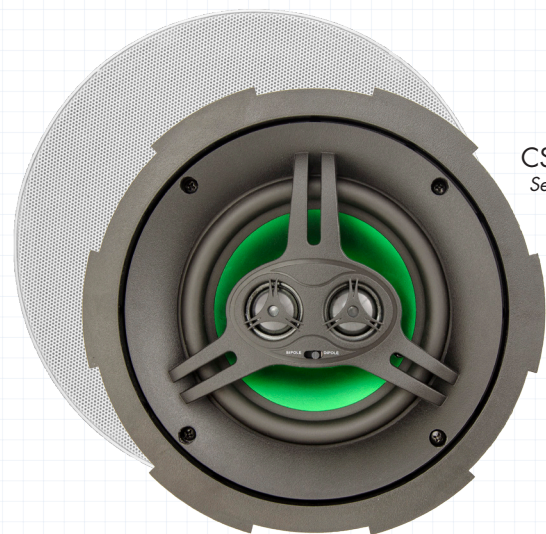


WSLCR654FL
See specs on page 15

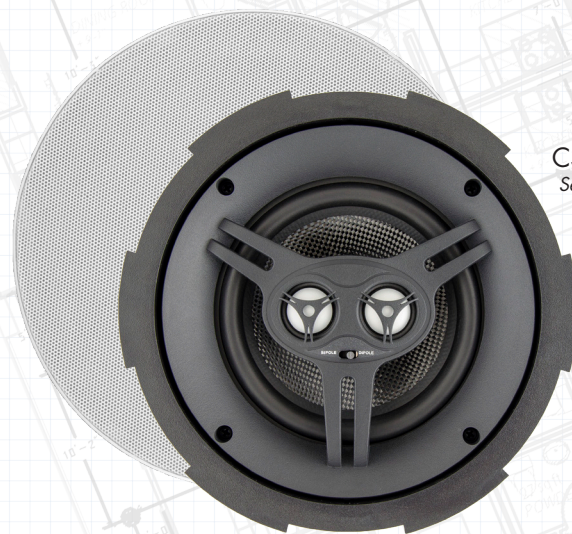


DIPOLE/BIPOLE APPLICATION

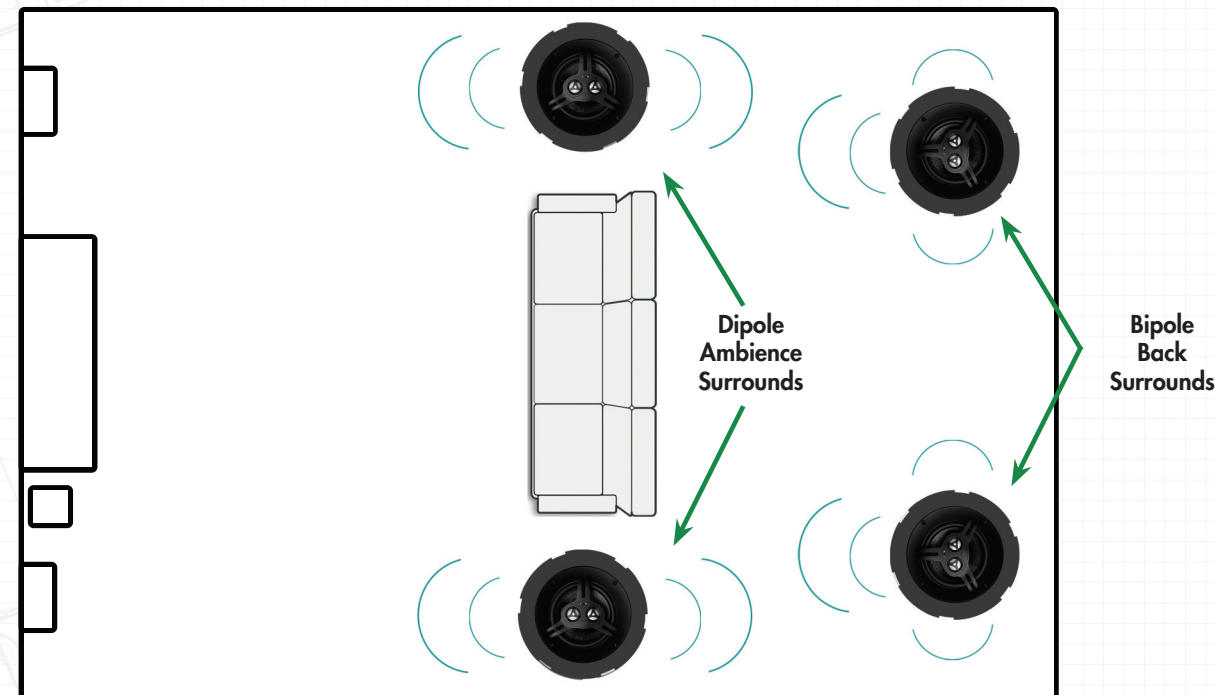
The Dipole/Bipole Series delivers a sound much like you'd experience in a movie theater that has multiple surround speakers. This dual-purpose speaker rolls both side surround and surround back applications in one package, with a switch on the tweeter bridge deciding functionality. The dipole function sets tweeters out of phase to create a null around the listening area that detunes the localization for ambience, while the bipole functionality sets tweeters in phase to enhance localization for Dolby Digital EX, DTS-ES, THX-EX and Dolby True HD. Patented FastLoc™ grilles slip into place without magnets and offer the smallest exposed bezel on the market, seamlessly blending the speaker into the ceiling.



CS650DBFL
See specs on page 19

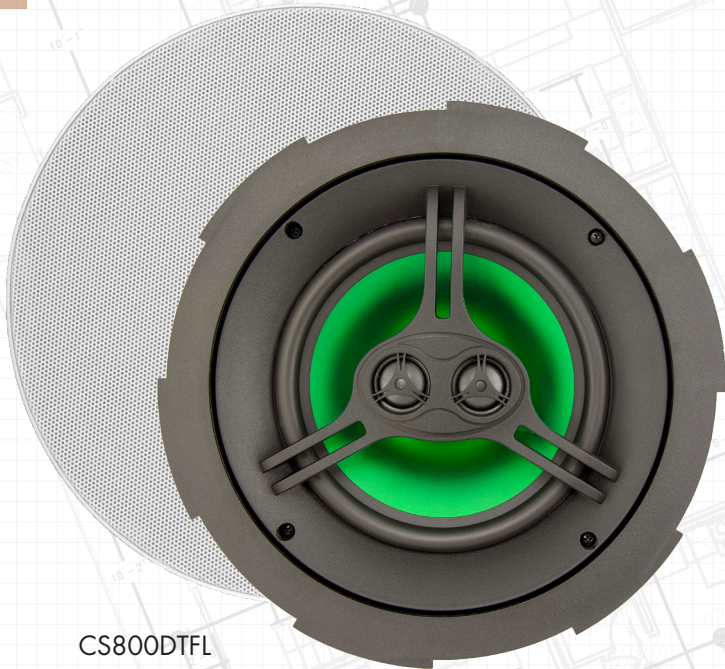


CS654DBFL
See specs on page 15



DUAL TWEETER *Series*

The easy to install Dual Tweeter Series is a full range stereo ceiling loudspeaker in a single speaker package, perfect for bathroom and hallway applications where a pair of speakers isn't practical. The dual voice coil woofer offers revolutionary natural sound for foreground and background applications.

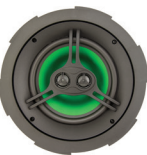


CS800DTFL

Dual Tweeter Series Ceiling Speakers

CS800DTFL

8" 2-way, low profile, in-ceiling, coaxial, infinite baffle loudspeaker, w/ FastLoc™ grille



CS650DTFL

6.5" 2-way, in-ceiling, coaxial, infinite baffle, dual input stereo, single loudspeaker, w/ FastLoc™ grille



BCS65DTFL

6.5" 2-way, in-ceiling, coaxial, infinite baffle, dual input stereo, single loudspeaker, w/ FastLoc™ grille



DRIVER	8" Dual voice coil MetaPlex™ composite cone w/ butyl rubber surround	6.5" Dual voice coil MetaPlex™ composite cone w/butyl rubber surround	6.5" Dual voice coil, talc filled polypropylene cone w/ butyl rubber surround
TWEETER	Two 1" (25mm) silk dome tweeters, ferrofluid cooled	Two 1" (25mm) silk dome tweeters, ferrofluid cooled	Fixed 5/8" (16mm) polycarbonate dome, ferrofluid cooled
FREQ RESP	40Hz - 20kHz	42Hz - 20kHz	58Hz - 19.5kHz
IMPEDANCE	8 Ohms fixed crossover	8 Ohms fixed crossover	8 Ohms
POWER	5 - 125 Watts	5 - 100 Watts	5 - 55 Watts
SPL	89.5 dB 1w/1m	90 dB 1w/1m	87 dB 1w/1m
PRODUCT DIMENSION	11 1/2" (292mm) x 4 4/16" (112mm)	9 3/8" (237mm) X 3 3/4" (95mm)	9 3/8" (237mm) x 2 13/16" (68mm)
RETROFIT CUTOUT DIAMETER	9 7/16" (240mm)	8 1/4" (210mm)	8 1/4" (210mm)
FASTLOC™ GRILLE DIAMETER	11 13/16" (300mm)	9 3/4" (247mm)	9 3/4" (247mm)

BRACKET

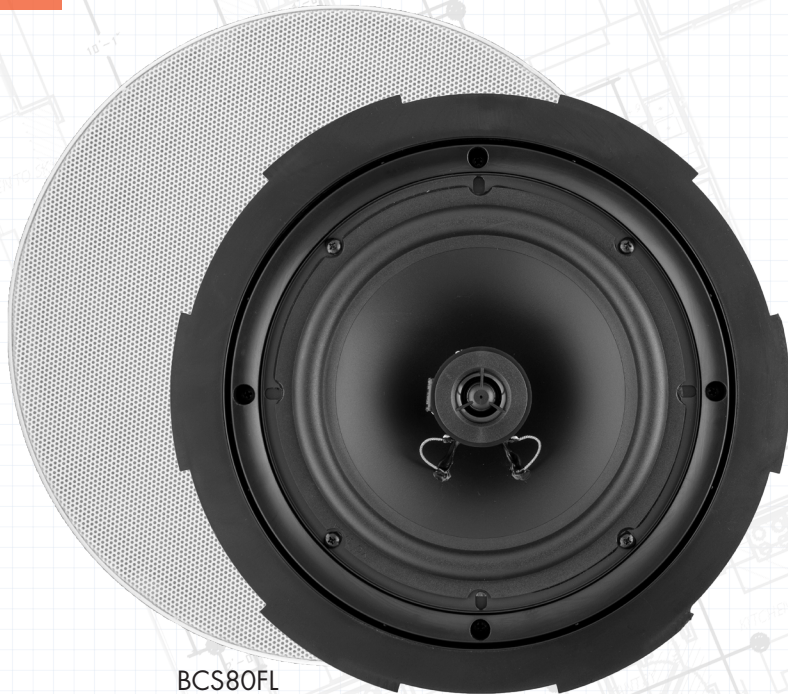
NC8CB

NC6CB

NC6CB

CONTRACTOR *Series*

Built to install easily in both residential and commercial applications, the BCS Series provides the best possible sound at a value price level. Their talc filled polypropylene cone drivers, butyl rubber surrounds and polycarbonate, ferrofluid-cooled dome tweeters are sure to outperform similar products at much higher price points.



BCS80FL

Contractor Series Ceiling Speakers

BCS80FL

8" 2-way, in-ceiling, coaxial, infinite baffle loudspeaker, w/ FastLoc™ grille



DRIVER	8" Talc filled polypropylene cone w/butyl rubber surround
TWEETER	Fixed 13mm polycarbonate dome, ferrofluid cooled
FREQ RESP	50Hz - 19.5kHz
IMPEDANCE	8 Ohms
POWER	5 - 60 Watts
SPL	88.5 dB 1w/1m
PRODUCT DIMENSION	11 1/2" (292mm) x 3 3/8" (85.7mm)
RETROFIT CUTOUT DIAMETER	9 3/4" (247mm)
FASTLOC™ GRILLE DIAMETER	11 13/16" (300mm)

BRACKET

NC8CB

BCS65

6.5" 2-way, in-ceiling, coaxial, infinite baffle loudspeaker



DRIVER	6.5" Talc filled polypropylene cone w/butyl rubber surround
TWEETER	Fixed 13mm polycarbonate dome, ferrofluid cooled
FREQ RESP	58Hz - 19.5kHz
IMPEDANCE	8 Ohms
POWER	5 - 55 Watts
SPL	87 dB 1w/1m
PRODUCT DIMENSION	9 11/16" (246mm) x 2 13/16" (68mm)
RETROFIT CUTOUT DIAMETER	8 1/4" (210mm)

BRACKET

NC6CB

BCS65FL

6.5" 2-way, in-ceiling, coaxial, infinite baffle loudspeaker, w/ FastLoc™ grille



DRIVER	6.5" Talc filled polypropylene cone w/butyl rubber surround
TWEETER	Fixed 13mm polycarbonate dome, ferrofluid cooled
FREQ RESP	58Hz - 19.5kHz
IMPEDANCE	8 Ohms
POWER	5-55 Watts
SPL	87 dB 1w/1m
PRODUCT DIMENSION	9 3/8" (237mm) x 2 13/16" (68mm)
RETROFIT CUTOUT DIAMETER	8 1/4" (210mm)
FASTLOC™ GRILLE DIAMETER	9 3/4" (247mm)

BRACKET

NC6CB

BCS65DTFL

6.5" 2-way, in-ceiling, coaxial, infinite baffle, dual input stereo, single loudspeaker, w/ FastLoc™ grille



DRIVER	6.5" Dual voice coil, talc filled polypropylene cone w/butyl rubber surround
TWEETER	Dual 16mm polycarbonate dome, ferrofluid cooled
FREQ RESP	58Hz - 19.5kHz
IMPEDANCE	8 Ohms
POWER	5 - 55 Watts
SPL	87 dB 1w/1m
PRODUCT DIMENSION	9 3/8" (237mm) x 2 7/8" (75mm)
RETROFIT CUTOUT DIAMETER	8 1/4" (210mm)

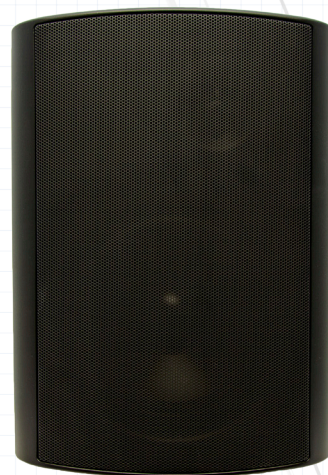
BRACKET

NC6CB

PRO Series



SPA525FR



OC65B-70V



OC525W-70V

Whether you need speakers for a resort in Las Vegas, boardroom in New York or a yoga studio in Northern California our Pro Series speaker lineup provides a best in class solution. These dynamic sounding speakers will deliver improved low frequency response, higher highs and great mid range in all applications. Our Pro Series speakers will enhance any project.

Pro Series

SPA525FR

5.25" low profile, UL listed, in-ceiling, full range loudspeaker, w/ Fastloc™ grille w/back can



SUB801-70V

8" 8 Ohm/70Volt, indoor/outdoor in-ceiling subwoofer w/back can



DRIVER	5.25" Paper cone, cloth surround	8" Injection molded carbon fiber w/butyl rubber surround
TWEETER	N/A	N/A
FREQ RESP	75Hz-18kHz	35Hz-300kHz
IMPEDANCE	8 Ohms	8 Ohms fixed crossover
POWER	16 Watts continuous & 32 Watts program	5-150 Watts @ 8Ω 60-30-15 Watts @ 70volts
SPL	83 dB 1w/1m	90dB 1w/1m
PRODUCT DIMENSION	9 3/4" (248mm) x 4" (102mm)	10 11/16" (273mm) x 7 1/2" (190.5mm)
RETROFIT CUTOUT DIAMETER	8 15/16" (227mm)	9 7/16" (240 mm)
BRACKET	Included	NC8CB

OC65B-70V

6.5" 2-way indoor/outdoor, full range loudspeaker



OC525B-70V

5.25" 2-way indoor/outdoor, full range loudspeaker



OC525W-70V

5.25" 2-way indoor/outdoor, full range loudspeaker



DRIVER	6.5" Mica filled polypropylene cone w/butyl rubber surround	5.25" Mica filled polypropylene cone w/butyl rubber surround	5.25" Mica filled polypropylene cone w/butyl rubber surround
TWEETER	1" (25mm) Silk dome	5/8" (13mm) Polycarbonate dome	5/8" (13mm) Polycarbonate dome
FREQ RESP	47Hz - 20kHz	52Hz - 20kHz	52Hz - 20kHz
POWER	30 Watts @ 70Volts	30 Watts @ 70Volts	30 Watts @ 70Volts
SPL	90 dB 1w/1m	89 dB 1w/1m	89 dB 1w/1m
PRODUCT DIMENSION	8 1/2" (215 mm) x 7 11/16" (194 mm) x 11 7/8" (301 mm)	7 5/16" (185mm) x 6 1/2" (165mm) x 9 7/8" (249 mm)	7 5/16" (185mm) x 6 1/2" (165mm) x 9 7/8" (249 mm)

SUBWOOFER

Series

The FL Series is a complete line of powered, front firing, floor-standing subwoofers with both line level and speaker level inputs. The slotted port helps the sub reproduce tight, crisp bass, which is ideal for both movies and music.



FLSUB-10
*Pictured without cloth grille.

Subwoofer			
	FLSUB-10 10" floor subwoofer *Pictured without grille. Includes cloth grille.		FLSUB-8B 8" floor subwoofer *Pictured without grille. Includes cloth grille.
			FLSUB-8W 8" floor subwoofer *Pictured without grille. Includes cloth grille.
DRIVER	10" Mica treated paper pulp cone w/ butyl rubber surround	Front firing active 8" w/ down firing 8" passive radiator	Front firing active 8" w/ down firing 8" passive radiator
POWER HANDLING	175 Watts	250 Watts	250 Watts
SPL	112 dB 1w/1m @ 30Hz	N/A	N/A
FREQ RESPONSE	25Hz-250Hz	25Hz-200Hz	25Hz-200Hz
IMPEDANCE	8 Ohms variable crossover 40-150Hz	NA	NA
INPUTS	RCA (lfe) and high level speaker inputs with high pass output @75Hz to satellite speakers	RCA	RCA
OUTPUTS	High pass filtered line level and speaker level	N/A	N/A
ADJUSTMENTS	Level, crossover and phase	Level, crossover and phase	Level, crossover and phase
LENGTH x WIDTH x DEPTH	17 1/4" (437mm) x 13 2/8" (328mm) x 19" (483mm)	10 1/2" (267mm) x 12" (305mm) x 11" (280mm)	10 1/2" (267mm) x 12" (305mm) x 11" (280mm)
WEIGHT	44 lbs	17 lbs	17 lbs

OUTDOOR Series



OC8W

OC8B

Outdoor simulated rock speakers are ‘heard but not seen’ in outdoor landscapes, resembling real rock right down to the grille. The single stereo, standalone speaker is built with dual voice coils and tweeters to deliver both left and right sound in one package — providing high fidelity sound required in outdoor environments. Encased in a totally weatherized material and offered in two colors, they can withstand sun, rain, heat, cold, fog and coastal dew, even deterring theft via a threaded insert for an eyebolt for added security.

This dual-purpose loudspeaker series is the perfect choice for main listening or sound reinforcement applications, with a ported bass reflex that supplies serious sound. Graphite mica filled polypropylene woofer cones and butyl rubber surround are impervious to the weather and insects, and perforated powder-coated aluminum alloy grilles are corrosion-resistant and rustproof.



OR6S

OR6G

Outdoor Speakers

OC8B

8" 2-way, indoor/outdoor, full range loudspeaker



OC8W

8" 2-way, indoor/outdoor, full range loudspeaker



OC65B

6.5" 2-way, indoor/outdoor, full range loudspeaker



OC65W

6.5" 2-way, indoor/outdoor, full range loudspeaker



DRIVER	8" Mica filled polypropylene cone w/butyl rubber surround	8" Mica filled polypropylene cone w/butyl rubber surround	6.5" Mica filled polypropylene cone w/butyl rubber surround	6.5" Mica filled polypropylene cone w/butyl rubber surround
TWEETER	1" (25mm) titanium dome, ferrofluid cooled	1" (25mm) titanium dome, ferrofluid cooled	1" (25mm) titanium dome, ferrofluid cooled	1" (25mm) titanium dome, ferrofluid cooled
FREQ RESP	42Hz - 20kHz	42Hz - 20kHz	47Hz - 20kHz	47Hz - 20kHz
IMPEDANCE	8 Ohms fixed crossover	8 Ohms fixed crossover	8 Ohms fixed crossover	8 Ohms fixed crossover
POWER	5 - 150 Watts	5 - 150 Watts	5 - 125 Watts	5 - 125 Watts
SPL	90 dB 1w/1m	90 dB 1w/1m	90 dB 1w/1m	90 dB 1w/1m
HEIGHT x WIDTH x DEPTH	16 1/2" (419mm) X 11" (279.4mm) X 10" (254mm)	16 1/2" (419mm) X 11" (279.4mm) X 10" (254mm)	12 1/8" (308mm) x 8 1/2" (216mm) x 8 1/8" (206mm)	12 1/8" (308mm) x 8 1/2" (216mm) x 8 1/8" (206mm)

OC525B

5.25" 2-way, indoor/outdoor, full range loudspeaker



OC525W

5.25" 2-way, indoor/outdoor, full range loudspeaker



OR6G

6.5" 2-way, outdoor rock speaker, dual input stereo. Can be used as a single stand alone or separates for true stereo



OR6S

6.5" 2-way, outdoor rock speaker, dual input stereo. Can be used as a single stand alone or separates for true stereo



DRIVER	5.25" Mica filled polypropylene cone w/butyl rubber surround	5.25" Mica filled polypropylene cone w/butyl rubber surround	6.5" Mica filled polypropylene cone w/dual voice coil and butyl rubber surround	6.5" Mica filled polypropylene cone w/dual voice coil and butyl rubber surround
TWEETER	1" (25mm) titanium dome, ferrofluid cooled	1" (25mm) titanium dome, ferrofluid cooled	Dual 3/4" (19mm) titanium dome tweeters, ferrofluid cooled	Dual 3/4" (19mm) titanium dome tweeters, ferrofluid cooled
FREQ RESP	52Hz - 20kHz	52Hz - 20kHz	47Hz - 20kHz	47Hz - 20kHz
IMPEDANCE	8 Ohms fixed crossover	8 Ohms fixed crossover	8 Ohms fixed crossover	8 Ohms fixed crossover
POWER	5 - 100 Watts	5 - 100 Watts	5 - 125 Watts	5 - 125 Watts
SPL	89 dB 1w/1m	89 dB 1w/1m	88.5 dB 1w/1m	88.5 dB 1w/1m
HEIGHT x WIDTH x DEPTH	9 7/8" (251mm) x 6 3/4" (171mm) x 6 1/4" (159mm)	9 7/8" (251mm) x 6 3/4" (171mm) x 6 1/4" (159mm)	12" (304mm) x 14" (356mm) x 11" (279mm)	12" (304mm) x 14" (356mm) x 11" (279mm)

ACCESSORIES

New Construction Brackets

Pre-wire prior to drywall,
new construction speaker
mounting brackets

NC6CB



SPEAKER CROSS-REFERENCE

CS650, CS654FL, CS651FL, CS650FL, CS654DBFL, CS650DBFL, CS650DTFL, FIT650, FIT654FL, FIT651FL, FIT650FL, BCS65FL, BCS65, BCS65DTFL

NC8CB



CS804FL, CS801FL, CS800DTFL, CS801, BCS80FL

NC5CB



CS501FL, CS501

NC8FITCBi



FIT804FL, FIT801FL, FIT800FL

NC6WB



WS651FL, WS650FL, WS650

NC8WB



WS801FL

NC6LCRWB i



WSLCR654FL, WSLCR650FL

Tile Bridge Brackets

TB6



SPEAKER CROSS-REFERENCE

CS650, CS650FL, CS651FL, CS654FL, CS650DTFL, CS650DBFL, CS654DBFL, FIT650, FIT654FL, FIT651FL, FIT650FL, BCS65FL, BCS65, BCS65DTFL

TB8



CS804FL, CS801FL, CS800DTFL, CS801, BCS80FL

TBFIT8



FIT804FL, FIT801FL, FIT800FL



Wooden Back Box

CS65BB

Wooden backbox for 65 series ceiling speaker

LENGTH x WIDTH x DEPTH	12" (304.8mm) x 12" (304.8mm) x 6" (152.2mm)
OPENING DIAMETER	8 3/8" (213mm)
SPEAKER CROSS REFERENCE	FIT650, FIT650FL, FIT651FL, FIT654FL, CS650, CS650FL, CS651FL, CS654FL, CS650DTFL, CS650DBFL, CS654DBFL, BCS65FL, BCS65, BCS65DTFL



CS Back Cans

CS65BC

Acoustical rear enclosure, ready to attach, comes complete with gold constant tension binding posts, wiring and dacron dampening material

PRODUCT DIMENSION	8 1/10" (205mm) x 5 4/9" (138mm)
SPEAKER CROSS-REFERENCE	CS650, CS650FL, CS651FL, CS654FL, CS650DTFL, CS650DBFL, CS654DBFL, BCS65FL, BCS65, BCS65DTFL

*Fits speakers produced from November 2011 and later.

CS80BC

Acoustical rear enclosure, ready to attach, comes complete with gold constant tension binding posts, wiring and dacron dampening material

PRODUCT DIMENSION	9 3/5" (244mm) x 7 1/10" (180mm)
SPEAKER CROSS-REFERENCE	CS801, CS804FL, CS801FL, CS800DTFL, BCS80FL

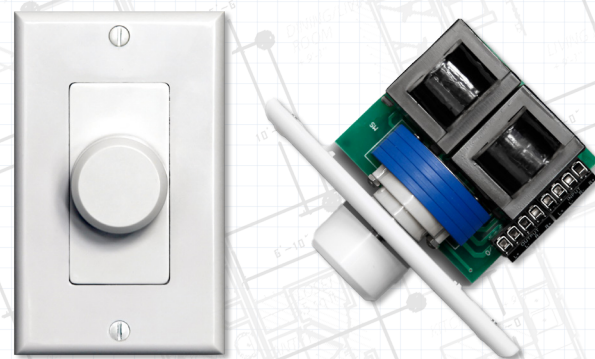
*Fits speakers produced from November 2011 and later.



Wire Whisker Plate

WWP

The Current Audio WWP universal Wire Whisker Pass Through Plate allows installers to offer a clean on wall wire management device. There is no need to stock multiple plates and connectors for various wire feeds. The WWP does it all! You have a choice of brush color - white or black. The WWP may be double or triple ganged for larger wire feeds. **Available in Black or White.**



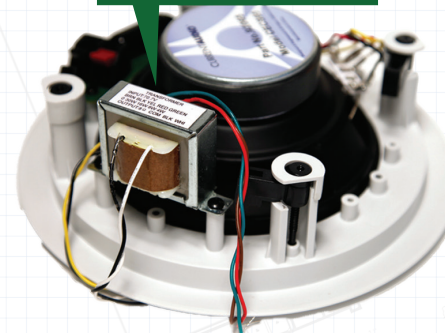
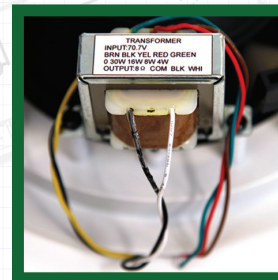
ZLoc Volume Control

ZL75WIA

High quality stereo autoformer, multiple speaker impedance matching, 12 step rotary knob, make before break switching volume control



PLATE STYLE	Decora
CONTROL SWITCH SILENT STEP	12-step rotary knob
FREQUENCY RESPONSE	20Hz-20kHz
POWER HANDLING	75 Watt RMS
PAIRS OF SPEAKERS BY JUMPER POSITION	1-2-4-8
DEPTH BEHIND PLATE X HEIGHT OF CIRCUIT BOARD	2.688" (6.8cm) X 2.87" (7.3cm)
INCLUDED FACEPLATES	White, Ivory and Almond



Transformer

R70VT

Multi-tap 70V to 8 Ohm transformer, 70 volt line common, mounts directly onto WS, CS, CSFL, CE Series speakers



TAPS	70 volt to 8 ohms, color coded wattage wire taps 30 Watt, 16 Watt, 8 Watt, 4 Watt
------	--



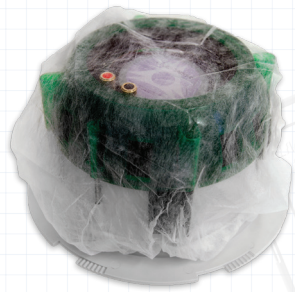
Speaker Selector

4PS

Four Pair Manual Stereo Speaker Selector



POWER	40 Watts RMS @ 8 ohms
MAX WIRE GAUGE	#14
LENGTH x WIDTH x DEPTH (WEIGHT)	2" (50mm) x 8 5/8" (216mm) x 4 2/5" (112mm) 1.8 lbs.



Speaker Insulation



SpeKap

- Breathable membrane insulation and debris speaker cap
- Keeps insulation, debris, and rodent droppings out of the speaker
- Fits most 5" to 8" in-ceiling and in-wall speakers



CURRENTAUDIO®



Find us on
Facebook



CUSTOM
ELECTRONIC
DESIGN &
INSTALLATION
ASSOCIATION

Member

www.currentaudio.com • Email: info@currentaudio.com • Sales: 866-927-7181

Corporate Office: 3490 SW 30th Avenue, Dania Beach, FL 33312 • Sales/Training: 8141 Center St, La Mesa, CA 91942

©2017 Current Audio LLC, All product specifications are subject to change without notice.

Rev. PGv6_2017_0517