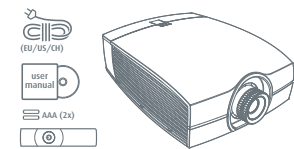
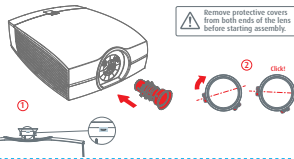


1 Quick Setup Guide

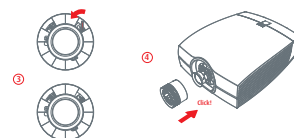
2 Packaging Contents



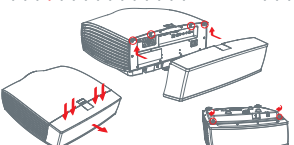
3 Lens Assembly A



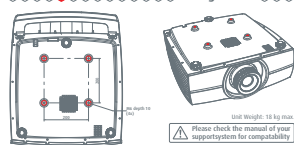
4 Lens Assembly B



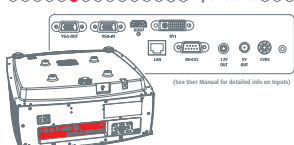
5 Cable Cover



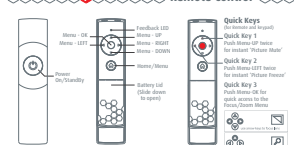
6 Ceiling Mount



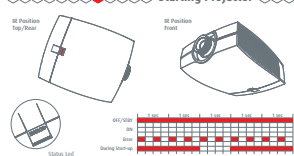
7 Input Cables



8 Remote Control



9 Starting Projector



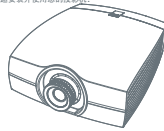
10 OSD Lite Menu



11 Important Info

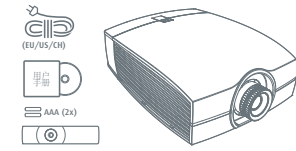
Remove the lens before transporting the projector.  
 Do not block the ventilation in- and outlets.  
 Using the projector at a non recommended tilt angle will reduce the lifetime of the light source or create unexpected behaviour of the unit.  
 Pointing with a laser device into the lens can cause severe damage to the DMD. This damage is not covered by warranty.

For more information and Maintenance Guidelines, check the Detailed User Manual on: <http://www.barc.com.au/products-solutions/projectors>

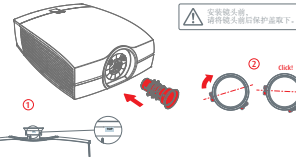


快速安装手册

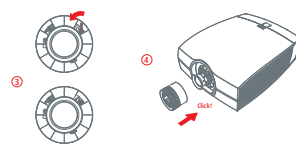
1 箱内物品



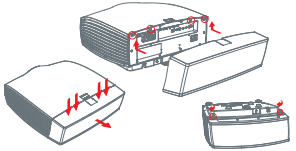
2 镜头的安装 A



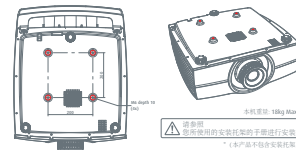
3 镜头的安装 B



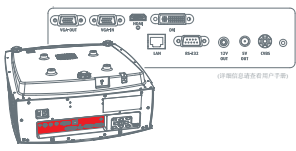
4 接口后盖的拆装



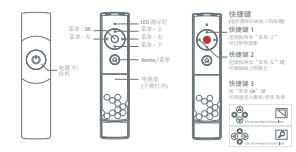
5 安装托架



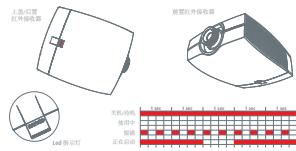
6 接口信息



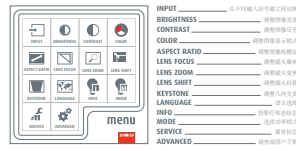
7 遥控器



8 启动投影机



9 OSD 精简菜单



10 重要信息

