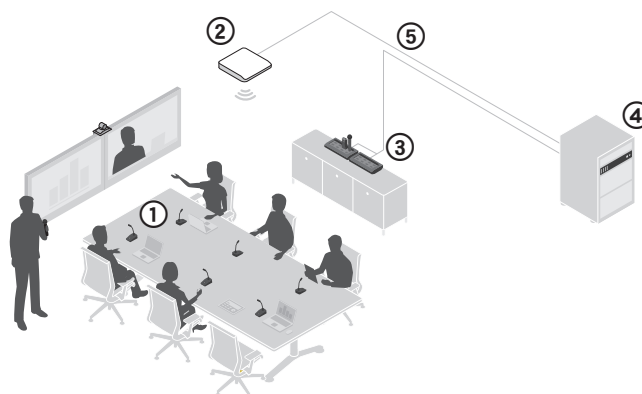
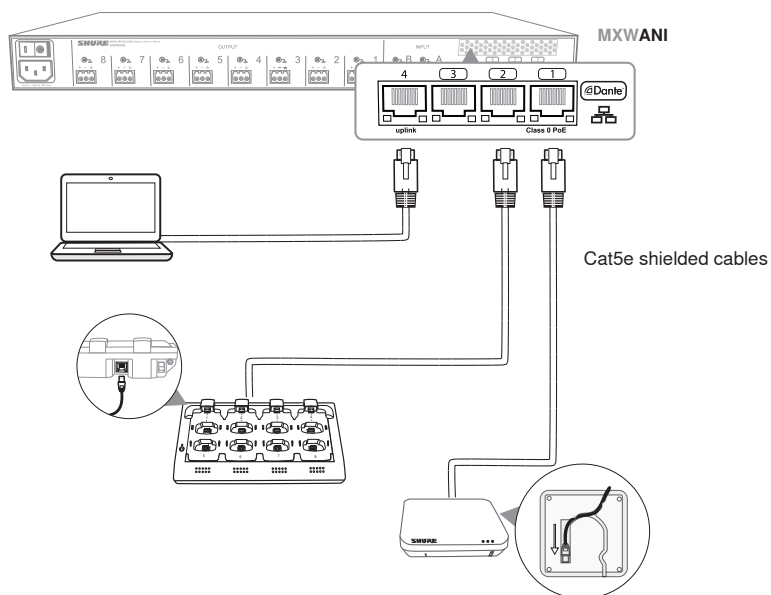


MXW Wireless System

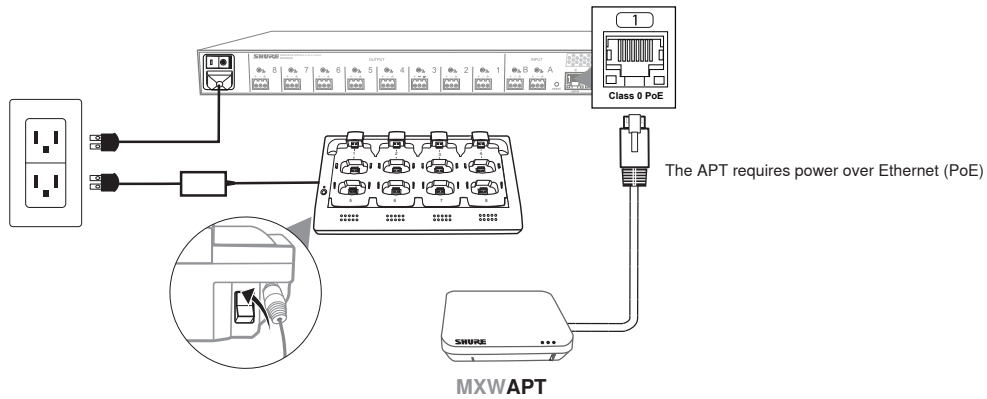


- ① Wireless Microphones
- ② System processor and wireless transceiver
- ③ Microphone linking and charging station
- ④ Analog output device with gigabit network switch
- ⑤ Shielded Cat5e cables (not included)

Connect the System

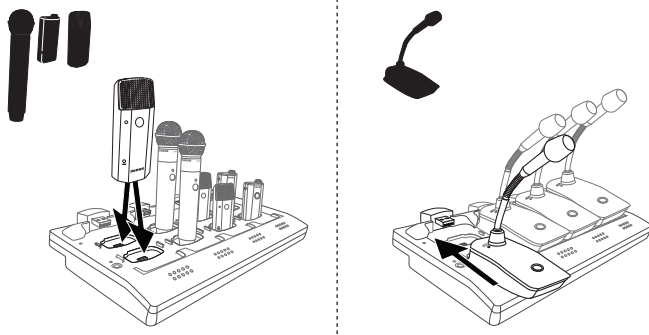


Power On the Devices



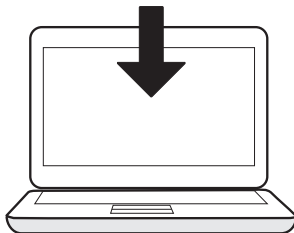
Charge the Microphones

Note: the MXWNCS2 does not operate with gooseneck microphones.

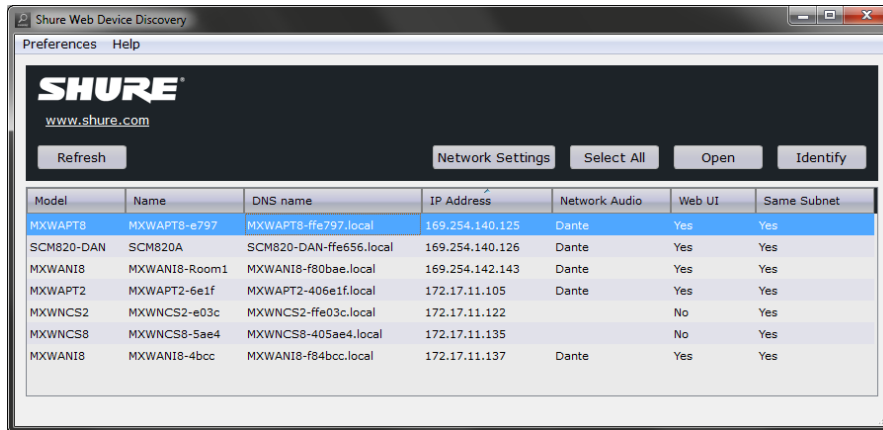


Download the Shure Discovery Application

To discover and access Shure devices on the network, download the Shure Web Device Discovery application from the Shure website.



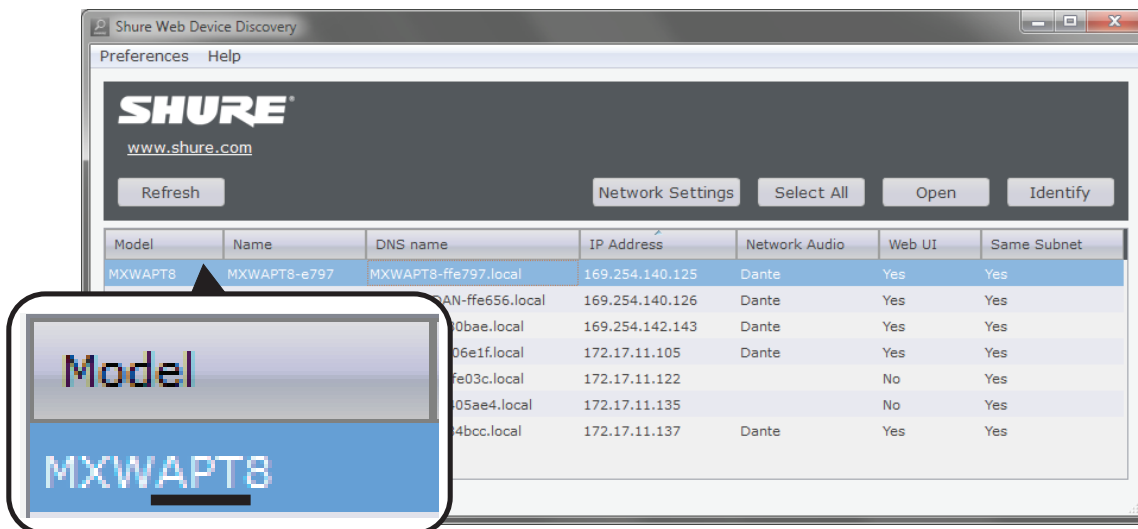
View Devices on the Network



Model	Name	DNS name	IP Address	Network Audio	Web UI	Same Subnet
MXWAPT8	MXWAPT8-e797	MXWAPT8-ffe797.local	169.254.140.125	Dante	Yes	Yes
SCM820-DAN	SCM820A	SCM820-DAN-ffe656.local	169.254.140.126	Dante	Yes	Yes
MXWANI8	MXWANI8-Room1	MXWANI8-f80bae.local	169.254.142.143	Dante	Yes	Yes
MXWAPT2	MXWAPT2-6e1f	MXWAPT2-406e1f.local	172.17.11.105	Dante	Yes	Yes
MXWNCS2	MXWNCS2-e03c	MXWNCS2-ffe03c.local	172.17.11.122		No	Yes
MXWNCS8	MXWNCS8-5ae4	MXWNCS8-405ae4.local	172.17.11.135		No	Yes
MXWANI8	MXWANI8-4bcc	MXWANI8-f84bcc.local	172.17.11.137	Dante	Yes	Yes

The Discovery app displays Shure devices networked to the computer.

Open the APT Web Interface



The default password is admin

Select Devices for the Group

MXWAPT User:Admin Log Off **SHURE** Microflex Wireless

Monitor Configuration Utility Preferences Language English Help

Instructions

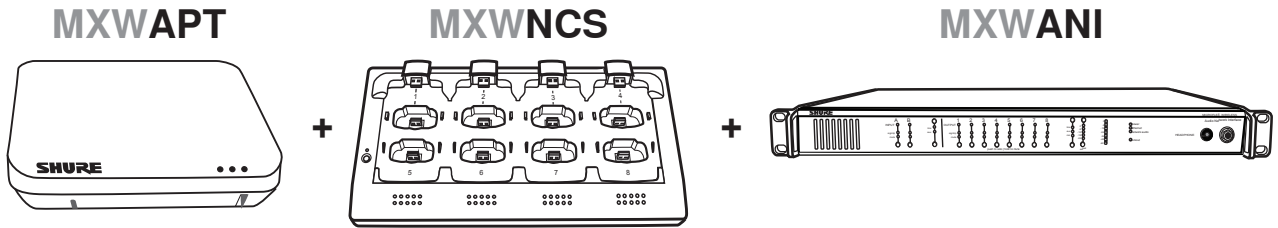
All devices selected in the Configuration Tab will be managed as a single system.
All Linked microphones will behave according to the Preferences Tab selections.

Configuration Lock
 Configuration Lock

Follow the steps below to build a multi-channel MXW Configuration.

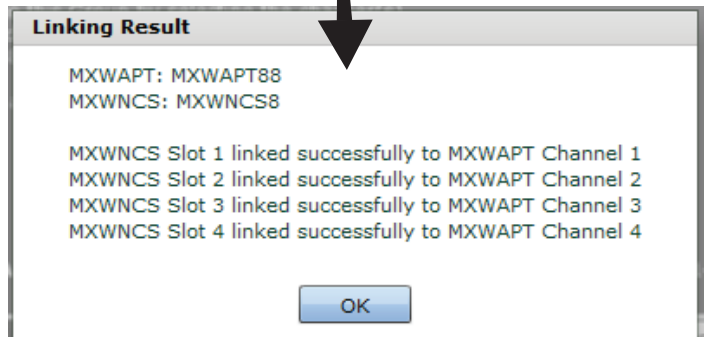
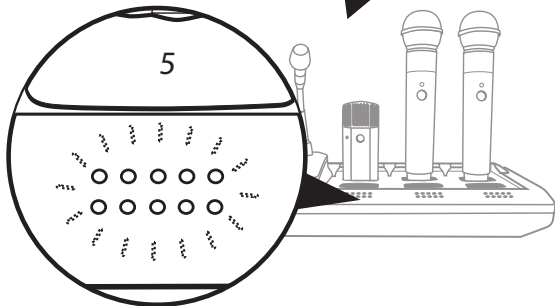
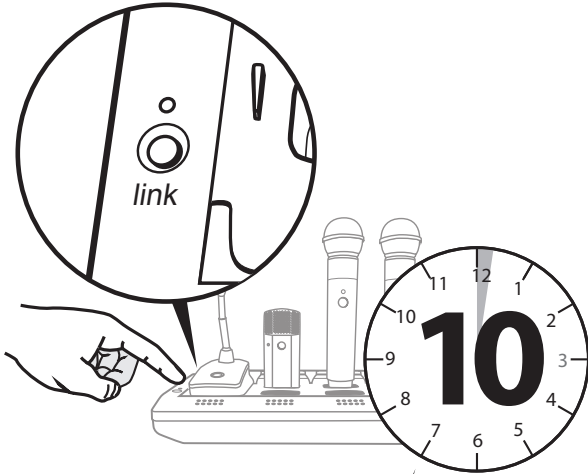
1. Create a Group by selecting an Access Point (MXWAPT) from the drop-down in Row 1
2. Add a Network Charging Station (MXWNCS) to this Group by selecting the charger(s)
3. Place Microphones in desired Charger Slots and press Link to assign each mic to an APT channel
4. Select your Output Device (MXWANI or SCM820) to route Dante audio automatically to the analog outputs
5. Repeat the above steps for Row 2, 3, etc., to add additional Group to this Configuration
6. Lock the configuration

Access Point Transceivers		Network Charging Stations		Output Devices	
Group	APT	NCS A	NCS B	OUT A	OUT B
1	ID MXWAPT8-Room1	ID Link MXWNCS8-... (none) MXWNCS8-Room1	(none)	ID (none) (none) MXWANI8-Room1 SCM820-Room1	(none)



The group channel count is determined by the access point (APT) model: 2, 4 or 8 channels.

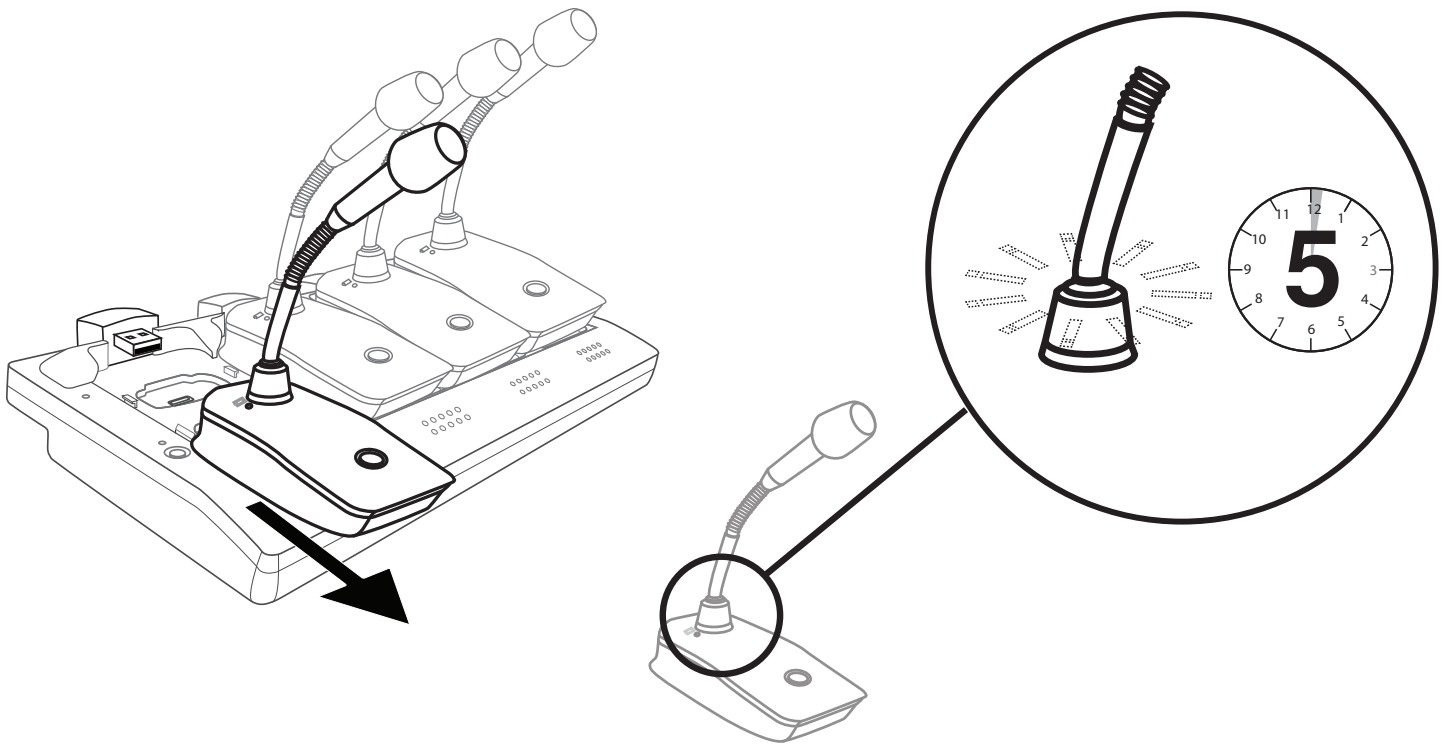
Link Microphones to the Group



using the hardware

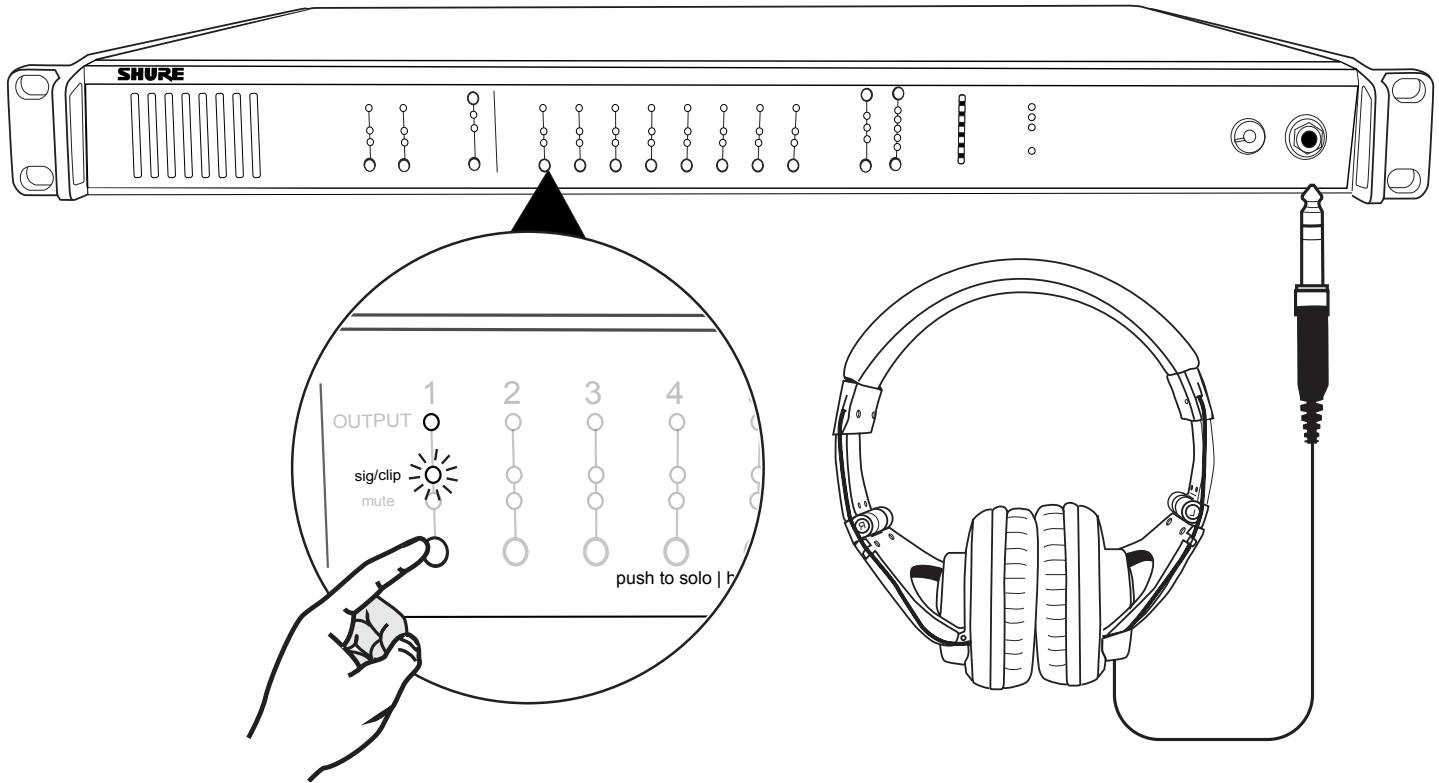
using the network

Remove the Microphones



Microphone LEDs stop flashing when it is ready to use.

Test the Audio



select the desired channel

use headphones

Safety Information

SAFETY PRECAUTIONS

The possible results of incorrect use are marked by one of the two symbols—"WARNING" and "CAUTION"—depending on the imminence of the danger and the severity of the damage.



WARNING: Ignoring these warnings may cause severe injury or death as a result of incorrect operation.



CAUTION: Ignoring these cautions may cause moderate injury or property damage as a result of incorrect operation.

WARNING

LISTENING TO AUDIO AT EXCESSIVE VOLUMES CAN CAUSE PERMANENT HEARING DAMAGE. USE AS LOW A VOLUME AS POSSIBLE.

Over exposure to excessive sound levels can damage your ears resulting in permanent noise-induced hearing loss (NIHL). Please use the following guidelines established by the Occupational Safety Health Administration (OSHA) on maximum time exposure to sound pressure levels before hearing damage occurs.

90 dB SPL at 8 hours	95 dB SPL at 4 hours	100 dB SPL at 2 hours	105 dB SPL at 1 hour
110 dB SPL at ½ hour	115 dB SPL at 15 minutes	120 dB SPL Avoid or damage may occur	

WARNING

- Battery packs may explode or release toxic materials. Risk of fire or burns. Do not open, crush, modify, disassemble, heat above 140°F (60°C), or incinerate.
- Follow instructions from manufacturer
- Only use Shure charger to recharge Shure rechargeable batteries
- **WARNING:** Danger of explosion if battery incorrectly replaced. Replace only with same or equivalent type.
- Never put batteries in mouth. If swallowed, contact your physician or local poison control center
- Do not short circuit; may cause burns or catch fire
- Do not charge or use battery packs other than Shure rechargeable batteries

- Dispose of battery packs properly. Check with local vendor for proper disposal of used battery packs.
- Batteries (battery pack or batteries installed) shall not be exposed to excessive heat such as sunshine, fire or the like

WARNING: Danger of explosion if incorrect battery replaced. Operate only with AA batteries.

Note: Use only with the included power supply or a Shure-approved equivalent.

1. 經審驗合格之射頻電信終端設備，非經許可，公司、商號或使用者均不得擅自變更頻率、加大功率或變更原設計之特性及功能。
2. 射頻電信終端設備之使用不得影響飛航安全及干擾合法通信；經發現有干擾現象時，應立即停用，並改善至無干擾時方得繼續使用。所謂合法通信，係指依電信法規定作業之無線電信。
3. 輸入、製造射頻電信終端設備之公司、商號或其使用者違反本辦法規定，擅自使用或變更無線電頻率、電功率者，除依電信法規定處罰外，國家通訊傳播委員會並得撤銷其審驗合格證明。
4. 減少電磁波影響，請妥適使用

MXW1

These transmitters have been tested and found to comply with international radiation exposure limits set forth for an uncontrolled environment. This equipment is in direct contact with the body of the user under normal operating conditions. These transmitters must not be co-located or operating in conjunction with any other antenna or transmitter.

MXW2, MXW6, MXW8, MXWAPT2, MXWAPT4, MXWAPT8

These mobile transmitters are intended for use at distances greater than 20 centimeters from the human body. These mobile transmitters are exempt from the testing requirements of international radiation exposure standards due to their proximity to the body of the user in their intended use case and their low power output. These mobile transmitters shall be placed or installed

at least 20 cm from any person and must not be co-located or operating in conjunction with any other antenna or transmitter.

Important Product Information

The equipment is intended to be used in professional audio applications.

EMC conformance testing is based on the use of supplied and recommended cable types. The use of other cable types may degrade EMC performance.

Changes or modifications not expressly approved by Shure Incorporated could void your authority to operate this equipment.

Please follow your regional recycling scheme for batteries, packaging, and electronic waste.

Note: This device is not intended to be connected directly to a public internet network.

Information to the user

This equipment has been tested and found to comply with the limits for a Class B digital device, pursuant to Part 15 of the FCC Rules. These limits are designed to provide reasonable protection against harmful interference in a residential installation. This equipment generates uses and can radiate radio frequency energy and, if not installed and used in accordance with the instructions, may cause harmful interference to radio communications. However, there is no guarantee that interference will not occur in a particular installation. If this equipment does cause harmful interference to radio or television reception, which can be determined by turning the equipment off and on, the user is encouraged to try to correct the interference by one or more of the following measures:

- Reorient or relocate the receiving antenna.
- Increase the separation between the equipment and the receiver.
- Connect the equipment to an outlet on a circuit different from that to which the receiver is connected.
- Consult the dealer or an experienced radio/TV technician for help.

Certifications

This device complies with FCC Part 15.

This device complies with Industry Canada licence-exempt RSS standard(s). Operation of this device is subject to the following two conditions: (1) this device may not cause interference, and (2) this device must accept any interference, including interference that may cause undesired operation of the device.

Le présent appareil est conforme aux CNR d'Industrie Canada applicables aux appareils radio exempts de licence. L'exploitation est autorisée aux deux conditions suivantes : (1) l'appareil ne doit pas produire de brouillage, et (2) l'utilisateur de l'appareil doit accepter tout brouillage radioélectrique subi, même si le brouillage est susceptible d'en compromettre le fonctionnement.

Japanese Radio Law and Japanese Telecommunications Business Law Compliance. This device is granted pursuant to the Japanese Radio Law (電波法) and the Japanese Telecommunications Business Law (電気通信事業法). This device should not be modified (otherwise the granted designation number will become invalid).

Conforms to electrical safety requirements based on IEC 60065.

Meets essential requirements of the following European Directives:

- WEEE Directive 2002/96/EC, as amended by 2008/34/EC
- RoHS Directive 2011/65/EU

Note: Please follow your regional recycling scheme for batteries and electronic waste

Hereby, Shure Incorporated declares that the radio equipment is in compliance with Directive 2014/53/EU. The full text of the EU declaration of conformity

is available at the following internet address: <http://www.shure.com/europe/compliance>

Authorized European representative:
Shure Europe GmbH
Headquarters Europe, Middle East & Africa
Department: EMEA Approval
Jakob-Dieffenbacher-Str. 12
75031 Eppingen, Germany
Phone: +49-7262-92 49 0
Fax: +49-7262-92 49 11 4
Email: EMEAsupport@shure.de

MXWNCS2, MXWNCS4, MXWNCS8

Authorized under the FCC verification provision per Part 15b.

Industry Canada ICES-003 Compliance Label: CAN ICES-3 (B)/NMB-3(B)

Note: See the label located on the bottom side of the charger enclosure for the FCC marking, the CE marking, the RCM marking, and the electrical ratings.

MXW1, MXW2, MXW6, MXW8, MXWAPT2, MXWAPT4, MXWAPT8

Certified under FCC Part 15.

FCC: DD4MXW1, DD4MXW2, DD4MXW6, DD4MXW8, DD4MXWAPT4, DD4MXWAPT8.

Meets applicable requirements of RSS-213.

IC: 616A-MXW1, 616A-MXW2, 616A-MXW6, 616A-MXW8, 616A-MXWAPT4,
616A-MXWAPT8.

Trademarks

Audinate®, the Audinate logo and Dante are trademarks of Audinate Pty Ltd.