

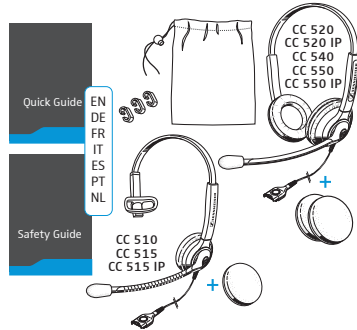
CC 510 | CC 515 | CC 515 IP
 CC 520 | CC 520 IP | CC 540
 CC 550 | CC 550 IP



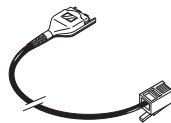
Quick Guide

SENNHEISER

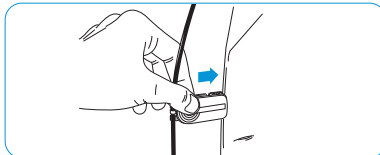
Delivery includes



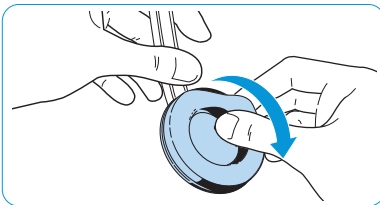
Accessories



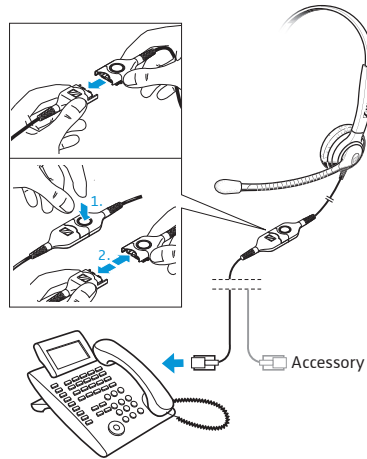
Using the cable clip



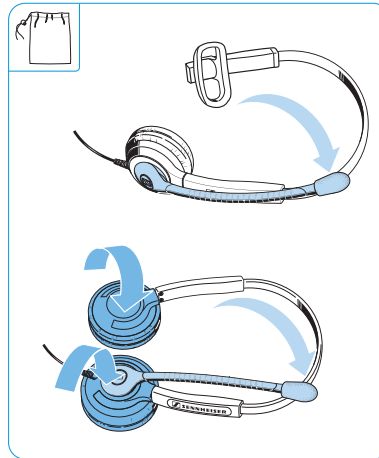
Replacing the ear pad



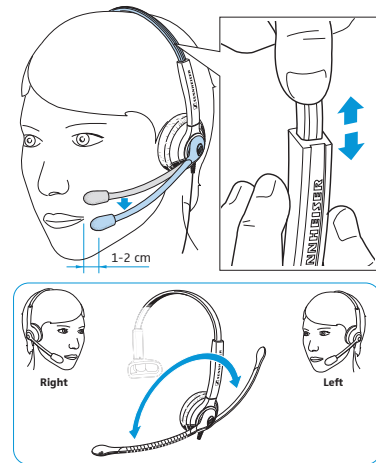
Connection possibilities



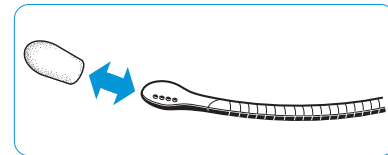
Transporting the headset



Wearing the headset



Using the popshield



CC series



Safety Guide

 **SENNHEISER**

Specifications

| | |
|------------------------|---|
| Operating temperature: | 0°C to + 40°C / 32°F to 104°F |
| Speakers | |
| - Frequency response: | 300 – 3,400 Hz (narrowband*) 150 – 6,800 Hz (wideband**) |
| Microphone | |
| - Pick-up pattern: | Ultra Noise Canceling |
| - Frequency response: | 300 – 3,400 Hz (narrowband*) 150 – 6,800 Hz (wideband**) |

EN

Safety instructions

- ▶ Read this safety guide carefully and completely before using the product.
- ▶ Always include this safety guide when passing the product on to third parties.
- ▶ Do not use an obviously defective product.

In order to prevent damage to health:

- ▶ Before using the product, set the volume to a low level. To protect your hearing, avoid listening at high volume levels for long periods of time.
- ▶ Do not use the product in situations which require special attention (e.g. in traffic or when performing skilled jobs).
- ▶ Keep plastic wrap and plastic bags of the packaging out of reach of children – danger of suffocation!
- ▶ Always maintain a distance of at least 3.94" (10 cm) between the ear cups and the cardiac pacemaker or implanted defibrillator since the product generates permanent magnetic fields.

In order to prevent damage to the product:

- ▶ Always keep the product dry and do not expose it to extreme temperatures (normal operating temperatures: +5°C/+41°F to +40°C/+104°F).
- ▶ Do not short-circuit the contacts of the product. Make sure that no metal objects (e.g. paper clips, hair pins, earrings) come into contact with the interfaces and contacts.
- ▶ Use the product with care and store it in a clean, dust-free environment.
- ▶ Only use attachments/accessories recommended by Sennheiser Communications.

Intended use

The monaural or binaural headsets are suitable for use in offices, home offices or call centers. It is considered improper use when the products are used:

- for any application not named in this safety guide and in the quick guide,
- under operating conditions that deviate from those described in this safety guide and in the quick guide.

Manufacturer Declarations

Warranty

Sennheiser Communications A/S gives a warranty of 24 months on this product.

In compliance with the following requirements:

- WEEE Directive (2012/19/EU)
Please dispose of this product by taking it to your local collection point or recycling center for such equipment. This will help to protect the environment in which we all live.



CE Conformity

- RoHS Directive (2011/65/EU)



CC series: *narrowband: CC 510, CC 515, CC 520, CC 530, CC 540, CC 550 | **wideband: CC 515 IP, CC 520 IP, CC 550 IP

In compliance with:

| | |
|--------|---|
| Europe |   |
| China |  |

Sennheiser product warranty FOR AUSTRALIA ONLY

Sennheiser's goods come with guarantees that cannot be excluded under the Australian Consumer Law. You are entitled to a replacement or refund for a major failure and compensation for any other reasonably foreseeable loss or damage. You are also entitled to have the goods repaired or replaced if the goods fail to be of acceptable quality and the failure does not amount to a major failure.

This warranty is in addition to other rights or remedies under law. Nothing in this warranty excludes, limits or modifies any liability of Sennheiser which is imposed by law, or limits or modifies any remedy available to the consumer which is granted by law.

All expenses of claiming the warranty will be borne by the person making the claim.

Shop for other office equipment & supplies on our website.