

NUFORCE MSR-1

Music Server Sonata Edition



- A. FCC Notice “Declaration of Conformity Information” 3
- B. Safety Instructions 3
- C. Overview..... 6
- D. Getting Started 7
- E. Audio..... 8
 - Overview..... 8
 - Play Music 16
 - Playlist 21
- F. Tags..... 33
- G. Search..... 41
- H. Installation 44
- I. APPENDIX A..... 50
 - 1. Touch Screen Calibration 50
 - 2. Display/TV..... 52
 - 3. iSonata Remote Control..... 52
 - 4. WiFi 53
 - 5. Import Music..... 54
 - 6. Backup 56
 - 7. Language..... 57
 - 8. Main Menu..... 58
- TERMS AND CONDITIONS OF SALE 60
- Nuforce One Year (Two Year Parts) Limited Warranty 62

A. FCC Notice “Declaration of Conformity Information”

This equipment has been tested and found to comply with the limits for a Class B digital device, pursuant to part 15 of the FCC Rules. These limits are designed to provide reasonable protection against harmful interference in a residential installation. This equipment uses and can radiate radio frequency energy and, if not installed and used in accordance with the instructions, may cause harmful interference to radio communications.

However, there is no guarantee that interference will not occur in a particular installation. If this equipment does cause harmful interference to radio or television reception, which can be determined by turning the equipment off and on, the user is encouraged to try to correct the interference by one or more of the following measures:

- Reorient or relocate the receiving antenna. Locate the antenna more than 30 feet away from the equipment and connect it to the receiver using a shield cable.
- Increase the separation between the equipment and receiver.
- Connect the equipment into an outlet on a circuit different from that to which the receiver is connected.
- Consult the dealer or an experienced radio/TV technician for help.

WARNING: Only peripherals complying with the FCC class B limits may be attached to this equipment.

Changes or modifications made to this equipment, not expressly approved by us or parties authorized by us could void the user’s authority to operate the equipment. This device complies with part 15 of the FCC Rules. Operation is subject to the following two conditions: (1) This device may not cause harmful interference, and (2) this device must accept any interference received, including interference that may cause undesired operation.

B. Safety Instructions

There are two categories of Safety Instructions included in this manual:

- Product Warnings, (i.e., what must never be done to assure avoiding those hazards that could cause bodily injury or property damage); and
- User Directions (i.e., what must always be done to assure the safe use of your device).

The Safety Instructions contained in this manual have been categorized in accordance with the seriousness of the potential hazards through the use of Signal Words. Those Signal Words, and their intended meanings, are as follows:

DANGER: Indicates that a failure to observe the Safety Instructions could result in death or catastrophic bodily injury.

WARNING: Indicates that a failure to observe the Safety Instructions could result in serious bodily injury.

CAUTION: Indicates that a failure to observe the Safety Instructions could result in minor bodily injury or property damage.

NOTE: Designates important information that relates to activities and/or conditions that might result in loss of data and/or damage to your device.

Safe Use and Operation of Your Device

This equipment emits stray RF energy and will interfere with the reception of signals by airborne electronic navigational devices or medical devices. Do not operate this equipment near any sensitive medical devices.

WARNING: Use only grounded AC power cords.

DANGER: If NuForce equipment and all other equipments connected to it do not have AC ground, higher than usual amount of radio frequency emission could occur.

Always immediately disconnect the power to the equipment in the event the device emits an unusual odor or sound or generates smoke.

WARNING: Never attempt to disassemble, repair or make any modification to your device. Disassembly, modification or any attempt at repair could cause bodily injury or property damage, as well as damage to the device itself.

WARNING: Your device is not a toy. Never allow children to play with your device. Misuse, rough or improper handling of your device by children could result in serious bodily injury for any of the enumerated safety warnings in this manual. In addition, always keep all accessories and components out of the reach of small children as small parts might present a choking hazard. Seek immediate medical attention if choking occurs or if any small part has been swallowed.

CAUTION: Never raise the sound volume level too high when using your device with earphones. An excessive sound volume level could cause damage to your hearing.

WARNING: To reduce the risk of fire or electric shock, do not expose the unit to moisture or water.

Do not allow foreign objects to get into the enclosure. If the unit is exposed to moisture, or a foreign object gets into the enclosure, immediately disconnect the power cord from the wall. Take the unit to a qualified service person for inspection and necessary repairs.

Read all the instructions before connecting or operating the component.

Keep this manual so you can refer to these safety instructions.

Heed all warnings and safety information in these instructions and on the product itself. Follow all operating instructions.

Do not use this unit near water.

You must allow a minimum 10 cm or 4 inches of unobstructed clearance around the unit. Do not place the unit on a bed, sofa, rug, or similar surface that could block the ventilation openings. If the unit is placed in a bookcase or cabinet, there must be ventilation of the cabinet to allow proper cooling. Keep the component away from radiators, heat registers, stoves, or any other appliance that produces heat.

The unit must be connected to a power supply only of the type and voltage specified on the rear panel.

Connect the component to the power outlet only with the supplied power supply cable or an exact equivalent. Do not modify the supplied cable.

Do not route the power cord where it will be crushed, pinched, bent, exposed to heat, or damaged in any way. Pay particular attention to the power cord at the plug and where the cord exits the back of the unit.

The power cord should be unplugged from the wall outlet during a lightning storm or if the unit is to be left unused for a long period of time.

Immediately stop using the component and have it inspected and/or serviced by a qualified service agency if:

- The power supply cord or plug has been damaged.
- Objects have fallen or liquid has been spilled into the unit.
- The unit has been exposed to rain.
- The unit shows signs of improper operation
- The unit has been dropped or damaged in any way

Instructions for Use:

To operate your **NuForce MSR-1** properly and to keep your music secure, please read these instructions carefully:

- This device has been designed to store and reproduce music. It should not be used for any other purpose.
- Place in a dry, well ventilated environment. Avoid excessive heat, vibration and dust.
- Do not use your **Music Server** near water.
- Avoid sudden temperature changes that can create moisture by condensation.
- Do not cover the ventilation slots.
- Protect the power wire so that it cannot be stepped on or otherwise damaged.
- Do not apply force to the controls or wires.
- Unplug the **Music Server** if it's not going to be used for a long period of time.
- Disconnect the **Music Server** during electrical storms. Simply turning off electronic equipment may not protect it adequately if your building or a nearby area are hit by lightning.
- Before moving the **Music Server**, turn it off and disconnect.
- For cleaning, disconnect and use a dry duster. Never use aerosols, chemical or abrasive products.
- Do not try to open. In case of an accident or malfunction, request authorized help.
- Any modification done without expressed authorization will cancel the guarantee.
- When available, software and maintenance updates can be installed by remote-control connection.

C. Overview

The consumer does not require special computer skills in order to use the **NuForce MSR-1 Sonata Music Server**. All you have to do is to connect the power cord to a 110/230V outlet and, if you want an Internet connection, the LAN wire or WiFi USB (optional) to the MSR-1. An Internet connection is necessary only if you want to make private copies of your music CDs. The Internet connection will provide cover art, artists, track names, and other information relating to your disc.

About a minute after the **MSR-1** is switched on, the initial screen will show several options:

The first option, **Audio**, allows you to play back the stored music. The system comes supplied with a few songs to practice with.

The second option, **Search**, allows you to search your music libraries by fields such as album title, artist, composer, song, etc. The **Classical Database** allows you to search by orchestra, conductor, soloist, etc.

The third option, **Playlists**, allows you to access the server's existing **Playlists** and to create new ones via the **Playing** and **Save As** buttons.

The fourth (default) option changes the working mode to **Play CD Mode**. This allows you to listen to CDs inserted in the tray as with any conventional CD player.

The fifth option selects the **Private CD Ripping Mode**. In this mode, a CD is inserted in the front panel tray and ripped into the system's hard disk, thus adding it to the **Audio Menu**. The system will connect to the Internet to obtain disc data. *If it cannot find the relevant data or if an Internet connection isn't available, the disc will be ejected.* If, immediately after ejection, you insert it again, it will be ripped and added to **Audio**. The CD's data will appear as **Unknown**. The tracks will be identified as Track 1, Track 2, etc. You can enter your own data with the provided editing tools.

The sixth option, **Settings**, allows you to select your system's settings along with performing special tasks such as creating a hard-disk backup and other options.

The seventh and last option, **Shutdown**, switches off the system.

D. Getting Started

The **NuForce Music Server MSR-1** is a sound system designed to store music in different digital formats. Its basic functions are:

- Playing music stored in the unit in a digital format. The **Music Library** is accessed via the **Audio Menu**.
- Adding new CDs to the **Music Library**. This operation is called CD ripping.
- Playing a CD.

When the system is switched on, after having gone through program and configuration loading messages, the main screen, called **Home**, appears:



Use and control of the system can be accomplished in two ways:

- Through the **Touch Screen**.
- With the standard remote control (for TV or VGA monitor), or with the (iPhone/iPod Touch) **iSonata**'s optional software.

To operate the **Music Server**, it is necessary to acquire at least one of these control systems. It is possible to use both simultaneously. You will need only to touch the **Touch Screen** to execute a function. With the

remote control, you use the direction arrows (up, down, left, right) to highlight the selected option in red or blue. You then make your choice by pushing the **OK** button.

To repeat, you can use the **Music Server** with either or both control systems. Those few instances in which there's a difference will be expressly indicated.

The **Home** screen's **Main Menu** options:

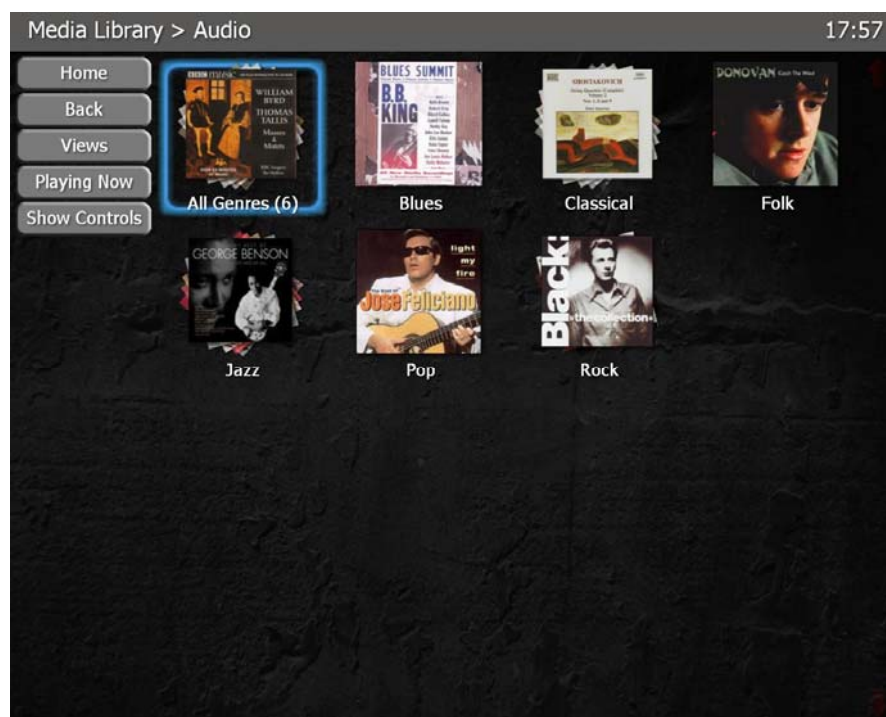
- **Audio.** Allows you to access all the music playback functions.
- **Search.** Allows you to search by genre, artist, album, title, song, composer, orchestra, conductor or soloist.
- **Playlist.** Allows you to select music collections you have previously defined or are automatically generated by the system.
- **Play CD.** Allows you to play a CD inserted in the CD tray.
- **Rip CD.** Allows you to add CDs in the CD tray to the Music Library. **Note: This is the default position when the system is switched on.**
- **Settings.** Allows you to set up the system according to your preferences or via other special features.
- **Shutdown.** Switches off the system.

E. Audio

Overview

To access the **Audio** option from the **Home Menu**, touch the screen's **Audio** button text or select by highlighting it via the remote control and pressing **OK**.

A screen like this appears:



The **Sub-Menu** appears in the upper part of the screen, where you will see **Home>Audio** and the time.

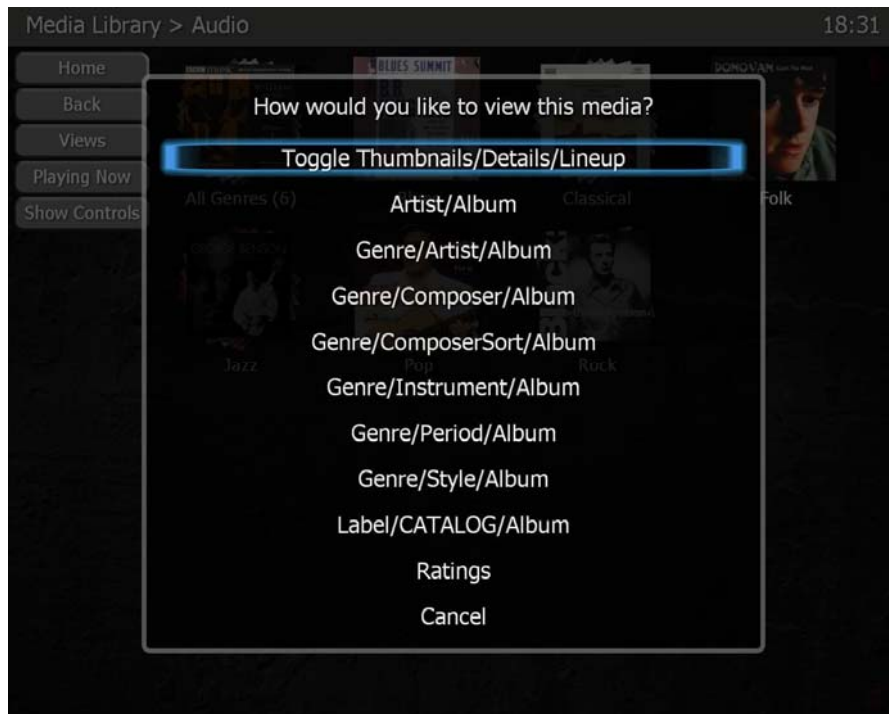
You will also see the **Music Library**, classified by genres. The first image, **All Genres (6)**, indicates available genres.

At the left of the screen you will see these options:

- **Home.** Goes back to the **Main Menu**.
- **Back.** Goes back to the previous screen.
- **Views.** Changes the presentation mode (skin browser).
- **Playing Now.** Shows the **Playlist** being played.
- **Show Controls.** Shows playback controls. The options include **Play/Pause**, **Stop** (reproduction), **Previous** (track), **Next** (track), **Reshuffle** (Playlist), **Volume Up**, **Volume Down** and **Advanced** (other ways of visualization).

The **Views** option determines the following forms of visualization. The installer can customize these **View** options at the customer's request. The options can comprise any combination of the **Classical Music Category's** 14 fields, thus enabling easy, precisely focused access.

If this option is selected by **Touch Screen** or remote control, this screen appears:



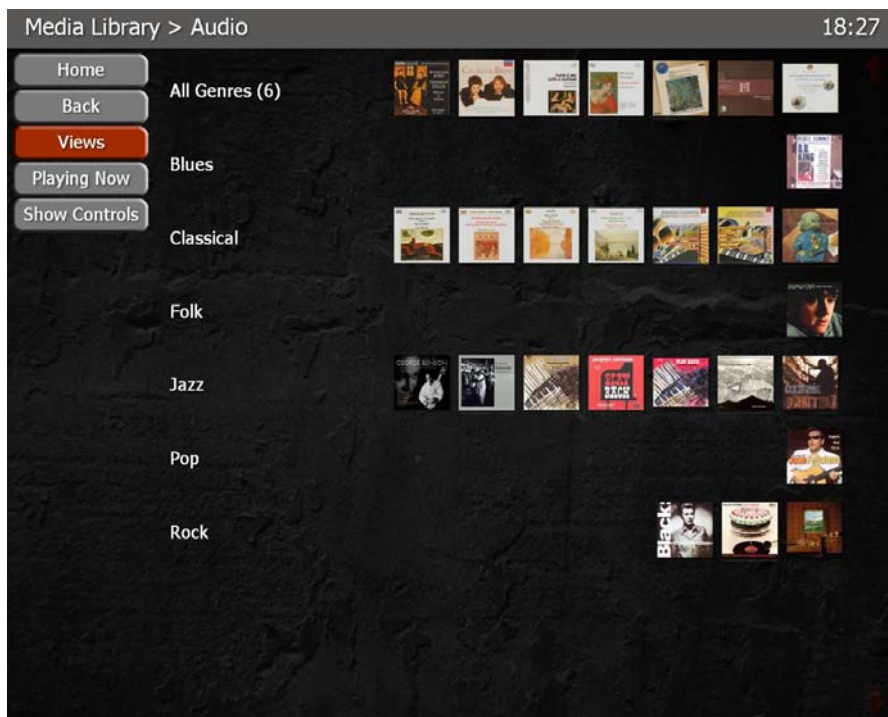
The first option, highlighted in blue, allows you to change the size of the previous screen's images from small to medium or large. This is a sequential option. The first time it is executed it will present the image as small, the second time as medium, and the third time as large.



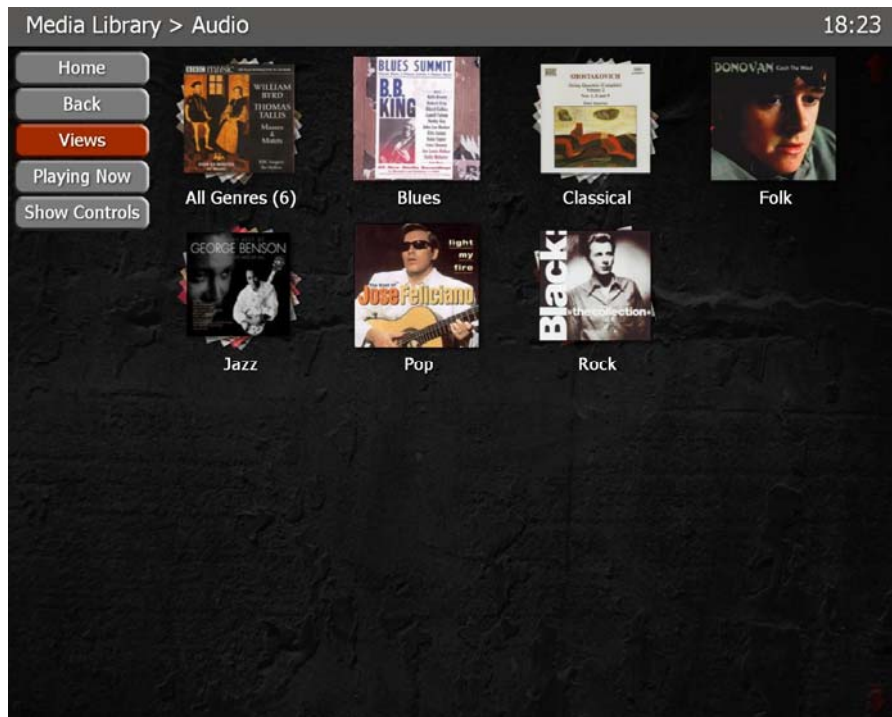
The Genre Screen's Lineup:



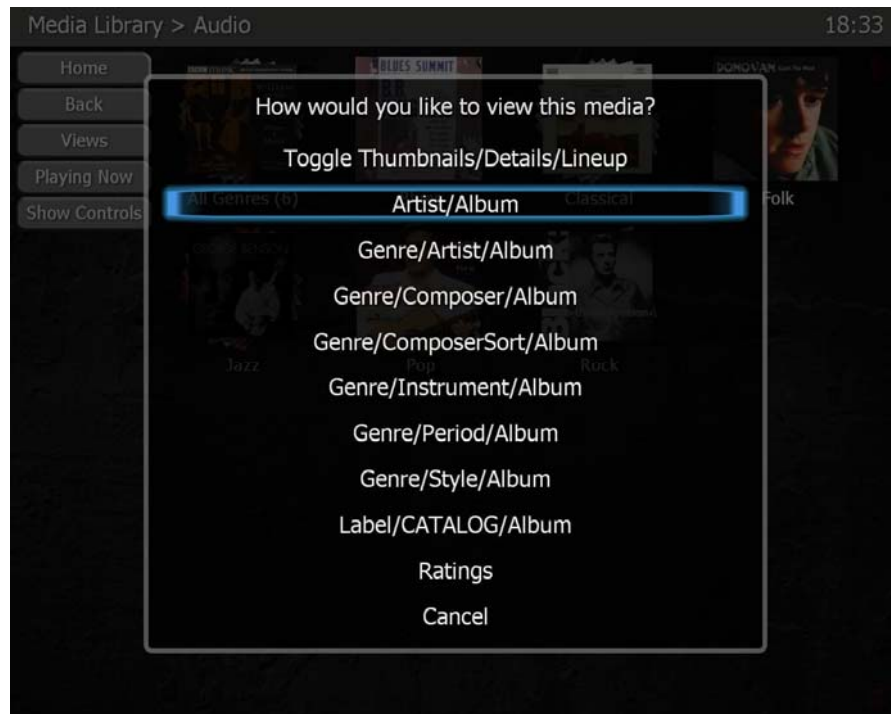
View Thumbnails:



View Details:

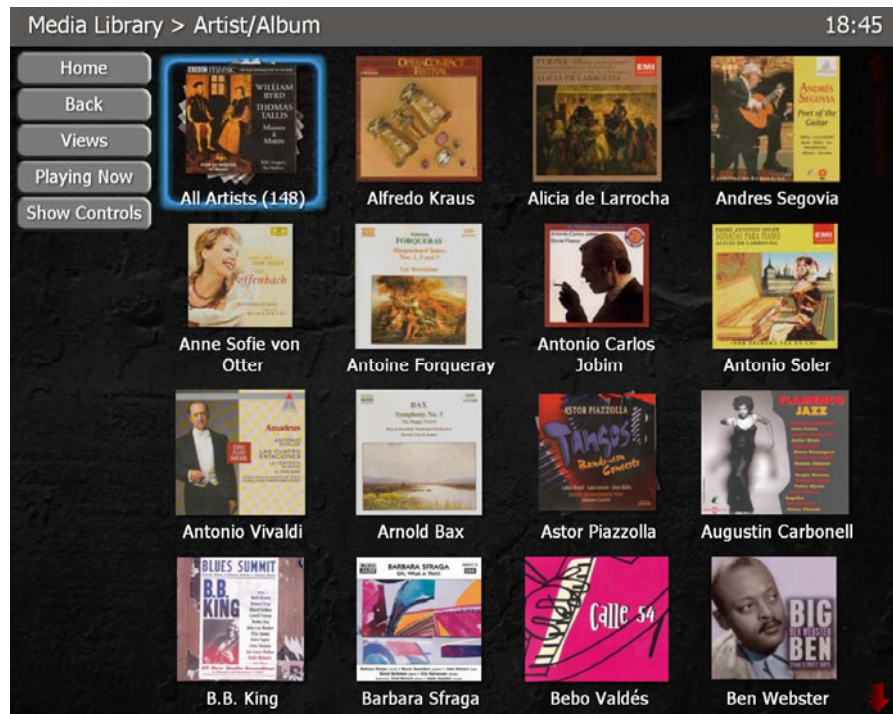


If you return to the **Views** option, you will see the second option (**Artist/Album**) as well as the third (**Genre/Artist/Album**):



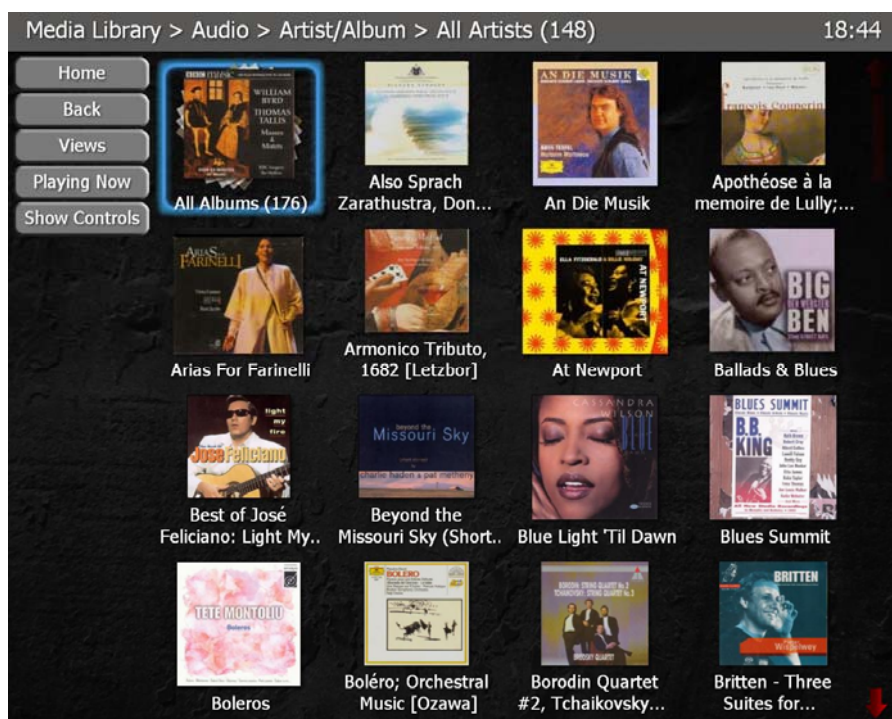
The **Artist/Album** option allows you to sort by artists in alphabetical order. The **Classical** option defines categories as in this example: In an album in which a pianist performs music by several composers, the **Artist** will be the pianist and the composers will appear in the **Composer** field. If the pianist performs works by one composer, the **Artist** will be the composer, and the pianist will be the **Soloist** or **Performer**.

The screen looks like this:



The first image, **All Artists (148)**, indicates that there are 148 artists. Since the number of artists exceeds the screen's capacity, you can see other album covers by touching the arrows on the right side of the screen or by using the remote control's arrows.

If the **Artist/Album** screen is touched at the **All Artists (148)** image or is selected with the remote control, the albums in which these 148 artists are included appear:



All albums are presented in alphabetical order by album name.

To return to **Artist View**, press **Back**.

The third option, **Genre/Artist/Album**, allows you to return to classification by genre.

Except for ratings, the other **Views** that appear in the **Views** screen are primarily intended for **Classical Music**.

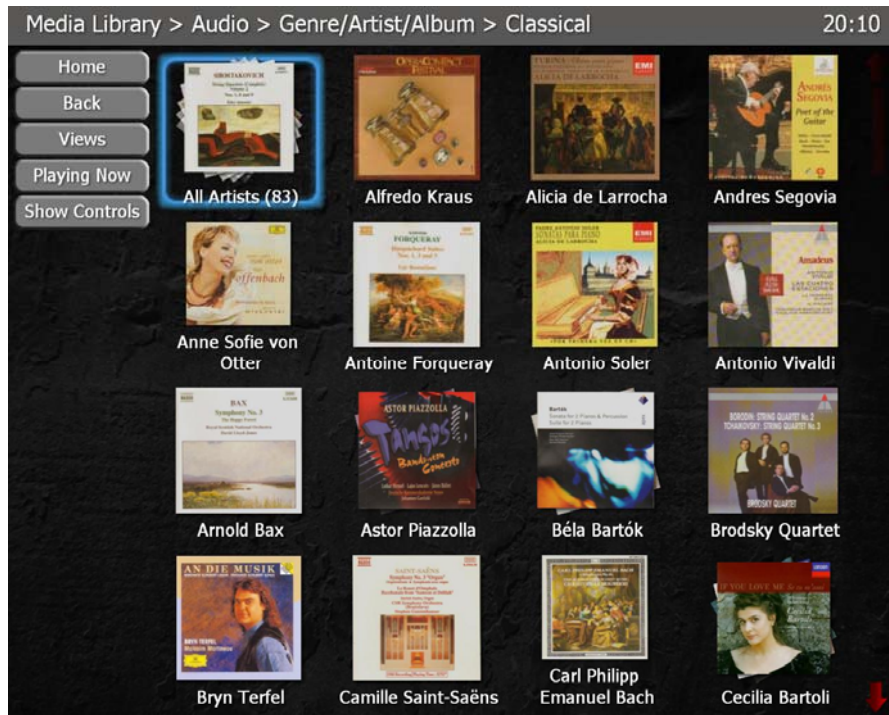
The following **Views** have been configured for **Classical Music**:

- Composer/Album (Sorted by the composer's first name)
- ComposerSort/Album (Sorted by the composer's last name)
- Instrument/Album
- Period/Album
- Style/Album
- Orchestra/Album
- Soloist/Album
- Conductor/Composer/Album
- Period/Composer/Album
- Instrument/Period/Album
- Style/Composer/Instrument/Album
- Label/Catalog Number/Album

Note: The installer can further customize these configurations.

Play Music

Going back to **View by Genre/Artist/Album**, and touching the screen at the **Classical** genre, this screen appears:



The upper bar indicates the current **Sub-Menu Audio>Genre/Artist/Album>Classical**. The first image indicates that there are 83 Artists in the **Classical** genre. Touch the screen on **All Artist (83)** and the albums corresponding to these 83 artists appear. For example, touch the screen on **Béla Bartók** and this is what appears:



There are two albums for this composer. By selecting **Sonata For 2 Pianos & ...** the following screen appears:



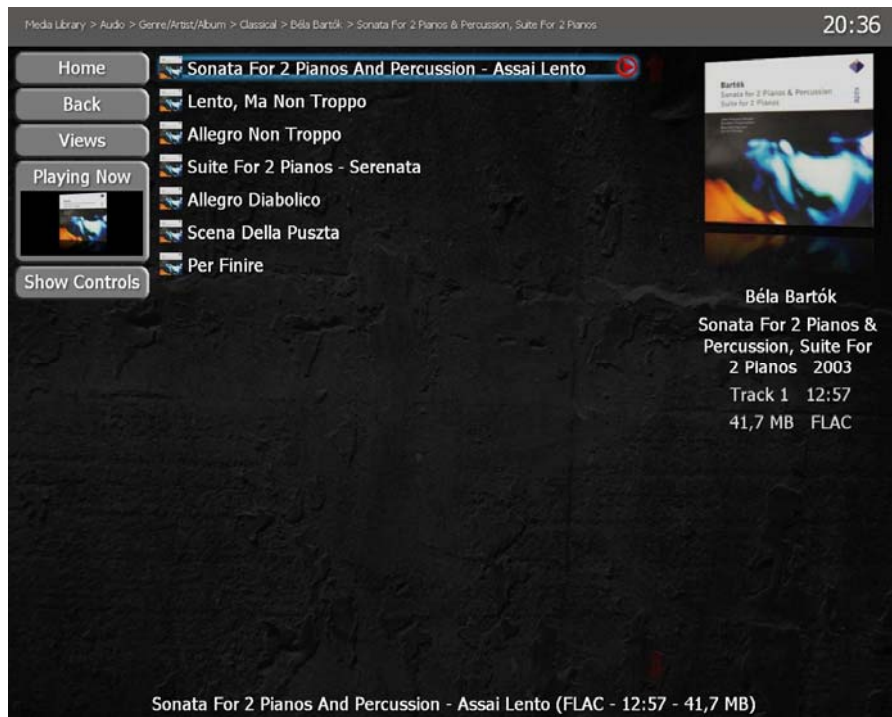
A highlighted down arrow at the screen's left side indicates that there are more tracks than screen space permits. Touch the first track. Beneath it you will see the following **Menu**:



- **Play** (variable). Plays the selected track.
- **Play All**. Plays the entire album.
- **More Play Options**. Allows you to select other options.
- **Select**. Allows you to select tracks to be played.
- **Tag**. Allows you to change the album's **Tag** entry names.
- **Cancel**. Cancels the selection.

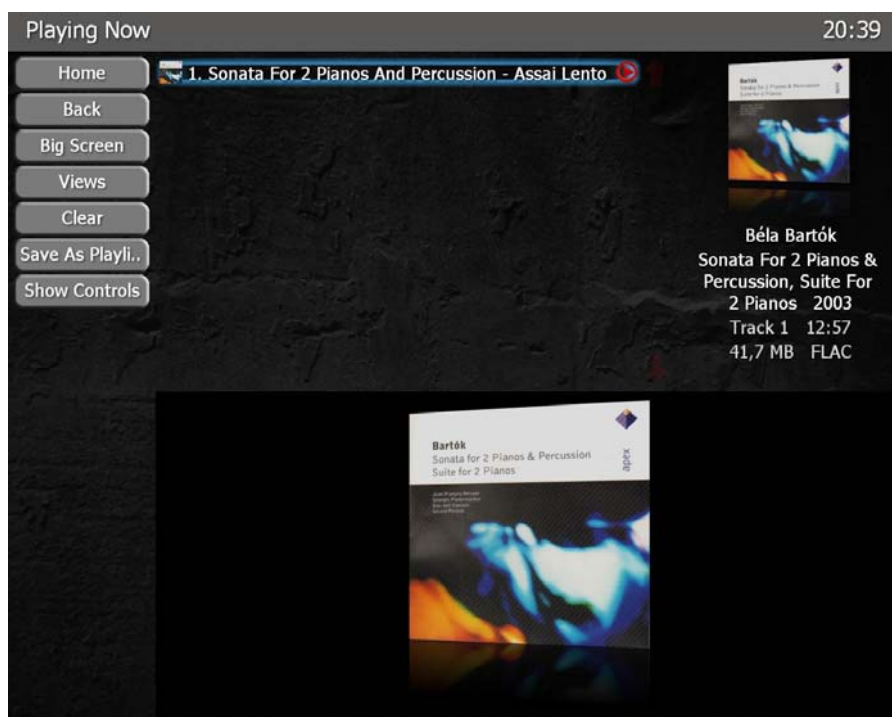
The last four options are always the same, whereas the first two will depend on the previous action.

Touch **Play** on the screen or press **OK** on the remote control, and this screen appears:



The music should have started to play. The first track has a red triangle at the right indicating that this is the track being played. The **Playing Now** option at the left side includes the album's cover art.

If the **Playing Now** text is touched, the screen shows what's being played:



Some changes have occurred. The upper bar says **Home>Playing Now**, with new options:

- **Big screen.** Allows you to see the cover art in large size.
- **Clear.** Clears the content of the **Playlist**.
- **Save As Playlist.** Saves the contents of the **Playlist**.

Touch **Big Screen** and you will see the cover art in full size. If you touch the upper part of the screen you'll see a playing bar that provides CD information (not shown here):



To exit **Big Screen**, touch the centre of the screen twice or press the remote control's **Back** or ← button.

Every time one or more tracks are played, the system automatically creates a **Playlist**. It is for this **Playlist** that **Clear** and **Save As Playlist** exist. **Clear** eliminates information from the **Playlist** and **Save As Playlist** saves it.

Playlist

Touch the **Back** option to return to the screen that lists the tracks:



Touch this screen's third track, for example, and a similar screen to the one seen previously appears, but now with the **Sub-Menu** displayed under the third track:



As mentioned previously, simply by playing music you create a **Playlist**. To put new tracks in the **Playlist** use the **Select** option that appears in this **Menu**, thus allowing for the addition of only certain tracks. Other methods for putting tracks in a **Playlist** are included in the **More Play Options**, for example, the **Add** option and its variants. Let's practice by putting tracks in a **Playlist** using **More Play Options**, leaving an explanation of **Select** for later.

Touch now on the **More Play Options** and you will see the available options for each track:



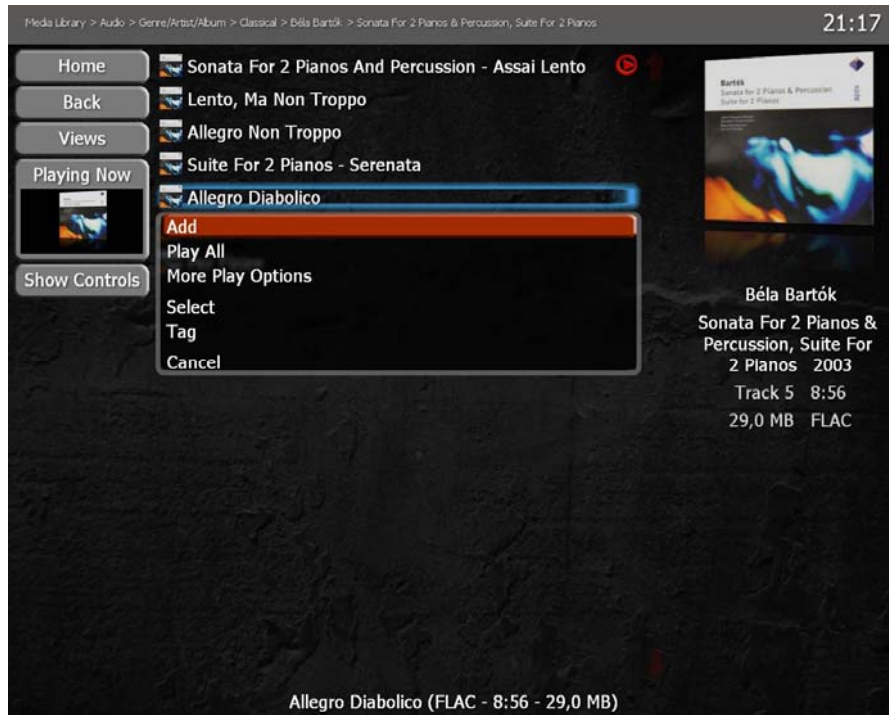
Two categories of options appear: **Play** and **Add**. **Play** and **Add** differ in that **Play** replaces the current **Playing Now** list whereas **Add** retains the current list while adding the new item.

- **Play All**. Removes tracks from the current **Playlist** and replaces them with the album's tracks, playing them in order.
- **Play**. Removes all tracks from the current **Playlist** and replaces them with the selected track which then plays.
- **Play (shuffled)**. Removes the tracks from the current **Playlist** and replaces them with the tracks from the album randomly played.
- **Play (as radio)**. Removes the tracks from the current **Playlist** and starts to play the selected track. After playing the selected track, this option randomly plays all tracks from the Music Library.
- **Add**. Adds the selected track at the end of the current **Playlist**.

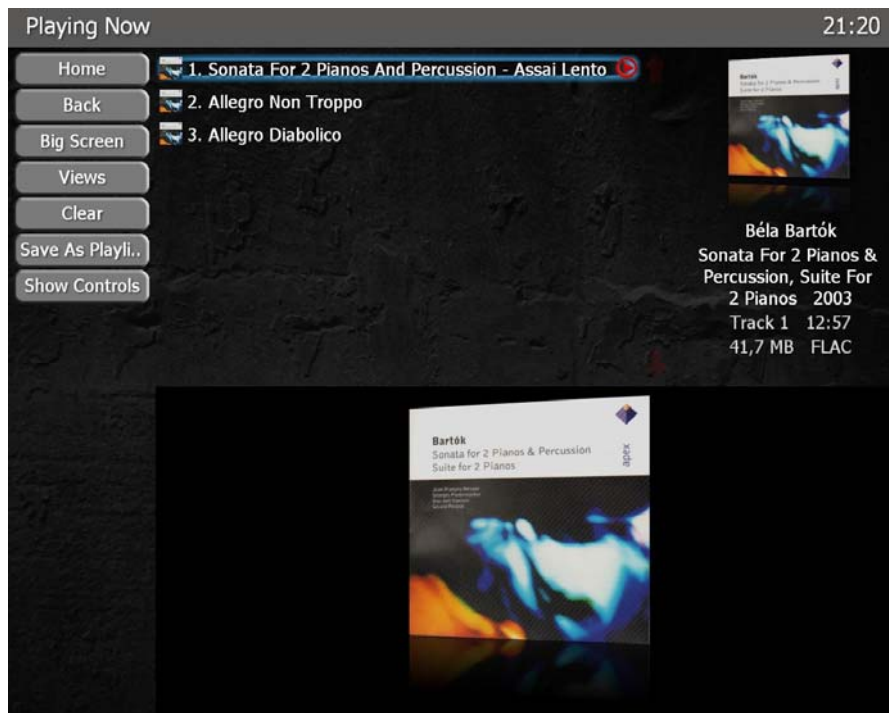
- **Add (as next to play).** Adds the selected track after the one being played at the moment.
- **Add (play now).** Stops the track being played and replaces it with the newly added track.
- **Add (shuffled).** This option adds the selected tracks in random order at the end of the current **Playlist**, continuing with its normal routine. If the **Playlist** is not being played, this option adds the selected tracks in random order at the end of the **Playlist** and starts to play one of the new tracks selected at random.
- **Add (shuffle all).** As the **Playlist** is being played, this option adds the selected tracks in random order within the **Playlist**, which continues its normal routine. If the list is not being played, this option adds the selected tracks in random order within the **Playlist** and begins play with one of these newly added, randomly selected tracks.
- **Add (shuffle remaining).** As the **Playlist** is being played, this option adds the selected tracks in random order within the tracks that remain to be played, continuing with the **Playlist's** current routine. If the **Playlist** is not being played, this option adds the selected tracks in random order within the list and starts to play one of the newly added tracks selected at random. (This second feature is the same as the **Shuffle All** option's second feature.)
- **Add (to beginning).** Adds the selected track at the beginning of the current **Playlist**.
- **Remove from Playing Now.** Removes the track from the **Playlist**.
- **Delete.** Removes the track from the album. If you choose this option the system will ask for confirmation by way of these options:
 - **Cancel.** Cancels the **Delete** order.
 - **Remove from Library.** Removes the track from the **Music Library**.
 - **Recycle File.** Removes the track from the **Music Library** and transfers it to an inaccessible place. The file is not erased. However, if at some later point you decide to retrieve it, external support will be necessary.
 - **Delete File.** Erases the track from the system. If you want the track at a later time, it will have to be re-recorded.

Note: The system saves the last performed action, placing it at the top of the Menu so that it can be repeated in following instances.

Inside **More Play Options' Sub-Menu** select the **Add** option and the third track will be added to the **Playlist**. Now touch the fifth track or select it via the remote control and press **OK**. In the **Menu** that follows, the first option has changed to **Add**, the last performed action:



Touch on **Add** and the fifth track will be added to the **Playlist**. By selecting **Playing Now** you can see the current **Playlist**'s three tracks:



By pressing **Back** it is possible to keep adding tracks from this album to the **Playlist** by following the procedure previously explained. By pressing **Back** again it is possible to select a new album and add tracks from it.

The **Select** option provides another useful way to add tracks to the **Playlist** when you intend to add only a few tracks from an album.

Go back to the **Classical Music Library** by pressing **Back** successively, and select another album:



Touch on the fourth track and the **Sub-Menu** appears:



Now touch **Select**:



A mark appears to the right of the fourth track indicating that this is the selected track. Selecting differences depends on whether it's done by the **Touch Screen** or remote control.

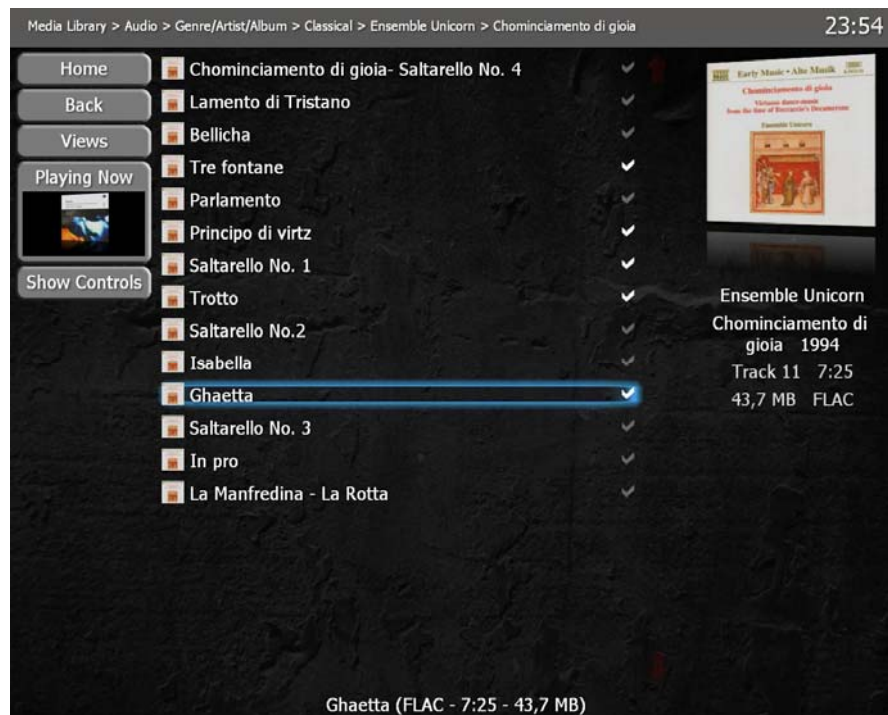
With the Touch Screen:

Simply touch tracks you want to select. If you touch again on a just-selected track, it is no longer selected. The selected tracks will remain marked.

With the remote control:

Select the track and press **OK**. A **Text Box** will pop up in which you choose **Select**. The track will be selected and marked. You can select new tracks with the remote control's arrows and press **OK**. The first option will be **Select**. To defeat a selection, choose **Deselect** in the **Text Box**.

After selecting tracks by any these means, the screen looks like this:



Now you can add the selected tracks to the **Playlist** along with its variants, if there are any. As before, the method of adding them depends on the control.

With the Touch Screen:

Touch the screen on one of the selected tracks, **keeping your finger on the screen for about a second**. If you remove your finger too quickly, the track is deselected. You will see that the **Text Box** on the **Touch Screen** shows the **Add** option. If you do not see it in the **Text Box**, go to the **More Play Options** to look for the **Add** option. The tracks will be added to the **Playlist**.

With the remote control:

Using the arrows, move to any of the selected tracks and press **OK**. A **Text Box** will appear. Select the **Add** option. If the **Add** option does not appear in the **Text Box**, go to the **More Play Options** and select it from there. The tracks will be added to the **Playlist**.

In both situations the **Text Box** is as it follows:

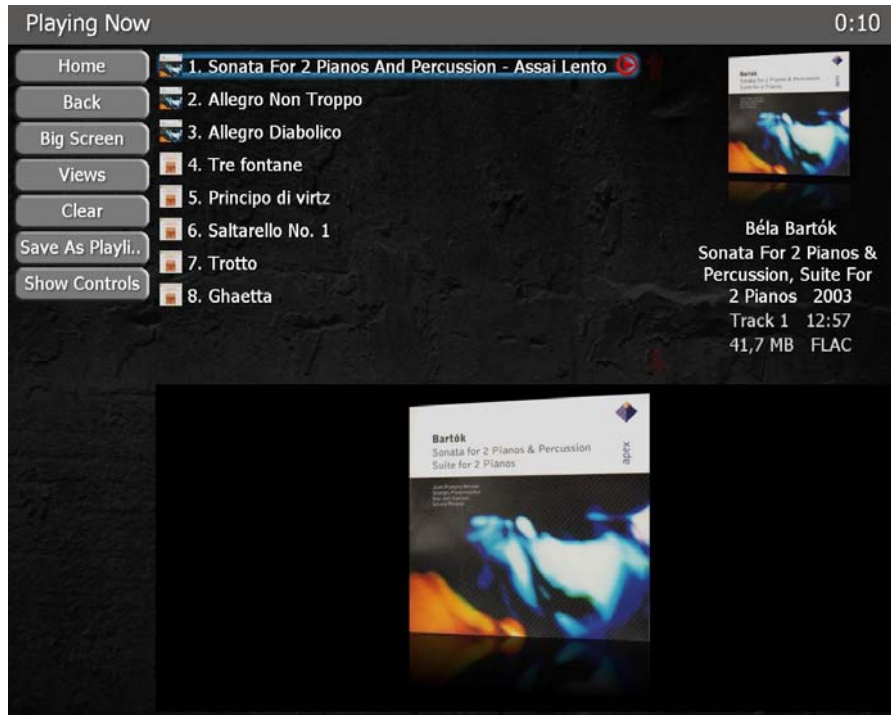


It is possible to add whole albums, with any of their variants, to the **Playlist**.

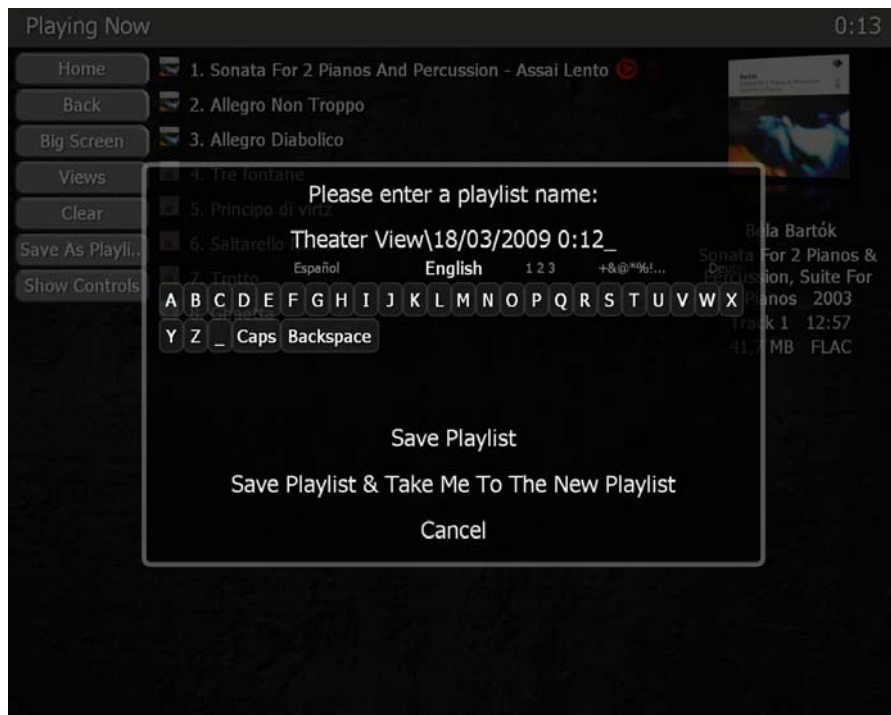
Go to the album's screen with any of its **Views**, and place your finger on the desired album. If you're using the remote control, press **OK** and select **Add** in the **Text Box**. If you're using the **Touch Screen**, keep your finger on the album until the **Text Box** appears. All the album's tracks will be added.

Saving a Playlist:

Touch the **Playing Now** option to see the content of the current **Playlist**. It will appear as a screen similar to this one. (It will differ depending on the selected tracks or albums.)



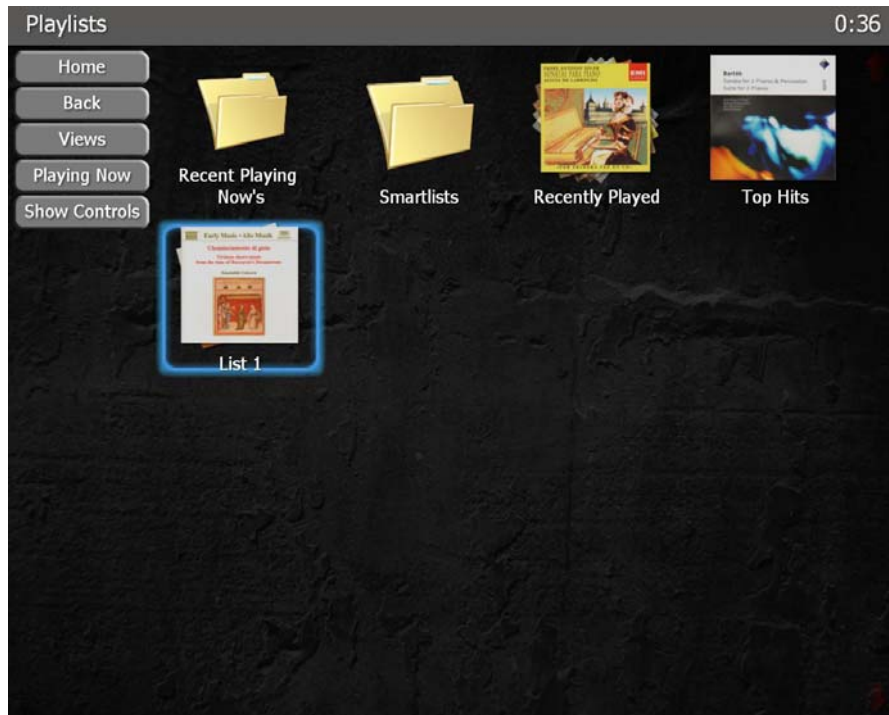
If you don't want to keep the recently created **Playlist**, touch **Clear** and it will be erased. If you want to save the **Playlist** for future listening, select the **Save As Playlist** option, and this **Text Box** appears:



If you select the **Save As Playlist** option it is saved as **Theatre View date and time**. If you press **Backspace** on the onscreen keyboard, it deletes the default name. Using this keyboard, you can give the **Playlist** a new name.

For example, rename the **Playlist** as **List 1**. Now select **Save Playlist** and you will be able to save it as **List 1** or the title of your choice.

To find the created **Playlist**, go back to the **Home Menu** and touch **Playlist**. The screen will present several **Playlists** the system created by default as well as the user-created **List 1**:



To play **List 1** touch the screen or press the remote control's **OK** button and select **Play All** in the first track:



Eliminating a Playlist:

Touch the **Delete Playlist** button on the left side of the **Menu** as you are playing the **Playlist**.

F. Tags

Normally, audio CDs don't come with embedded information such as names, titles, artists or other relevant data. This information is usually available in several online databases to which the **MSR-1** has access via Internet connection.

Information fields are called **Tags**.

Available **Tags** in different databases are normally given as:

Album (album name)
Artist (album artist's name)
Genre (musical style: pop, classical, jazz, etc.)
Date or Year (CD's publication year)

These **Tags** are usually common to all the album's tracks.

They also include:

Name or Title (track name)
Track # (the album's track number)
Rating (assigns a rating from 1 to 5 to each track)

Some databases can include other fields, such as the music's **Composer**, which can be different for each track, or **Catalogue Number**.

Because this common **Tag** structure does not meet classical music's requirements, we have created a database for the **MSR-1** that includes high-resolution CD cover art and a number of classical-specific **Tags**.

Period (Ancient, Renaissance, Baroque, Classical, Romantic, Modern and Contemporary)
Style (ballet, chamber, choral, concerto, incidental, Lieder, marching band, opera, operetta, recital, soundtrack, symphonic and zarzuela)
Instrument (brass, cello, choral, guitar, harpsichord, organ, percussion, piano, strings, violin, vocal and woodwind)
Composer (sorted by the composer's first name)
ComposerSort (sorted by the composer's last name)
Soloists (sorted by the soloist's first name)
SoloistsSort (sorted by the soloist's last name)
Conductor (ensemble's conductor)
Orchestra (ensemble's name)
Label (album's publisher)
Catalog # (album's catalog number)
Custom (free designation field)

When inserting a CD for ripping, using the **Rip CD** option, the system will connect itself to 5 different databases from the Internet, one of which is our exclusive classical-music database. An exclusive feature

we call **Perfect Metadata** selects the data that best suits the inserted CD. The user can modify the obtained data at any time if it isn't wanted or if a specific piece of information is unavailable.

How to modify label information:

Tag editing:

It is possible to change a label from a single track to all of one album's tracks or to all albums' tracks.

Track selection:

Touch any track on the **Touch Screen** or press the remote control's **OK** button. Next touch the **Tag** option on the **Display Menu** or select it with the remote control and press **OK**.

This screen appears:



The **Display Menu** lacks adequate space for label modification. To see what's available, use the remote control's down arrow. (This procedure is difficult to accomplish using the **Touch Screen**.)

A screen like this appears:



Album selection:

Touch the screen on any album and keep your finger there for a moment, or press the remote control's **OK** button. Next touch the display's **Tag** option or select it with the remote control's **OK** button.

A screen like this appears:



Album group selection:

Select a group of albums. For instance, within the **Genre** view go to **Jazz**. Touch the screen, keeping your finger on the **Jazz** group or press the remote control's **OK** button. Next touch the **Display Menu**'s **Tag** option or select it with the remote control and press **OK**.

A screen like this appears:



In all cases the **Menu** displayed next to **Tag** is the same. The differences consist in the changes you can make with single tracks or all albums' tracks.

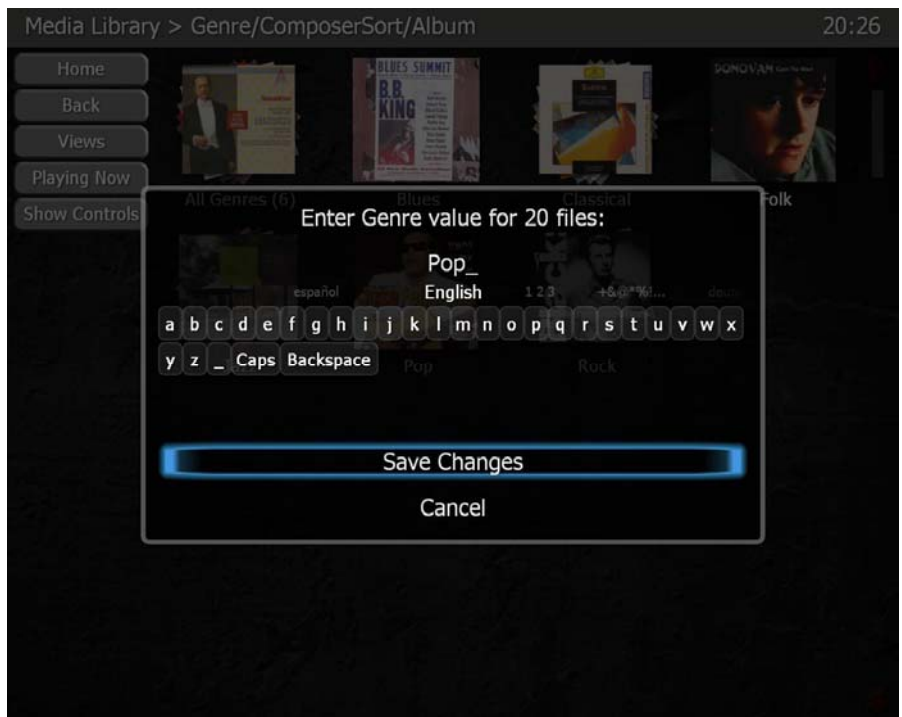
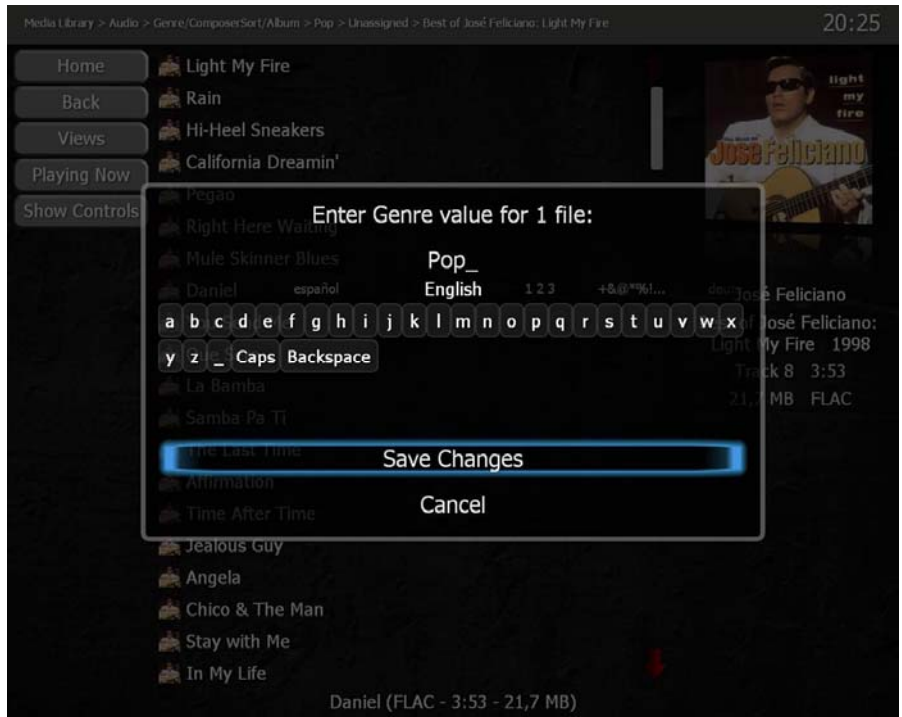
As you can see above, the options are:

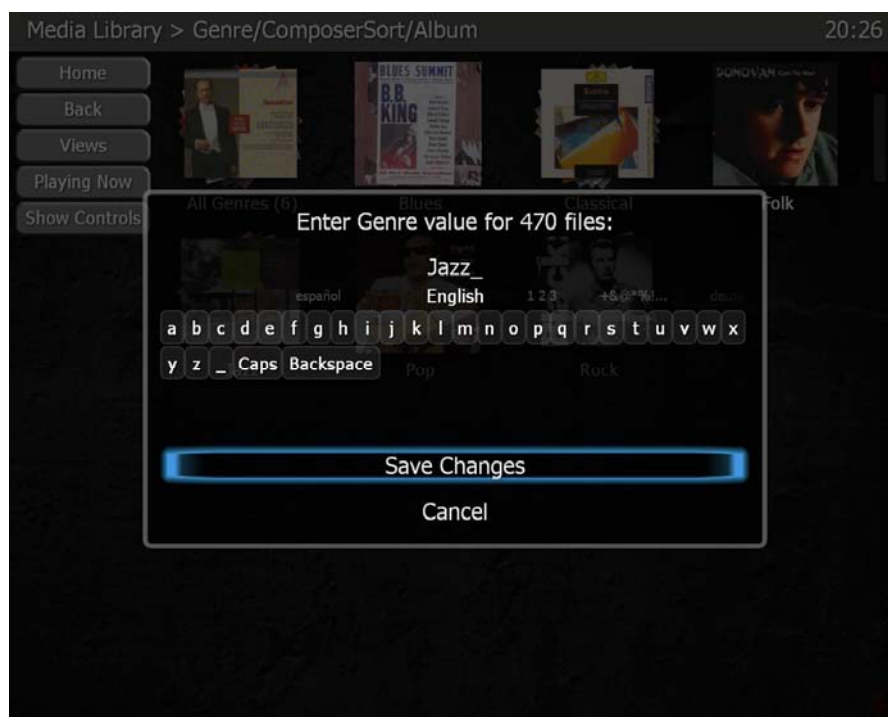
Set Album	Set Instrument
Set Artist	Set Label
Set CATALOGNUMBER	Set Name
Set Composer	Set Orchestra
Set ComposerSort	Set Period
Set Conductor	Set Soloists
Set Custom	Set SoloistsSort
Set Date	Set Style
Set Genre	Set Track #
More	

More, the last option, displays other labels for modification. These others are not operative in their current configuration, except for **Rating**, which permits you to assign a rating from 1 to 5 to each track.

In any of the above cases touch the screen over **Set Genre** or press the remote control's **OK** button.

The next three screens, corresponding to each of the previously made selections, appear:





As you can see, the only difference among the three screens is the number of tracks the action affects. In the first screen, you can change the **Genre** of a single track. In the second screen, you can change the **Genre** of 20 tracks (all album tracks), and in the third screen, the action will be imposed on 470 tracks (all the tracks in the **Jazz Genre**). This action will be accomplished in more or less time depending on the number of tracks.

In the same way you assign a name to a **Playlist**, the keyboard that appears in this screen has different language characters, as well as numbers and symbols. Once you've typed the new name, touch **Save Changes** or press the remote control's **OK** button to finalize the action.

How to obtain Cover Art:

The **MSR-1's Music Library** is contained in two files. One, called **Music**, containing all ripped tracks and discs, resides in **root C:**.

People with large CD collections often ask a digitalization company to rip their discs. These companies will rip CDs, along with labels and covers, and insert them in the corresponding **NuForce MSR-1 Directory**. For security, the company will also provide the client with an HDD containing the music it ripped.

When the user rips his or her own CDs and neglects to obtain the corresponding cover art from an Internet database, a musical note will appear on the screen as a substitution.

At present it's not possible to insert cover art via the **MSR-1**. The procedure therefore consists of obtaining the image with a scanner or from an Internet database or online music store (for example, Amazon.com) and inserting it from an external PC.

CDs ripped by the user are saved in another directory, **C:\Documents and Settings\hfx\My documents\My music**, which is shared on the computer network (Net).

From an external PC connected to the Net in the same domain as the **NuForce MSR-1**, the client's domestic Net can usually be found in **My Web Sites**, the shared music directory called **\hfx\My Music**.

If you're looking for a ripped CD with a **Tag**, <http://www.mp3tag.de/en/download.html>, a free, multi-lingual, easy-to-use Internet service is where you're most likely to find the cover art you want.

Once this action is performed, the **NuForce MSR-1** will recognize and present the CD's cover art. This feature can be accessed by remote control or, if the client purchases the remote control's maintenance option, by the system provider.

G. Search

Search is the second option in **Main Menu Home**. It will allow you to search your music libraries by all active fields:

Album	Instrument
Artist	Label
CATALOGNUMBER	Name
Composer	Orchestra
ComposerSort	Period
Conductor	Soloists
Custom	SoloistsSort
Date	Style
Genre	

Touch the screen or press the remote control's **OK** button on the **Search** option. Using the screen's keyboard, enter the text you're looking for. As in previous situations, characters in different languages are at your disposal.

This text will be searched for in all of your **Music Library's Tags** and tracks. The resulting list will show all the tracks containing the text.

Using procedures already explained in the **User's Guide**, you can select some or all tracks, play or add them to a **Playlist**, and save with the names of your choice.

The Search screen looks like this:





Smartlists:

Smartlists are a feature within **Playlists** consisting of previous system-created **Playlists**. **Smartlists** allow you to select tracks with very little effort.

Smartlist categories:

100 Random Songs
Imported This Month
Missing Cover Art
Not Recently Played
4 or 5 Stars

H. Installation

Unpack the system and the optional **Touch Screen** monitor.

The monitor will connect to the system through the provided VGA and USB cables (The **Touch Screen** monitor's implementation employs the USB cable). Connect the monitor to the power source.

Plug the **MSR-1** to the power source and connect it to Internet (RJ45 wire or WiFi USB adaptor). Connect the remote control RF receiver to a USB port.

Switch on the monitor and press **MSR-1**'s red rear-panel **ON** button.

The **Home** screen appears:



Make sure that both the remote control and **Touch Screen** are operative.

If a device does not operate correctly, see **Appendix A** for the necessary adjustment.

If the screen isn't calibrated – in other words, if the cursor appears in a position other than where the screen was touched – go to **Settings** via the remote control and select the **Calibration** option.

You can also connect a USB or PS2 mouse to make the first adjustments. **Switch off the system before connecting the mouse.**

Make the connection to your amplification according to its default configuration.

Back Panel:



MSR-1 is capable of playing two separate music streams through Zone 1 and Zone 2. The high performance coaxial digital output is only available for Zone 1 music. Zone 1 or Zone 2 music can be configured by selecting the corresponding buttons under the Audio menu. Select the desire Zone button and then proceed to select the music as described in this manual.

Installation of the remote control:



Once the USB receptor is connected at the computer, press its **Pair** button. The receptor's LED will remain lit for 20 seconds indicating synchronization.

Put the remote control close to the USB receptor.

Press the **Back** [1] and **Info** [2] buttons and keep them depressed for 3 seconds.

The USB receptor's LED will flicker for a few seconds to indicate that the connection has been made.

Display LED:

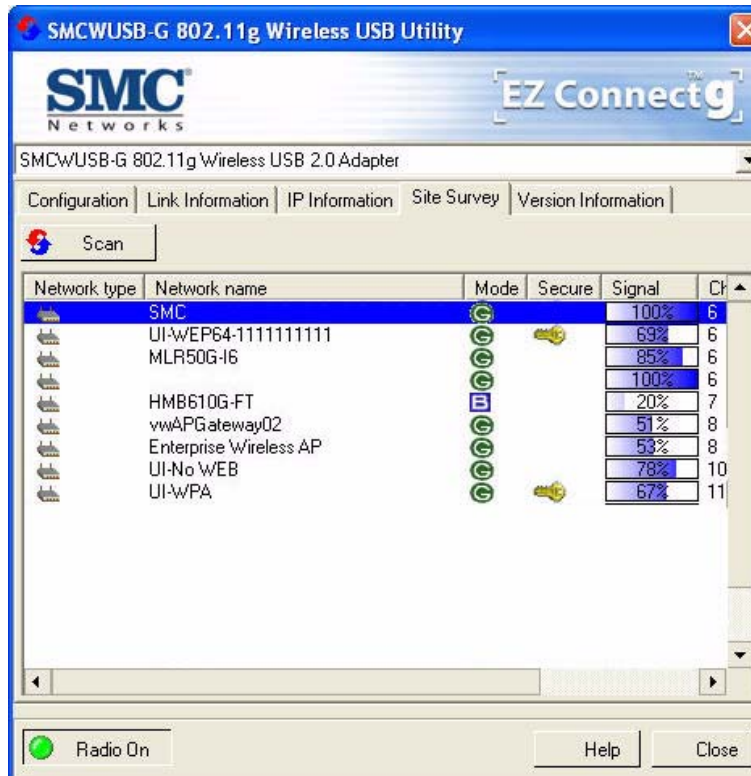
A DIP switch located on the bottom cover of the MSR-1 allows customization of the internal fan and display LEDs.

Switch 1: ON – factory default with temperature controlled fan running at full speed. OFF – allows for higher internal temperature and runs the fan at lower speed to reduce noise. With the fan running at lower speed, more heat will be dissipated to the top of the MSR-1 chassis (if Switch 1 is set to OFF, there must be sufficient clearance and ventilation on top of MSR-1)

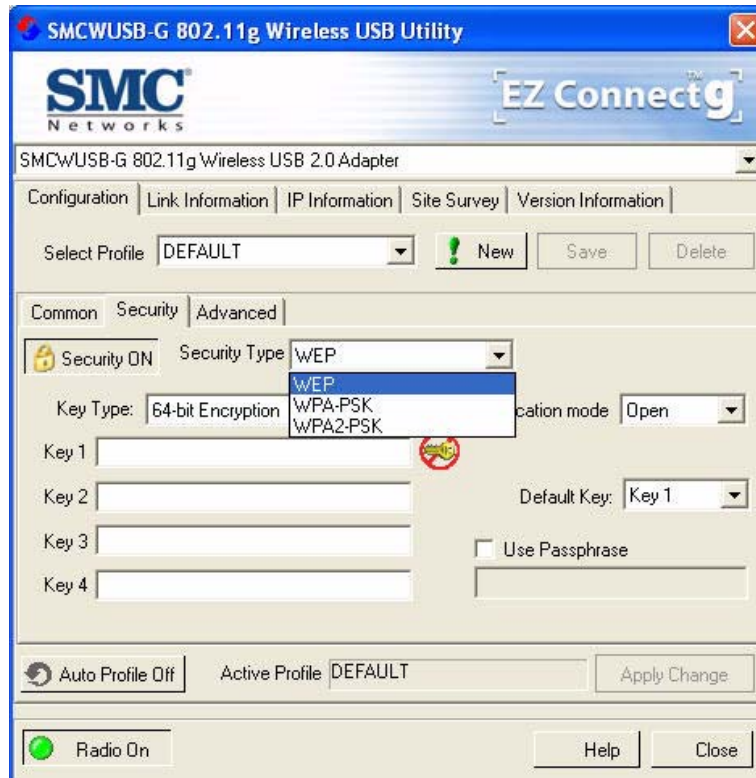
Switch 2: ON – Turn on white LED, factory default. OFF – Turn off white LED.

Switch 3: Leave it at factory default ON position.

Switch 4: ON – Turn on blue LED. OFF – Turn off blue LED. The blue LED light only occurs when there is hard disk activity.

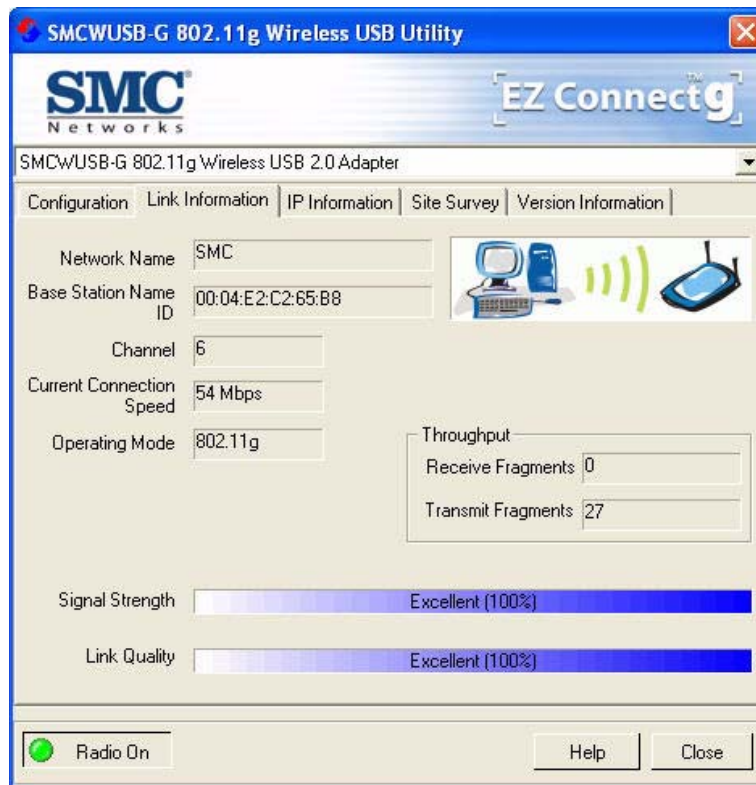
WIFI Configuration:

To select a wireless Net go to the **Site Survey** flap. Press the **Scan** button. A list of available Nets appears. Click twice on the Net you want to connect to. The following screen appears:



At this point you will have to enter your Net's configuration, which you obtained from the provider company. Once you've entered the data, press **Apply Change**.

The **Link Information** flap provides useful information about your connection. Make sure that the name of your wireless Net appears in the **Network Name** slot and that **Signal Strength** and **Link Quality** are at a satisfactory level.



Once the **MSR-1** is connected to your Net, each time you turn it on, it will link up automatically.

I. APPENDIX A

Settings:

Through the **Settings** screen you'll be able to set your **MSR-1**'s options as well as access tools for creating a backup copy of your library. The **Settings** screen also permits you to import music from a USB hard disc or other USB devices.

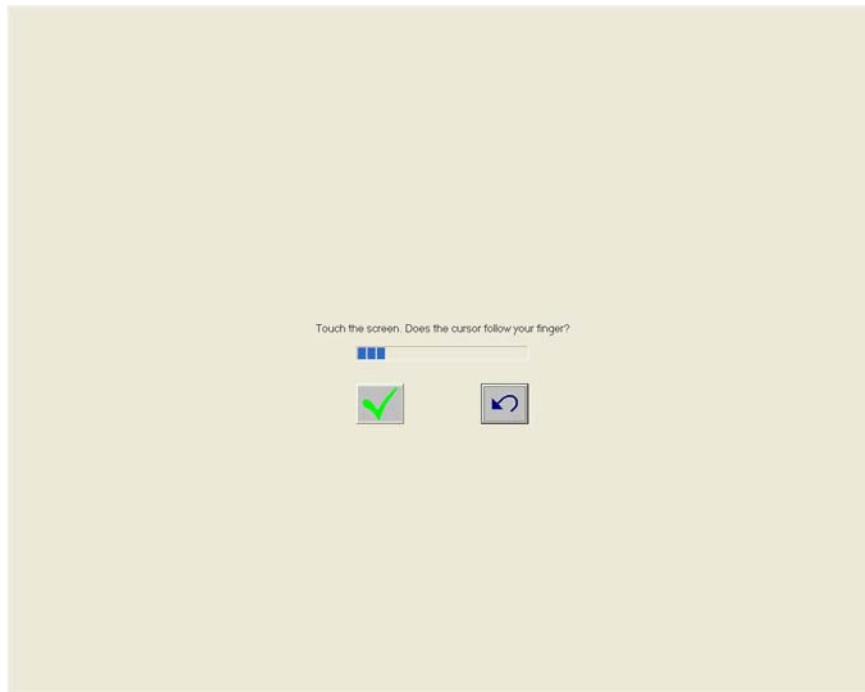
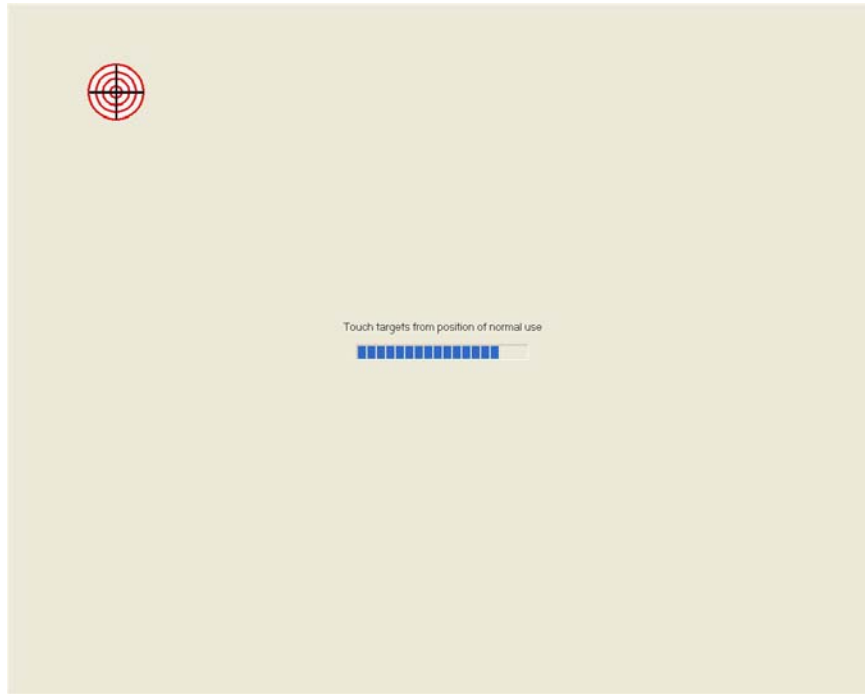
To access the **Settings** screen press the **Main Menu**'s **Settings** button.

The options are as follow:



1. Touch Screen Calibration

This option allows you to adjust the **Touch Screen** in order to detect the calibration pulsation's correct point. To accomplish this, press the screen's red target. (The screen's appearance may change depending on the **Touch Screen** in use.)



We recommend performing this operation as soon as you connect the **Touch Screen** to the **MSR-1**.

2. Display/TV

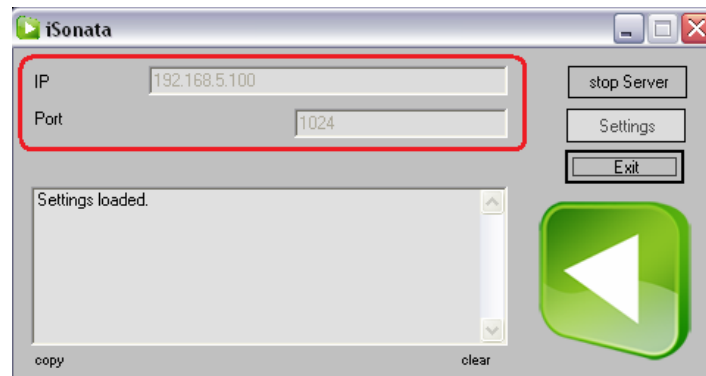
This option permits you to link the **MSR-1**'s video output to your TV or **Touch Screen**, or both simultaneously.



3. iSonata Remote Control

If you have purchased the **iSonata** application to operate your **MSR-1** from an iPod Touch/iPhone, you'll need to know your server's IP address and the **iSonata** operation port that connects you to your iPod Touch/iPhone.

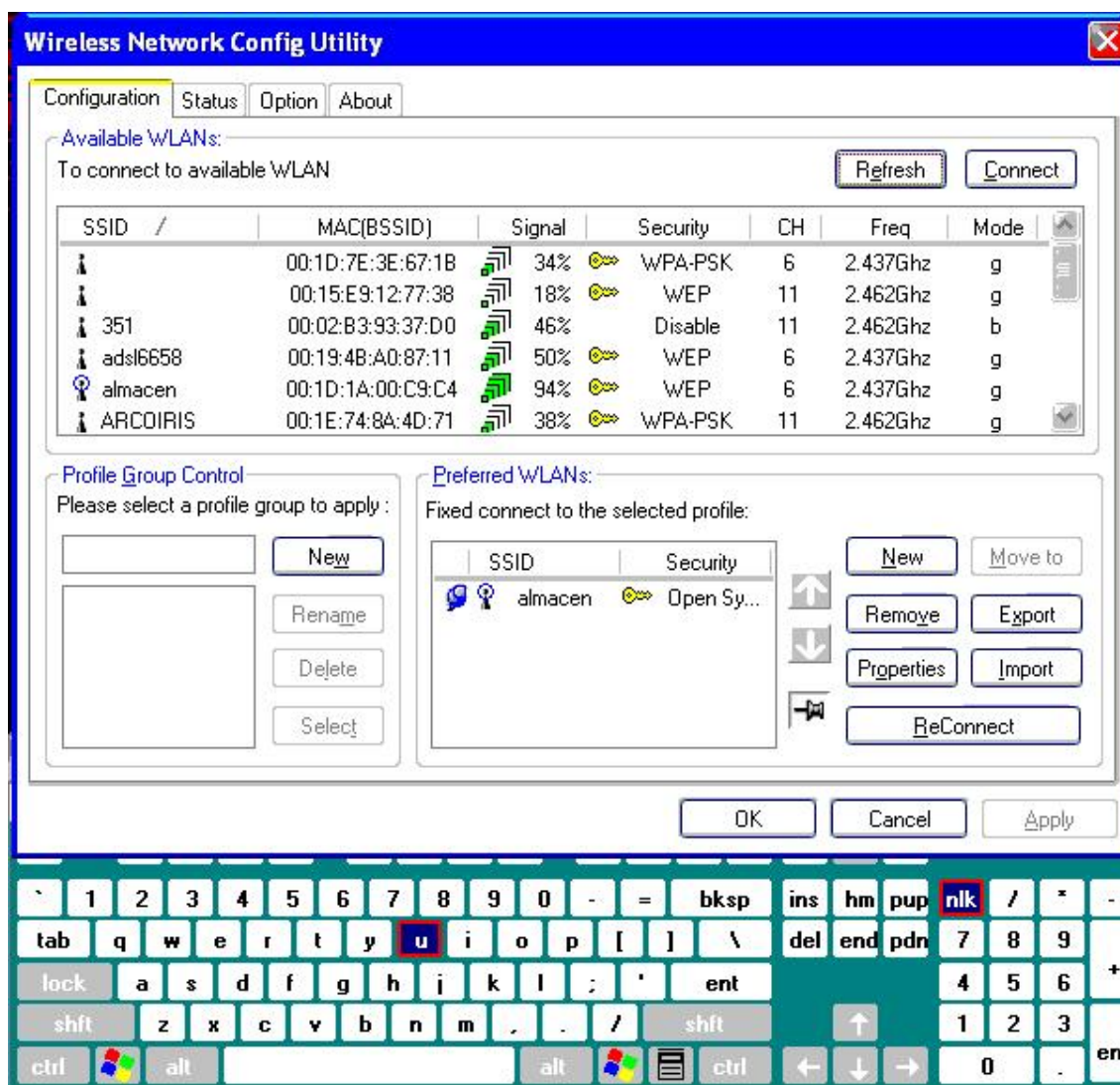
In selecting this option you'll see these parameters in the **IP** and **Port** fields:



While you are free to configure the **iSonata** application, we recommend against this since the device has already been configured at the factory.

4. WiFi

This option permits you to select the wireless Net you want the **MSR-1** to connect to. If you wish, you will be able to use a password to connect the **MSR-1** to the local area Net. The example screen below may differ depending on the WiFi adaptor in use.



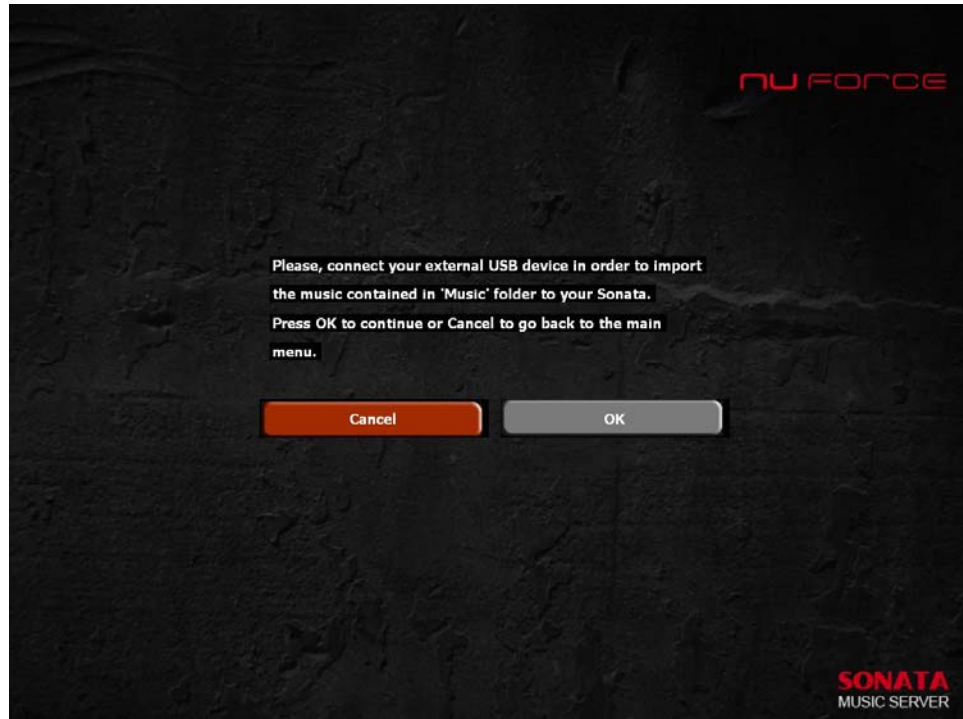
It is recommended that the **MSR-1** has Internet access so that it can connect to music databases to obtain the album's name, cover, tracks names, etc., as you rip a CD.

5. Import Music

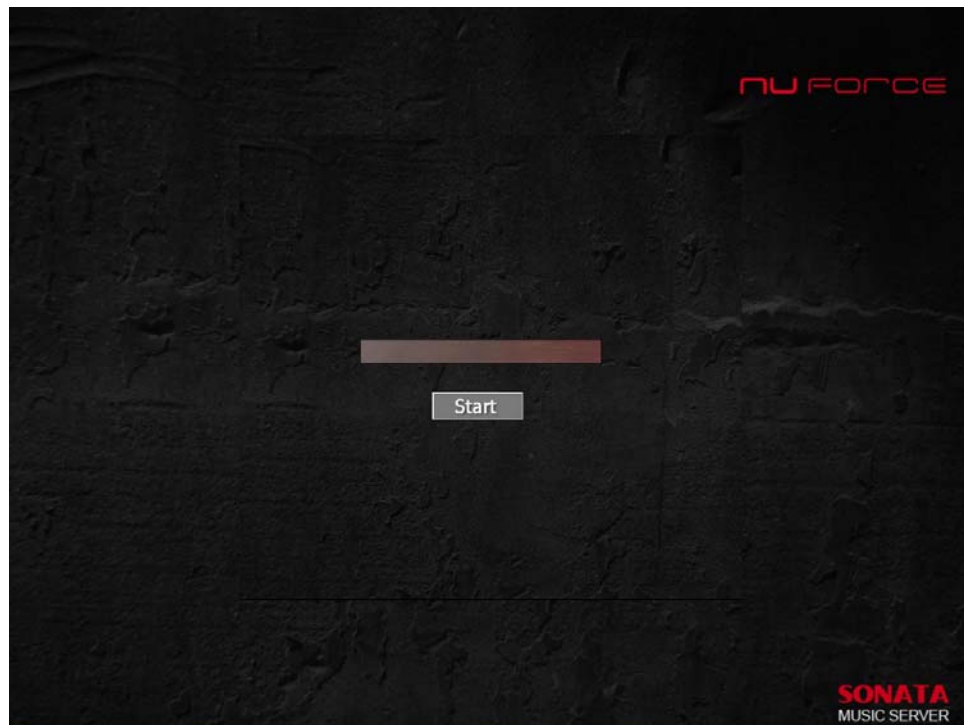
If you already have music files in Mp3, Wav, Flac or other formats, you can add them to your **MSR-1** by following these steps:

- 5.1: Copy your music to an external hard disc or other external storage device in a folder called **Music**, which has to be in the root directory.
- 5.2: Connect this device to one of the USB ports of the system.

5.3: Select the **Import Music** option on the **Settings** screen and press **OK**.

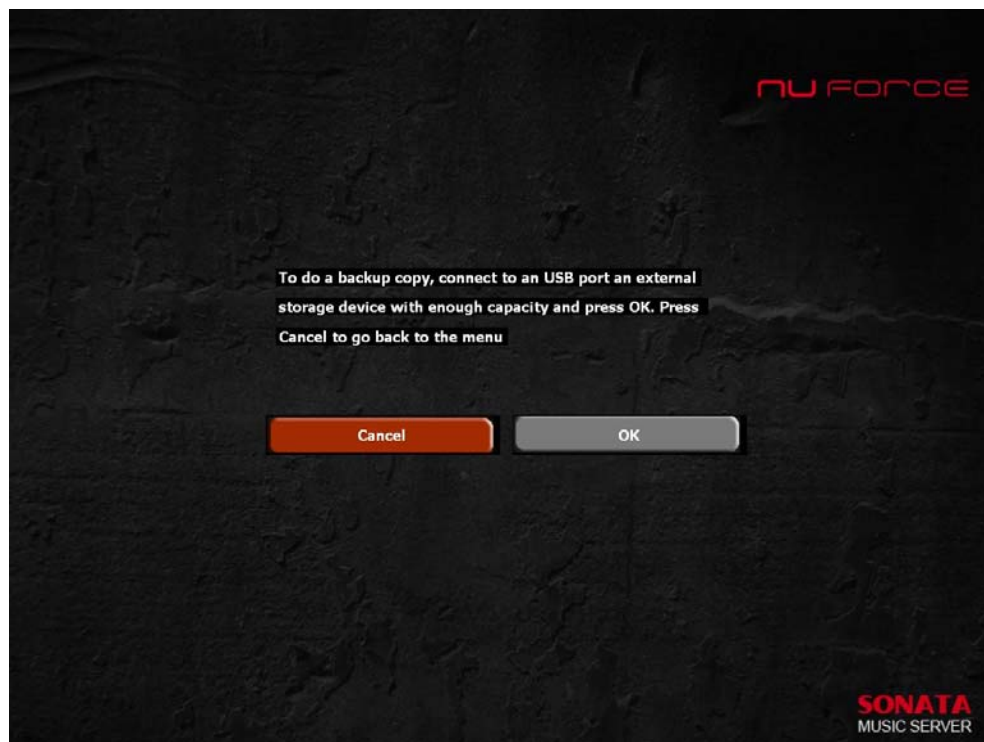


5.4: Press the **Start** button and wait for the copy to finish.



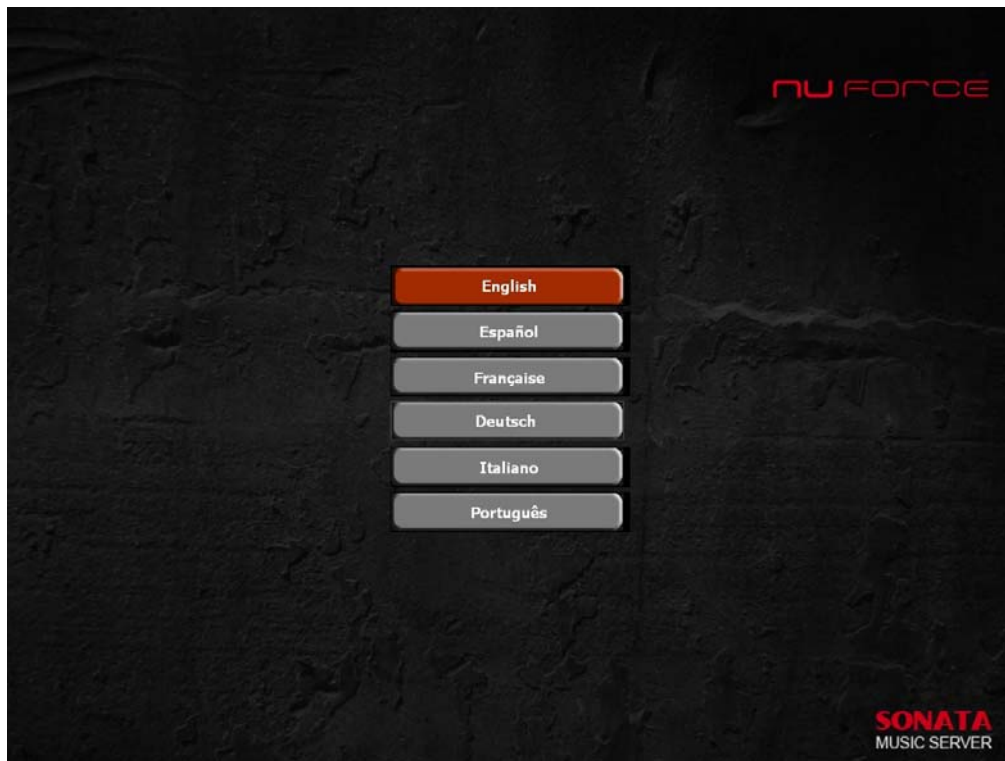
6. Backup

This option allows you to do a backup of your **Music Library**. Connect your system to a USB storage device with enough free space for all of your music.



7. Language

Here you can change the **MSR-1**'s language:



8. Main Menu

This takes you back to the **MSR-1**'s initial screen.

For unavailable options, this screen appears:



TERMS AND CONDITIONS OF SALE

Scope. These terms and conditions of sale (these “**Terms**”) apply to all sales of products (the “**Products**”) by NuForce Inc. (“NuForce”), a California corporation, to buyer of the Products (“Buyer”). These Terms (along with the specific terms of the attached purchase order) constitute the complete and entire agreement between the parties relating to the subject matter hereof, and supersede any and all prior and contemporaneous other terms or conditions, whether oral or written, including negotiations, prior quotations and purchase orders between the parties. These Terms may be modified only by a writing signed and approved by an authorized representative of NuForce. NuForce’ failure to object to any term or condition contained in any communication from Buyer (including in any purchase order) shall not be deemed a waiver or modification of these Terms. These Terms shall not be modified, supplemented, qualified or interpreted by any trade usage or prior course of dealing.

Orders. Subject to Section 0, a contract between NuForce and Buyer shall be formed only upon NuForce’ written acceptance of Buyer’s order or shipment of Products to Buyer pursuant to Buyer’s written purchase order. If NuForce accepts by shipment, then the acceptance shall only be for the quantity shipped.

Title and Delivery.

Title and Risk of Loss. Delivery is F.O.B. NuForce’ point of shipment (“**Delivery**”). NuForce may exercise NuForce’ own discretion in selecting the method of shipment. The risk of loss passes to Buyer upon delivery to the carrier at NuForce’ point of shipment. NuForce retains title to the Products until NuForce has received payment in full of all sums due in connection with the sale of Products to Buyer. NuForce hereby reserves and Buyer hereby grants to NuForce a purchase money security interest in the Products sold and the proceeds thereof, including accounts receivable, until Buyer pays NuForce the purchase price in full.

Shipment and Delivery. Any scheduled ship date quoted is approximate and not the essence of the contract. Claims of late delivery are barred unless made prior to receipt of Products. Buyer’s sole remedy for delay in or failure to deliver shall be cancellation of the applicable order.

Pricing. NuForce reserves the right to increase prices for any unshipped Products if the cost to NuForce for supplies, raw materials, labor or services is materially increased. The prices quoted on the attached purchase order shall be valid only for the period of time there indicated. All prices are exclusive of transportation, insurance, taxes, duties and other charges related thereto; unless NuForce receives a certified tax exemption from Buyer prior to shipment. Buyer agrees to indemnify, defend and hold NuForce harmless from any loss or expense arising out of or related to NuForce’ reliance on any tax exemption provided by Buyer.

Payment. Except as otherwise specifically designated on the invoice, payment shall be due and payable within 30 days from the date of the invoice. NuForce reserves the right at any time to modify or withdraw any credit extended to Buyer. If in NuForce’ sole discretion, NuForce may require full or partial payment in advance of any shipment of Product. If Buyer becomes delinquent in any payment to NuForce, NuForce has the right to suspend performance until such delinquency is corrected. Regardless of any statement appearing on a check in payment for Product, NuForce’ acceptance of such check shall not constitute a waiver of NuForce’ right to pursue the collection of any remaining balance. NuForce reserves the right to charge a late fee on late payments at the lesser of one and 1.5% per month or the maximum rate allowable by law, together with NuForce’ costs of collections including attorneys’ fees.

Acceptance. Use of the Products by Buyer or its agents, or the failure by Buyer to reject the Products within 5 days following Buyer’s delivery of such Products shall constitute acceptance by the Buyer.

NuForce’ Limited Warranty and Limitation of Liabilities.

Full Refund Period. For a period of 30 days after shipment (the “**Refund Period**”), Buyer may return the Products to NuForce for a full refund. To qualify for this refund, the Products must be returned in their original packaging and a 15% restocking fee will apply to damaged (including blemish on product’s surface) Products.

Limited Warranty. For a period (as specified in the Warranty Coverage section) after conclusion of the Refund Period, NuForce warrants (i) this product against defects in materials and workmanship, and (ii) that each Product, unmodified and under normal use and conditions, will substantially comply with NuForce’ applicable written technical documentation for the Product. NuForce reserves the right to make substitutions and modifications from time to time in the specifications of Products sold by NuForce, provided that such substitutions or modifications do not materially affect overall Product performance.

Limitations. EXCEPT FOR NUFORCE’ LIMITED WARRANTY SET FORTH IN SECTION 0 ABOVE, NUFORCE SPECIFICALLY DISCLAIMS ANY AND ALL EXPRESS, IMPLIED OR STATUTORY WARRANTIES, INCLUDING THE IMPLIED WARRANTIES OF FITNESS FOR A PARTICULAR PURPOSE, OF MERCHANTABILITY AND AGAINST INFRINGEMENT. THE EXPRESS WARRANTY IN SECTION 0 ABOVE SHALL EXTEND TO BUYER ONLY AND NOT TO BUYER’S CUSTOMERS OR ANY THIRD PARTY. NO PERSON IS AUTHORIZED TO MAKE ANY WARRANTY OR REPRESENTATION ON BEHALF OF NUFORCE CONCERNING THE PRODUCTS OTHER THAN THE LIMITED WARRANTY EXPRESSLY SET FORTH IN SECTION 0. BUYER WILL BE SOLELY RESPONSIBLE FOR AND WILL INDEMNIFY, DEFEND AND HOLD HARMLESS NUFORCE FROM AND AGAINST ANY AND ALL LIABILITIES, DAMAGES, COSTS AND EXPENSES RELATED TO ANY WARRANTIES WITH RESPECT TO THE PRODUCTS OTHER THAN THOSE SET FORTH IN SECTION 0 OR ANY USE OF THE PRODUCTS OR RESALE OF THE PRODUCTS.

Liability. With respect to any claims asserting breach of the limited warranty set forth in Section 0, NuForce’ exclusive liability and Buyer’s sole remedy, is at NuForce’ option, to replace or repair the defective Product or to issue credit to Buyer for the purchase price of the Product (without interest), provided that prior to any replacement, repair or credit the following conditions are satisfied:

(i) NuForce is promptly notified in writing by Buyer upon discovery of any such default; (ii) the defective Product is returned to NuForce, transportation charges prepaid by Buyer, accompanied by a brief statement explaining the alleged defect; and (iii) NuForce’ examination of such Product shall disclose to NuForce’ satisfaction that such failures did not arise as a result of misuse, abuse,

improper installation or application, repair, alteration, or accident, or negligence in use, storage, transportation or handling by anyone other than NuForce. Any replacement Product will be warranted for the remainder of the original warranty period or 30 days, whichever is longer. NuForce shall in no event be responsible for any labor costs, or otherwise, incurred by Buyer incident to the replacement of any defective Product. If NuForce determines that the returned Product conformed to the warranties, NuForce will return the Product to Buyer at Buyer's expense.

NUFORCE SHALL NOT BE LIABLE FOR INDIRECT, SPECIAL, INCIDENTAL, CONSEQUENTIAL OR SPECIAL DAMAGES OF ANY NATURE INCLUDING WITHOUT LIMITATION LOSS OF PROFIT, PROMOTIONAL OR MANUFACTURING EXPENSES, OVERHEAD, DATA, INJURY TO REPUTATION OR LOSS TO CUSTOMERS, ARISING OUT OF OR IN CONNECTION WITH THE PURCHASE, SALE, USE, PERFORMANCE OR FAILURE OF THE PRODUCTS, WHETHER SUCH LIABILITY ARISES UNDER CONTRACT, TORT (INCLUDING NEGLIGENCE), STRICT PRODUCT LIABILITY OR OTHERWISE, EVEN IF NUFORCE HAS BEEN ADVISED OF THE POSSIBILITY OF SUCH DAMAGES OR IF SUCH DAMAGE COULD HAVE BEEN REASONABLY FORESEEN. IN NO EVENT WILL NUFORCE' LIABILITY TO BUYER ARISING OUT OF OR RELATING TO THESE TERMS EXCEED THE AMOUNT OF THE PURCHASE PRICE PAID TO NUFORCE BY BUYER FOR THE PRODUCT THAT GIVES RISE TO THE CLAIM.

Default. If Buyer becomes insolvent, bankrupt, makes an assignment for the benefit of its creditors or is otherwise unable to meet Buyer's obligations as they come due, NuForce may decline to make further shipments without in any way affecting NuForce' rights under these Terms. If, NuForce elects to continue to make shipments, NuForce' action shall not constitute a waiver of any default by Buyer or in any way affect NuForce' legal remedies of any such default.

Assignment. Buyer shall not assign Buyer's order or any interest in or any rights hereunder without the prior written consent of NuForce.

Confidentiality. Buyer acknowledges that Buyer may gain access to trade secrets and confidential information of NuForce. At all times Buyer agrees not to disclose NuForce' trade secrets or confidential information to any third party without the express written consent of NuForce. Buyer further agrees to undertake all steps necessary to maintain the secrecy of NuForce' trade secrets and confidential information.

Miscellaneous. All notices, authorizations, and requests shall be deemed given on receipt. These Terms shall be governed by the laws of the State of California without reference to that state's choice of law provisions. The California state courts of Santa Clara County, California or the United States District Court for the Northern District of California shall have exclusive jurisdiction and venue over any dispute arising out of this Agreement, and each party hereby consents to the jurisdiction and venue of such courts. All waivers of the exercise any remedy or option provided herein, or to require any performance by Buyer must be in a writing signed by NuForce. If any provision of these Terms is declared invalid, illegal or unenforceable, all remaining provisions shall continue in full force and effect. Nonperformance of either party, except for the making of payments, shall be excused to the extent that performance is delayed or rendered impossible by any reason where failure to perform is beyond the reasonable control of the non-performing party



Nuforce One Year (Two Year Parts) Limited Warranty

WARRANTY COVERAGE

NuForce's warranty is specified in **NuForce Terms and Conditions of Sale**. If a defect exists, at its option NuForce will (1) repair the product at no charge, using new or refurbished replacement parts, (2) exchange the product with a product that is new or which has been manufactured from new or serviceable used parts and is at least functionally equivalent to the original product, or (3) refund the purchase price of the product. A replacement product/part assumes the remaining warranty of the original product or ninety (90) days from the date of replacement or repair, whichever provides longer coverage for you. When a product or part is exchanged, any replacement item becomes your property and the replaced item becomes NuForce's property. When a refund is given, your product becomes NuForce's property.

OBTAINING WARRANTY SERVICE

If you purchased the product in the U.S., deliver the product, at your expense, to any NuForce Service Center located in the U.S. If you purchased the product outside of the U.S., deliver the product to any NuForce Authorized Importer in the country where you purchased the product. Be aware, however, that not all countries have NuForce Authorized Service Providers and not all Authorized Service Providers outside the country of purchase have all parts or replacement units for the product. If the product cannot be repaired or replaced in the country it is in, it may need to be sent to a different country or returned to the country of purchase at your expense for repair or replacement. You can always deliver the product to NuForce's U.S. main service center for obtaining warranty service.

EXCLUSIONS AND LIMITATIONS

This Limited Warranty applies only to hardware products manufactured by or for NuForce that can be identified by the "NuForce" trademark, trade name, or logo affixed to them. The Limited Warranty does not apply to any non-NuForce hardware products or any accessories, even if packaged or sold with NuForce hardware. Non-NuForce manufacturers, suppliers, may provide their own warranties. Other accessories distributed by NuForce under the NuForce brand name are not covered under this Limited Warranty. This warranty does not apply: (a) to damage caused by accident, abuse, misuse, misapplication, or non-NuForce products; (b) to damage caused by service performed by anyone who is not an NuForce Authorized Service Provider; (c) to a product or a part that has been modified without the written permission of NuForce; or (d) if any NuForce serial number has been removed or defaced.

THIS WARRANTY AND REMEDIES SET FORTH ABOVE ARE EXCLUSIVE AND IN LIEU OF ALL OTHER WARRANTIES, REMEDIES AND CONDITIONS, WHETHER ORAL OR WRITTEN, EXPRESS OR IMPLIED. NUFORCE SPECIFICALLY DISCLAIMS ANY AND ALL IMPLIED WARRANTIES, INCLUDING, WITHOUT LIMITATION, WARRANTIES OF MERCHANTABILITY AND FITNESS FOR A PARTICULAR PURPOSE. IF NUFORCE CANNOT LAWFULLY DISCLAIM IMPLIED WARRANTIES UNDER THIS LIMITED WARRANTY, ALL SUCH WARRANTIES, INCLUDING WARRANTIES OF MERCHANTABILITY AND FITNESS FOR A PARTICULAR PURPOSE ARE LIMITED IN DURATION TO THE DURATION OF THIS WARRANTY. No NuForce reseller, agent, or employee is authorized to make any modification, extension, or addition to this warranty. NUFORCE IS NOT RESPONSIBLE FOR DIRECT, SPECIAL, INCIDENTAL OR CONSEQUENTIAL DAMAGES RESULTING FROM ANY BREACH OF WARRANTY OR CONDITION, OR UNDER ANY OTHER LEGAL THEORY, INCLUDING BUT NOT LIMITED TO LOST PROFITS, DOWNTIME, GOODWILL, DAMAGE TO OR REPLACEMENT OF EQUIPMENT AND PROPERTY, ANY COSTS OF RECOVERING, REPROGRAMMING, OR REPRODUCING ANY PROGRAM OR



DATA STORED IN OR USED WITH NUFORCE PRODUCTS, AND ANY FAILURE TO MAINTAIN THE CONFIDENTIALITY OF DATA STORED ON THE PRODUCT. NUFORCE SPECIFICALLY DOES NOT REPRESENT THAT IT WILL BE ABLE TO REPAIR ANY PRODUCT UNDER THIS WARRANTY OR MAKE A PRODUCT EXCHANGE WITHOUT RISK TO OR LOSS OF PROGRAMS OR DATA. Some states and provinces do not allow the exclusion or limitation of incidental or consequential damages or exclusions or limitations on the duration of implied warranties or conditions, so the above limitations or exclusions may not apply to you. This warranty gives you specific legal rights, and you may also have other rights that vary by state or province.

(c) 2007 NuForce, Inc. All rights reserved. NuForce and the NuForce logo are trademarks of NuForce Inc., registered in the U.S. and other countries