

Baronet

Specifications—Baronet

_____ projection screens, size _____ h. x _____ w., wall/ceiling mounting. Pentagonal case of 22 ga. steel, flat back design, with scratch-resistant white polyester finish. Endcaps finished to match case, with integral roller brackets, concealing roller ends and matching universal mounting brackets. Electrically operated (110-120V AC, 60 hz./220-230v AC, 50 hz.) 3-wire motor mounted inside (1⁵/₈"/1³/₄") motor roller, instantly reversible, lifetime lubricated, with thermal overload protector and electric brake. Preset, accessible limit switches.

Standard Baronet—Provided with 3-position in-line operating switch, 110-120V AC model with or without standard plug, 220V model without plug. 110-120V unit with U.S. plug certified by UL.

Baronet/HW—Provided with 3-position wall switch for 110V AC or 220V AC. 110V unit certified by UL. 220V unit CE certified, and provided with 3-position, surface mount wall switch.

All screens shall be provided with a [10' (3m) power cord and 3-position in-line operating switch] [6"-8" (15-20 cm) leads and 3-position wall switch].

Viewing surface of ([GREENGUARD for Children and Schools certified Matt White] [glass beaded] [optional GREENGUARD for Children and Schools certified High Contrast Grey]), flame and mildew resistant. Matt White and optional High Contrast Grey viewing surfaces shall qualify as low emitting and meet all of the requirements of the GREENGUARD for Children and Schools and GREENGUARD certification program, which are: emissions of total volatile organic compounds ≤ 0.22 mg/m³, formaldehyde ≤ 0.0135 ppm, total aldehydes ≤ 0.043 ppm, individual volatile organic compounds ≤ 1/1000 TLV and ≤ ½ chronic REL and total phthalates ≤ 0.01 mg/m³. Fabric attached to one-piece rigid steel roller with tape. Bottom of viewing surface attached to weighted dowel. Note: Matt white and glass beaded surfaces up to 10' (305) cm high will be seamless.



Motor-in-Roller Electric Screen

Dimensions & Data

	Metric H x W (cm)	U.S. H x W	Case cm	Length U.S.	Net Wt. kg lbs.	Qty.
AV Format (1:1)						
	127 x 127	50" x 50"	140	55¼"	7 15	
	152 x 152	60" x 60"	166	65¼"	9 19	
	178 x 178	70" x 70"	191	75¼"	10 21	
	213 x 213	84" x 84"	227	89¼"	14 30	
	183 x 244	72" x 96"	258	101¾"	15 31	
	244 x 244	96" x 96"	258	101¾"	15 32	

	Nominal Diagonal	Image Area Metric (cm)	U.S.	Overall Size Metric (cm)	U.S.	Case cm	Length U.S.	Net Wt. kg lbs.	Qty.
NTSC/PAL Video Format (4:3)									
	6"/183 cm	108 x 144	42½" x 56½"	118 x 151	46½" x 59½"	166	65¼"	9 19	
	7"/213 cm	127 x 169	50" x 66½"	136 x 177	53½" x 69½"	191	75¼"	10 21	
	100"/254 cm	152 x 203	60" x 80"	163 x 212	64" x 83½"	227	89¼"	14 30	
	107"/305 cm	175 x 234	69" x 92"	185 x 244	73" x 96"	258	101¾"	15 32	

HDTV Format (16:9)									
	65"/165 cm ¹	81 x 144	31¾" x 56½"	111 x 151	43¾" x 59½"	166	65¼"	9 19	
	73"/185 cm ¹	91 x 163	36" x 64"	122 x 177	48" x 69½"	191	75¼"	10 21	
	82"/208 cm ¹	103 x 183	40½" x 72"	133 x 188	52½" x 74"	202	79¾"	14 30	
	92"/234 cm ¹	114 x 203	45" x 80"	145 x 212	57" x 83½"	227	89¼"	15 31	
	106"/269 cm ¹	132 x 234	52" x 92"	163 x 244	64" x 96"	258	101¾"	15 32	

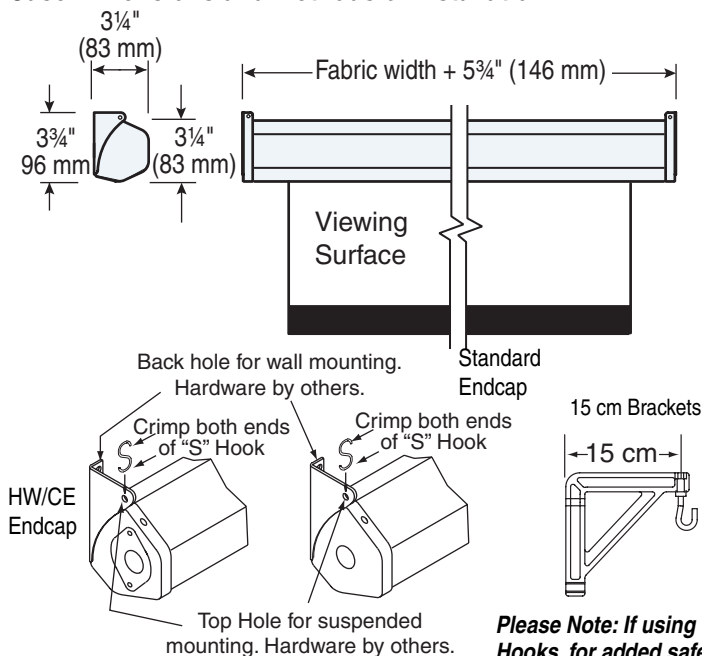
16:10 Format									
	67"/170 cm ¹	90 x 144	35¼" x 56½"	120 x 151	47¼" x 59½"	166	65¼"	9 19	
	76"/193 cm ¹	102 x 163	40" x 64"	132 x 177	52" x 69½"	191	75¼"	10 21	
	85"/216 cm ¹	114 x 183	45" x 72"	145 x 188	57" x 74"	202	79¾"	14 30	
	94"/239 cm ¹	127 x 203	50" x 80"	157 x 212	62" x 83½"	227	89¼"	15 31	
	109"/277 cm ¹	146 x 234	57½" x 92"	177 x 244	69½" x 96"	258	101¾"	15 32	

WideScreen Format (1.85:1)									
	99"/251 cm	119 x 221	47" x 87"	130 x 229	51" x 90"	243	95¾"	14 30	
	108"/275 cm	127 x 234	50" x 92"	137 x 244	54" x 96"	258	101¾"	15 32	

Custom Size

¹ These sizes include 12" black drop as standard.

Case Dimensions and Methods of Installation



Please Note: If using "S" Hooks, for added safety, crimp both ends of the "S" hooks so the screen cannot come off.

Also available in 2.35:1 and 15:9 Formats. Contact Draper.

Please Check All Appropriate Selections

Select Viewing Surface:

- ☐ GREENGUARD for Children and Schools certified Matt White
- ☐ Glass Beaded
- ☐ GREENGUARD for Children and Schools certified Optional High Contrast Grey

Select Model:

- ☐ **Baronet**—3-Position In-Line Operating Switch (No wiring required)
 - ☐ 110V AC With 3-prong plug
 - ☐ 110V AC (Without Plug)
 - ☐ 220V AC (Without Plug)
- ☐ **Baronet/HW**—3-Position Wall Switch (See wiring diagram on back)
 - ☐ 110V AC (UL certified)
 - ☐ 220V AC (CE certified)

Optional Accessories:

- ☐ 24V Low Voltage Control (With 3-Position Wall Switch Only)
- ☐ Radio Frequency Remote Control (With 24V Only)
- ☐ Infrared Remote Control (With 24V Only)
- ☐ 15 cm Mounting Brackets
- ☐ Black Masking Borders (Standard on NTSC, HDTV & WideScreen Sizes)
- ☐ Extra Screen Drop (Total screen height cannot exceed 244 cm/96")
 - ☐ Same color as viewing surface (standard on AV format screens)
 - ☐ Black (standard on all other formats)

Length of extra screen drop required _____

PROJECT: _____

ARCHITECT: _____

CONTRACTOR: _____

SUPPLIER: _____

DATE: _____ REVISED: _____

DRAPER

411 S. Pearl St., Spiceland, IN 47385 USA ■ +1 765-987-7999

www.draperinc.com ■ fax +1 765-987-1689

Copyright © 2009 Draper Inc.

Form Baronet_Int_Sub09-R3

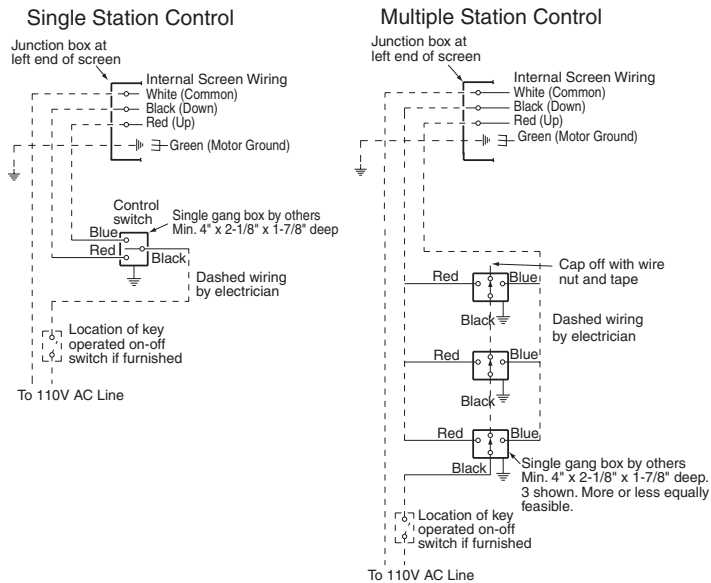
Printed in U.S.A.

Wiring Diagrams

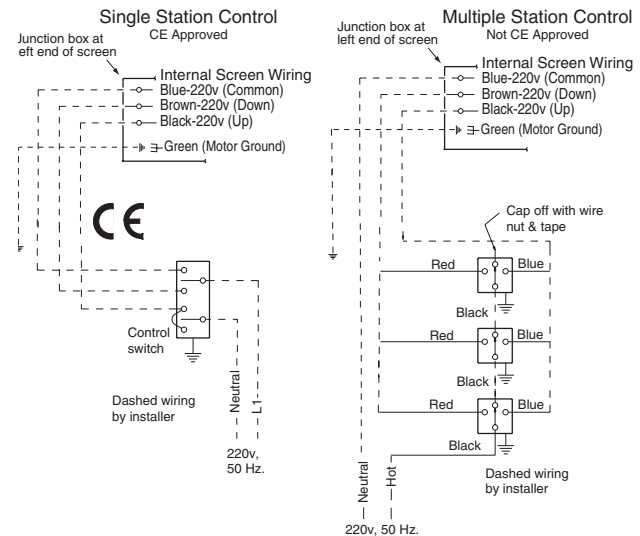
Standard Baronet 110V or 220V

Blue or White = Neutral
Brown or Black = Line
Green = Ground

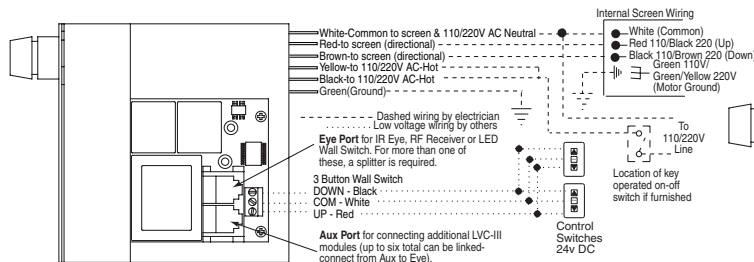
Baronet/HW 110V AC



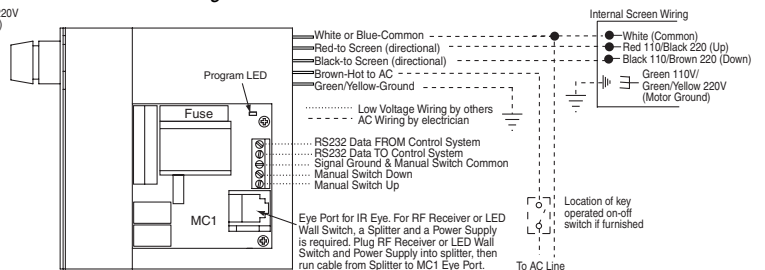
Baronet/HW 220V AC (CE)



Low Voltage, IR Remote or RF Remote (LVC-III)**

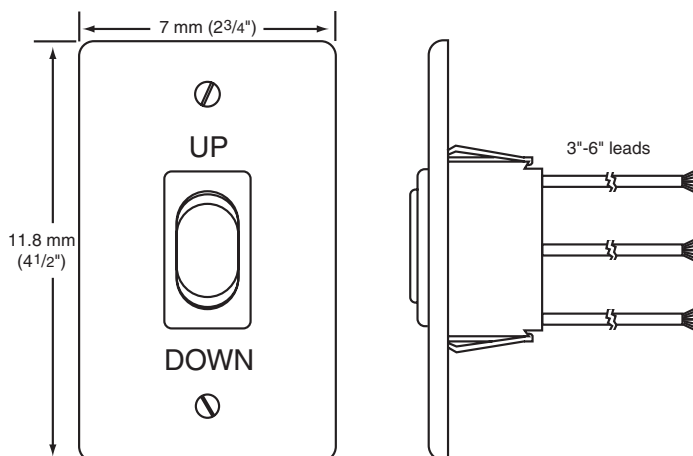


MC1**
See separate Serial Communication-RS232 Instruction sheet for enabling RS232 with the MC1.



*** For more information and wiring diagrams for low voltage multiple motors and network communication, please see Draper Screen and Lift Controls Planning Sheet, Draper Screens and Lift Controls Wiring Manual and wiring diagrams supplied with individual items.**

110-120V 3-Position Wall Switch



220V 3-Position, Surface Mount Wall Switch

