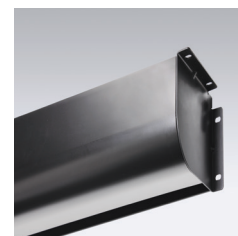


PREMIER

MOTORIZED TAB TENSIONED PROJECTION SCREEN



■ The PREMIER has a black finished, metal case designed for surface mounting on wall or ceiling. The tab tensioning system holds the surface taut and wrinkle free. Motor-in-roller is mounted on special vibration insulators so it operates smoothly and quietly.

FEATURES

- CASE DIMENSIONS: 5-7/8" H x 5-1/4" D (14.9 cm x 13.3 cm).
- LARGE CASE DIMENSIONS: Some sizes require large case: 6-3/4" H x 6-3/4" D (17.7 cm x 17.7 cm).
- INCLUDES: One 110 - 12V or 220V 3-position switch.
- BLACK BORDERS: Image area is framed with black borders on all four sides.
- BLACK DROP: 12" (30 cm) black drop above viewing area.
- WARRANTY: One year against defects in materials and workmanship.

OPTIONS

- VIEWING SURFACE: Available with *viewing surfaces* from the TecVision (premium engineered) OptiFlex (tensioned), CineFlex (rear projection) and ClearSound (acoustically transparent) families.
- COLOR: Black case standard with matching endcaps, white case available upon request.
- EXTRA DROP: Available on request.
- ACCESSORIES: These *accessories* available.
- CONTROLS: These standard *control options* available.
- MOTORS: Available with *Plug & Play with built-in and low voltage* options.

SIZES

- 16:10 FORMAT: 67" (170 cm) to 226" (574 cm) dia.
- 16:9 FORMAT: 65" (165 cm) to 220" (559 cm) dia.
- 4:3 NTSC/PAL FORMAT: 72" (183 cm) to 20' (610 cm) dia.
- AV FORMAT: from 50" x 50" (127 cm x 127 cm) to 12' x 16' (366 cm x 488 cm)
- CUSTOM SIZES AVAILABLE

SUPPORTING DOCUMENTS

All instructions, technical drawings and other supporting documents are located at:
www.draperinc.com/Documents.aspx



For more information on this product visit:
www.draperinc.com/go/Premier.htm