

## Genesis® Series GSP-500-DLX LARGE PEDALBOARD - 24" x 14.25"

The new GSP-500-DLX Genesis Series pedalboard from Ultimate Support brings the forward thinking, full stop pedalboard solutions of the GSP-500-BK to the next level. You still get the universal power supply mounting system that uses strong, dependable clamps to fit a wide variety of power supplies underneath the board. You still get the integrated cable management clips in our specially angled design - preventing cord clutter and keeping your effects rig looking sharp. Not to mention our unique, removable mic mount for our MC-05 shaft designs. The biggest change in the GSP-500-DLX is that we've swapped our Hybrid Series 2.0 Soft Case for a well-constructed, air travel ready hard case that's built to protect your sonic treasures from the rigors of the road- and the sky!



### Cable Management

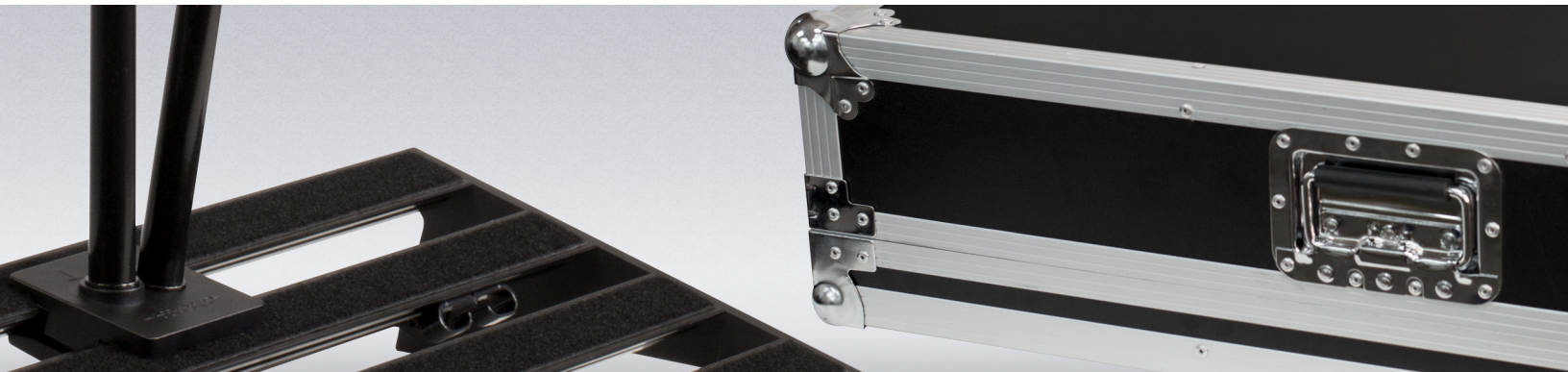
Integrated cable management clips.

### Power Supply Clamps

Two universal power supply mounting systems.

### Construction

Slat style system for mounting pedals.



### Mic Mount

Removable mic mount for the MC-05 mic shaft (0° or 10° tilt).

### Anvil Style Road Case

The GSP-500-BK ships in an anvil style road case, that attaches to the pedalboard, allowing you to simply remove the lid and plug in during setup. Recessed latches ensure the locking mechanism doesn't get roughed up in transit.

### GSP-500-DLX Specs

- Part Number: 17841
- Pedal Surface Width: 24"
- Pedal Surface Depth: 14.375"
- Front Height: .938"
- Rear Height: 4.375"
- Rail Width: 1.875"
- Wire Routing Slot Width: 1.313"
- Power Supply Clamp Range: .5" - 2.5"
- Pedal Surface Area: 345 sq. in.
- Weight: 28 lbs.