

POWER

The Pork Loin can be powered by a single 9V battery or with a Dunlop ECB-003 external DC power supply. The power input is a 5.5mm x 2.1mm jack with the positive voltage on the outer sleeve. Using an external power supply will disconnect the battery. Disconnect the input jack to preserve battery life when not in use. The pedal will lock into bypass mode when it is time to change the battery. It also includes power protection circuitry to prevent damage from AC power supplies.

SPECIFICATIONS

INPUT IMPEDANCE.....> 1M Ω

OUTPUT IMPEDANCE.....< 25k Ω

SIGNAL TO NOISE RATIO

(all controls at MID position).....> 90dBV 'A' Weighted

BYPASS.....True Bypass

DIMENSIONS...4-25/32" x 3-3/4" x 1-3/4"

WEIGHT.....14oz.

CURRENT DRAW.....16.5mA (9V DC)

POWER SUPPLY.....Standard 9V battery,
Dunlop ECB-03 AC Adapter, Dunlop DC Brick,
or CAE MC-403.

*0dBV = 1Vrms

Features: heavy-duty footswitch with quiet relay-based true bypass, blue LED indicator, 5.5mm x 2.1mm power jack with AC protection, easy access non-detachable battery door, super-duty 0.09" aluminum anodized chassis, high grade components, great tone and cool name.



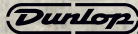
**pork
loin**TM

WAY HUGETM
BY GEORGE TRIPPS

WHE-201

**Pork Loin instruction
manual**

LIVE TO PLAY LIVE[®]



JIMDUNLOP.COM

wayhuge.com

DUNLOP MANUFACTURING, INC. P.O. BOX 846 BENICIA, CA 94510 U.S.A.
TEL: 1-707-745-2722 FAX: 1-707-745-2658 WWW.JIMDUNLOP.COM

92503006764revB

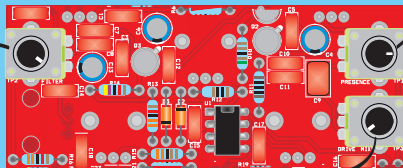
With a wide range of dynamic tones from supple and clear to warm and punchy!

The Pork Loin's amazing features and superior functionality distinguish it from the mass of clones on the market today!

The Pork Loin incorporates two distinct tonal pathways that are blended together—a modern soft clipping overdrive and a modified classic British preamp for clean. At the heart of the Pork Loin's overdrive path is a soft clipped BiFET gain stage with a low pass filter TONE control, rounded out by a CURVE function that gives the user freedom to fine-tune corner frequencies. The VOLUME control regulates the masses of pork power that exude from its space age circuitry, leaving room for the CLEAN control to blend in its warm glistening clean tones. Additionally, the Pork Loin has three internal mini controls for fine-tuning the pedal to your guitar rig.

PORK LOIN INTERIOR DRAWING:

(UNSREW THE 4 RUBBER FEET TO ADJUST THE INTERNAL TONE CONTROLS)



FILTER - ADJUSTS THE CLEAN PREAMP TONAL SPECTRUM

PRESENCE - TWEAKS THE HIGH END ON THE OVERDRIVE

DRIVE MIX - CONTROLS THE MIX OF THE OVERDRIVE. TURN THIS ALL THE WAY DOWN TO GET ONLY CLEAN BRITISH PREAMP TONES WITH NO OVERDRIVE.

VOLUME - REGULATES THE MASSES OF PORK POWER THAT EXUDE FROM ITS SPACE AGE CIRCUITRY

TONE - LPF THAT ROLLS OFF HIGH END. SETTING IT FULL CLOCKWISE REMOVES IT FROM THE SIGNAL PATH.

OVERDRIVE - EMANATES SMOOTH SOFT CLIPPED OVERDRIVE WAVES

CLEAN - BLENDS IN WARM BRITISH PREAMP GLISTENING CLEAN TONES

FOOTSWITCH - TOGGLES THE EFFECT ON / BYPASS (BLUE LED INDICATES EFFECT IS ON)

CURVE - FOR FINE-TUNING CORNER FREQUENCIES OF THE OVERDRIVE



pork loin™

SOFT CLIP INJECTION

WAY HUGE
BY GEORGE TRIPPS