



KEF UNI-Q® LOUDSPEAKERS

Ci160.2QS/QR

Information Sheet



These are the Ci160.2QS and Ci160.2QR. Like KEF's smaller version Ci130QS/QR these share the same Uni-Q® driver array technology that provides your living space with an expansive soundscape, excellent bass extension thus creating the perfect sound stage.

You have the versatility of either placing square speakers in the walls or round speakers in the ceiling and, thanks to KEF's

simple and ingenious screw down clamping system, you'll also find them easy and quick to install.

Designed with moisture-resistant fixings allowing placement in the harshest environments such as bathrooms or even outside (under eaves).

The Ci160.2QS and Ci160.2QR give genuine performance - and great value.

Features and Benefits:

The 2-way Ci160.2QS and Ci160.2QR combine 100W power handling and 89dB sensitivity, for a maximum output of 108dB. A 160mm (6½") polypropylene cone bass/mid unit with a coincident mounted 25mm (1") soft dome, ferrofluid cooled high-frequency unit gives superb off-axis dispersion characteristics.

The bezel and grille can be painted or covered by fabric to match the interior décor.

Ci series
custom installation speakers

KEF®

KEF Audio (UK), Eccleston Road, Tovil, Maidstone, Kent, ME15 6QP U.K. Telephone: + 44 (0) 1622 672261. Fax: + 44 (0) 1622 750653

www.kef.com

KEF America, 10 Timber Lane, Marlboro, New Jersey, 07746 USA. Telephone: + 1 732 683 2356. Fax: + 1 732 683 2358

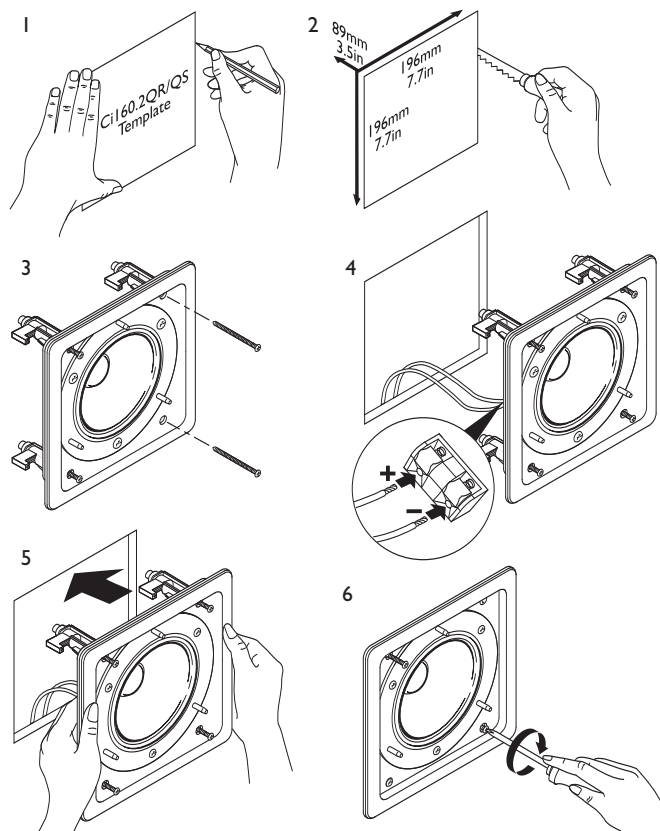
www.kefamerica.com

GP Acoustics GmbH, Heinrichstraße 51, D-44536 Lünen, Deutschland. Telephone: +49 (0) 231 9860-320. Fax: +49 (0) 231 9860-330.

www.kefaudio.de

Ci160.2QS/QR

Installation



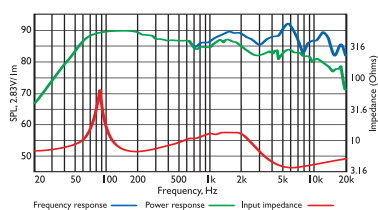
Architectural specifications:

The Ci Series Ci160.2QS and Ci160.2QR comprise a Uni-Q® coincident mounted 25mm soft dome ferrofluid cooled tweeter with 160mm white polypropylene bass/mid unit. Performance should meet or exceed the following criteria: frequency response 1 metre on-axis with swept

sinewave shall be 60Hz to 20kHz, sensitivity shall be at least 89dB for 2.83V@1m. The impedance and maximum power shall be 100W at 8 ohms. The Ci Series Ci160.2QS and Ci160.2QR is best suited where high quality music and speech reinforcement applications require hi-fi performance such as:

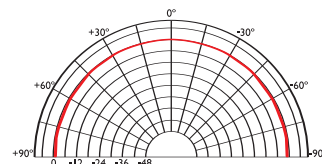
- Multi Room systems.
- Home Theatre systems.
- Lounges, Bars, Boutiques.
- Boardrooms & Offices.
- Airports, Convention Centres, Hotels.
- Live Theatre/Concert Hall fill-in.
- Houses of Worship.
- Sports Arenas.

Frequency / Power response, Input impedance

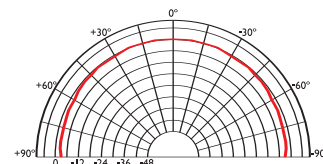


Polar graphs

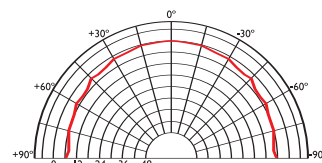
500Hz



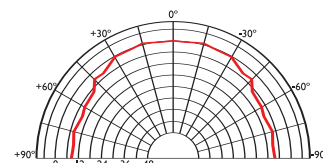
1kHz



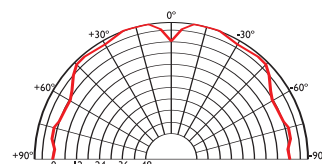
2kHz



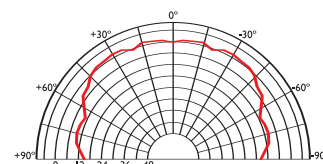
4kHz



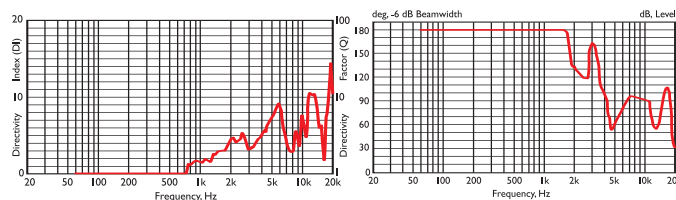
8kHz



16kHz



Directivity Index / Beamwidth



Specifications

Frequency range	60Hz - 20kHz
Sensitivity (2.83v @ 1m)	89dB
Rec. amplifier power	10 - 100W
Nominal Impedance	8Ω (min. 3.7Ω)
Crossover Frequency	2.8kHz

Enclosure material	N/A
Terminals	spring terminals up to Ø2.5mm (0.1") conductor
Dimensions (H x W x D)	220 x 220 x 93 mm, 8.7 x 8.7 x 3.7 in.
Net weight	1.5kg (3.3lbs)