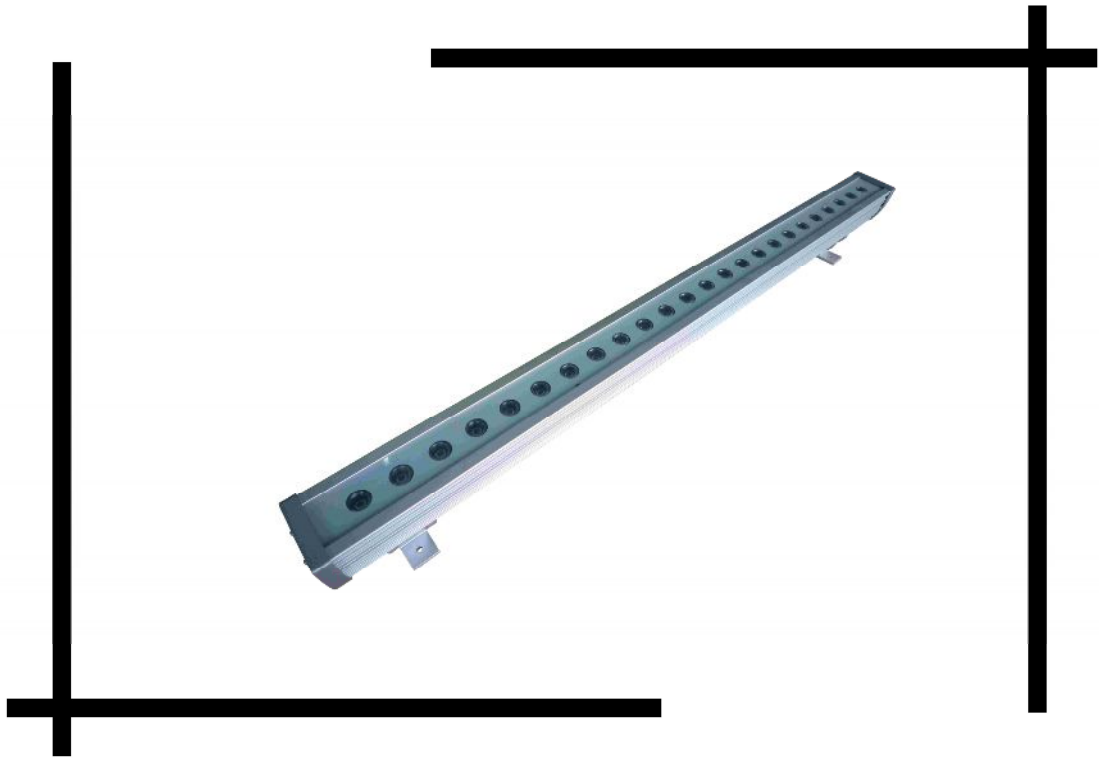


**INVOLIGHT**

**OUTDOOR DMX 3W LED BAR**

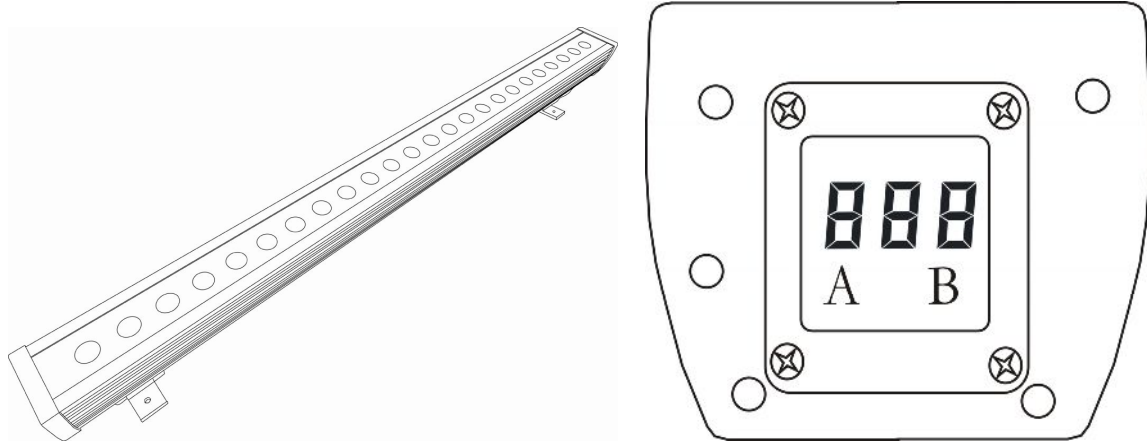


**LED BAR 350**

**USER MANUAL**

# Outdoor DMX 3W LED BAR, 24\* 3W,1M

This outdoor DMX LED BAR can make very nice and bright effect as an architectural wall wash or for performance stages where traditional stage lighting emit a lot of heat onto performers. Very smooth field with rich palettes of color created by mixing the Red, Green and Blue LEDs



## SPECIFICATION

Input power: AC110- 240V/50-60HZ

Power consumption: 72W

Leds: 24 \*3W(R8,G8,B8)

Beam angle: 25degree

IP rate: IP 65

Housing: aluminum. 1000× 76 × 75mm

Housing color:Silver(Black available)

Weight: 4.7 kgs

Built-in programs, auto-run mode, DMX mode, M/S mode, static color

Two DMX work modes

LED display for easier operation

## OPERATION

### 1, Built-in programs:

Press A button (Mode/setup) for 3 seconds until it shows: **P.0 1**, then now it is built-in programs mode, you can choose 7 different built-in programs by pressing B button(from P.01 to P.07).

P01 is for static color, press A button, then it shows: 1-r, then you can choose different colors by pressing B button. You can set the color grade by press A and B button (00-51)

Press A button, it shows S01, then you can set the running speed (S01-S100 or SFL**SFL**) for the programs.

Press A button, when it shows F00**F00**, then you can set the flash frequency by pressing B button.

### 2, Auto run mode:

Press A button (Mode/setup) for 3 seconds until it shows: AUT**AUT**, press A button to activate S00-S100(SFL), then you can set the running speed by pressing B button; press A button to activate F00-F99, set the flash frequency by pressing B button; press A button to activate T00-T99, set the fading time by pressing B button.

### 3, DMX mode:

Press A button (Mode/setup) for 3 seconds until it shows: 001**00 1**, this DMX mode, you can set the DMX address by B button. Press A button, it will show d.P1**d.P 1**, press B button to select d.P1 or d.P2.

## DMX protocol

### DMX mode1: dP1

CH1	CH2	CH3	CH4	CH5
R	G	B	RGB	Flash
OFF	OFF	OFF		1-5
0-255 R dimming	0-255 G dimming	0-255 B dimming	0-255 RGB dimming	0,6-255 Flash

### DMX mode2: dP2

CH1			CH2	CH3
NO.	DMX value	FUNCTION	SPEED	FLASH
1	0	OFF	SPEED 0—255	FLASH 0—255
2	1--50	PR01 color change		
3	51--101	PR02 color jump		
4	102--152	PR03 red fading		
5	153--203	PR04 green fading		
6	204--255	PR05 blue fading		

## **4, M/S mode:**

Press A button (Mode/setup) for 3 seconds until it shows: SLA**SLA**, Then this unit is slave which can be connected with the master.

**INVOLIGHT**