



Surround Dongle for Sennheiser Gaming headsets

SENNHEISER

The Sound Games Are Made Of



EQUALIZER

OFF | MID



Инструкция по
эксплуатации

Chapter overview

1 Scope of delivery

Комплект поставки

3 Adjusting the PC sound settings

Адаптация настроек звука на ПК

5 Cleaning the product

Очистка изделия

2 Installing the driver & connecting the Surround dongle

Установка драйвера и подключение Surround Dongle

4 Changing settings

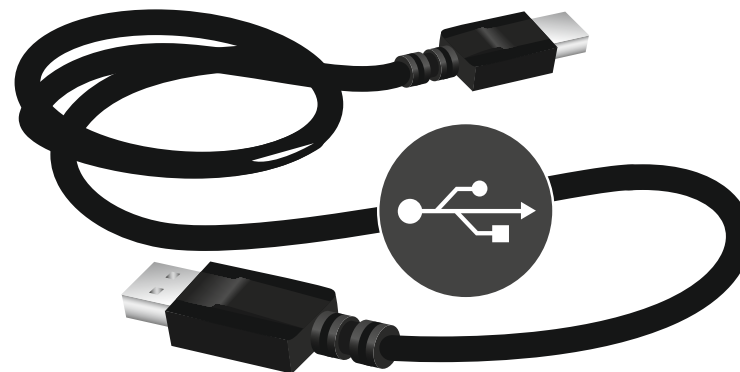
Изменение настроек



Surround Dongle



USB cable



Quick
Guide



Safety
Guide



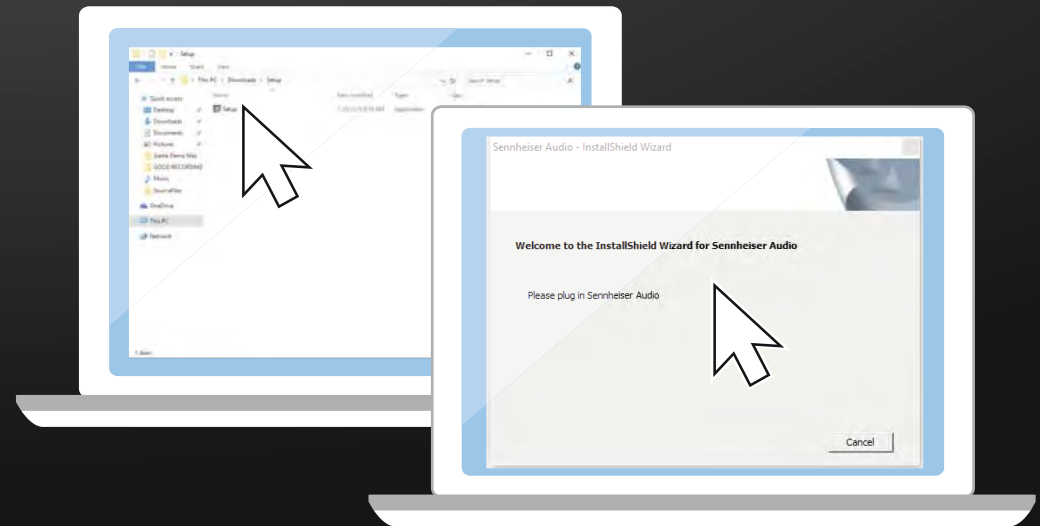
Manufactured under license from Dolby Laboratories.
Dolby and the double-D symbol are trademarks of
Dolby Laboratories.

Download newest driver



Please visit our website
and download the newest driver
sennheiser.com/gaming-downloads

Open setup file



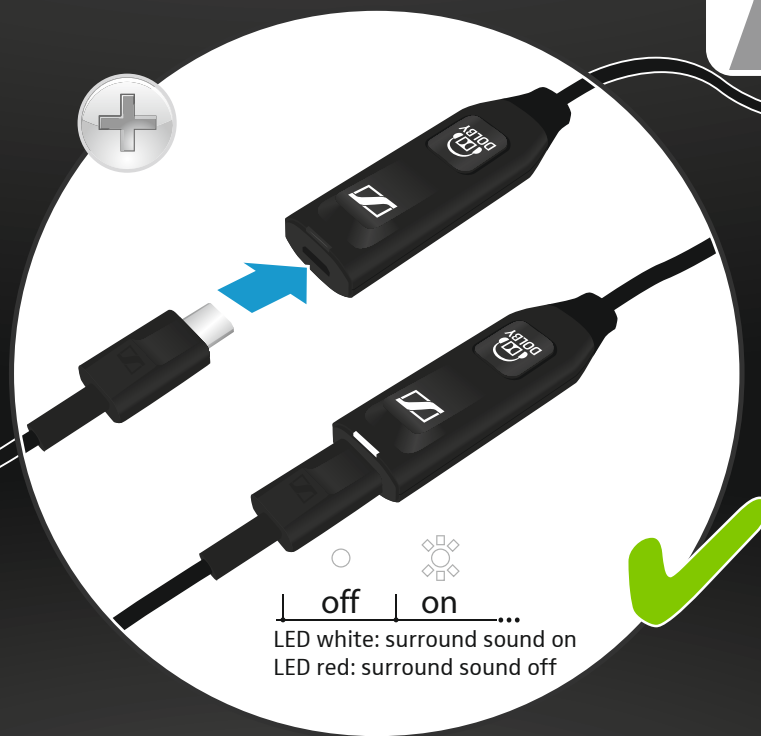
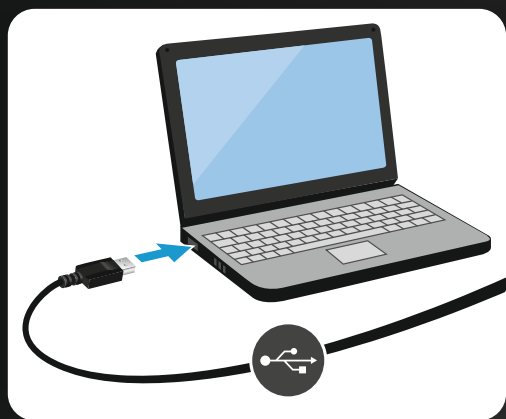
1. Double click the setup file.
2. Follow the instructions.
How to plug in "Sennheiser audio"?
See next two pages.



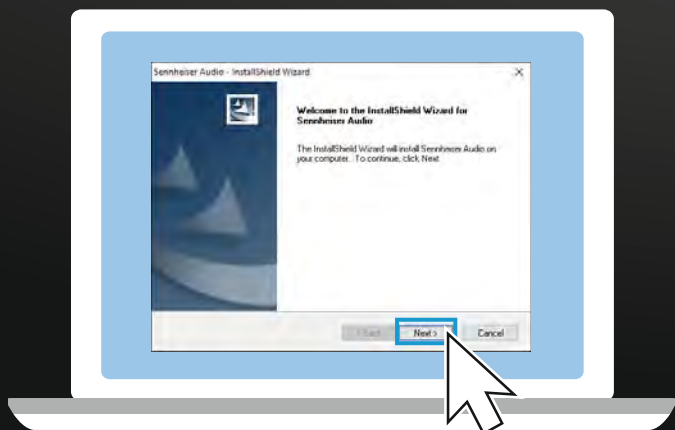
Connect a headset



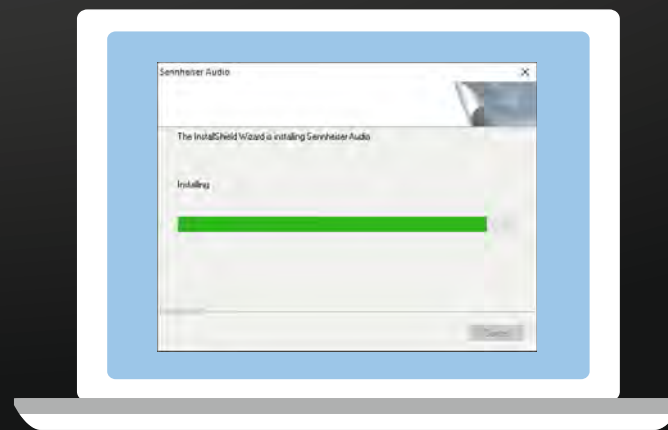
Connect to a PC



Follow the Install Wizard



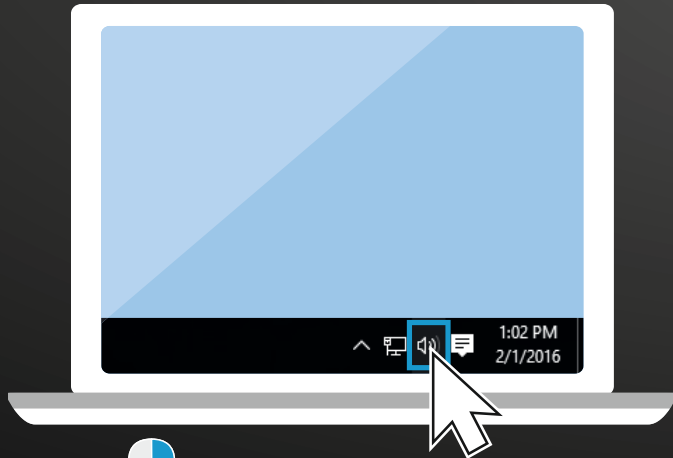
1. Click "Next" to continue the installation.



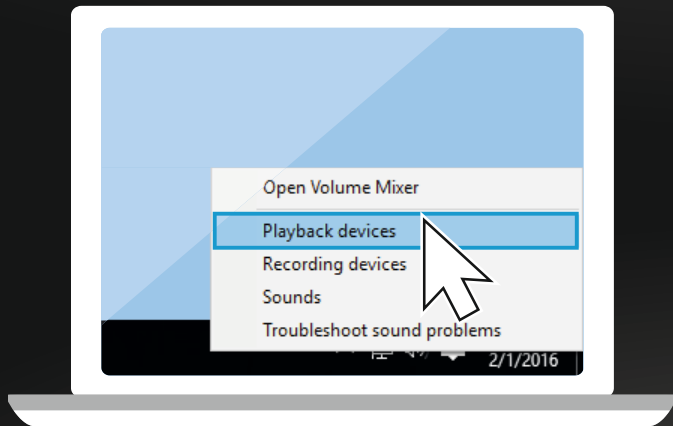
2. Click "Finish" to close the Window.

Завершение установки

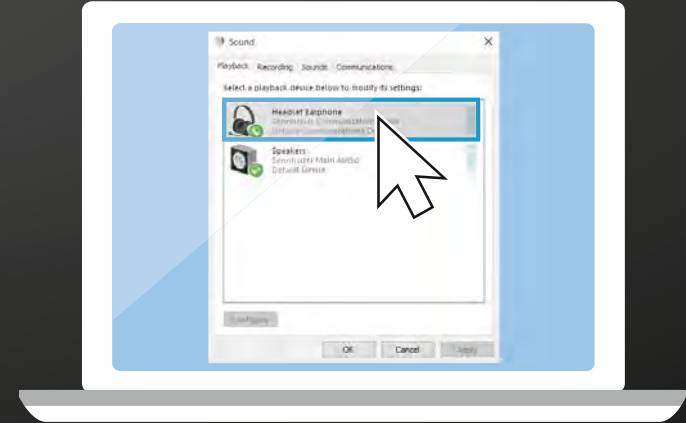
3 Adjusting PC settings



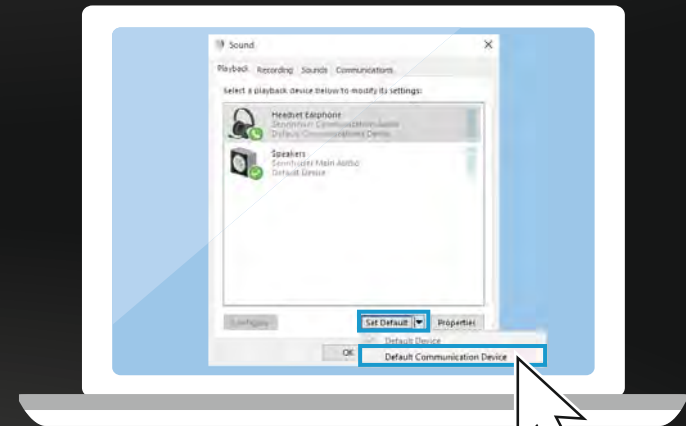
1. Right-click the Audio icon.



2. Select "Playback devices".

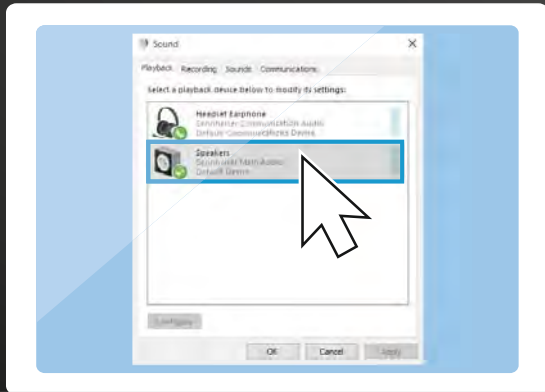


3. Select "Headset Earphone" "Sennheiser Communication Audio".

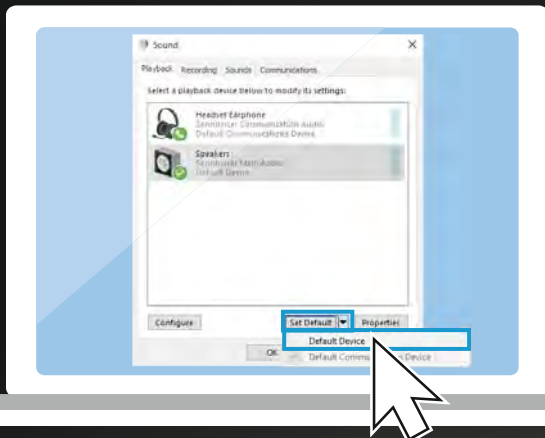


4. Select "Set Default" and "Default Communication Device".

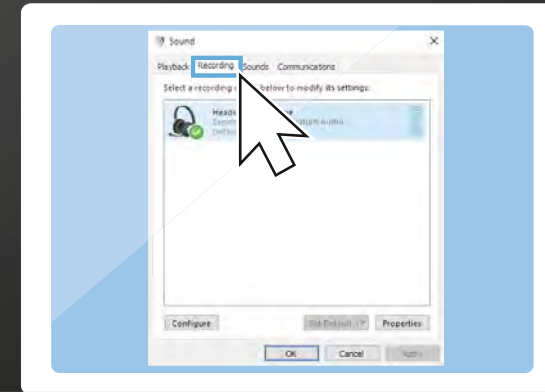
3 Adjusting PC settings



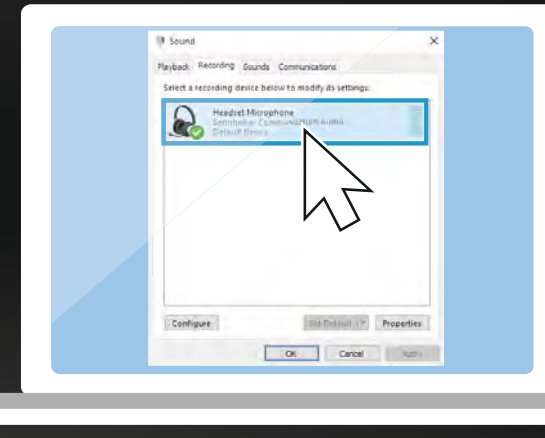
5. Select "Speakers" "Sennheiser Main Audio".



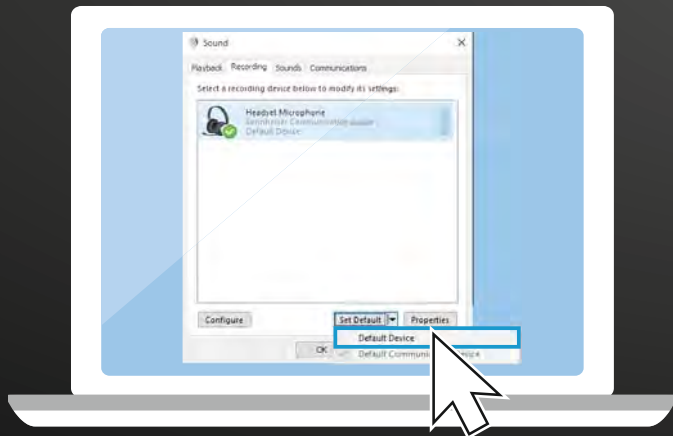
6. Select "Set Default" and "Default Device".



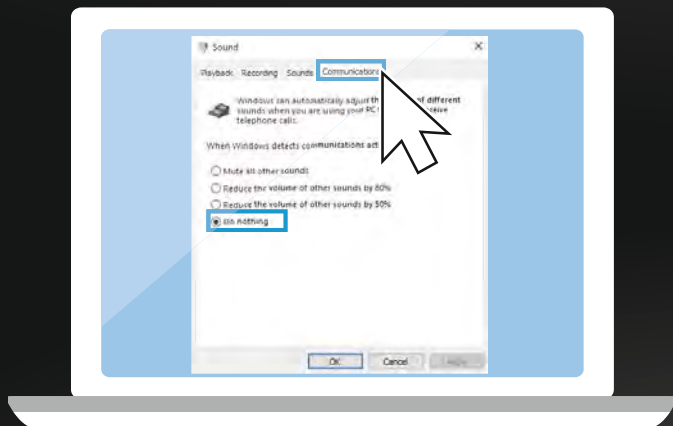
7. Select tab "Recording".



8. Select "Sennheiser Communication Audio".

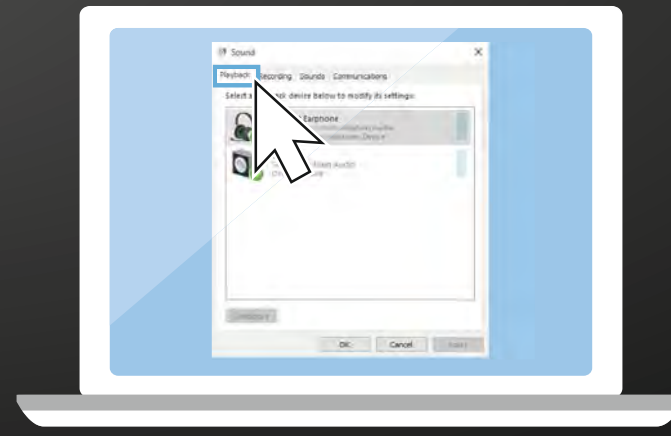


9. Select "Default Device".

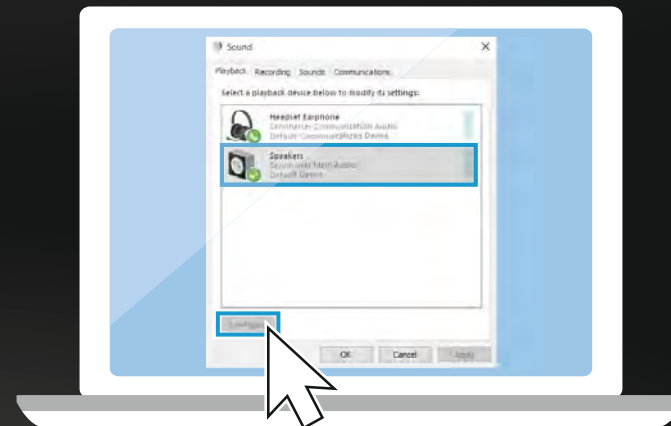


10. Select tab "Communications".
11. Select "Do nothing".

7.1 surround sound

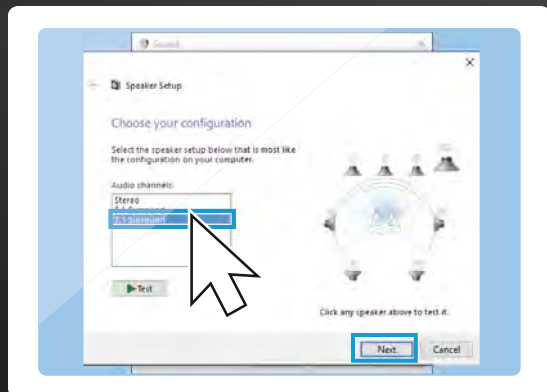


12. Select tab "Playback".

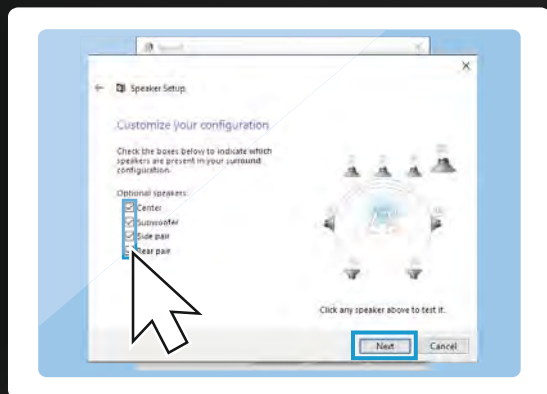


13. Select Speakers "Sennheiser Main Audio".
14. Click "Configure".

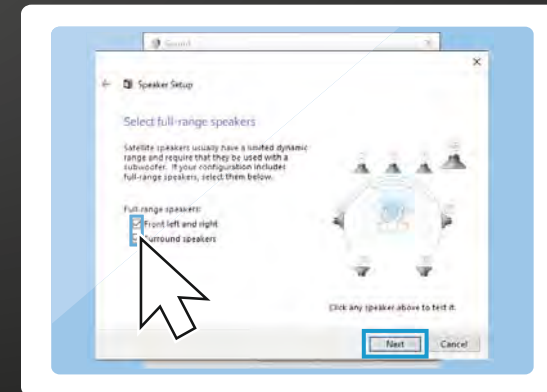
3 Adjusting PC settings



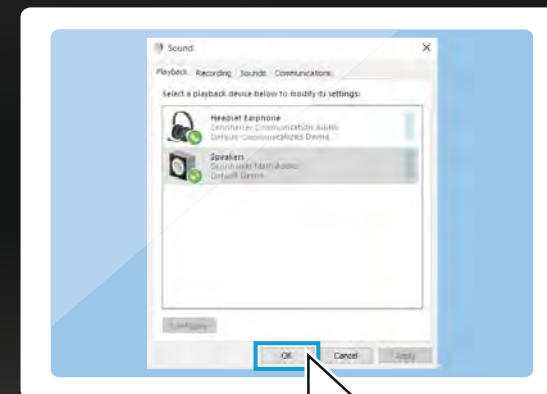
15. Select "7.1 Surround" and click "Next".



16. Activate all options and click "Next".

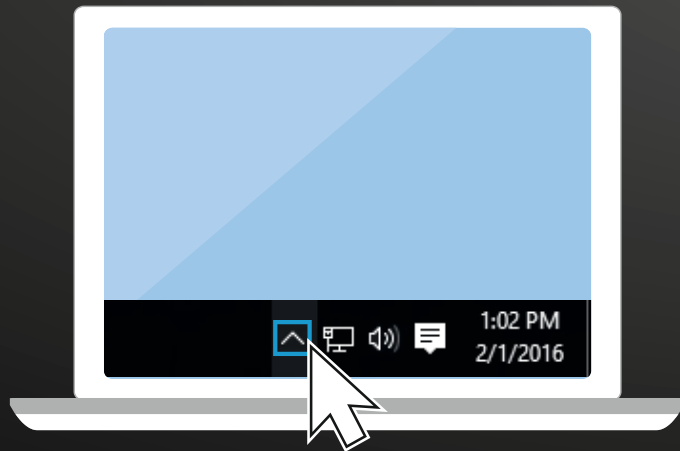


17. Activate all options and click "Next" to close "Speaker Setup".

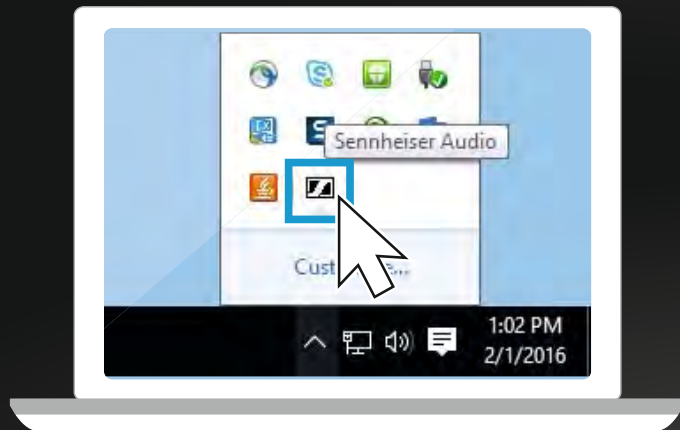


18. Click "OK" to save settings and close the window.

Open the Sennheiser software



1. Click the small arrow in the taskbar.

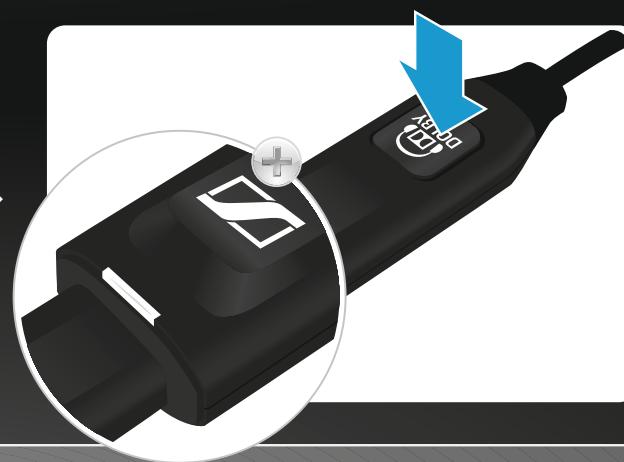


2. Click the "Sennheiser Audio" logo.





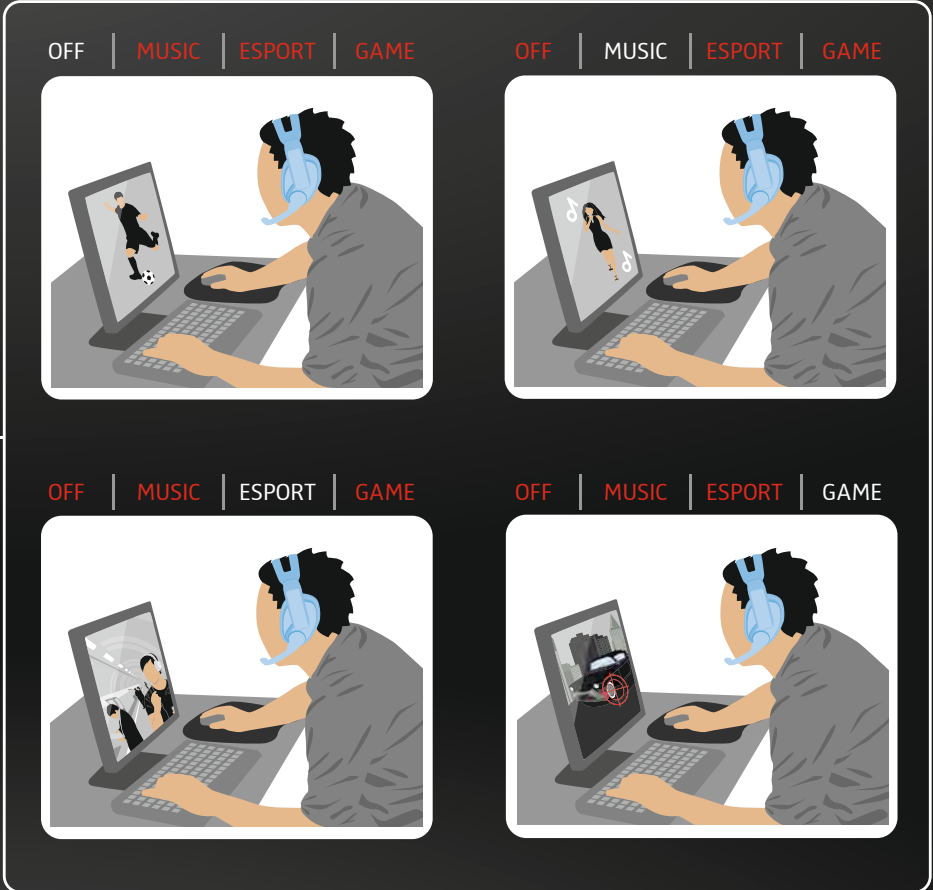
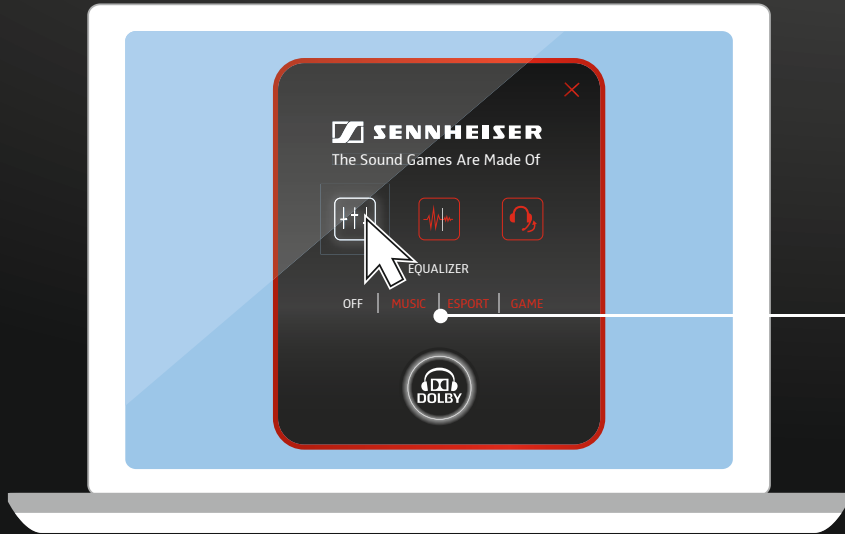
Click or press the Dolby Headphone icon



Включение и выключение объемного звучания

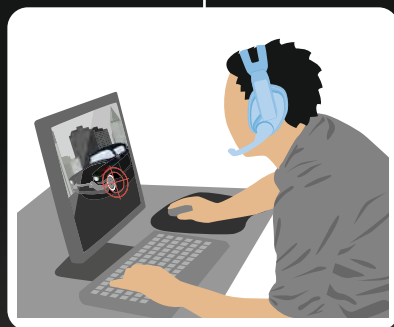
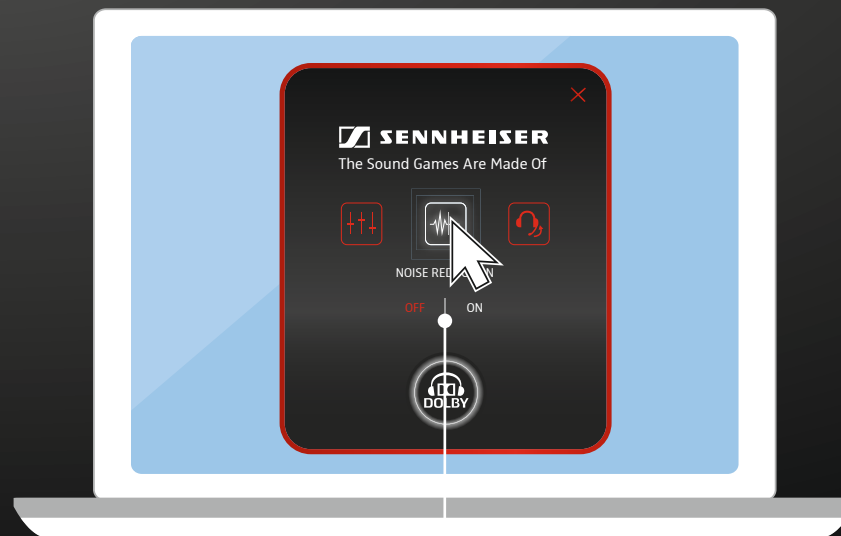
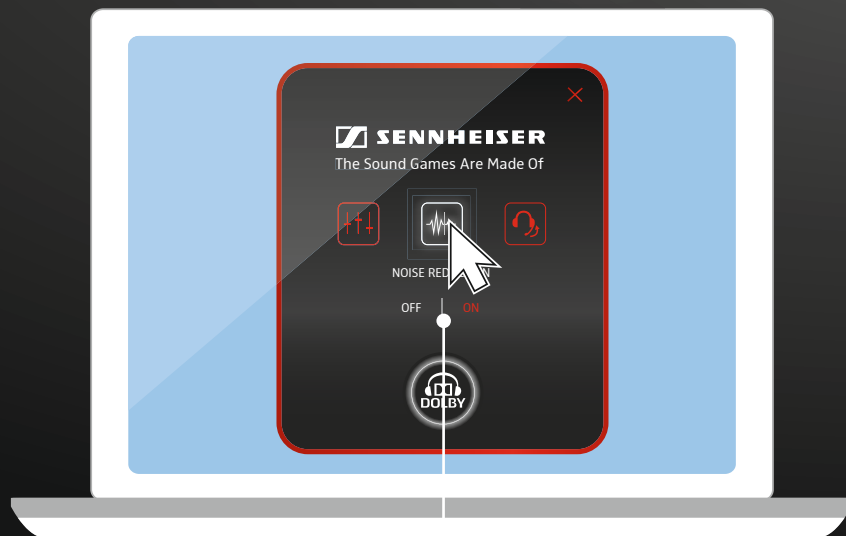


Click the equalizer icon





Click the Noise reduction icon



Noise reduction OFF

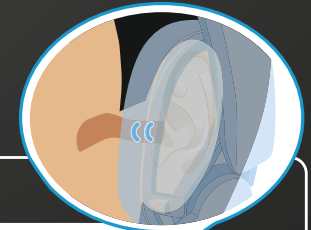
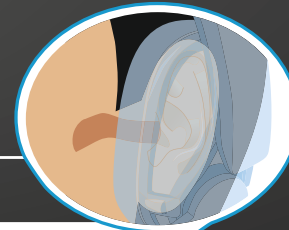


Noise reduction ON

Включение и выключение подавления шумов

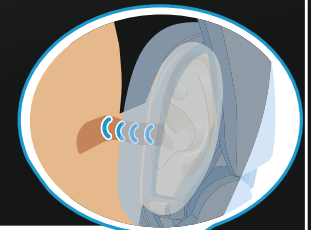
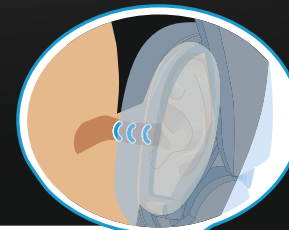


Click the headset icon



OFF | LOW | MID | HIGH

OFF | LOW | MID | HIGH

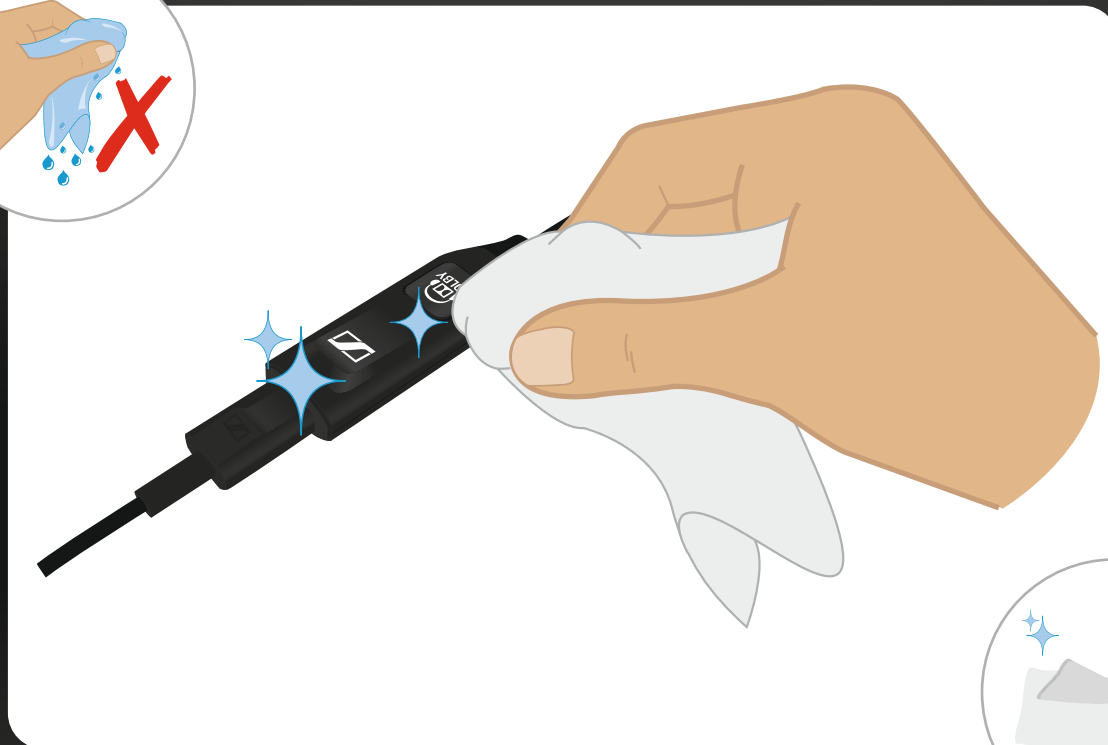


OFF | LOW | MID | HIGH

OFF | LOW | MID | HIGH

Изменение громкости посторонних звуков

Clean with a soft & dry cloth



Please visit our website for further information & tutorials:



sennheiser.com/gaming-downloads

Please contact our product service support:



sennheiser.com/service-support



<https://www.clife.ru/goods/sennheiser-pc-373d/>