

**Alctron** 爱克创

## K5 USB 电容录音话筒

K5 USB condenser studio microphone



用户手册

Owner's Manual



# 目录





## English

1. IMPORTANT SAFETY INSTRUCTIONS.....	2
2. GENERAL INTRODUCTION.....	3
3. FEATURES.....	3
4. RACK MOUNTING.....	3
5. XP PRIMARY SETTING.....	4
6. WIN7 PRIMARY SETTING.....	5
7. RECODING SOFTWARE SETTING.....	6
8. SPECIFICATION.....	6

## 中文

1. 安全须知.....	7
2. 产品介绍.....	8
3. 特征.....	8
4. 支架安装.....	8
5. XP的初步设置.....	9
6. WIN7的初步设置.....	10
7. 录音软件设置.....	11
8. 产品参数.....	11

## IMPORTANT SAFETY INSTRUCTIONS

	<p><b>CAUTION</b></p> <p>RISK OF ELECTRIC SHOCK DO NOT OPEN RISQUE DE CHOC ELECTRIQUE NE PAS OUVRIR</p> <p>CAUTION: TO REDUCE THE RISK OF ELECTRIC SHOCK DO NOT REMOVE COVER (OR BACK) NO USER-SERVICEABLE PARTS INSIDE REFER SERVICING TO QUALIFIED PERSONNEL</p> <p>ATTENTION: POUR EVITER LES RISQUES DE CHOC ELECTRIQUE, NE PAS ENLEVER LE COUVERCLE AUCUN ENTRETIEN DE PIECES INTERIEURES PAR L'USAGER. CONFIER L'ENTRETIEN AU PERSONNEL QUALIFIE.</p> <p>AVIS: POUR EVITER LES RISQUES D'INCENDIE OU D'ELECTROCUTION, N'EXPOSEZ PAS CET ARTICLE A LA PLUIE OU A L'HUMIDITE</p>	
		
		

The lightning flash with arrowhead symbol within an equilateral triangle, is intended to alert the user to the presence of uninsulated dangerous voltage within the product's enclosure, that may be of sufficient magnitude to electric shock to persons. Le symbol clair avec point de flèche à l'intérieur d'un triangle équilatéral est utilisé pour alerter l'utilisateur de la présence à l'intérieur du coffret de voltage dangereux non isolé d'ampleur suffisante.

The exclamation point within an equilateral triangle is intended to alert the user of the presence of important operating and maintenance (servicing) instructions in the literature accompanying the appliance. Le point d'exclamation à l'intérieur d'un triangle équilatéral est employé pour alerter les utilisateurs de la présence d'instructions importantes pour le fonctionnement et l'entretien (service) dans le livret d'instruction accompagnant l'appareil.

1. Read this manual thoroughly before using this unit.
2. Keep this manual for future reference.
3. Take notice of and comply with all warnings included in the user's manual or indicated on the appliance.
4. Follow all instructions included in this manual.
5. Do not expose this unit to rain or moisture. Avoid having water or other liquids spilled on this unit.
6. When cleaning the cabinet or other parts of this appliance, use only a dry or slightly damp soft cloth.
7. Do not block any ventilation openings or interfere with the proper ventilation of this unit. Install in accordance with the manufacturer's instructions.
8. Do not use or store near any heat sources such as radiators, heat registers, stoves, or other heat-producing appliances.
9. To avoid the risk of electrical shock, do not touch any exposed wiring while the unit is in operation.
10. Only use attachments/accessories specified by the manufacturer.
11. Unplug this unit and all connected electrical equipment during lightning storms or when left unused a long period of time.
12. Refer all servicing to qualified service personnel. Servicing is required when the appliance has been damaged in any way or fails to operate normally.

**WARNING: To reduce the risk of fire or electric shock, do not expose this unit to rain or moisture**

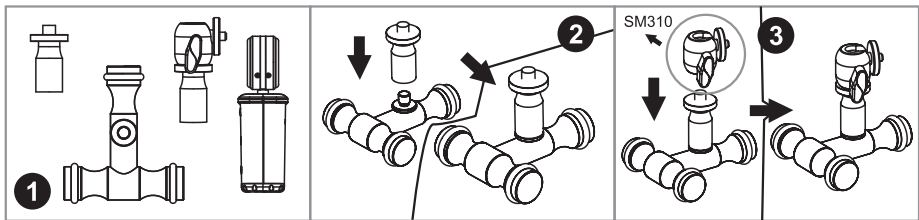
## GENERAL INTRODUCTION

K5 is a professional USB condenser studio microphone. 16mm electrets capsule provides outstanding and wide range sounds. K5 has a perfect cardioids pick-up pattern, standard and general-used USB port. It can be used without installing any drive software when operating in the Windows system and the computer systems. Moreover, it can identify the recording equipments mac automatically. It is a perfect plug-and-play USB condenser microphone, which opens up possibility for anyone who records audio from podcasters, journalists, students and multimedia presentation.

## FEATURES

- \* Universal USB connector;
- \* 16mm high quality electrets condenser;
- \* Smooth and delicate surface;
- \* Volume fader on the side of microphone;
- \* Space-saving.

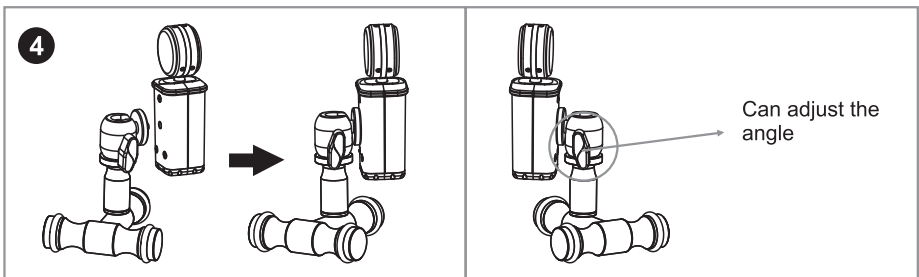
## RACK MOUNTING



Component

Firstly, switch the strut into setting

Secondly, switch the SM310 into strut



Finally, switch the mic back into SM310, and then you finish the installment.

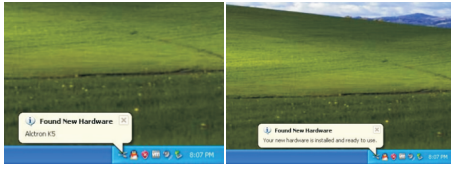
Note: If you want to connect microphone to other struts, you just need to switch SM310 into the strut.



# PRELIMINARY SET UP WITH XP

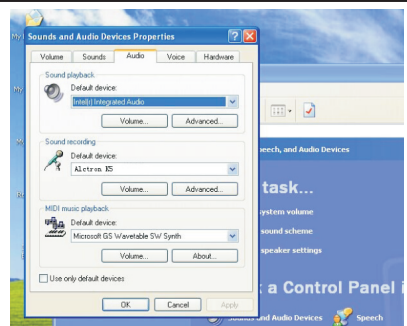
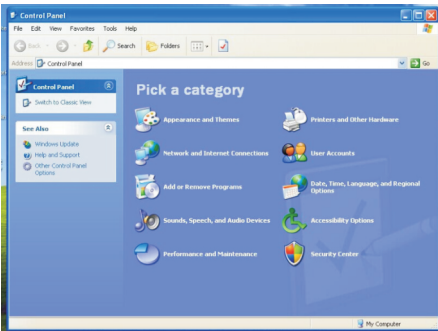
1. Plug the free end of the USB cable into the USB port on your computer. The microphone's blue LED light will illuminate, indicating the mic is receiving power. Your computer will automatically recognize the USB device and install a driver.

2. The first time you plug the K5 into a USB port (please choose 3.0 USB connector, not 2.0), a balloon will pop up---“found new hardware”. After installing, another balloon will pop up---“your new hardware is installed and ready to use”.

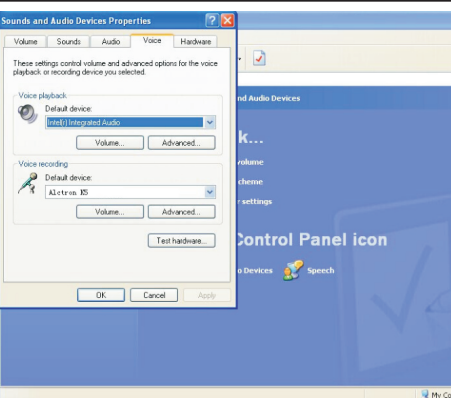


3. Clicking the start button, clicking control panel

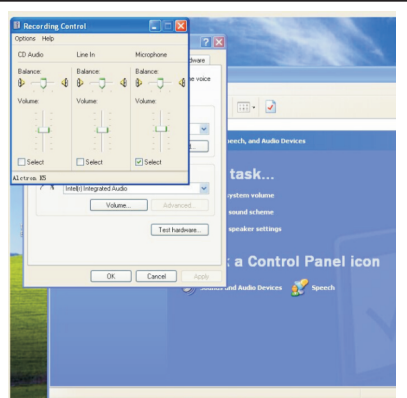
4. Clicking sounds, speech, and audio devices



5. Clicking sounds and audio devices, clicking audio then choosing Alctron K5



6. Clicking voice, clicking volume in the Voice recording section

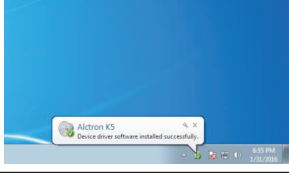


7. Sliding the icon in the microphone section to adjust the volume

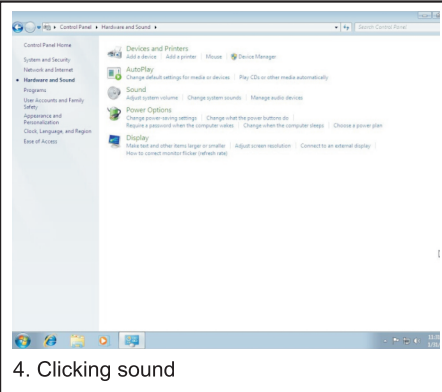
# PRELIMINARY SET UP WITH WIN7

1. Plug the free end of the USB cable into the USB port on your computer. The microphone's blue LED light will illuminate, indicating the mic is receiving power. Your computer will automatically recognize the USB device and install a driver.

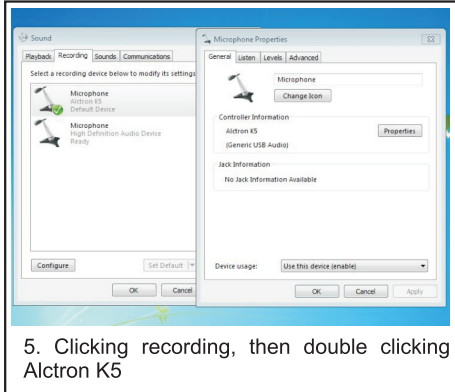
2. 1.The first time you plug the K5 into a USB port (please choose 3.0 USB connector, not 2.0), a balloon will pop up---“Device driver software installed successfully”.



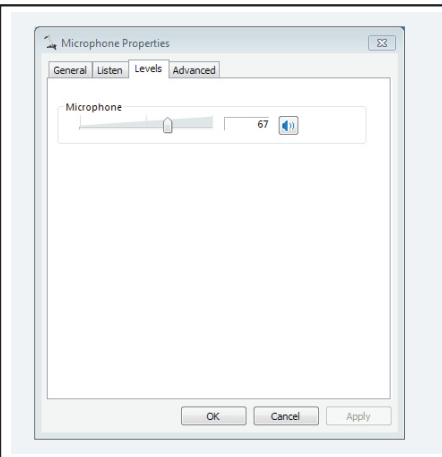
3. Clicking the start button, clicking control panel



4. Clicking sound







5. Clicking recording, then double clicking Alctron K5



6. Clicking levels, clicking icon to adjust the volume



## 安全须知

	<p><b>CAUTION</b></p> <p>RISK OF ELECTRIC SHOCK DO NOT OPEN RISQUE DE CHOC ELECTRIQUE NE PAS OUVRIR</p> <p>CAUTION: TO REDUCE THE RISK OF ELECTRIC SHOCK DO NOT REMOVE COVER (OR BACK) NO USER-SERVICEABLE PARTS INSIDE REFER SERVICING TO QUALIFIED PERSONNEL</p> <p>ATTENTION: POUR EVITER LES RISQUES DE CHOC ELECTRIQUE: NE PAS ENLEVER LE COUVERCLE. AUCUN ENTRETIEN DE PIECES INTERIEURES PAR L'USAGER. CONFIER L'ENTRETIEN AU PERSONNEL QUALIFIE AVIS: POUR EVITER LES RISQUES D'INCENDIE OU D'ELECTROCUTION, N'EXPOSEZ PAS CET ARTICLE A LA PLUIE OU A L'HUMIDITE</p>	
		
		

The lightning flash with arrowhead symbol within an equilateral triangle, is intended to alert the user to the presence of uninsulated dangerous voltage within the product's enclosure, that may be of sufficient magnitude to electric shock to persons. Le symbol clair avec point de flèche à l'intérieur d'un triangle équilatéral est utilisé pour alerter l'utilisateur de la présence à l'intérieur du coffret de voltage dangereux non isolé d'ampleur suffisante.

The exclamation point within an equilateral triangle is intended to alert the user of the presence of important operating and maintenance (servicing) instructions in the literature accompanying the appliance. Le point d'exclamation à l'intérieur d'un triangle équilatéral est employé pour alerter les utilisateurs de la présence d'instructions importantes pour le fonctionnement et l'entretien (service) dans le livret d'instruction accompagnant l'appareil.

1. 使用本机前请仔细阅读本手册。
2. 请将本手册供将来参考。
3. 请严格遵循用户手册或产品上的警告提示操作
4. 按照本手册中的所有指令。
5. 请勿将本机遭受雨淋或受潮。避免有水或其他液体泼洒在本机上。
6. 本设备的机壳和其它部件清洗时，只能使用干或微湿的软布。
7. 不要阻塞任何通风孔或干扰本机的适当通风。按照制造商的说明进行安装。
8. 不要使用或存放在任何热源附近，如散热器，电热器，炉子，或其他产生热的器具。
9. 而本产品在进行操作时，为了避免触电的危险，请勿触摸任何电线外露。
10. 仅使用制造商指定的附件 / 配件。
11. 在雷雨时或闲置了很长一段时间，拔下本机和所有连接的电源设备。
12. 如果该设备有任何的损坏或不能正常操作，因由有合格的维修人员进行。

**警告：为了减少着火或触电的危险，不要让本机遭受雨淋或受潮**

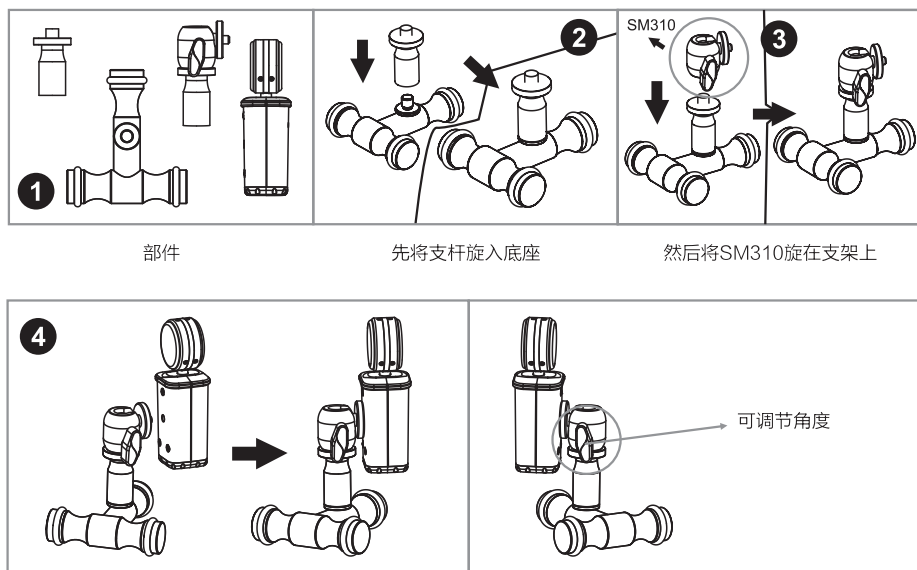
## 产品介绍

K5是一款专业的USB电容录音话筒。采用16MM驻极体音头，音质清晰，音域宽广。电容USB话筒具有心型指向性和标准的USB接口，它可以用于大部分WINDOWS系统和MAC系统，此外它自带音量调节旋钮，可调节录音音量的大小。此款USB话筒具有即插即用的特点，使其适用于个人录音爱好者、播客、记者、学生以及多媒体工作者。

## 特征

- \* 通用USB接口；
- \* 优质16MM电容音头；
- \* 表面光滑细腻；
- \* 话筒侧边有音量调节器；
- \* 体积小巧。

## 支架安装



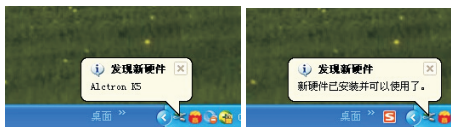
最后通过麦克风背部的螺纹将麦克风旋在支架上，  
这样麦克风安装就完成了

提示：若您想将麦克风连接到别的支架上的时候，只需直接将SM310旋入支架即可

## XP的初步设置

1.把USB 连线的另一端插入计算机上的USB 端口，话筒的蓝光LED 将会亮起，表示话筒已接通供电。您的计算机会自动识别USB 设备并安装驱动程序。

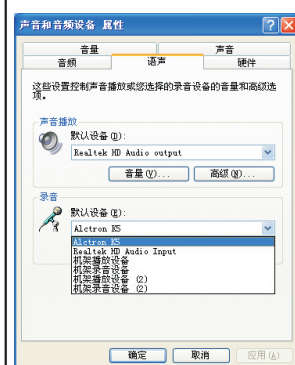
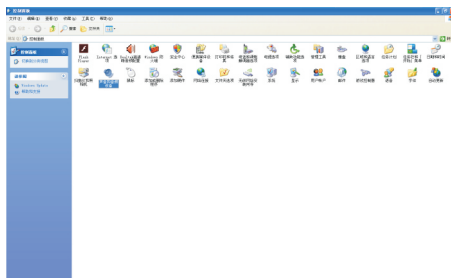
2.在你的屏幕右下方位置，会看到一个安装驱动程序软件的通知和新设备安装完成的提示。请选择USB2.0接口，USB3.0接口可能会出现识别错误。



3.开始菜单> 控制面板

首先在“开始”菜单中选择“控制面板”。

4.点击声音和音频设备



5.点击语音，选择 K5设备

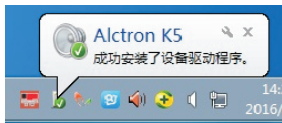


6.点击音量按钮，按住小图标上下移动即可调节声音大小。

## WIN7的初步设置

1.把USB 连线的另一端插入计算机上的USB 端口，话筒的蓝光LED 将会亮起，表示话筒已接通供电。您的计算机会自动识别USB 设备并安装驱动程序。

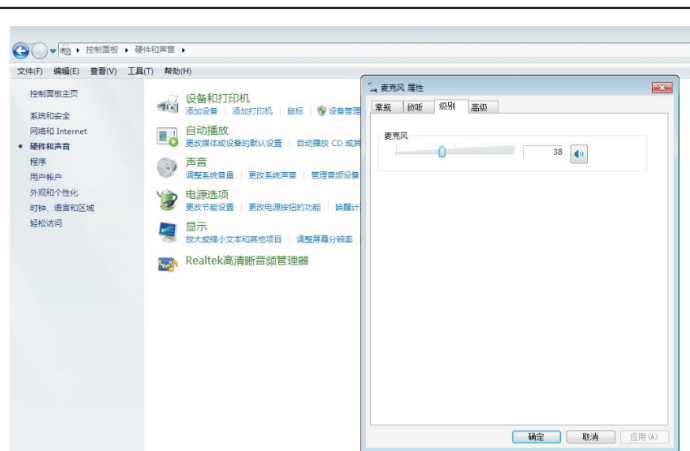
2.在你的屏幕右下方位置，会看到一个安装驱动程序软件的通知。请选择USB2.0接口，3.0接口可能会选择错误。



3.开始菜单> 控制面板> 硬件和声音  
首先在“开始”菜单中选择“控制面板”。



4. 选择“声音”，随即会弹出以下视窗，点击录制，双击K5设备。

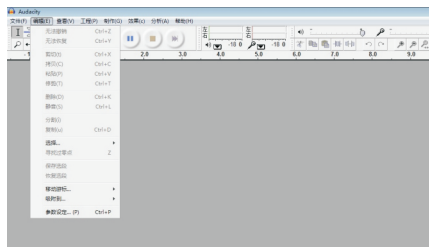


5.点击级别，点击小图标左右滑动就可调节音量大小。

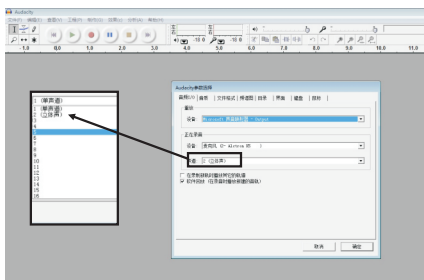
## 录音软件设置

设置步骤:

1. 以Audacity录音软件为例, 其他录音软件设置类似于Audacity。下载好软件后, 点击进入软件页面, 选择编辑-参数设定

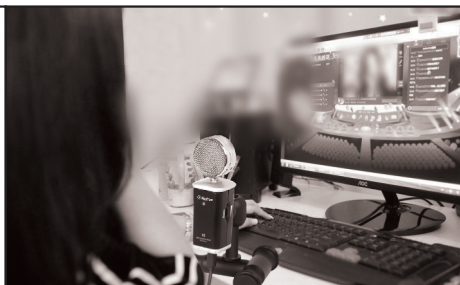
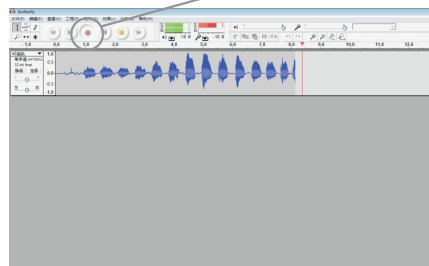


2. 会出现以下窗口, 选择跟画面一样的选项, 声道可以选择立体声或者单声道。



3. 点击红色图标, 开始录音。

红色图标



4. 当您开始录音的时候, 嘴要对准印有 "Alctron" 字样的那面。

## 产品参数

- \* 类型: USB 电容话筒
- \* 音头: 16mm驻极体音头
- \* 指向性: 心型
- \* 频率范围: 30Hz-18kHz
- \* 灵敏度: -20--- -50dB
- \* 最大声压级: 140dB(1kHz<=1%T.H.D)
- \* 接头: 安卓USB接口

奥创电子有限公司始终尽力确保最高的质量水平。必要的修改将不预先通知予以实行。因此产品的技术数据和外观可能与所述说明或插图有不同之处, 敬请谅解。