

DB-2 MULTI AUDIO CABLE TESTER

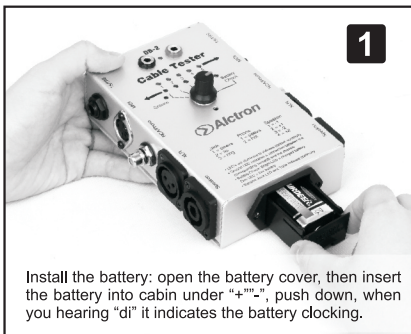
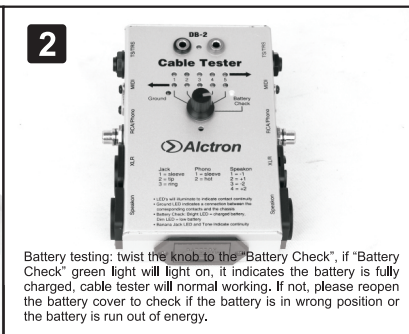
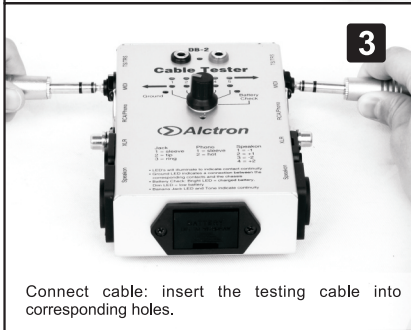
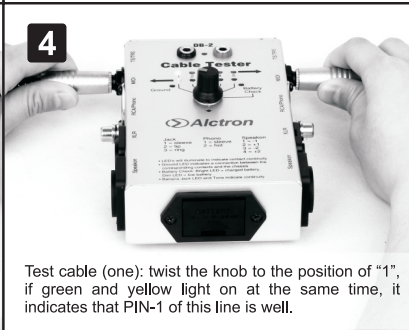
GENERAL DESCRIPTION

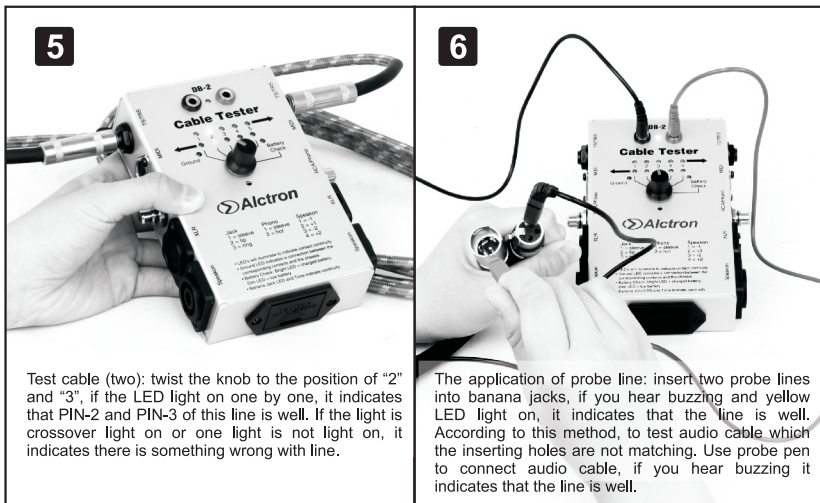
DB-2 is a kind of multi audio cable tester. Whether you are specialized in stage or recording studio installation, facing to intact stage or equipment but the equipments have no sound or the sound is distortion inexplicable. DB-2 helps you to check every cable or jack if they connecting properly (short circuit or poor contact test) to eliminate and solve the problem.

FEATURES

- * Enables quick convenient continuity cable testing for all types of cable;
- * Tests cables with all types of combinations of the following connectors: 1/4" TRS, balanced XLR, Phono/RCA, banana plug, Speakon, and 5-pin MIDI;
- * 6-way switch for selecting connections to be tested, also includes internal battery and ground Connection status checks;
- * LED's confirm each conductor continuity and connection.

DB-2 USAGE METHODS

 <p>1</p> <p>Install the battery: open the battery cover, then insert the battery into cabin under "+"/"-", push down, when you hearing "di" it indicates the battery clocking.</p>	 <p>2</p> <p>Battery testing: twist the knob to the "Battery Check", if "Battery Check" green light will light on, it indicates the battery is fully charged, cable tester will normal working. If not, please reopen the battery cover to check if the battery is in wrong position or the battery is run out of energy.</p>
 <p>3</p> <p>Connect cable: insert the testing cable into corresponding holes.</p>	 <p>4</p> <p>Test cable (one): twist the knob to the position of "1", if green and yellow light on at the same time, it indicates that PIN-1 of this line is well.</p>



Test cable (two): twist the knob to the position of "2" and "3", if the LED light on one by one, it indicates that PIN-2 and PIN-3 of this line is well. If the light is crossover light on or one light is not light on, it indicates there is something wrong with line.

The application of probe line: insert two probe lines into banana jacks, if you hear buzzing and yellow LED light on, it indicates that the line is well. According to this method, to test audio cable which the inserting holes are not matching. Use probe pen to connect audio cable, if you hear buzzing it indicates that the line is well.

TECHNICAL SPECIFICATIONS

- * Length x width x height: 140mm x 90mm x 35mm
- * Net weight: 592g
- * Gross weight: 781g

SERVICE

If your product needs servicing, follow these instructions:

1. Ensure the problem is not related to operation error or external system devices.
2. Keep this owner's manual. We don't need it to repair the unit.
3. Pack the unit in its original packaging including end card and box. This is very important. If you have lost the packaging, please make sure you have packed the unit properly. ALCRON is not responsible for any damage that occurs due to non-factory packing.
4. Ship to the ALCRON tech support center or the local return authorization.

Ningbo Yinzhou Alcron Electronics Co.,Ltd always try to guarantee and improve the quality of product, necessary modification will go on without prior notice. So the specification and appearance may be a little differ from description or illustration, hope your understanding.

ALCRON ELECTRONICS CO.,LTD No.76 SanCheng Road, XiuFeng Industrial Area,GaoQiao Town, NingBo China.
Tel:++86 574 87150672 Fax:++86 574 87157176 E-mail:info@alcon-audio.com www.alcron-audio.com

DB-2多功能音频连线测仪器





产品介绍

DB-2是一款多功能音频连线测仪器，当您从事舞台或录音棚工程安装，面对完好无损的各种舞台或设备，但却出现莫名其妙的“不出声”或者声音“异常”时，DB-2能快速帮您检测各种连线及插头是否连接正常（短路或接触不良测试），从而达到排除并解决问题的目的。

特征

- * 快速测试各种音频线；
- * 可检测的线材有：1/4"TRS, XLR, 莲花线, 香蕉插头, 音箱插头和五针MIDI线；
- * 6档旋钮来测试每个档位的连接是否完好，包括检测接地和电池电量；
- * LED灯确保线的每针是连通的。

DB-2使用方法

 <p>1</p>	 <p>2</p>
<p>安装电池：打开测线器底部的电池盖，将配送的9V电池根据电池盒上“+”“-”标记安装电池，然后推入电池盒内，然后用力往下按，听到“滴”的一声说明电池已经紧锁。</p>	<p>电池检测：将拨动旋钮拧到最右边一档检测电池，如果“Battery Check”绿色灯亮起来，表示电池供电正常，测线器能正常工作。如果不亮，请重新打开电池盒，查看电池极性是否装反或电池是否有电。</p>
 <p>3</p>	 <p>4</p>
<p>连接线材：将需要测试的线材插入测线器对应的插孔中。</p>	<p>检测线材（一）：将旋钮拧到“1”的位置，黄灯和绿灯同时亮起，表示此线的“PIN 1”连接没有问题。</p>

5



检测线材（二）：再把拨动旋钮拧到“2”和“3”的位置，如果LED灯一一对应亮起，说明这条线材的“PIN 2”和“PIN 3”连接正常。如果交叉亮或者有灯不亮说明线材连接错误。按照此步骤可以检测其它线材。

6



探测线的应用：将两条配送的探测线插入红黑两个插孔内，如果探测笔两段直接接通会出现“滴滴”的蜂鸣声并且黄色LED亮起，使用此方法可以检测在测线器上没有对应插孔的音频线，用探测笔连接对应线材端口，如出现蜂鸣声表示线材连通。

产品参数

- * 长x宽x高：140mm x 90mm x 35mm
- * 净重：592g
- * 毛重：781g

保修

如果您的产品需要维修，请按照以下说明操作：

1. 请确保不是因为操作不当或外部设备所造成。
2. 请保存好我们的说明书，返修的时候不必把说明书寄回给我们。
3. 返修的时候请用产品原来的包装箱来包装，这是非常重要的。如果你已丢失原包装，请确保您正确包装和保护好本产品。爱克创是不负责由于非原厂包装造成任何损害。
4. 运送到爱克创技术支持中心或当地的授权经销商。

奥创电子有限公司始终尽力确保和提高产品的质量水平。必要的修改将不预先通知予以实行。因此产品的技术数据和外观可能与所述说明或插图有不同之处，敬请谅解。