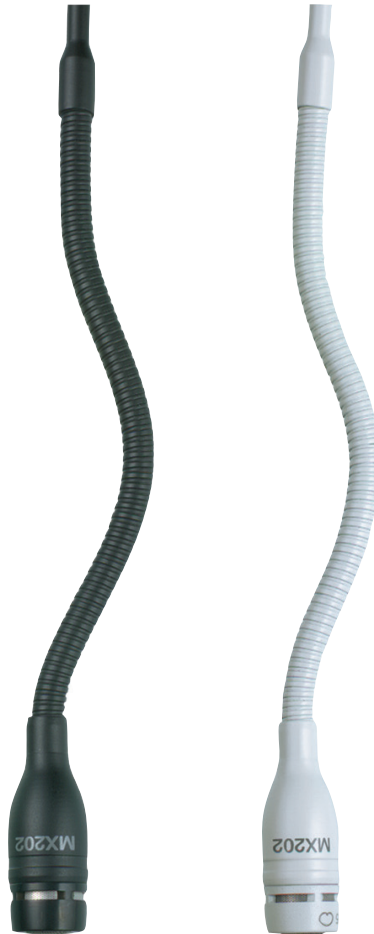


SHURE Microflex[®]

MX200 SERIES



MX200 Overhead Microphones

Shure Microflex® MX200 Series microphones are miniature electret condenser microphones designed for miking choirs and performance groups. They are typically suspended over the heads of the performers. Their high sensitivity and wide frequency range make them suitable for recording, as well as sound reinforcement applications. An attached 101mm (4 in.) gooseneck allows them to be easily aimed at the sound source.

- Wide dynamic range and frequency response for accurate sound reproduction
- Interchangeable cartridges that provide a choice of polar pattern for each application
- White or black finish that blends unobtrusively with most surroundings
- RF filtering

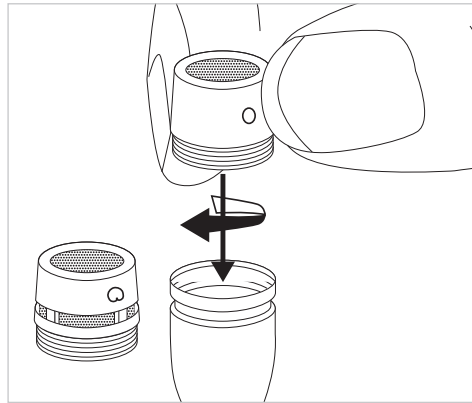
Model Variations

Microflex MX202 microphones are available in black or white with a choice of in-line preamplifier or plate-mount preamplifier.

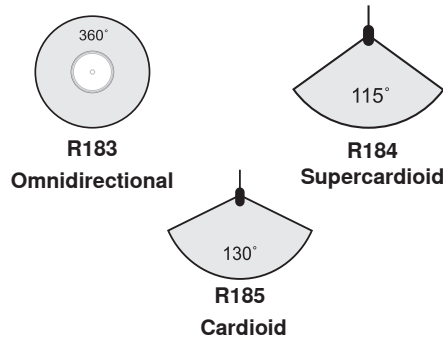
The polar pattern of the included cartridge is indicated by a model number suffix:

- /C Cardioid
- /S Supercardioid
- /O Omnidirectional
- /N Cartridge not included

Interchangeable Cartridges

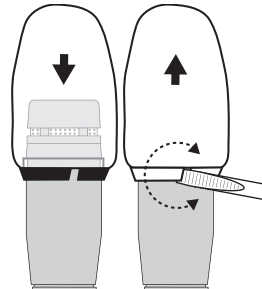


Microflex microphones use interchangeable cartridges that allow you to choose the polar pattern for different installations.



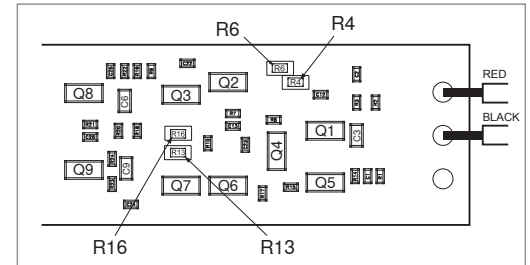
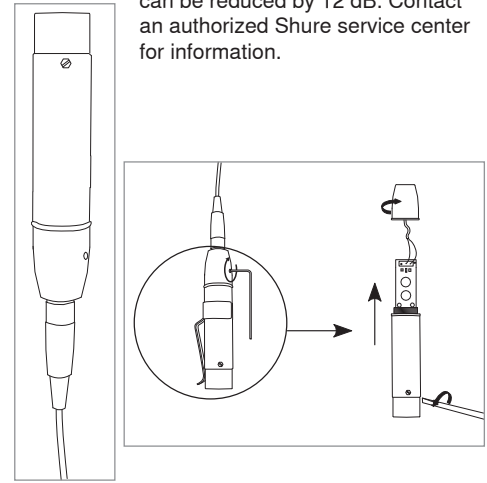
Snap-Fit Windscreen

- Snap into the groove below the cartridge.
- To remove, spread the gap with a screwdriver or thumbnail.
- Provides 30 dB of "pop" protection.



Preamp Gain

If necessary, the preamplifier gain can be reduced by 12 dB. Contact an authorized Shure service center for information.



GAIN SETTING		
	12 dB	0 dB
R6	10k	0 Ω
R4	10k	20k
R16	0 Ω	10M
R13	DNP*	301Ω

*Do Not Place (no resistor)
■ = Factory Default

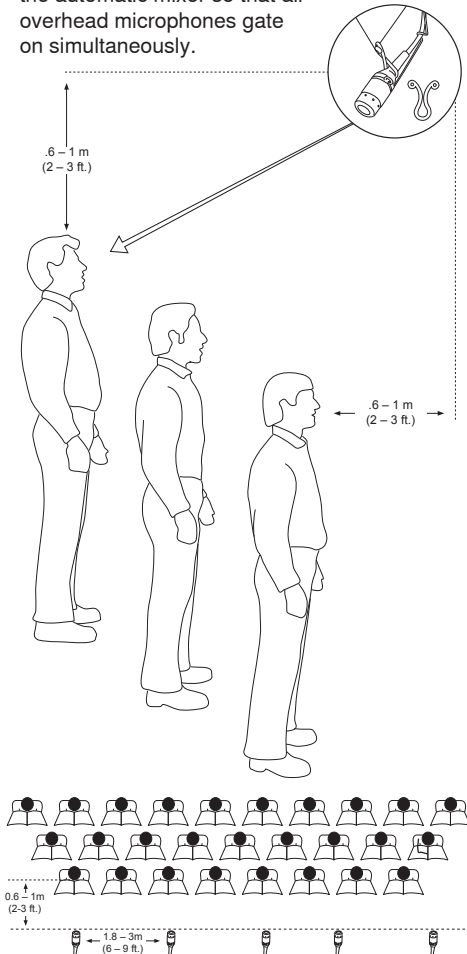
RFI Filtering

Important: Microphones must be used with the RK100PK preamp to optimize RF immunity.

Microphone Placement

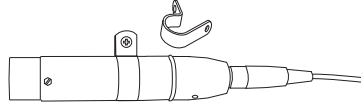
The microphone is most stable when the gooseneck is bent into a "lazy S" shape. Use the supplied hanging clip and heavy thread or monofilament fishing line to suspend the microphone at a specific location.

- For choir installations, hang a microphone 0.6 to 0.9m (2 to 3 ft.) in front of the first row, and 0.6 to 0.9m (2 to 3 ft.) over the heads of the singers in the last row. Aim the microphone at the singers in the last row.
- When miking groups that move or vary in size, use a boom stand and the supplied stand adapter.
- If four or more microphones will be open at once, an automatic mixer, such as the Shure SCM810 or SCM410, is recommended. Set up the automatic mixer so that all overhead microphones gate on simultaneously.



Permanent Installation

Installing the In-Line Preamp



Use the two supplied mounting clamps to hold the preamp in place on a wall or ceiling.

Ceiling Tile Installation

Remove plate-mount preamp connection.

1. Drill a 1/2 in. hole into the ceiling tile.
CAUTION: To avoid tile damage, use a 1/2 in. augur bit and drill very slowly.
2. Unplug the mini 4-pin connector from the preamp and feed the cable through the hole.
3. Place the rubber grommet, tip down, over the cable and position it to suspend the microphone at the appropriate height.
4. Fit the grommet securely into the hole. For 5/8 in. ceiling tile, use the supplied washer.
5. Reconnect the preamp.

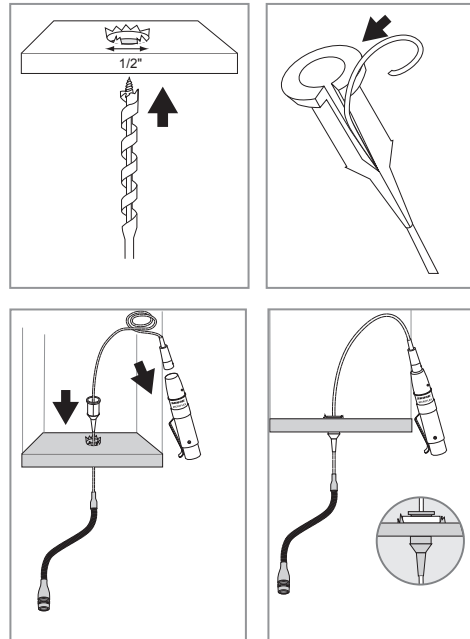
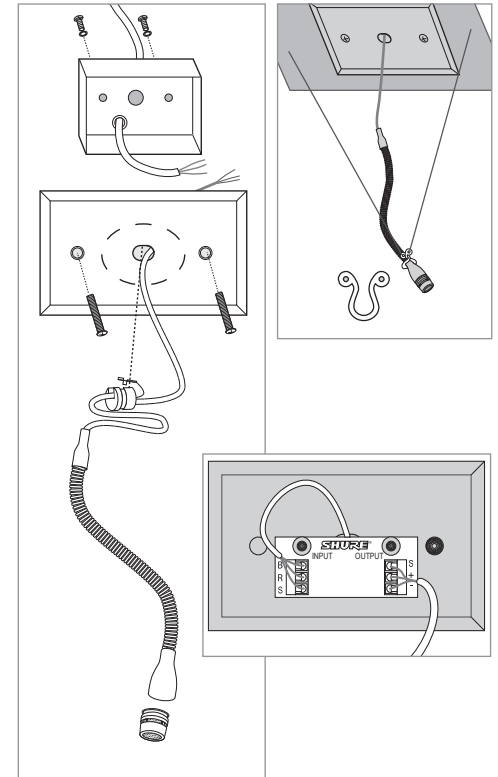


Plate Mount Preamp Installation

The plate-mounted preamp allows you to mount the preamp in an electrical box and use conduit to run cable through ceilings and walls.

1. Remove preamp housing by removing two Phillips head screws.
2. Remove knock-out from the hole in the center of the cover plate (if present).
3. Cut cable to desired hanging length, allowing for a 76 to 101 mm (3 to 4 in.) service loop.
4. Clamp strain relief around cable and insert strain relief into hole in plate.
5. Connect cable leads to input terminal block (B = Black, R = Red, S = Shield).
6. Using professional-quality, two-conductor, shielded microphone cable, thread output cable from outside of preamp through hole with black bushing.
7. Connect cable to output terminal block (Pin 2 = +, Pin 3 = -, Shield = S).
8. Reattach the preamplifier housing.



Specifications

Cartridge Type

Electret Condenser

Frequency Response

50–17000 Hz

Polar Pattern

MX202B/C, MX202W/C:	Cardioid
MX202B/S, MX202W/S:	Supercardioid

Output Impedance

EIA rated at 150 Ω (180 Ω actual)

Output Configuration

Active Balanced

Sensitivity

@ 1 kHz, open circuit voltage

Cardioid	–35 dBV/Pa(18 mV)
Supercardioid	–34 dBV/Pa(21 mV)

1 Pa=94 dB SPL

Maximum SPL

1 kHz at 1% THD, 1 kΩ load

Cardioid	124 dB
Supercardioid	123 dB

Equivalent Output Noise

A-weighted

Cardioid	28 dB SPL
Supercardioid	27 dB

Signal-to-Noise Ratio

Ref. 94 dB SPL at 1 kHz

Cardioid	66 dB
Supercardioid	68 dB

Dynamic Range

1 kΩ load@ 1 kHz

96 dB

Common Mode Rejection

10 Hz to 100 kHz

45 dB minimum

Preamplifier Output Clipping Level

at 1% THD

–6 dBV (0.5 V)

Polarity

Positive sound pressure on diaphragm produces positive voltage on pin 2 relative to pin 3 of output XLR connector

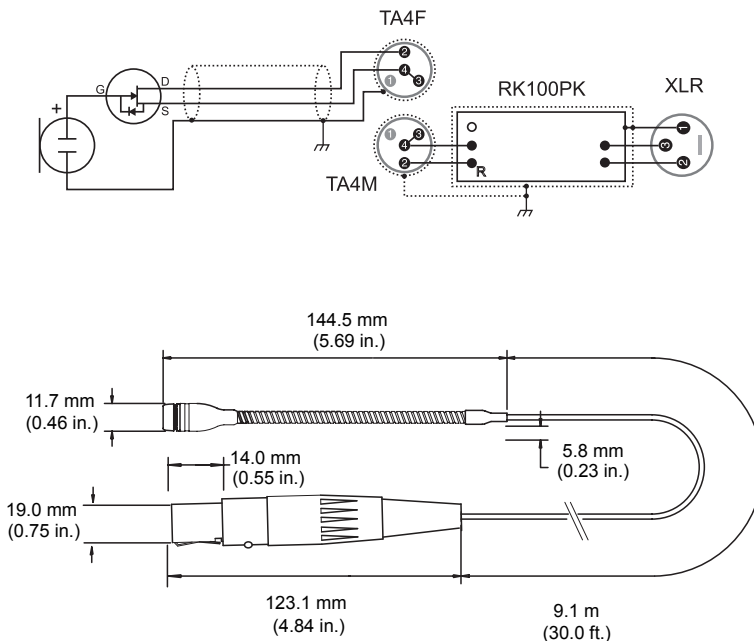
Environmental Conditions

Operating Temperature	–18–57°C (0–135°F)
Storage Temperature	–29–74°C (–20–165°F)
Relative Humidity	0–95%

Power Requirements

11–52 V DC, 2.0 mA

Note: Yellowing of any plastic material can be caused from cigarette smoke, ultra violet rays, and other chemical interactions. Once plastic has yellowed, there typically is no cleaning method that will restore the whiteness.



Certifications

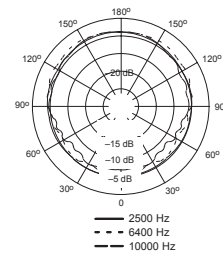
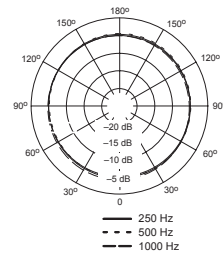
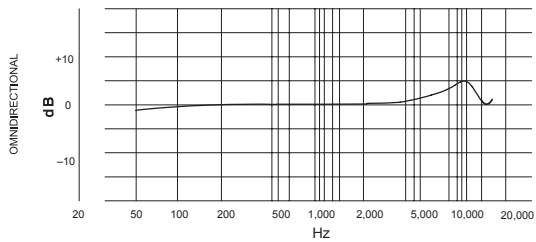
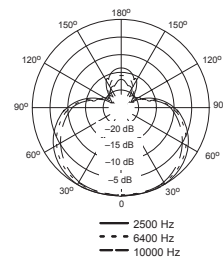
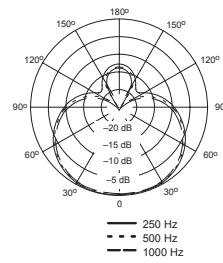
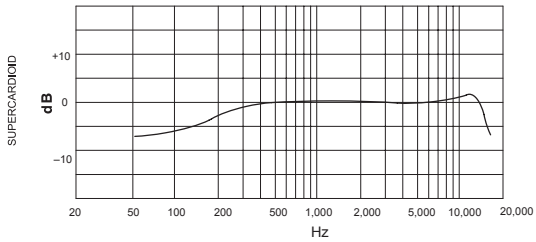
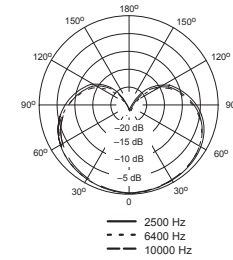
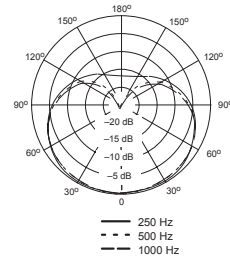
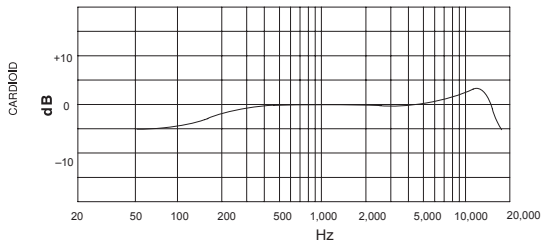
Meets essential requirements of all applicable European Directives.

Eligible for CE marking.

The CE Declaration of Conformity can be obtained from Shure Incorporated or any of its European representatives. For contact information please visit www.shure.com

The CE Declaration of Conformity can be obtained from: www.shure.com/europe/compliance

Authorized European representative:
 Shure Europe GmbH
 Headquarters Europe, Middle East & Africa
 Department: EMEA Approval
 Jakob-Dieffenbacher-Str. 12
 75031 Eppingen, Germany
 Phone: 49-7262-92 49 0
 Fax: 49-7262-92 49 11 4
 Email: EMESupport@shure.de



SHURE®

United States, Canada, Latin America, Caribbean:
Shure Incorporated
5800 West Touhy Avenue
Niles, IL 60714-4608 USA
Phone: 847-600-2000
Fax: 847-600-1212 (USA)
Fax: 847-600-6446
Email: info@shure.com

Europe, Middle East, Africa:
Shure Europe GmbH
Jakob-Dieffenbacher-Str. 12,
75031 Eppingen, Germany
Phone: 49-7262-92490
Fax: 49-7262-9249114
Email: info@shure.de

Asia, Pacific:
Shure Asia Limited
22/F, 625 King's Road
North Point, Island East
Hong Kong
Phone: 852-2893-4290
Fax: 852-2893-4055
Email: info@shure.com.hk