

USER MANUAL

MINI SOUND LEVEL METER



1. INTRODUCTION

With the SLM200 we developed a stable, safe and reliable way to measure environmental noise levels. This compact digital sound meter has been perfected to achieve highly accurate measurements in a cost-effective, tightly packed measuring instrument. We envisioned a clever and ergonomic tool, accessible when needed. That's why the SLM200's convenient design is densely loaded with all the features of similar bigger devices.

The SLM200 is an exceptionally versatile tool which is convenient in a wide range of applications. Engineering, product quality control and health monitoring are only a handful of implementations where the SLM200 is the appropriate tool. Applications are endless, the SLM200 suits any environment where accurate noise measuring is necessary.

2. WARNING

Before using this product, please read the operation rules carefully. It includes relevant safety information and warnings.


3. OPERATION SAFETY

This product strictly follows the requirements of "General specification for sound level meters" in design and production.

1. Please check the meter and the accessories before using and beware of any damage. If you find the case is damaged or the LCD shows nothing, or you consider that the meter could not work properly anymore, please stop using it.

2. Observe the operating instructions while measuring.

3. Do not open the meter at will or change internal wiring, to avoid damages to the device.

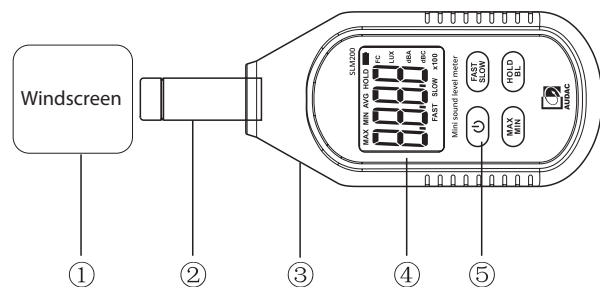
4. When the LCD displays "  ", replace the battery timely. Remove the battery if the meter is not used for a long time.

5. Do not store or use the meter in high temperature, high humidity, flammable, combustible or strong electromagnetic environments.

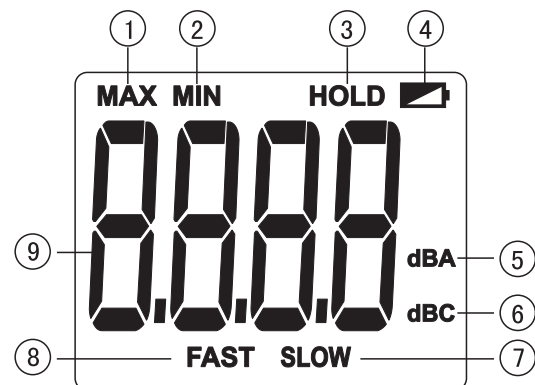
6. Please use a soft cloth and neutral detergent to clean the case for maintenance. Do not use grinding agent or solvent to avoid case corrosion and damage to the meter.

4. PRODUCT OVERVIEW

1. Windscreen
2. Microphone
3. Meter Case
4. LCD Display
5. Function keys



5. DISPLAY INTERFACE



- | | |
|------------------------|-----------------------|
| 1. Maximum measurement | 6. C weighted |
| 2. Minimum measurement | 7. Slow response rate |
| 3. Data hold | 8. Fast response rate |
| 4. Low battery | 9. Measurement value |
| 5. A weighted | |

6. KEY FUNCTION AND SETUP

1. ON/OFF: Short press once to start up; short press again to power off.

Note: Product's auto power off feature can be disabled: Press and hold "HOLD" and then press "ON/OFF" key to enable/disable auto power off, the LCD will display "APO OFF" to indicate the status.

2. FAST/SLOW: Sampling time: When measuring, pressing this key to select between fast time of 125ms and slow time of 1s.

USER MANUAL

MINI SOUND LEVEL METER



3. MAX/MIN: Press this key to select maximum, minimum or normal measurement mode, when maximum or minimum measurement is selected, the meter constantly shows the maximum reading or the minimum reading.

4. HOLD/BL:

HOLD: Short press this key once to hold the measurement; short press the key once again to exit data hold and continue normal measurement.

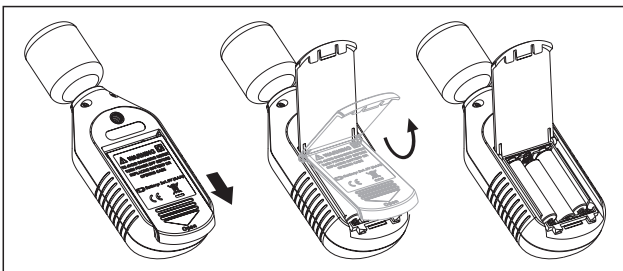
BL: long press this key to turn on backlight, and long press it again to turn off backlight.

8. BATTERY INSTALLATION AND REPLACEMENT

This device uses 3 AAA 1.5 V batteries. Please see the figure below for battery installation or replacement.

The battery cover is located on the backpanel, gently push it open in the direction of the arrow, lift the cover and remove the batteries, install the new batteries according to the polarity indications.

Close the cover by closing it and locking it back into place.



CAUTION - SERVICING

This product contains no user serviceable parts. Refer all servicing to qualified service personnel. Do not perform any servicing (unless you are qualified to do so).

EC DECLARATION OF CONFORMITY

This product conforms to all the essential requirements and further relevant specifications described in following directives: 2014/30/EU (EMC) and 2014/35/EU (LVD)

7. TECHNICAL SPECIFICATIONS

Sound level:	
Response	31.5Hz - 8 kHz
Range	30 - 130 dB
Resolution	0.1 dB
Accuracy	+/- 1.5 dB
Sampling time:	
Fast	125 ms
Slow	1000 ms
Overload indication:	
UN	Under range
OL	Over range
Auto Power Off:	5 min
Low Battery Indicator:	3 - 3.5 V
LCD display:	4-Bit LCD display (Max value: 9999)
Sensor type:	1/2" condenser microphone
Power requirements:	3 x 1.5 V batteries (AAA)
Product size:	150 x 52 x 27 mm
Weight:	116 g

WASTE OF ELECTRICAL AND ELECTRONIC EQUIPMENT (WEEE)

The WEEE marking indicates that this product should not be disposed with regular household waste at the end of its product life. This regulation is created to protect both the environment and human health.

This product is developed and manufactured with high quality materials and components which can be recycled and/or reused. Please dispose of this product at your local collection point or recycling center for electrical and electronic waste. Do this to make sure that the product is recycled in an environmental friendly way, and help to protect the environment in which we all live.