

AE01 | IN EAR MONITORS HEADPHONE

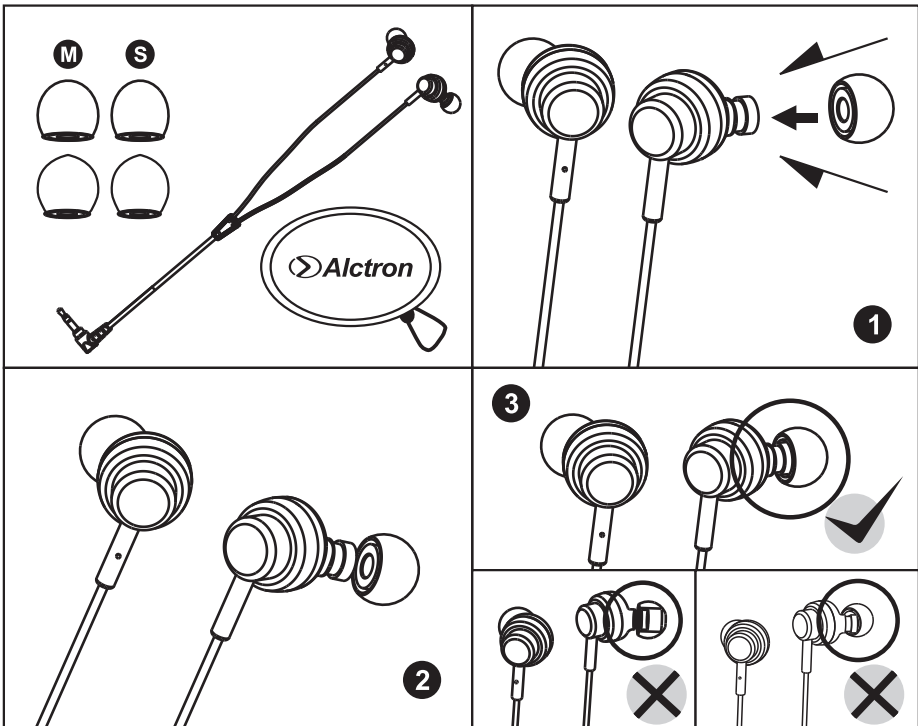
GENERAL DESCRIPTION

AE01 In-Ear Headphones offer the essence of clarity & comfort, for a remarkably rich listening experience. The sound is crystal clear & clean with a great sense of depth and detail. The ear-fit design provides outstanding sound isolation to guard against outside noise interference. 10mm driver unit offers you a wide vocal range. The touch feeling of headphone is delicate, the whole headphone giving you a wonderful vision. The humanized design, no matter big or small hand can catch the headphones easily. It is also convenience for you to wear or off the headphones.

FEATURES

- * Novelty design with flexible wire tube, adorn comfortable;
- * Ear-fit provide the noise from outside effectively to ensure high quality sound;
- * High quality handicraft, enjoy listening;
- * Simple packing, fashionable and environmental;
- * Adopt slant design which can prevent sound releasing effectively.

HOW TO USE THE HEADPHONE



MAINTENANCE

- * Do not use solvent such as alcohol, thinner or benzene;
- * Wipe the driver unit and the plug occasionally with a soft and dry cloth. A dirty plug may cause noise or sound skipping.
- * Do not breath on the driver unit.
- * Remove the earbuds from the headphones and wash the earbuds by hand using a diluted detergent solution. After washing the earbuds, dry them well.

SAFETY PRECAUTIONS

- * The noise canceling effect may not pronounce in a very quiet environment, or some noise may be heard.
- * The earbuds seal your ears. Therefore, be aware that there is a risk of damage to your ears or eardrums if strong pressure is applied to the earbuds or the earbuds are suddenly removed from your ears. After use, be sure to take the earbuds off your ears gently.
- * Do not fall asleep while wearing headphones. If you sleep wearing headphones, the headphone cord may around your neck, possibly causing suffocation.
- * High volume may affect your hearing. For traffic safety, do not use while driving or cycling.
- * In particularly dry air conditions, noise or sound skipping may occur, or mild tingling may be felt on your ears. This is a result of static electricity accumulated in the body, and not a malfunction of the headphones. The effect can be minimized by wearing clothed from natural materials.

TECHNICAL SPECIFICATIONS

- * Transducer type: dynamic
- * Driver: 10mm
- * Frequency range: 20Hz-20kHz
- * Sensitivity: (92-107)dB±3dB at 20Hz-2000Hz
(95-102)dB±4dB at 3000Hz-5000Hz
- * Impedance: 16Ω±15% at 1kHz
- * Max power: 10mW
- * Output SPL: 94±3dB
- * Connector: 3.5mmgold-plated stereo standard plug
- * Cord: 1.6m

Ningbo Yinzhou Alctron Electronics Co.,Ltd always try to guarantee and improve the quality of product, necessary modification will go on without prior notice. So the specification and appearance may be a little differ from description or illustration, hope your understanding.

AE01 监听耳机

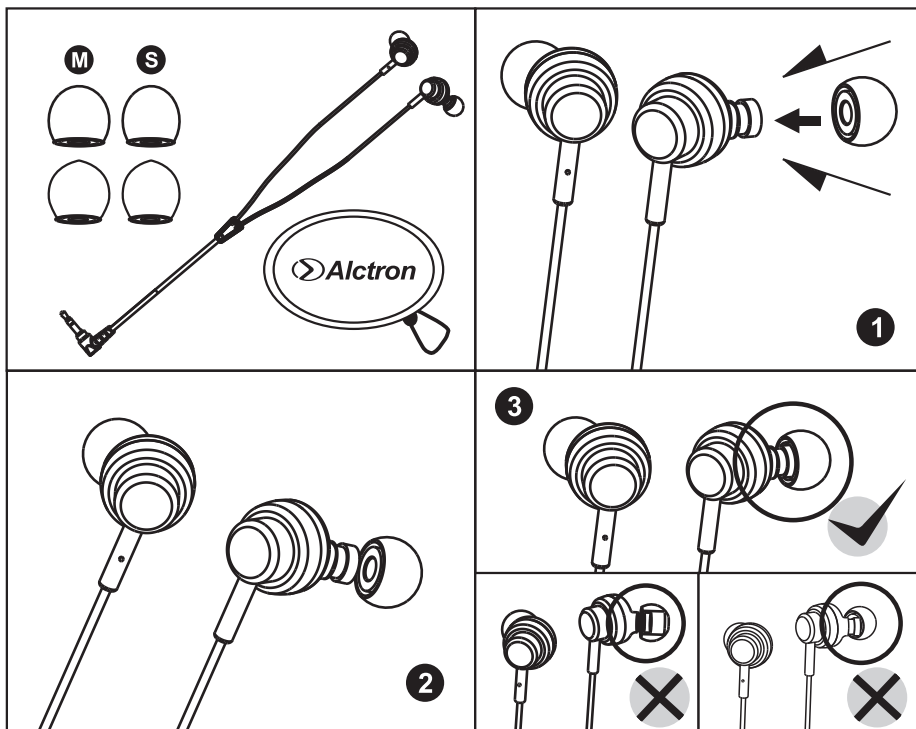
产品介绍

AE01耳机为您提供纯真，清晰的声音，畅享聆听。透彻清晰的声音，有着深层次的声音细节。耳塞能够有效地拦截来自外界的噪音，10mm的驱动单位给您一个广阔的音域。耳机触感比较细腻，整体给人一种大气的感觉。人性化的外壳拿捏设计，无论大手或小手，轻松拿捏耳机，佩戴或摘下耳机显得轻松了。

特点

- * 设计新颖，弯曲导管设计，佩戴舒适；
- * 良好的隔音效果，保证音质清晰；
- * 高品质工艺，畅享聆听；
- * 简约包装，时尚环保；
- * 入耳部分采取倾斜设计，可以有效防止漏音

如何正确使用耳机



保养及维护

- * 请勿使用酒精、稀释剂或苯等溶剂清洗。
- * 请使用柔软的干布不定期地擦拭耳机和插头。插头变脏可能导致噪音或跳音。
- * 请勿对着驱动单元吹气。
- * 从耳机上取下耳塞，使用稀释的洗涤剂溶液手工清洗耳塞。清洗耳塞后将其放于阴凉干燥处晾干。

▲ 安全事项

- * 在非常安静的环境中，降噪效果可能不明显或可能听到一些噪音。
- * 耳塞会堵住双耳。因此，请注意，如果对耳塞施加较强压力或从耳朵中猛烈取出耳塞，则存在损伤耳朵或耳膜的风险。使用后，请务必从耳朵中轻轻取出耳塞。
- * 请勿带着耳机入睡。如果带着耳机睡觉，耳机线可能会缠在颈部，可能导致窒息。
- * 高音量可能会影响听力。为确保交通安全，驾车或骑车时请勿使用。
- * 在特别干燥的空气条件下，可能会出现噪音或跳音，或耳朵可能会感到轻微刺痛。这是由于体内积聚的静电所致，并非耳机故障。穿着天然材料制成的衣服可以将此影响减到最小。

产品参数

- * 产品类型: 动圈驱动器
- * 驱动单元: 10mm
- * 频响范围: 20Hz-20kHz
- * 灵敏度: (92-107) dB \pm 3dB在20Hz-2000Hz
(95-102) dB \pm 4dB在3000Hz-5000Hz
- * 阻抗: 16 Ω \pm 15%在1kHz
- * 最大功率: 10mW
- * 输出SPL: 94 \pm 3dB
- * 插头: 3.5mm镀金立体声标准插头
- * 线长: 1.6m

奥创电子有限公司始终尽力确保最高的质量水平。必要的修改将不预先通知予以实行。因此产品的技术数据和外观可能与所述说明或插图有不同之处，敬请谅解。

宁波市鄞州奥创电子有限公司 地址: 浙江省宁波市鄞州区秀丰工业区三成路76号 电话: ++86 574 88009874
传真: 0574-87157176 邮箱: sales@alctron-audio.com 网址: <http://www.alctron-audio.com>
全国统一服务热线: 4000-160-112