

## S507 | STEREO RECORDING MICROPHONE

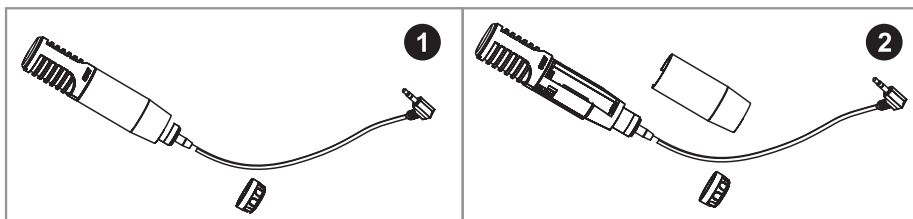
### GENERAL DESCRIPTION

S507 is a kind of professional stereo recording microphone. It applies to mobile phone, computer, DSLR, voice recorder (Due to itself construction, mobile phone and computer are mono input, so both of them cannot achieve part function of S507), DSLR and voice recorder can achieve perfectly. S507 has two record ranges---90 degree/120 degree. 90 degree applies to narrow sound source such as solo instrument, dialogue for clear position with stereo sound space. 120 degree applies to wider sound sources such as orchestra, choir and stage performance for natural stereo recording.

### FEATURES

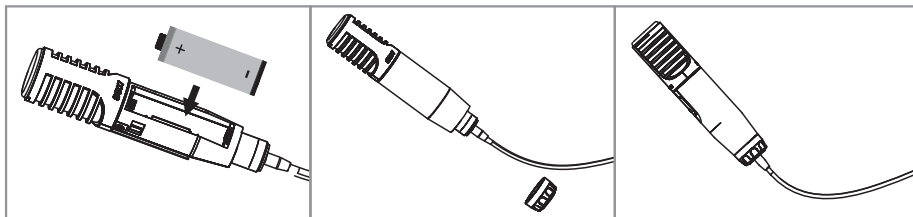
1. Light weight body, convenient for carrying and set-up ;
2. Coverage can be switched between 90 degree and 120 degree;
3. Apply for wide range;
4. 3.5mm stereo plug;
5. 2 capsules achieve for stereo recording.

### HOW TO INSTALL THE BATTERY



Unscrew microphone rear cover

Remove body shell to open battery holder



Inserting battery according to the polarity indication

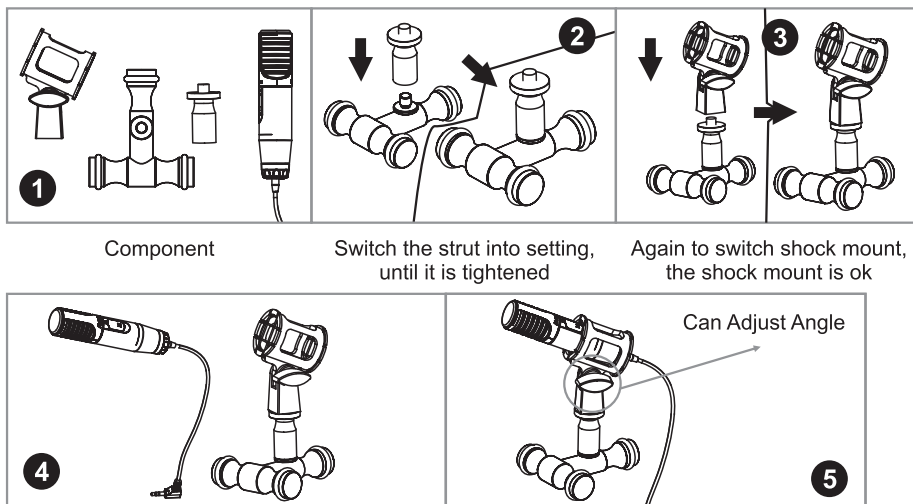
Mounting the shell into the microphone

Screw microphone rear cover

### BATTERY LIFT

Powering on the microphone when activating the switch, battery indicator will light up for 1s. (Note: The power indicator just indicate for 1s) When battery becoming weakness, please change the battery. Generally, one No.5 battery can provide 150 hours of continuous working for S507.

## INSTALL



First let cable through shock mount slowly, push the shock belt away to the two sides, then microphone's tail into shock mount, push the microphone. Do not push it too much, because if you push too much, it is inconvenient for you to use the power switch. After finishing, you can use it now.

## ⚠ SAFETY PRECAUTION

1. Do not charge the battery;
2. Remove battery if the microphone will not be used for a long period;
3. Store the microphone out of the reach of children;
4. Do not store the microphone under direct sunlight, near heating devices or in a hot, humid or dusty place. Do not allow the microphone to get wet;
5. Do not disassemble, modify or attempt to repair the microphone;
6. Connect/disconnect the cable by holding the plug. Pulling directly on the cable can result in a broken wire and the risk of electric shock.

## SPECIFICATION

Type: Electrets condenser  
Polar pattern: Super cardioids  
Sensitivity( $\pm 3\text{dB}$ ):  $-45\text{dB}(14\text{mV/pa})$   
Frequency response:  $20\text{Hz}-20\text{kHz}$   
Max SPL:  $125\text{dB}$   
Impedance:  $<2.3\text{kohm}$   
Connector: 3.5mm stereo mini(female)  
Output channel: mono(L & R)

ALCTRON is constantly striving to maintain the highest professional standards. As a result of these efforts, modifications may be made from time to time to existing products without prior notice. Specifications and appearance may differ from those listed or illustrated.

ALCTRON ELECTRONICS CO.,LTD No.76 SanCheng Road, XiuFeng Industrial Area,GaoQiao Town, NingBo China.  
Tel:++86 574 87150672 Fax:++86 574 87157176 E-mail:info@alctron-audio.com www.alctron-audio.com

## S507 立体声录音话筒

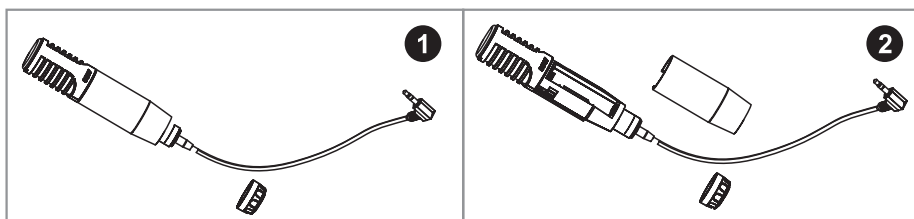
### 产品简介

S507是一款专业的立体声录音话筒。适用于手机、电脑、单反相机、录音笔（由于手机和电脑本身是单声道输入，所以此款录音话筒的部分功能不能实现），单反相机和录音笔能很好地实现S507的强大功能。S507有两种拾音范围----90度、120度。90度适用较窄的拾音，比如乐器独奏，谈话等，提供清晰的立体声拾音。120度适用较宽广的拾音，如乐队演奏，合唱，舞台表演等，提供自然的声音。

### 特征

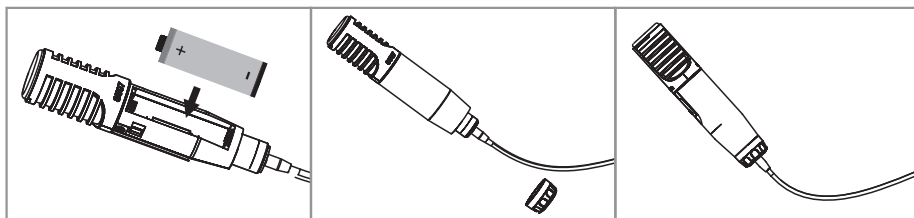
1. 轻盈且体积小，便于安装携带；
2. 90、120度2种拾音范围；
3. 适用范围广；
4. 3.5mm立体声接头；
5. 2个音头实现了立体声录音。

### 如何安装电池



将麦克风的底座旋出

将壳身顺势下滑，取下壳身



装入5号电池即可

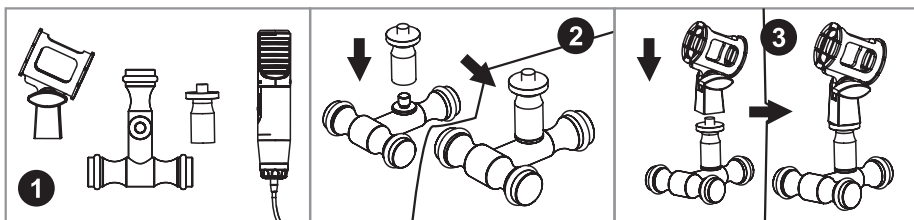
将壳身再安装上去

拧紧底座

### 🔋 电池寿命

当您打开麦克风开关时，电源指示灯会随即亮一下。（注意：电源指示灯只会亮一下，并且马上就不亮了）当电池电力减弱，请立即更换电池。1节一般的5号电池可以连续提供150小时的工作电力。

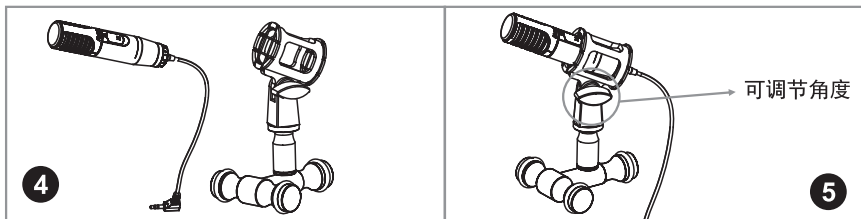
## 安装步骤



部件

将支杆旋入底座，直至不能  
再旋转

再将防震架旋入，  
这样防震架就安装好了



4

可调节角度

5

首先将话筒的电缆线慢慢的穿过防震架，将防震带向两边拨开让话筒尾部进入防震架，慢慢将话筒推进防震架。当话筒尾部在防震架尾部的时候请停止往里推，因为开关位置在话筒中间，如果推得过于里面不方便开关的使用。安装完成后，您可以放心使用话筒了。

## ⚠ 安全事项

1. 请勿给电池充电；
2. 若是长时间不使用，请将电池取出；
3. 请将麦克风放在儿童拿不到的地方；
4. 不要将麦克风放在阳光直射下、暖气设备附近或湿热或多尘的地方。不要弄湿麦克风；
5. 请勿拆卸或改造麦克风；
6. 请抓住插头拔导线。直接拉扯导线可能导致电线损坏和触电危险。

## 产品参数

- \* 类型：驻极电容麦克风
- \* 指向性：超心型
- \* 灵敏度(±3dB)：-45dB(14mV/pa)
- \* 频率范围：20Hz-20kHz
- \* 最大声压级：125dB
- \* 阻抗：<math><2.3\text{kohm}</math>
- \* 接头：3.5mm立体声迷你接头（卡侬母）
- \* 输出通道：单声道（左声道和右声道）

奥创电子有限公司始终尽力确保最高的质量水平。必要的修改将不预先通知予以实行。因此产品的技术数据和外观可能与所述说明或插图有不同之处，敬请谅解。