

HE288 | Professional MONITOR HEADPHONE

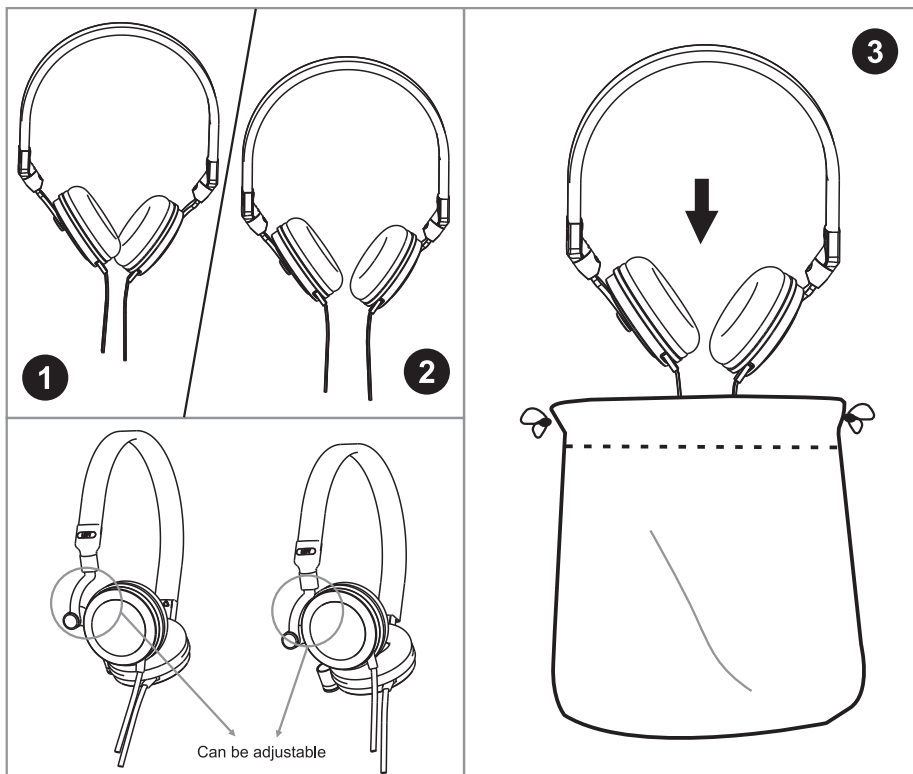
GENERAL INTRODUCTION

HE288 is a kind of professional monitor headphone. Closed-ear design gives a tight response, snugles over the ear for hours of comfort. When you are wearing the headphone, the sound can be external hardly. While listening to music, it can reduce the noise from outside effectively. It is rich bass and high fully. Real restore every sound detail, take you into a comfortable and delicate sound world. HE288's sound is natural and delicate, fruity and sonorous. its better resolution and penetration make the scene feeling and more vivid.

FEATURES

- * Closed-ear design ;
- * Better resolution and penetration ;
- * Comfortable and delicate sound ;
- * Tiny volume, convenient for you to carry;

HOW TO STORE THE HEADPHONE



CAUTION AND WARNING

CAUTION:

- * Ignoring these cautions may cause moderate injury or property damage as a result of incorrect operation.
- * Never use the headphones while driving a car, riding a motorcycle or bicycle or operating any other vehicle.
- * Do not disassemble, modify or attempt to repair the headphones.
- * The cable may become caught or severed if product is placed in a bag or pocket without adequate protection.

WARNING:

- * Ignoring these warnings may cause severe injury or death as a result of incorrect operation.
- * Do not store the headphone under direct sunlight, near heating devices or in a hot, humid or dusty place. Do not allow the headphones to get wet.
- * Listening to audio at excessive volumes can cause permanent hearing damage. Use as low a volume as possible.
- * Connect/disconnect the cable by holding the plug. Pulling directly on the cable can result in a broken wire and the risk of electric shock.
- * Do not subject the headphones to strong impact.

SPECIFICATION

Transducer Type: Dynamic, Neodymium Magnet
Transducer Size: 40mm
Impedance: $32 \Omega \pm 15\%$ At 1kHz , input : 0.179vrms
Sound Pressure Level: $115 \pm 3\text{db}(0\text{db}=20\mu\text{pa})$ At 1kHz , input:0.179vrms
Frequency Response Curve: 10-20000hz
Sensitivity: 95db Spl/mw (at 1 KHz)
Max Output Power: 20mw
Max Input Power: 500mw
Net Weight: 274g
Gross Weight: 633g
Connector: Gold-plated 3.5 Mm (1/8") Stereo Mini Jack Plug With 6.35 Mm (1/4") Threaded Adapter
Cable: 3m, (9.8 Ft) Coiled, Detachable, Non-pvc, Oxygen-free Copper (ofc)

ALCTRON is constantly striving to maintain the highest professional standards. As a result of these efforts, modifications may be made from time to time to existing products without prior notice. Specifications and appearance may differ from those listed or illustrated.

ALCTRON ELECTRONICS CO.,LTD No.76 SanCheng Road, XiuFeng Industrial Area,GaoQiao Town, NingBo China.
Tel:++86 574 87150672 Fax:++86 574 87157176 E-mail:info@alctron-audio.com www.alctron-audio.com

HE288监听耳机

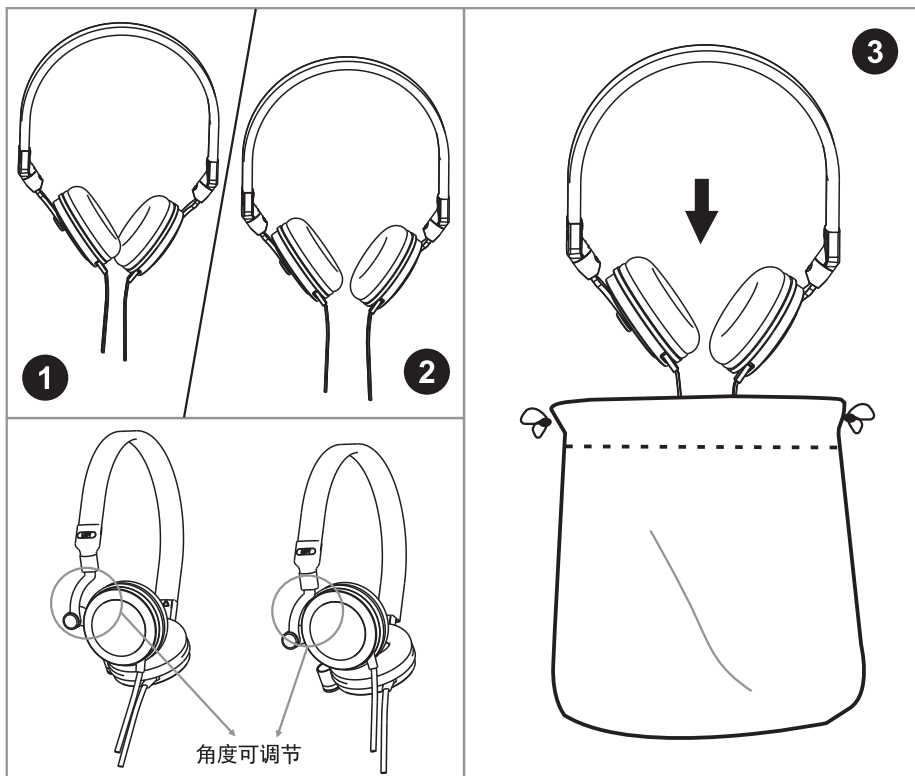
产品介绍

HE288是一款专业的监听耳机。封闭式贴耳耳罩设计，佩戴舒适、可以有效地隔离外界噪音，尽情享受音乐的世界。佩戴上耳机，音乐声音不会外泄，畅享音乐的同时，减少外界噪音污染。HE288低音浑厚，高音饱满，真实细腻地还原声音的每一个细节，带您感受舒适和精致的音乐视听。HE288声音纯净自然、圆润高亢，其良好的解析力、穿透力，能够将音乐的现场感、层次感表现得淋漓尽致。

特征

- * 贴耳式封闭式设计；
- * 解析力、穿透力良好；
- * 声音纯净自然、细腻清澈；
- * 体积较小，携带方便。
- * 高低音分明。

如何存放耳机



⚠ 安全注意事项

如果没有遵循这些注意事项，在操作不正确的情况下可能会导致常见的人身伤害或财产损失。

* 在驾驶汽车、骑摩托车或者自行车或者操作任何其他机动车时，切勿使用耳机；

* 请勿拆卸或者改装耳机；

* 如果不加适当保护便将本产品放在提包或者口袋中，线缆可能会缠住或折断。

警告

* 如果没有遵循这些警告事项，在操作不正确的情况下可能会导致严重的人身伤亡事故；

* 不要将耳机存放在直射阳光下、暖气设备附近或湿热或多尘的地方。不要弄湿；

* 收听过高音量可能会导致永久性失聪。应使用尽可能低的音量收听；

* 请抓住插头插拔导线。直接拉扯导线可能导致电线损坏和触电危险；

* 请勿使耳机受到强烈撞击。

产品参数

* 传感器类型： 钕磁铁动圈

* 传感器尺寸： 40 mm

* 阻抗： 32 Ohms \pm 15% (at 1kHz, 输入: 0.179Vrms)

* 声压级： 115 \pm 3dB(OdB=20 μ Pa) at 1kHz, 输入: 0.179Vrms

* 频率范围： 10-20000hz

* 灵敏度： 95dB SPL/mW

* 最大输出功率： 20mw

* 最大输入功率： 500 mW

* 净重 (不带缆线)： 274g

* 毛重： 633g

* 接头插头： 镀金 3.5 毫米 (1/8 英寸) 立体声迷你插头和6.35 毫米 (1/4 英寸)

* 缆线： 3 米, (9.8 英尺) 线圈, 可拆卸, 非 PVC, 无氧铜 (OFC)

奥创电子有限公司始终尽力确保和提高产品的质量水平。必要的修改将不预先通知予以实行。因此产品的技术数据和外观可能与所述说明或插图有不同之处，敬请谅解。

宁波市鄞州奥创电子有限公司 地址：浙江省宁波市鄞州区秀丰工业区三成路76号 电话：++86 574 88009874
传真：0574-87157176 邮箱：sales@alctron-audio.com 网址：http://www.alctron-audio.com
全国统一服务热线：4000-160-112