



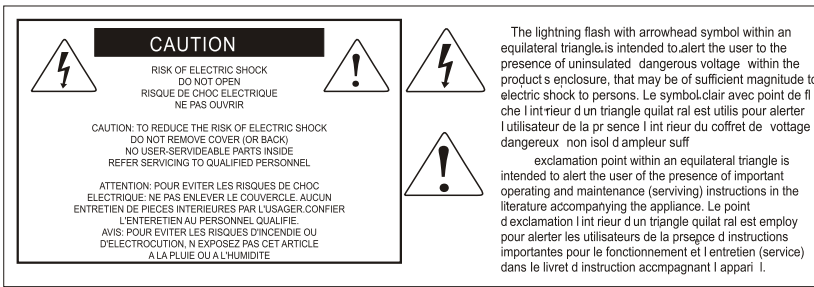
PLATFORM·NANO

MIDI/Audio control surface with motorized fader for production



User manual





Important Safety Instructions

1. Read this manual thoroughly before using this unit.
2. Keep this manual for future reference.
3. Take notice of and comply with all warnings included in the user's manual or indicated on the appliance.
4. Follow all instructions included in this manual.
5. Do not expose this unit to rain or moisture. Avoid having water or other liquids spilled on this unit.
6. When cleaning the cabinet or other parts of this appliance, use only a dry or slightly damp soft cloth.
7. Do not block any ventilation openings or interfere with the proper ventilation of this unit. Install in accordance with the manufacturer's instructions.
8. Do not use or store near any heat sources such as radiators, heat registers, stoves, or other heat-producing appliances.
9. Do not interfere with the safety purpose of the polarized or grounding-type plug. A polarized plug has two blades with one wider than the other. A grounding-type plug has two blades and a third grounding prong. These are designated for your safety. If the provided plug does not fit into your outlet, consult an electrician.
10. Protect the power cord from being walked on or otherwise damaged by items placed on or against them. Particular attention should be given to the plugs, receptacles, and the point where the cord exits the appliance.
11. To avoid the risk of electrical shock, do not touch any exposed wiring while the unit is in operation.
12. Only use attachments/accessories specified by the manufacturer.
13. Unplug this unit and all connected electrical equipment during lightning storms or when left unused a long period of time.
14. Refer all servicing to qualified service personnel. Servicing is required when the appliance has been damaged in any way or fails to operate normally.

WARNING: To reduce the risk of fire or electric shock, do not expose this unit to rain or moisture

Contents

Introduction.....	4
What's in the package?	4
Register your ICON ProAudio product to your personal account	5
Features	6
Top Panel Layout.....	7
Rear Panel Layout.....	9
Getting Started	10
Connecting Your PlatformNano Controller.....	10
Cubase	11
Nuendo	12
Logic Pro	13
Samplitude.....	15
Bitwig	16
Reason	17
Reaper.....	18
Studio One.....	19
Ableton Live.....	20
Pro Tools.....	21
Download the Mac iMap from your Personal User Page at www.iconproaudio.com.....	23
Installing iMap™ Software for Windows	24
Assigning DAW mode (Mackie Control/HUI)	26
or self define MIDI functions with iMap™	26
Assigning DAW mode (Mackie control/HUI).....	27
with iMap™	27
Assigning MIDI message with User Defined mode at iMap™	29
Control element setup at User defined mode	31
Other Functions in iMap™	33
Firmware upgrade	34
Restore the factory default settings.....	38
Hardware Connections	39
Specifications	40
Services.....	41

Introduction

Thank you for purchasing the ICON ProAudio PlatformNano digital control surface. We sincerely trust this product will provide years of satisfactory service, but if anything is not to your complete satisfaction, we will endeavor to make things right.

In these pages, you'll find a detailed description of the features of the PlatformNano, as well as a guided tour through its front and rear panels, step-by-step instructions for their setup and use, and full specifications.

Please register the product on our website at the below link
[www. iconproaudio.com/registration](http://www.iconproaudio.com/registration):

Please follow the step by step procedures. Start by inputting the device's serial number as well as your personal information, etc. By registering your product online, you will be entitled to service and after-sales support at our Help Center by visiting our website at **www.iconproaudio.com**. Also, all the registered products under your account will be listed on your personal product page where you will find updated information such as firmware/driver upgrades, software bundles, user manual downloads, etc. for your device.

As with most electronic devices, we strongly recommend you retain the original packaging. In the unlikely event the product must be returned for servicing, the original packaging (or reasonable equivalent) is required.

With proper care and adequate air circulation, your PlatformNano will operate without any trouble for many years.

What's in the package?

- PlatformNano USB-MIDI Controller x 1pc
- Quick Start Guide x 1
- USB3.0 Cable x 1
- PVC overlays for different DAWs

Register your ICON ProAudio product to your personal account

1. Check serial number of your device

Please go to [http:// iconproaudio.com/registration](http://iconproaudio.com/registration) or scan the QR code below.



Input your device's serial number and the other information on the screen. Click "Submit".

A message will pop up showing your device information such as model name and its serial number - Click "Register this device to my account" or if you see any other message, please contact our after-sales service team

2. Log in to your personal account page for existing user or sign up for new user

Existing user: Please log into your personal user page by inputing your user name and password.

New user: Please click "Sign Up" and fill in all the information.

3. Download all useful materials

All your registered devices under your account will show on the page. Each product will be listed along with all its available files such as drivers, firmware, user manual in different languages and bundled software etc. for download. Please make sure you have download the necessary files such as driver before you begin device installation.

Features



- 1 touch-sensitive motorized fader with 10-bit resolution
- Extremely compact, durable and versatile
- Backlit LCD to display channel name, control values, etc.
- 1 + 4 dual-function encoder knobs (Rotate and Eenter)
- 11-segment LED surrounding the encoders to indicate the rotating position for the main knob control
- 12-segment LED display shows timecode or location of your project in either SMPTE or Midi beat clock (bars:beats:ticks) formats
- Jog wheel shuttle for fast search, scrub and control
- 8 LED color-coded function buttons coordinate with 5 different color layers for switching a variety of function controls
- Illuminated buttons for channel control including Mute, Solo and Record
- 6 illuminated transport buttons including Play, Stop, Rec, Rewind, Fast Forward and Loop
- Illuminated “Zoom” buttons with 2 directional keys (Left/Right & Up/Down) used in combination with the jog wheel
- 2 illuminated “Track” buttons for selection of individual channels
- 2 illuminated “Bank” buttons for shifting 8-channels at a time
- Supports Universal Mackie Control and HUI protocols for seamless integration with compatible music production software
- The most popular DAW overlays are included-Cubase/Nuendo, Logic Pro X, Digital Performer, FL Studio, Samplitude, Reaper, Studio One, Bitwig, Reason, ProTools, Sonar, Audition, Ableton Live and User Define Mode
- iMap™ software included for mapping of MIDI functions
- USB 3.0 high-speed connectivity
- Firmware upgrade available via USB connection and iMap™ software
- BlueTooth wireless connectivity and rechargeable battery with the PN-M1 module (Optional)
- User A & User B 1/4 inch inputs for connecting with footswitch pedals
- Platform D3 LCD display connector available (Optional)
- Class-compliant with Mac OS X, Windows 10, Windows 8 (32-bit & 64-bit), Windows 7 (32-bit & 64-bit)
- Superior build quality and robust metal casing with Kensington lock port

Top Panel Layout



NOTE: Function operates slightly difference between DAWs. Please refer to your DAW manual for each function. The following description is based on the functions that operate in Apple Logic Pro.

1. LCD backlit display

Backlit LCD display shows the parameter values as you adjust them and also provides feedback about channel selections, operating modes, and more.

2. Channel/Master faders

The touch sensitive fader is used to adjust the parameters of different channels. Press the two “Fader” buttons to shift between channels. By pressing the “Master” button, the fader will control the parameter of the master channel

3. Knobs

The four rotary encoder knobs are generally used for controlling the track pan position, aux send levels and EQ of your DAW. You may also preset them to adjust specific parameters within plug-ins and virtual instruments.

4. Control buttons

4a) Recording channel control buttons

REC button-Activate and deactivate the recording state of the associated channel. The switch will light red when the channel is armed.

SOLO button-Turn On and Off the solo state of the associated channel. The switch will light green when the channel solo state is on and other channels will be muted.

MUTE button-Activate and deactivate the mute state of the associated channel. The switch will light blue when the channel is muted.

4b) Motorized fader control buttons section

Fader< button-Shift “one” channel up for all faders (except the master channel).

Fader> button-Shift “one” channel down for all faders (except the master channel).

BANK < button-Shift “eight” channels up for all faders (except the master channel).

BANK > button-Shift “eight” channels down for all faders (except the master channel).

5. Jog wheel section

5a) Jog wheel-The jog wheel is used for various purposes specific to the DAW application, including shuttle and scrubbing functions.

5b) Zoom control buttons section

Zoom UP/DOWN button – The Zoom UP/Down button is used to navigate up or down through the Graphical User Interface (GUI) of the DAW application.

Zoom LEFT/RIGHT button-The LEFT/RIGHT button is used to navigate left or right through the Graphical User Interface (GUI) of the DAW application.

6. Transport control buttons section

PLAY button-Activate the play function of the DAW.

STOP button-Activate the stop function of the DAW.

REC button-Activate the record function of the DAW.

REWIND button-Activate the rewind function of the DAW.

FAST FORWARD button-Activate the fast forward function of the DAW.

LOOP button-Activate the loop function of the DAW.

7. Assignment section

TRACK button-Activate the track parameters of the software

PAN/SURROUND/EQ/Send/Plug-in/Instrument buttons-These buttons are used to activate the corresponding effect function of the DAW. They are typically used in conjunction with the rotary encoder knobs. Press the button, its light will turn on, and then rotate the rotary encoder knob to adjust the value.

8. LED color-coded function buttons

This section of 8-control buttons are LED color-coded for different functions on each layer. Switch between the layers using the 5-round buttons located above. They include red, green, blue, purple and yellow. Press any one of the round buttons to switch between the function layers. Please place the correct PVC overlay which corresponds to your current DAW to show the function for each button on each color layer. Please refer to your DAW manual for more information about the terms and functions listed.

Rear Panel Layout



1. USB 3.0 port

Functions as a MIDI port to your computer and compatible software. This port also provides power to your PlatformNano.

2. User A / User B ¼ inch inputs

These ¼ inch inputs are able to connect to foot pedals to activate selected functions in your DAW. To set their parameters, select USER A and USER B parameters in Mackie control mode.

3. 3. USB port (mini)

If your computer's USB port is not able to provide sufficient power to drive PlatformNano, you may connect an external power adapter (5V DC) such as your mobile phone charger to provide extra power for the device. This is also used to recharge your PlatformNano-M1 Wireless and power module.

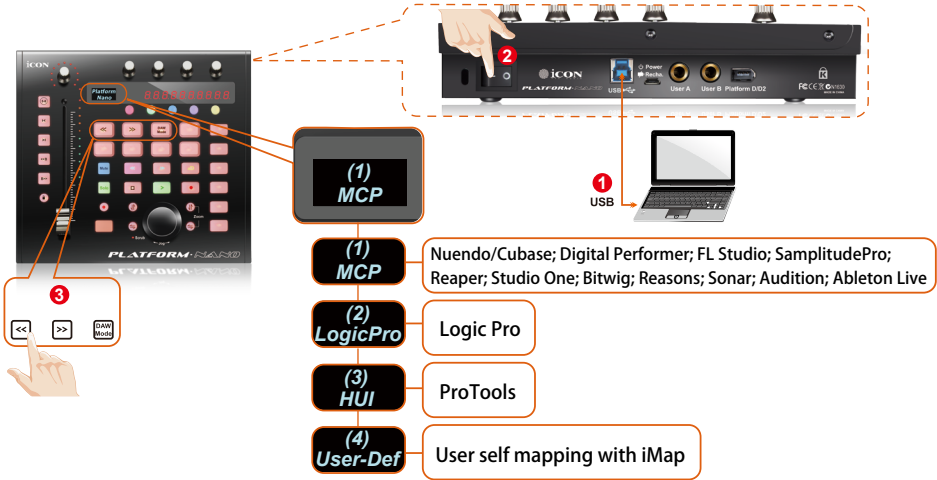
(Note: Please make sure a 5V(DC) power adapter is being used (normally your mobile phone charger is a 5V(DC) power adapter), if incorrect power voltage adapter is used damage may caused to your device.)

4. PlatformD3 LCD module connector

Connect your optional PlatformD3 LCD display module to this connector with the provided cable.

Getting Started

Connecting Your PlatformNano Controller



1 Connect the PlatformNano to your Mac/PC via the USB port

Choose a USB port on your Mac/PC and insert the wide (flat) end of the USB cable. Connect the cable's other end to the PlatformNano. Your Mac/PC should automatically "detect" the new hardware and notify you that it is ready to use.

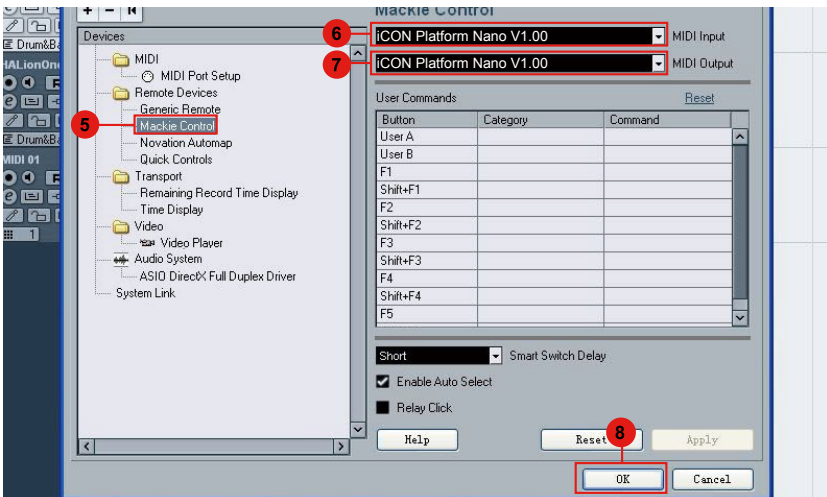
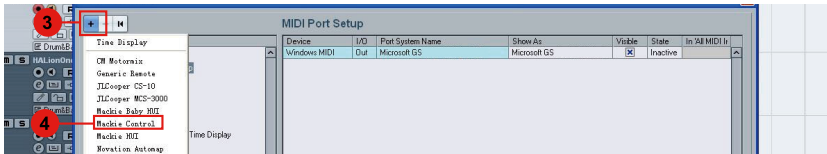
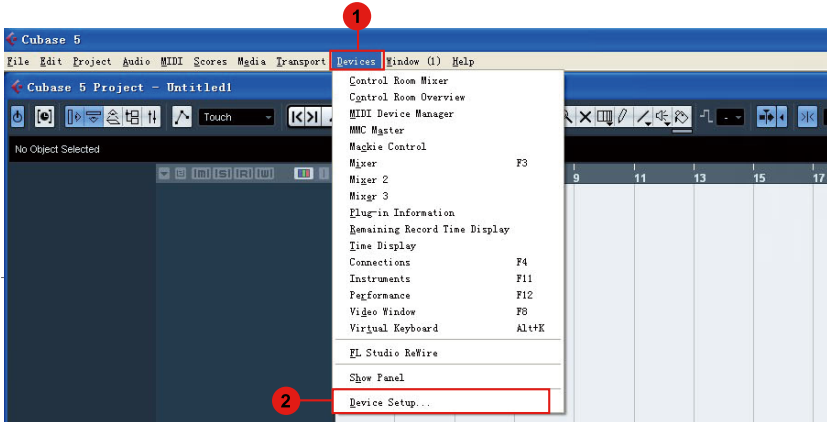
2 Setup your DAW

Activate the ICON PlatformNano controller in your DAW or MIDI software using "MIDI Setup" or "MIDI Devices".

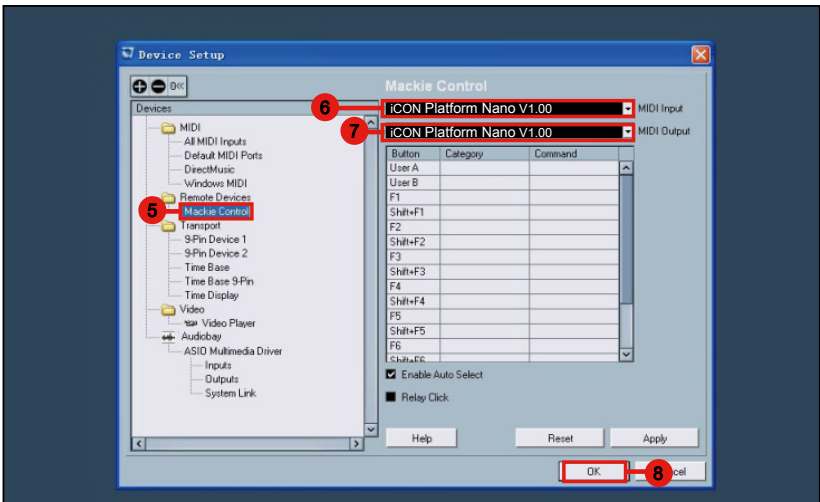
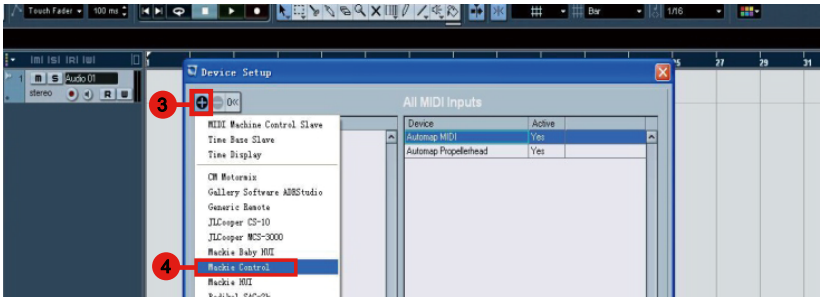
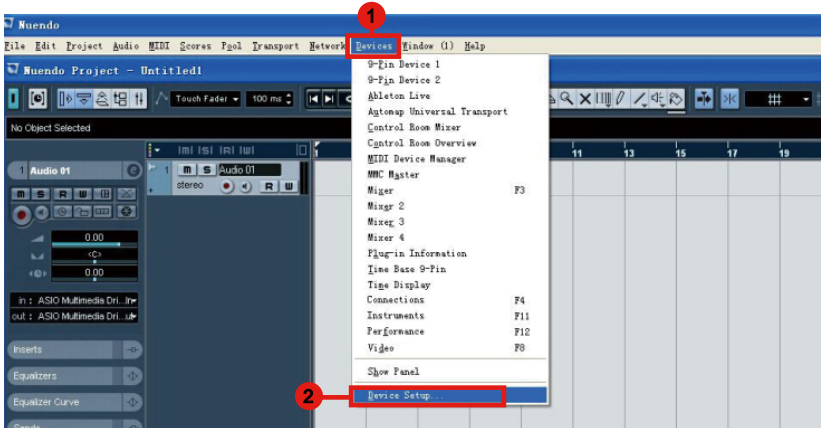
Select MCP for Nuendo/Cubase, Digital Performer, FL Studio, SamplitudePro, Reaper, Studio One, Bitwig, Reasons, Audition, Sonar, Ableton Live, Digital Performer select Mackie Control. Select HUI for Pro Tools.

3 Select Logic Pro for Logic Pro.

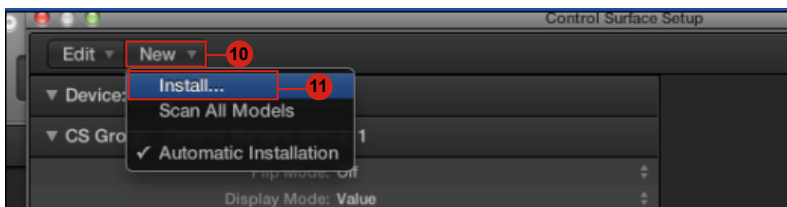
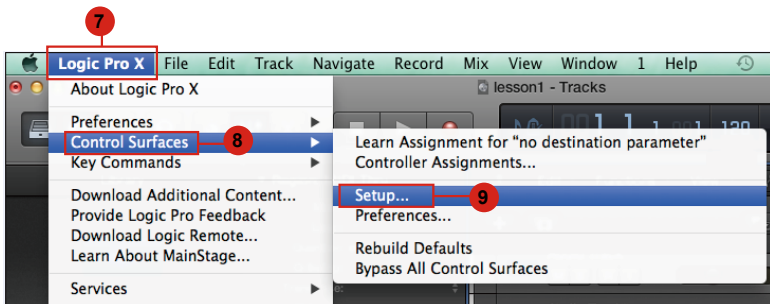
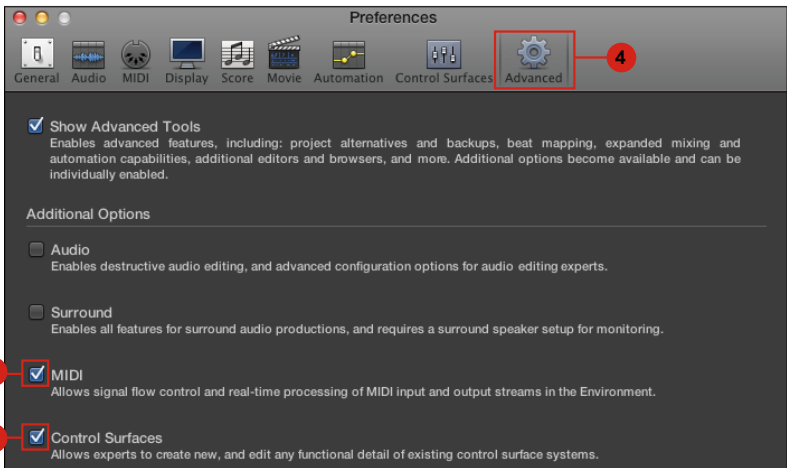
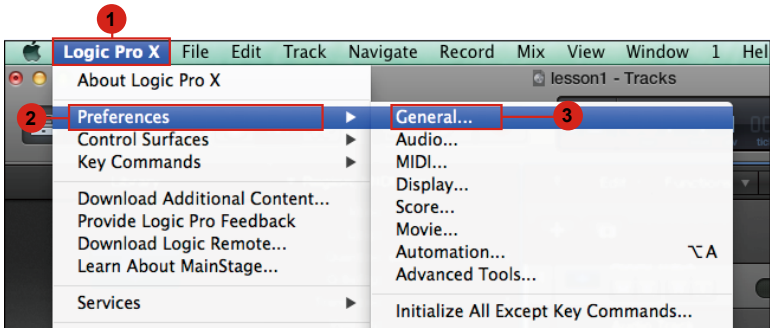
(Note: Every application does this a little differently, so refer to your software user manual for the settings.)

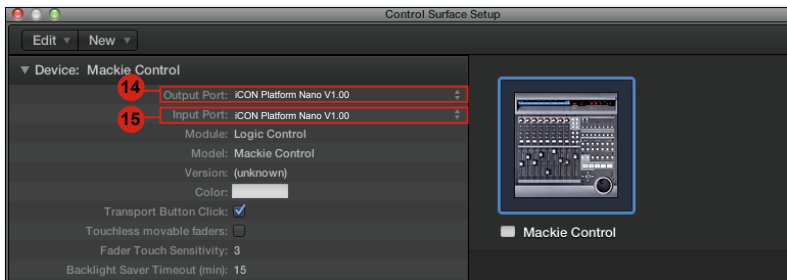
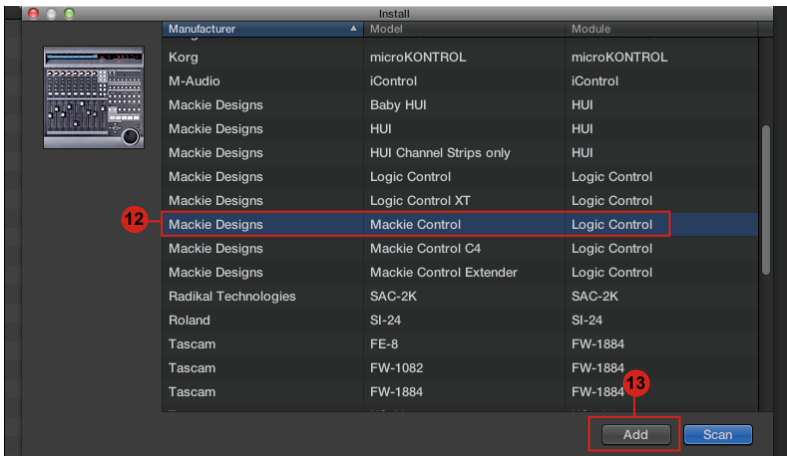


Nuendo

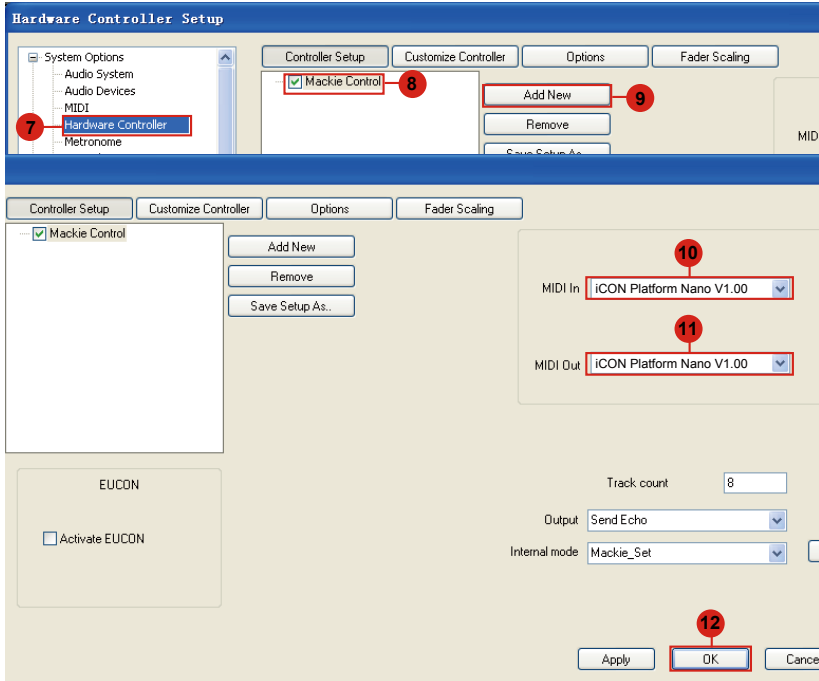
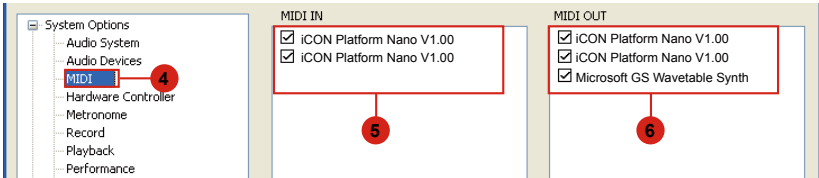
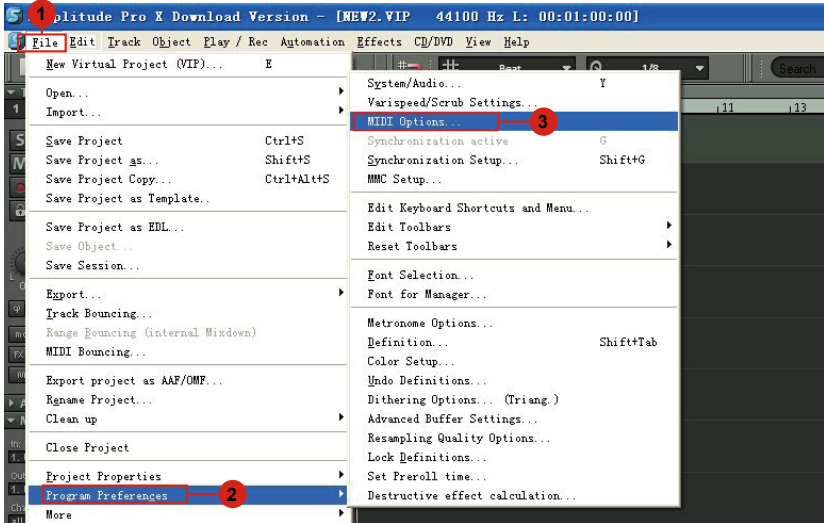


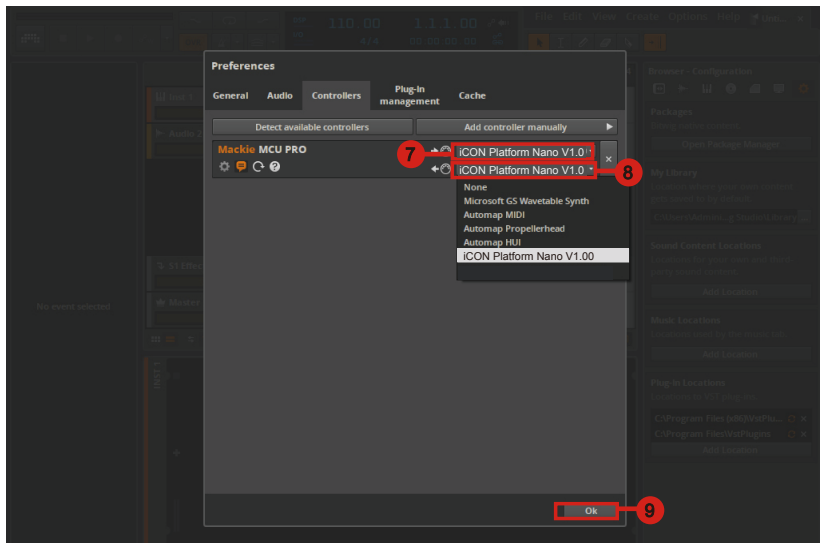
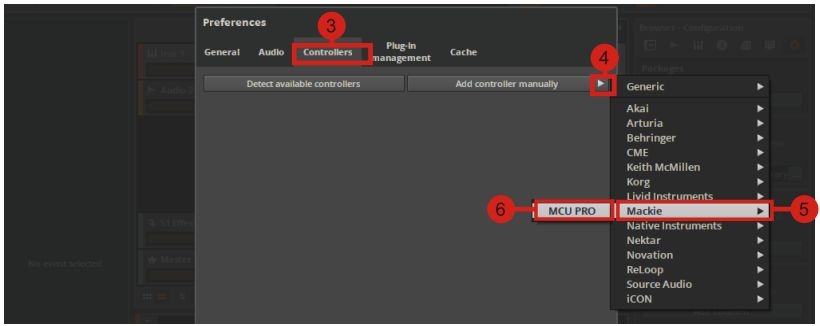
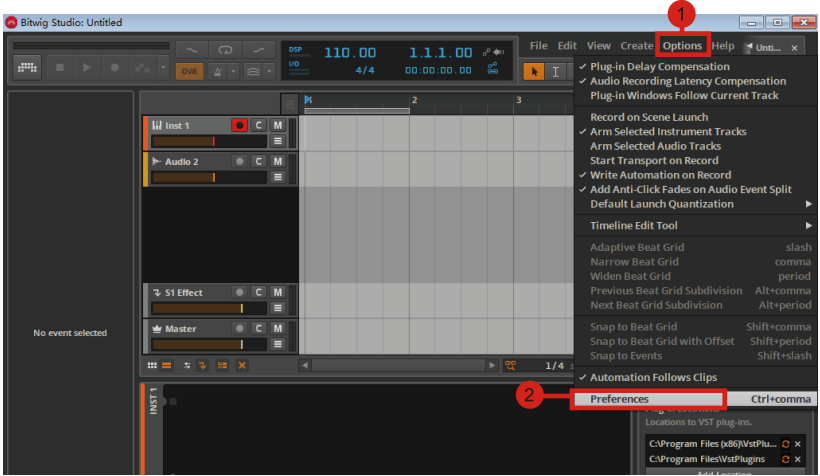
Logic Pro



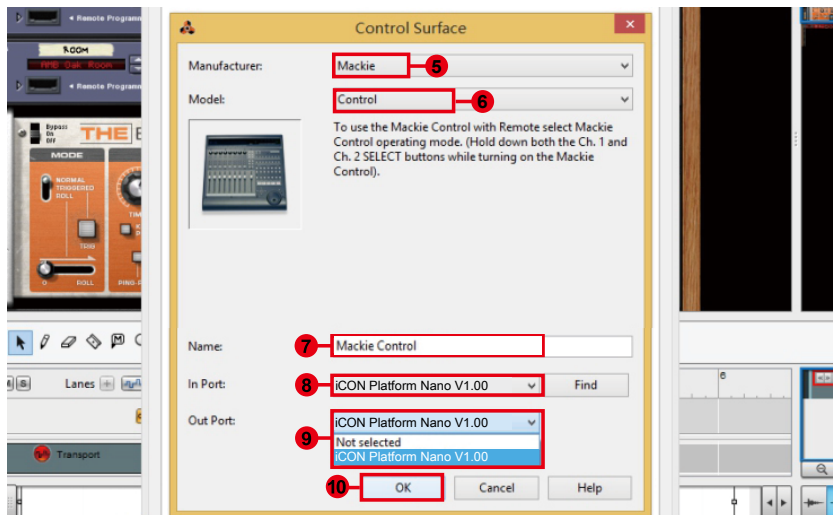
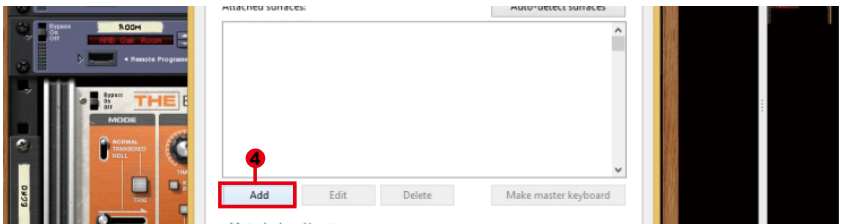
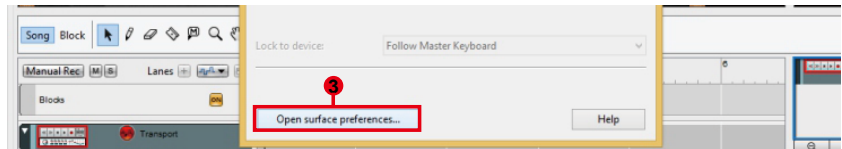
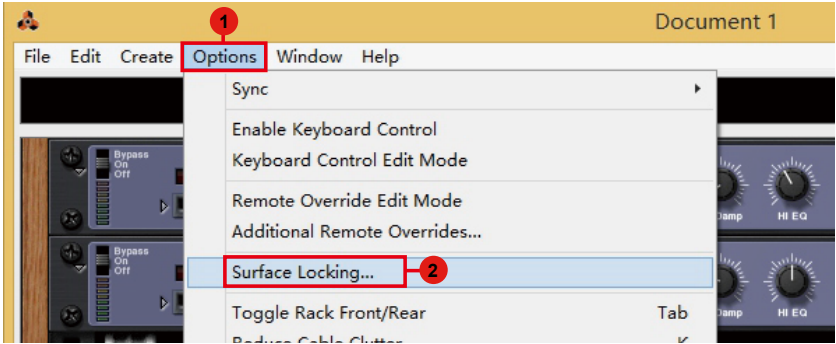


Samplitude

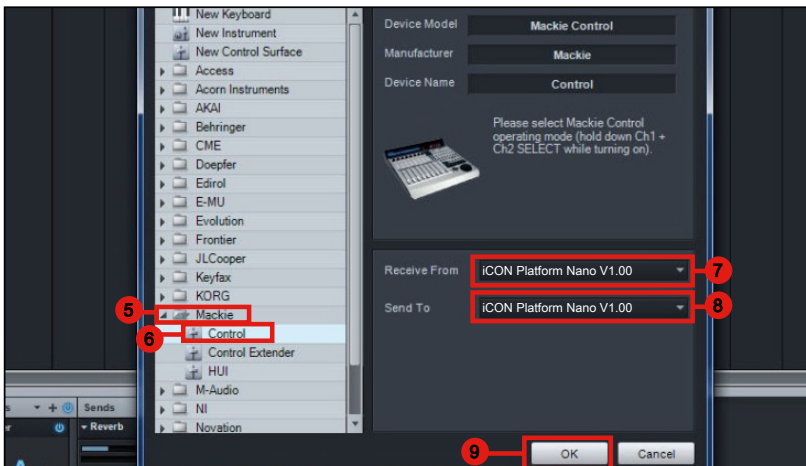
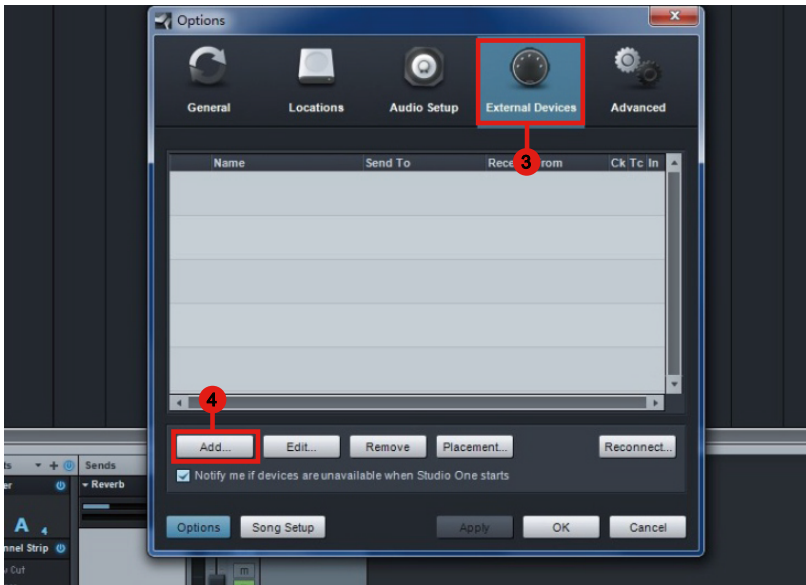
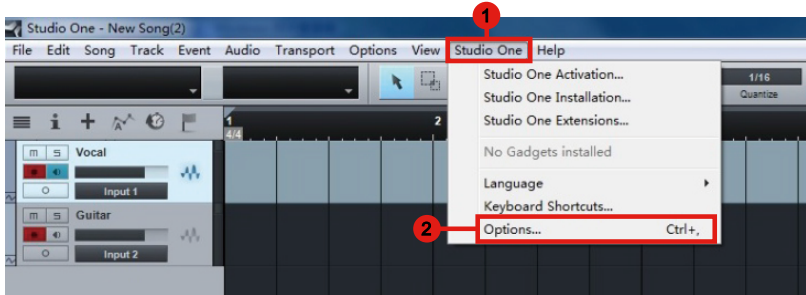




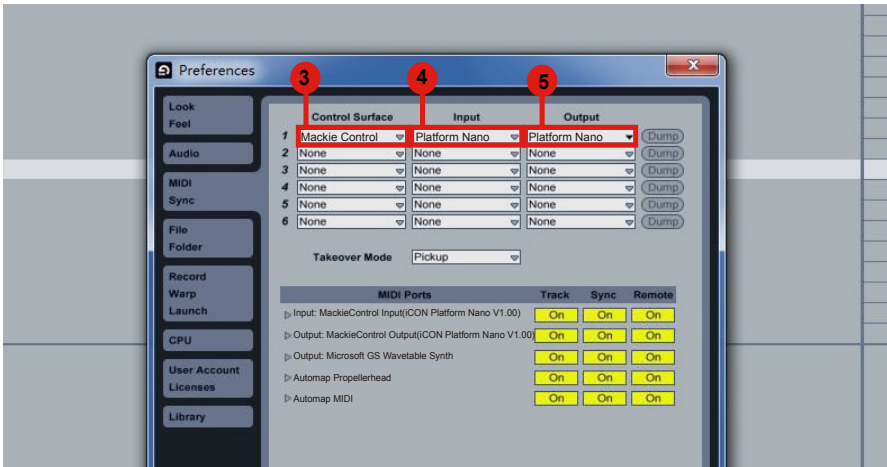
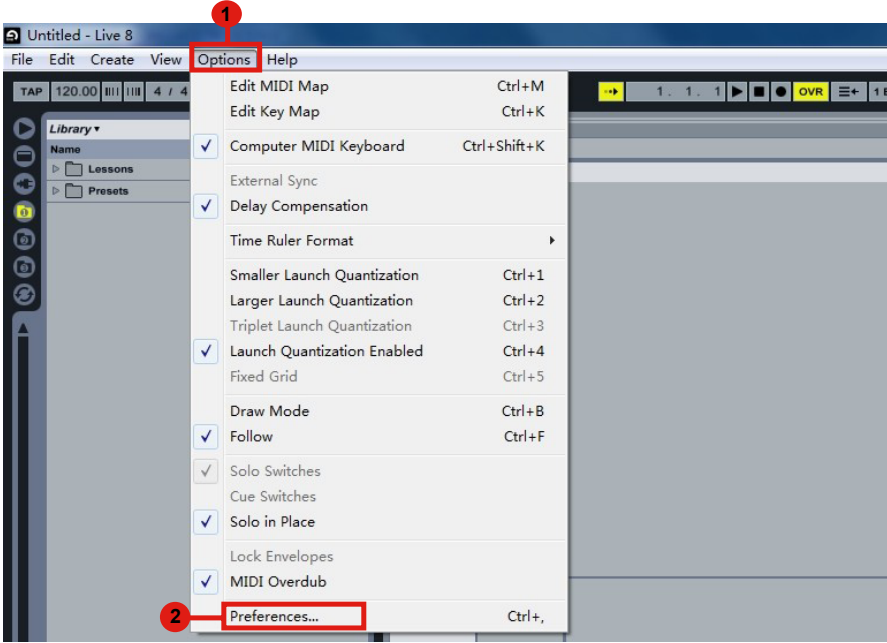
Reason



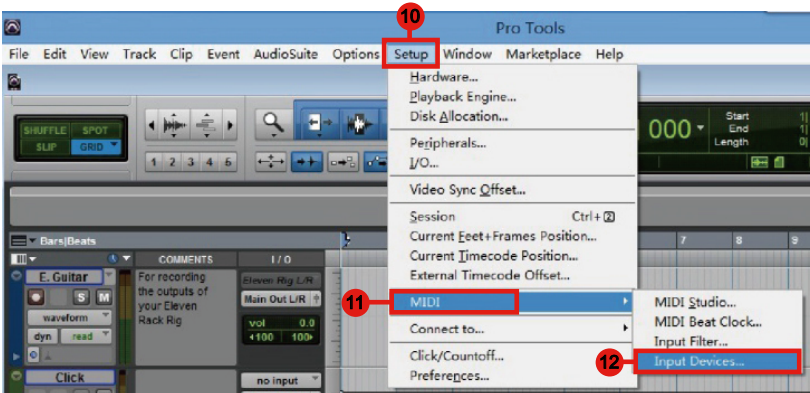
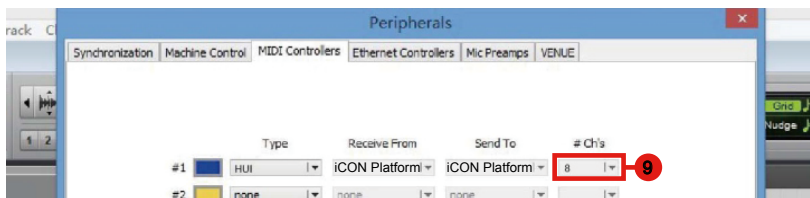
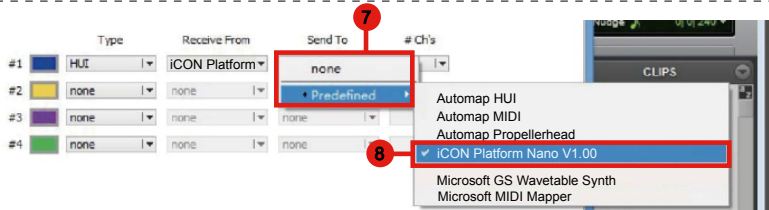
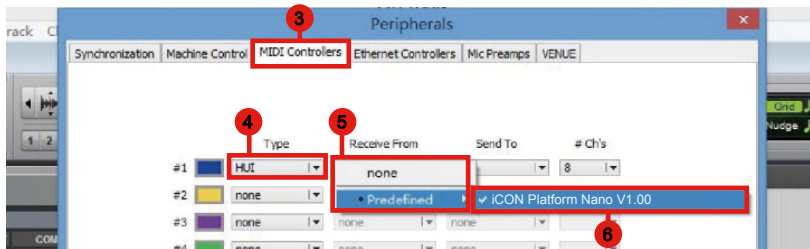
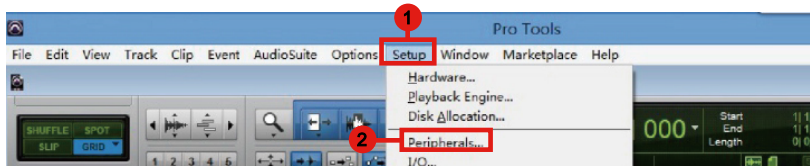
Studio One



Ableton Live



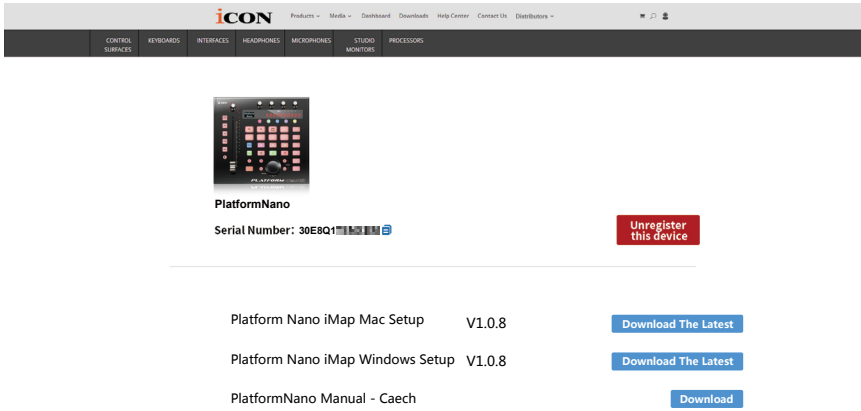
Pro Tools





Download the Mac iMap from your Personal User Page at www.iconproaudio.com

After you downloaded the file, please click it to start the installation process.



PlatformNano
Serial Number: 30E8Q1

[Unregister this device](#)

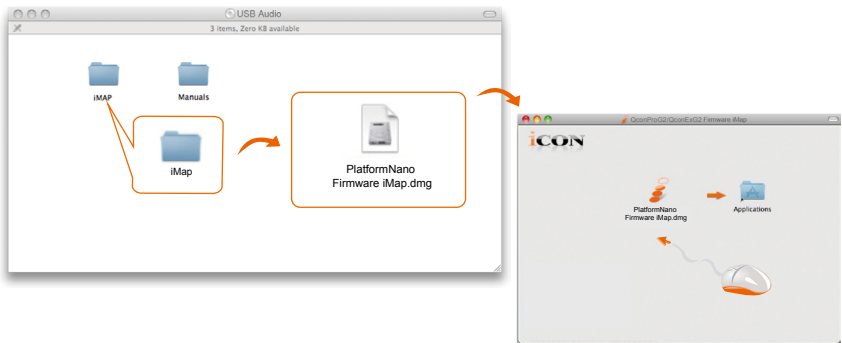
Platform Nano iMap Mac Setup V1.0.8 [Download The Latest](#)

Platform Nano iMap Windows Setup V1.0.8 [Download The Latest](#)

PlatformNano Manual - Caech [Download](#)

1. iMap™ Software for Mac OS X

Please follow the procedures below step-by-step to launch your iMap™ software to Mac OS X



Tip: By “drag and drop” the “PlatformNano” icon into the “Applications” folder, you could create a “iMap” shortcut on your Mac’s desktop.

Installing iMap™ Software for Windows

Please follow the procedures below step-by-step to install your iMap™ software.

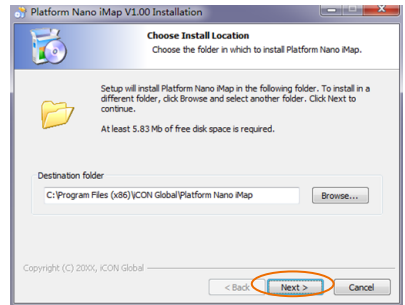
1. Turn on your PC.

2. Download the Mac iMap from your Personal User Page at www.iconproaudio.com

After you downloaded the file, please click it to start the installation process.

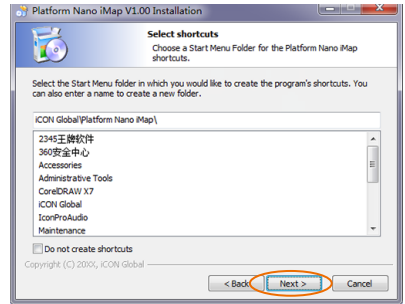
3. The Setup Wizard will appear

Setup wizard appears, please click "Next"



4. Choose Install Location

Choose your preferred install location for iMap™ or use the default location and click "Next"

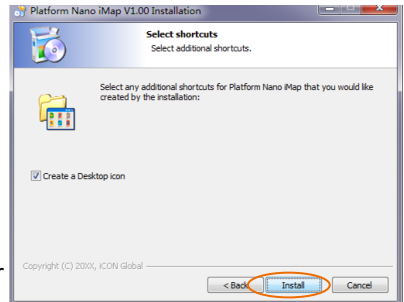


5. Select shortcut

Select the start menu folder in which you would like to create the iMap™ shortcut. Then click "Next"

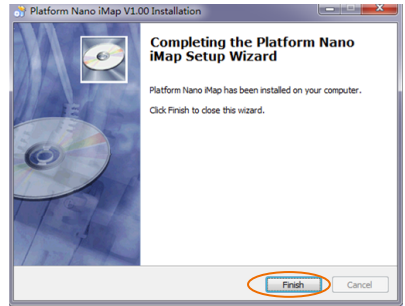
6. Create a shortcut on your desktop

Please uncheck the box if you do not want to place a shortcut icon on your desktop for iMap™, otherwise click "Next".



7. iMap™ begins installation

The iMap™ installation has now started, wait for it to finish. Then click “Finish”.



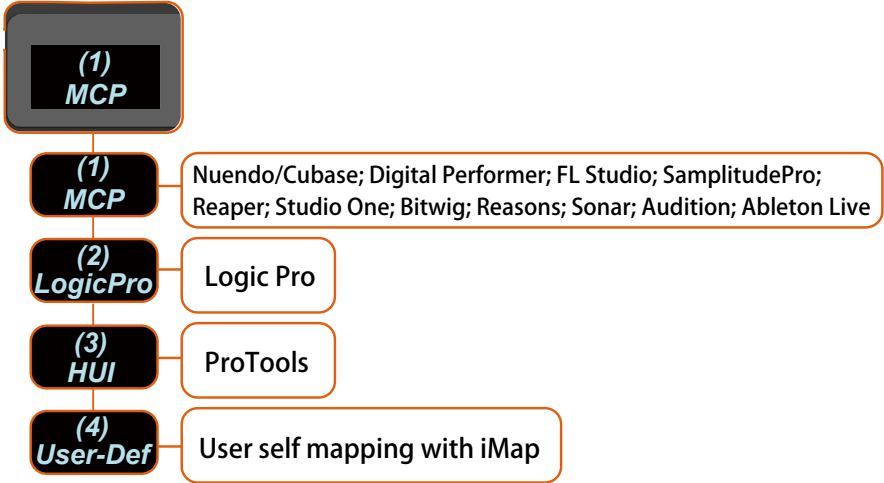
8. Installation finished

Click “Finish” to complete the iMap™ software installation.



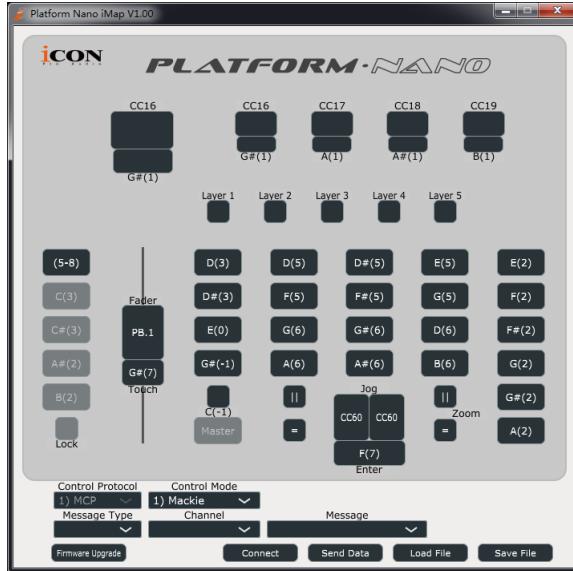
Assigning DAW mode (Mackie Control/HUI) or self define MIDI functions with iMap™

There are two different methods for setting your PlatformNano depending on your needs. In general, it would be much simpler and faster to set the device with Mackie Control, Logic or HUI protocol depended on your DAW.



Or you could define each control element on your PlatformNano with your own MIDI messages as provided on the iMap's function pull-down menu. However, unless you are fully understand the MIDI structure of your DAW otherwise this could be a real hassle to set up. Actually we **STRONGLY** recommend you use the Mackie Control, Logic or HUI control mode as they are programmed according to the most common user preferences and it will most likely suit your needs.

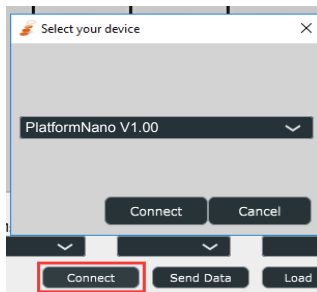
Assigning DAW mode (Mackie control/HUI) with iMap™



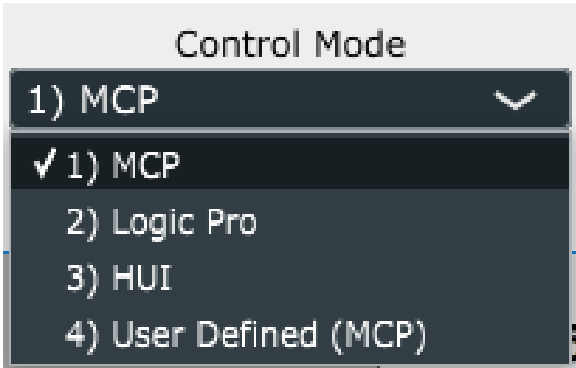
iMap™ PlatformNano software panel

To begin the DAW mode setup, let's connect your PlatformNano with iMap. Please follow the steps below:

1. **Connect PlatformNano to your Mac/PC.**
2. **Launch iMap and click “Connect Device” button.**
Note: If your PlatformNano is not connected to your Mac/PC, the message “There are no MIDI input devices” will appear. Please connect PlatformNano to your Mac/PC with the provided USB cable.
3. **Select “PlatformNano ” at the pop-up menu as your MIDI out device.**



4. Select the proper mode for your DAW at the “Control Mode” pull-down menu.

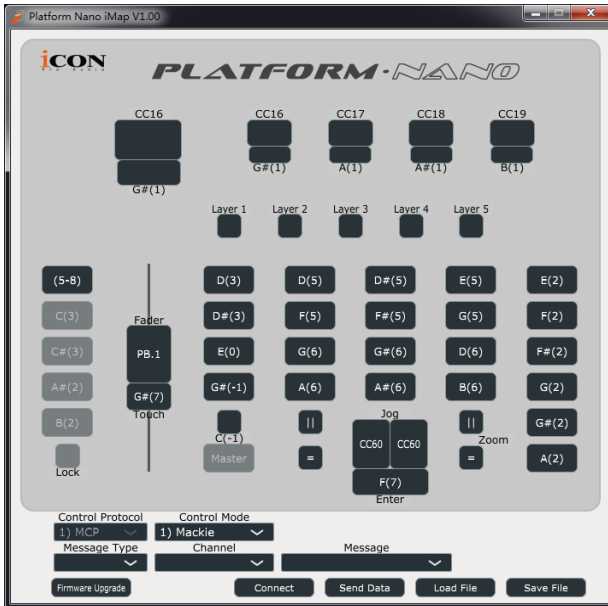


Note: In DAW mode (Mackie Control/HUI/LogicPro), you cannot change any MIDI message settings for any control on PlatformNano.

Tip: You may also use the hardware to select DAW mode instead of using the iMap. Please refer to P. 9 for instructions.

5. After you have finished all settings, click on "Send Data" button.
6. Close iMap.

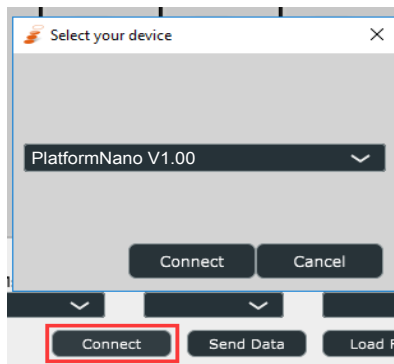
Assigning MIDI message with User Defined mode at iMap™



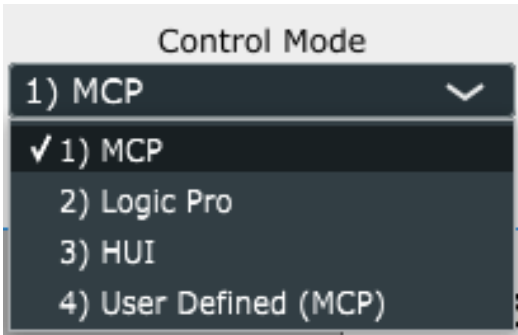
iMap™ PlatformNano Software panel

To begin the “User defineds” mode setup, please follow the steps below:

1. **Connect PlatformNano to your Mac/PC.**
2. **Launch iMap and click the “Connect Device” button.**
3. **Select “PlatformNano” at the pop-up menu as your MIDI out device.**



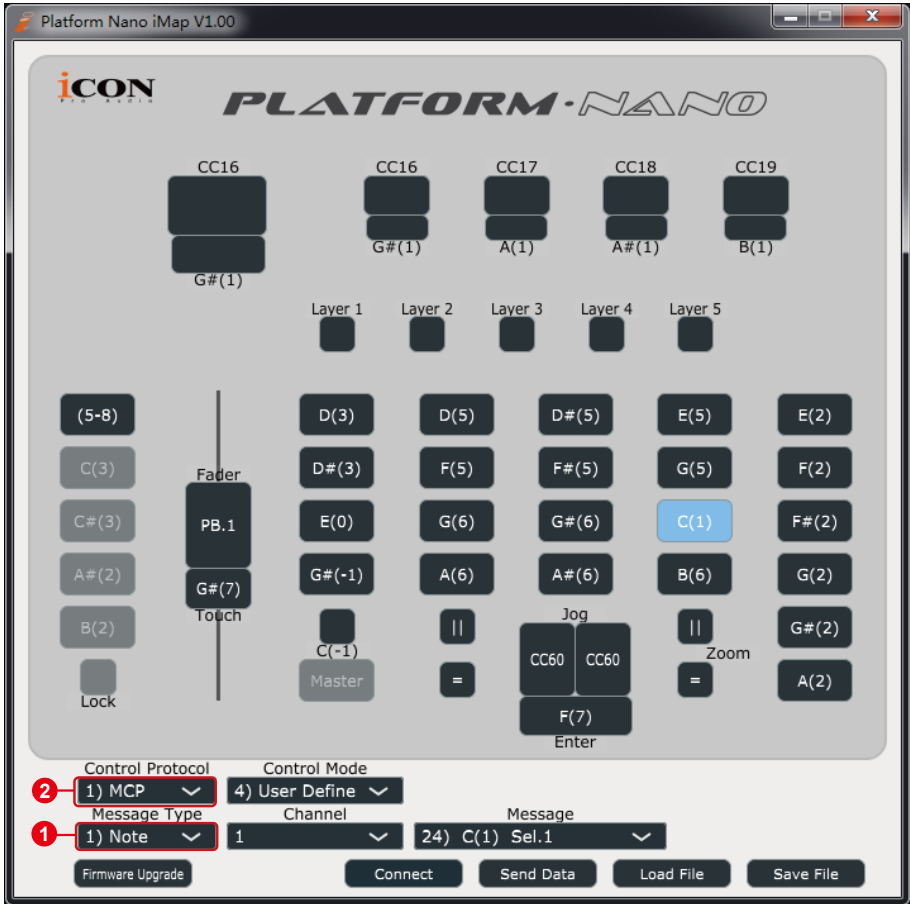
4. Select “User-Defined Mode” at the “Control Mode” pull-down menu.



5. After you have finished all settings, click “Send Data” button.
6. Close iMap.

Control element setup at User defined mode

iMap™ PlatformNano Software panel

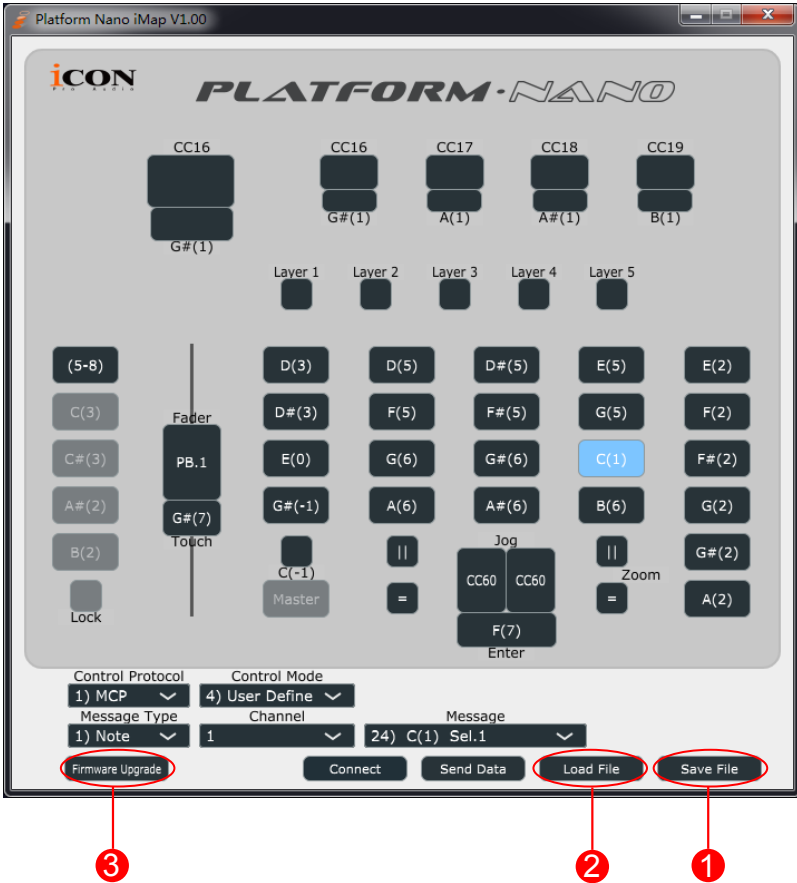


There are controls including faders, knobs, buttons, and a jog wheel on PlatformNano for which you may set your own MIDI messages. You may adjust different types of message include “Pitch”, “Note”, “CC”, “Channel” and “Message” values for MCP and “Value 1”, “Value 2” and “Function” for HUI, depending on the control element.

Also, according to your DAW, select the correct control protocol (MCP/ HUI/ LogicPro) for your DAW to establish communication between your PlatformNano and the DAW. Please refer to below the table below for the suggested control protocols for different DAW's

Control Protocol	DAW
MCP	Nuendo/Cubase; Digital Performer; FL Studio; Reaper; Reason; SamplitudePro; Studio One; Bitwig; Sonar; Audition; Ableton Live
Logic Pro	Logic Pro
HUI	ProTools
User Define	User self mapping with iMap

Other Functions in iMap™



1. “Save file” button

Click this button to save your current settings for the PlatformNano. The file is an. “imap” file.

2. “Load file” button

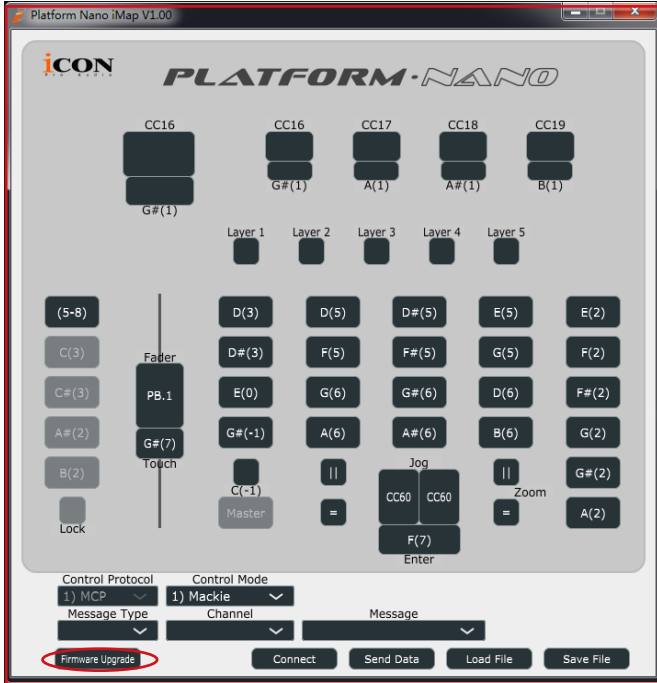
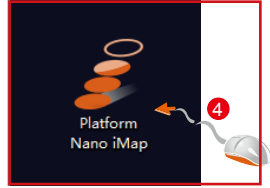
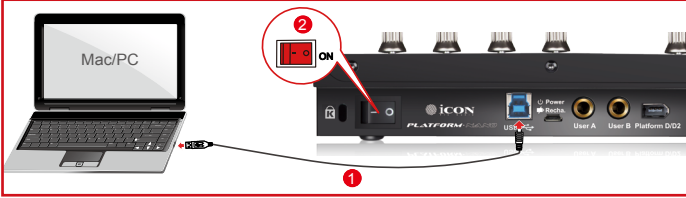
Click this button to load a previously saved “.imap” setting file for your PlatformNano.

3. “Firmware Upgrade” button

Click this button to enter into the firmware upgrade window for PlatformNano. Please refer to P. 45 for the firmware upgrade procedure.

Firmware upgrade

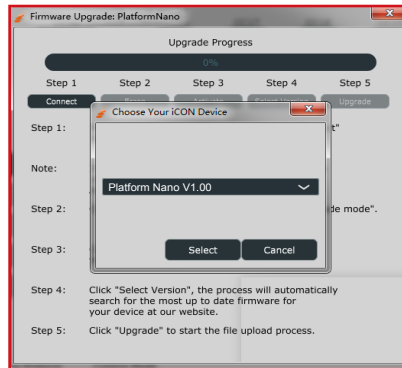
PlatformNano functional firmware upload procedure



Warning: The firmware upload process **MUST** be completed and not interrupted during the file upload, otherwise the firmware may not be rewritten again.

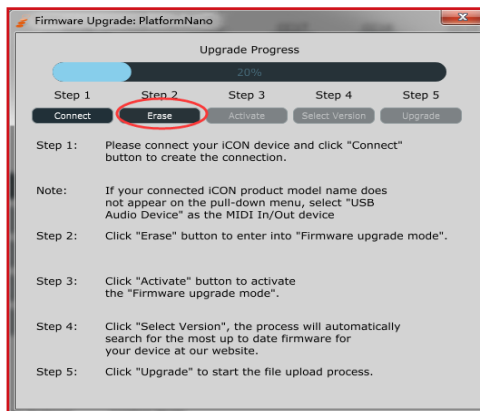


Step 1: Connect the PlatformNano using a USB connection. Press the “MIDI Device” button at the top to select your connected PlatformNano as the “MIDI In and Out” device in the pull-down menu.

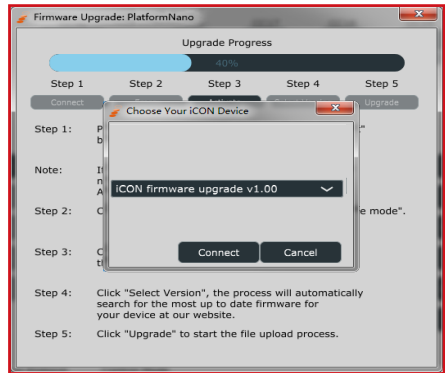
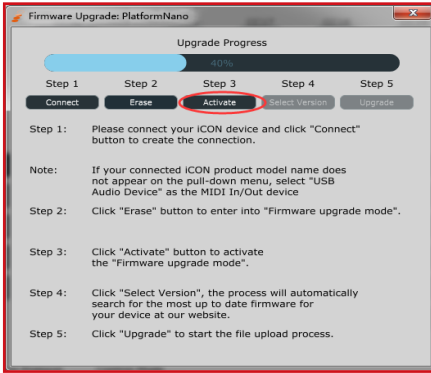


Note: If your connected name “PlatformNano” does not appear on the pull-down menu, select “USB Audio” as the MIDI In and Out device.

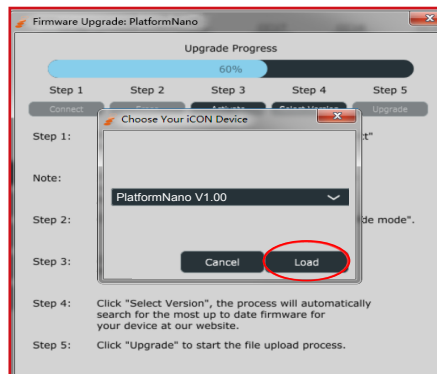
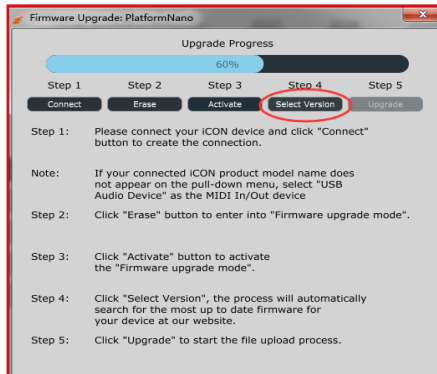
Step 2: Click the “Update” button.



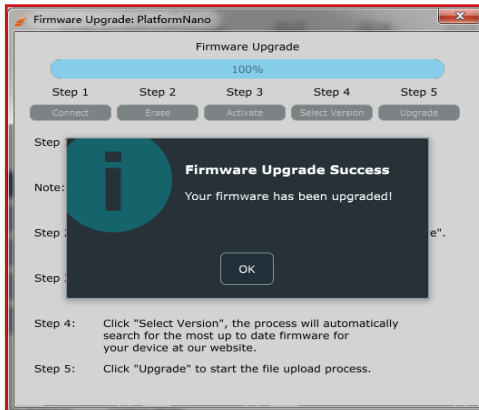
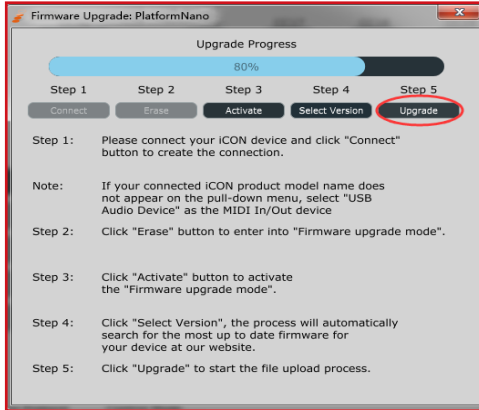
Step 3: Press the “MIDI Device” button at the top to select PlatformNano as the “MIDI In and Out” device at the pull-down menu.



Step 4: Click the “Open File” button to browse the new firmware file.



Step 5: Click the “Download” button to upload the firmware.



Restore the factory default settings

To restore your PlatformNano settings to factory default, simply launch iMap and import the original setting (i. e. without making any changes) to the device by the following steps.

1. Connect PlatformNano with the provided USB cable and launch iMap software.
2. Click the “Connect” button and select “PlatformNano” as the MIDI input and output device.
Note: *If PlatformNano does not appear on the pull down menu, select USB audio as the MIDI I/O device.*
3. Click “Send Data” to upload the setting to your PlatformNano.
4. Close iMap, and then turn the PlatformNano power of off & on again.

Specifications

Connector:	To computer	USB 3.0 connector
Power supply:	5V DC	
Current consumption:	0.9A or less	
Weight:		1.3kg (2.8lb)
Dimensions:		215(L) x 198(W) x 40(H)mm 8.5"(L) x 7.8"(W) x 0.2"(H)

Services

If your PlatformNano needs servicing, follow these instructions.

Check our online help centre at <http://support.iconproaudio.com/hc/en-us>, for information, knowledge, and downloads such as:

1. FAQ
2. Download
3. Learn More
4. Forum

Very often you will find solutions on these pages. If you don't find a solution, create a support ticket at our online Help Center at the link below, and our technical support team will assist you as soon as we can.

Navigate to <http://support.iconproaudio.com/hc/en-us> and then sign in to submit a ticket.

As soon as you have submitted an inquiry ticket, our support team will assist you to resolve the problem with your ICON ProAudio device as soon as possible.

To send defective products for service:

1. Ensure the problem is not related to operation error or external system devices.
2. Keep this owner's manual. We don't need it to repair the unit.
3. Pack the unit in its original packaging including end card and box. This is very important. If you have lost the packaging, please make sure you have packed the unit properly. ICON is not responsible for any damage that occurs due to non-factory packing.
4. Ship to the ICON tech support center or the local return authorization. See our service centers and distributor service points at the link below:

If you are located in North America

Send the product to:

ICON Service Centre
611 Potomac PL Ste 102
Smyrna, 37167-5655 Tennessee.
United States
Tel. : +1 615 540 989

If you are located in Hong Kong

Send the product to:

ASIA OFFICE:
Unit F, 15/F. , Fu Cheung Centre,
No. 5-7 Wong Chuk Yueng Street,
Fotan,
Sha Tin, N. T. , Hong Kong.

If you are located in Europe

Send the product to:

Sound Service
GmbH European
Headquarter Moriz-Seeler-Straße
3D-12489 Berlin
Telephone: +49 (0)30 707 130-0
Fax: +49 (0)30 707 130-189
E-Mail: info@sound-service.eu

5. For additional update information please visit our website at:

www.iconproaudio.com



<p>天猫官方旗舰店</p>  <p>天猫店iconproaudio旗舰店</p>	<p>抖音号</p>  <p>抖音iCON艾肯</p>	<p>哔哩哔哩</p>  <p>B站iCONProAudio</p>	<p>微信公众号</p>  <p>微信号iCON-PRO</p>	<p>官方售后00</p>  <p>4006311312.114.qq.com</p>
--	--	---	---	--

中国地区用户

<p>Twitter</p>  <p>www.twitter.com/iconproaudio</p>	<p>Instagram</p>  <p>www.instagram.com/iconproaudio</p>	<p>Facebook</p>  <p>www.facebook.com/iconproaudio</p>	<p>Youtube</p>  <p>www.youtube.com/iconproaudio</p>
--	--	---	--

<p>Website</p>  <p>www.iconproaudio.com</p>	<p>Support</p>  <p>support.iconproaudio.com</p>	<p>Dashboard</p>  <p>iconproaudio.com/dashboard/</p>
---	---	---

www.iconproaudio.com