

CM4 built-in loudspeaker

CM4



The CM4 is a stylish small built-in low impedance loudspeaker. Thanks to its halogen-spot size, it can be integrated into any interior style. It is ideal for speech and background music in quiet areas, toilets, cloakrooms, ... The speaker has a full metal frame, a metal back can and a coated dual paper cone for the lowest distortion and increased resistance against moisture. The CM4 is easy to install thanks to its simple, quick mounting system (2 spring clamps).

Safety precaution

- Keep this manual for future reference.
- When cutting the mounting hole for the speaker, make sure there is sufficient clearance behind the panel (no obstructions like A/C channels, power lines etc).
- Take care of your speaker wires, they should be free of damage. Damaged speaker wires might result in poor sound quality and can damage amplifiers.
- Only use accessories specified by the manufacturer
- Make sure the mounting panel can support the speakers weight.
- Use sufficient amount of speakers to avoid dead spots.
- No mains power shall be connected to the loudspeakers, doing so will damage the speaker.
- This apparatus should only be serviced by qualified personnel. If not warranty might be void.
- Use cable of the right gauge, certainly for long runs.
- Use cables with clear color indication and maintain polarity throughout the whole system.
- Avoid loud feedback from microphones, this can damage your speaker.
- Please check the units condition after unpacking. If the outside of the carton box has been damaged, inform your shipper immediately.

Warranty info

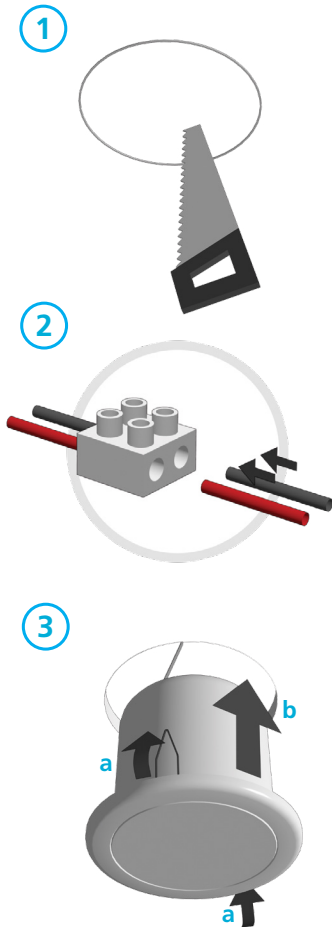
Warranty claims and claims for hidden defects can be considered only if the defects appear within the warranty period of 24 months and are notified within 8 days following their appearance per registered letter. The warranty is not valid in case of an incident, wear, for moving parts, power surges, inadequate packing

or shipping, improper use or storage and the disregard of recommendations of Audioprof. The warranty only concerns the spare parts and not the involved labor, transportation or any other costs. The product must be returned in the original packaging with the proof of purchase by an Audioprof authorized reseller.

The general terms and conditions can be found here:

http://www.apart-audio.com/conditions/General_Terms_and_Conditions_Audioprof.pdf

Mounting the loudspeaker



The loudspeaker is easy to install, due to its simple mounting system.

(1) Cut out the mounting hole diameter = 108 mm. When making the hole in your mounting panel, double check if there are no cables or any other obstructions behind the mounting panel. Cutting the mounting panel without this check might result in damaged infrastructure or power lines. Please make sure that the mounting structure is capable of safely supporting the speaker's weight.

(2) Connect the speaker wires.

(3) Insert the speaker in the pre-cut speaker opening: **(a)** pull the 2 spring clamps backwards and **(b)** carefully slide the speaker in place until it sits firmly.

Technical specifications

outside diameter	135 mm
depth	107 mm
cutout	108 mm
loudspeaker system	dual cone
woofer size	4 inch
woofer cone material	paper
mounting system	2 springs
impedance	16 ohms
low impedance dynamic power	30 watts

SPL 1W/1m	88 dB
max SPL 1m	103 dB
frequency response	100 - 20 kHz
main construction material	steel
grille main material	aluminium
IP rating	60
applicable low impedance	yes
applicable in 100V / 70V	no
dispersion angle 1000 Hz	180°