

EUROLIVE B115W/B112W

Active 2-Way 15"/12" PA Speaker Systems with Bluetooth Wireless Technology, Wireless Microphone Option and Integrated Mixer

- High-Power 1000-Watt 2-way PA sound reinforcement speaker system for live and playback applications
- Ultra-compact and lightweight system delivers excellent sound even at extreme sound pressure levels
- High-performance Bluetooth* A2DP technology to stream audio wirelessly from any Bluetooth-compatible device
- "Wireless-ready" for high-quality BEHRINGER digital wireless microphone system (not included)
- 2-channel mixer with individual Mic/Line inputs, Volume controls and Clip LEDs
- Dedicated 2-band EQ plus integrated sound processor for ultimate system control and speaker protection
- Revolutionary Class-D amplifier technology: enormous power, incredible sonic performance and super-light weight
- Extremely powerful 15"/12" long-excursion driver provides incredibly deep bass and acoustic power
- State-of-the-art 1.35" aluminum-diaphragm compression driver for exceptional high-frequency reproduction
- Ultra-wide dispersion, large-format exponential horn
- Additional Line output allows linking of additional speaker systems



A portable PA system should be... well, in a word—portable! And easy to use, even for someone who's never plugged-in a microphone. Our engineering team has created two self-contained, easy-to-use PA systems that are compact, lightweight and powerful—plus built-in wireless microphone and Bluetooth connectivity that makes setup a breeze!

Bluetooth Stereo-Ready

The days of tape decks, CD players and even MP3 devices are long gone. Now your music lives on your phone or computer tablet, so you can stop searching for those outdated cables and fancy adapters. Now with a simple wave of your hand, you can stream music from any Bluetooth audio-equipped device such as your iPad, iPod touch, iPhone, even your laptop computer. Plus, two B115W/B112W can provide true stereo performance via their Stereo Link function, making them the first BEHRINGER loudspeakers to offer this capability. Now, isn't that easy?



Built-in Mixer & Wireless Option

Both models feature built-in 2-channel mixers with the same ultra-low noise, high-headroom mic preamps that have made BEHRINGER mixers legendary. Also included is 2-band equalizer, plus Bluetooth for streaming audio directly from your iOS device, and our proprietary ULM wireless technology. Sold separately, BEHRINGER ULM Series digital mics integrate seamlessly to expand your B115W/B112W system to handle virtually any live sound application.

Whether you set your B115W/B112W speakers on a table, or mount them on a pair of optional speaker stands, you'll enjoy music streaming through this rich sounding, easy-to-setup system in mere moments.

Cut the Fat; Keep the Beef

We drew from our considerable experience to build these performance-grade loudspeakers and made them lighter (B115W: 38 lbs./17.2 kg; B112W: 32 lbs./14.5 kg) and more powerful. We started with custom-engineered Class-D power amps for the ultimate in low-distortion power and efficiency. Backed by SMPS (Switch Mode Power Supply) technology, the high-tech alternative to heavy transformers and massive heat sinks, these loudspeakers can run cool all day and all night without even breaking a sweat!

Continued on next page

EUROLIVE B115W/B112W

- Versatile trapezoidal enclosure design allows different positioning:
 - Stand mounting with 35 mm pole socket
 - Tilts on its side for use as a floor monitor
- Ergonomically shaped handles for easy carrying and setup
- High-quality components and exceptionally rugged construction ensure long life
- Conceived and designed by BEHRINGER Germany

Power and Control

There is absolutely no substitute for amplifier power in high-performance loudspeakers; the kind of power it takes to deliver clean, in-your-face vocals and chest-thumping bass day in and day out. That's why we gave these bad boys 1000-Watts of bi-amplified, digitally processed output power.

Custom-Engineered Transducers

Powerful, high-efficiency Class-D amplifiers and Switch Mode Power Supply technology coupled with state-of-the-art DSP functionality sure sounds impressive—but what about the part of the system you actually hear? We never cut corners on our transducers (woofers and tweeters), and we never just pull what we have off the shelf. Our LF (Low Frequency) and HF (High Frequency) transducers are designed specifically for each application—it's what sets us apart from the competition.

When you buy a BEHRINGER active loudspeaker, you can rest assured that the transducers inside have been engineered to perform flawlessly in conjunction with every other element for truly professional results. B115W and B112W active speaker systems crank out massive quantities of low end, with articulate, detailed mids and crystal-clear highs.

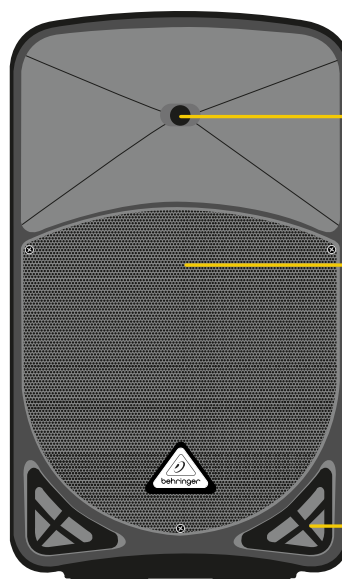
Extraordinary Versatility

Thanks to its trapezoidal shape, the B115W and B112W are suitable for a wide variety of applications. They can be mounted on standard speaker poles, placed vertically atop subwoofers, or even laid on their side for use as onstage monitor wedges. Their extraordinary fidelity and frequency response make them a favorite of vocalists and instrumentalists alike. Hook up is simple, requiring only a single XLR or ¼" cable from your mixing console and power. Additional monitors can be chained together via the XLR Mix Output jack on the rear panel.

Which Speaker Should I Buy?

Well, let's start with your application... are you giving a speech in a hotel ballroom—or rocking out at the local bar or dance club? Whether to choose one speaker cabinet over another depends on your bass requirements. A 15" woofer has about 40% more surface area with which to move air than a 12" and that translates into more bass. So if you're addressing a small meeting, or jamming at the coffee house, the B112W might be all you'll ever need. But if you're providing disco in a busy nightclub, hosting Karaoke night in your living room, or just need to crank it up louder, then the B115W may be a better choice.

Continued on next page



1.35" aluminum-diaphragm compression driver in ultra-wide dispersion, large-format exponential horn for exceptional HF coverage

15"/12" long-excursion LF driver for incredibly deep bass and acoustic power

Rugged and ultra-light weight molded enclosure with steel speaker grille

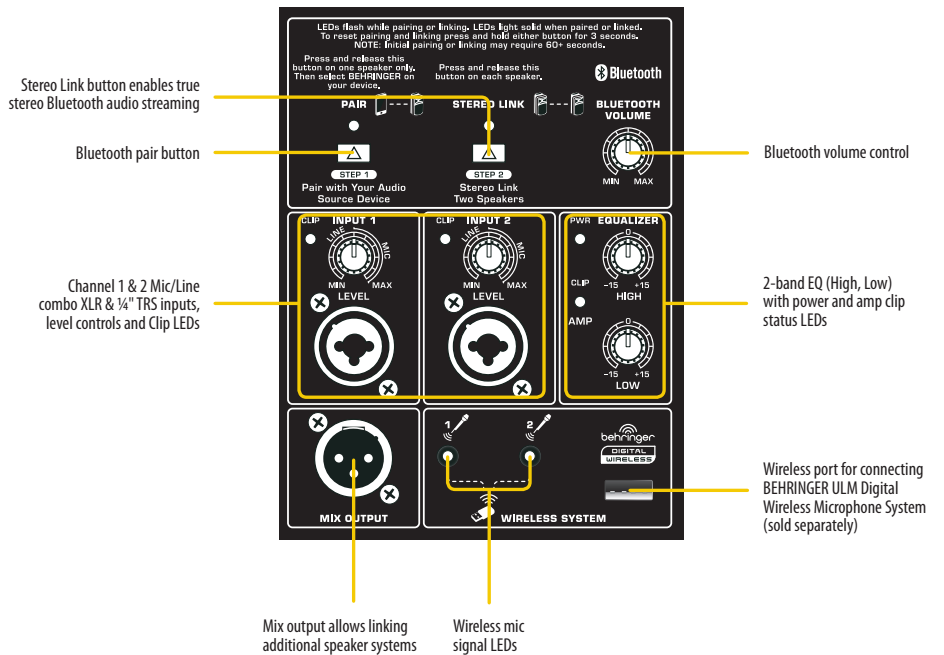
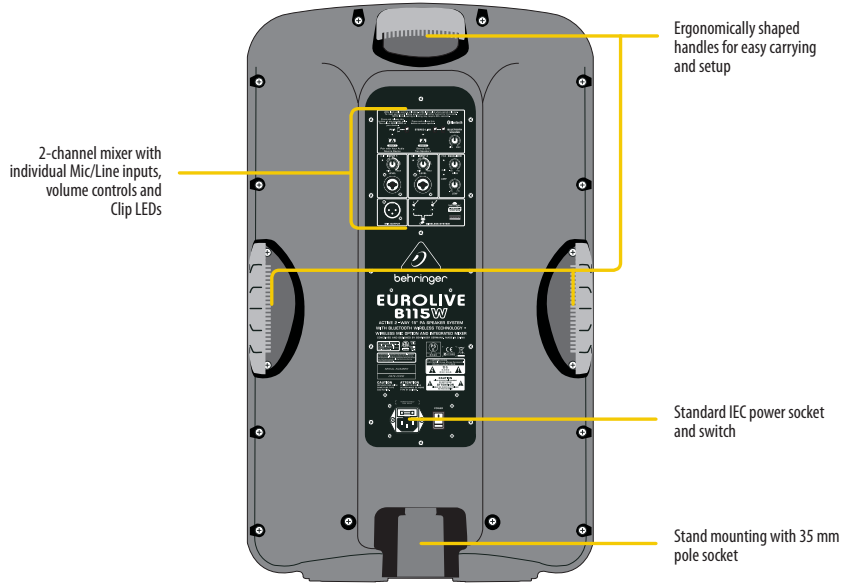
*The Bluetooth® word mark and logos are owned by the Bluetooth SIG, Inc., and any use of such marks by MUSIC Group is under license. iPod touch, iPhone, and iPad are trademarks of Apple Inc., registered in the U.S. and other countries. IOS is a registered trademark or trademark of Cisco Systems, Inc. and/or its affiliates in the United States and certain other countries.

EUROLIVE B115W/B112W

Sound Value

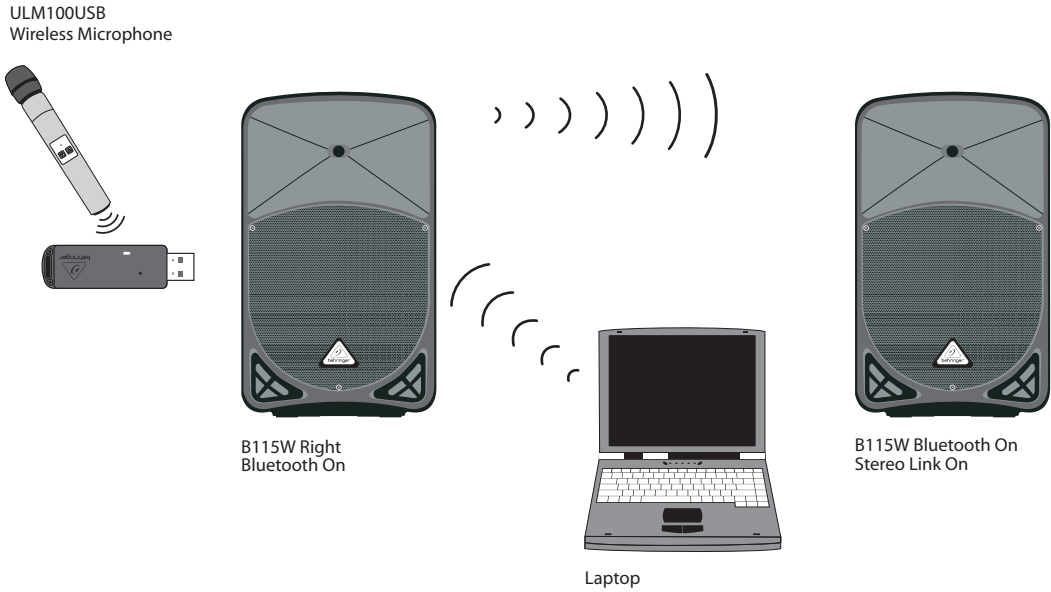
EUROLIVE active PA loudspeakers stand head and shoulders above the rest of the pack and deliver exceptional performance, even when pushed to their limits. Lightweight and powerful, with built-in mixers, custom-designed transducers, and integrated wireless functionality, B115W and B112W active loudspeakers are ideal for both speech and music applications—at a price that is unheard of in this class.

Experience the B115W and B112W at your local dealer today and find out why more and more professionals are turning to BEHRINGER EUROLIVE Series active loudspeakers for their superb performance and extraordinary value.

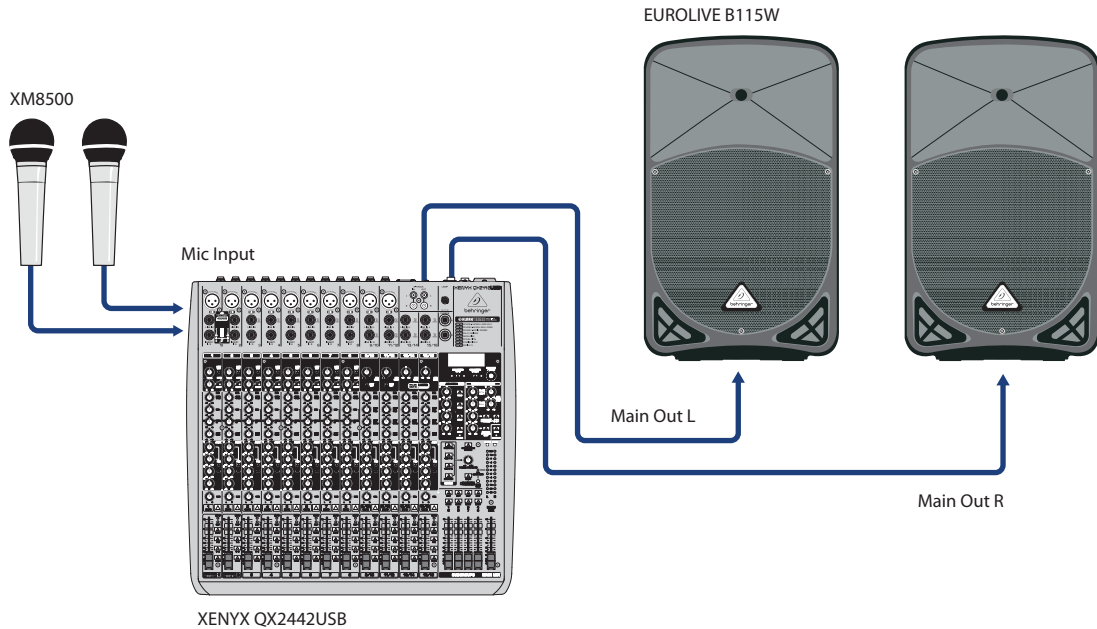


EUROLIVE B115W/B112W

Wireless Presentation Setup with Bluetooth Stereo Streaming

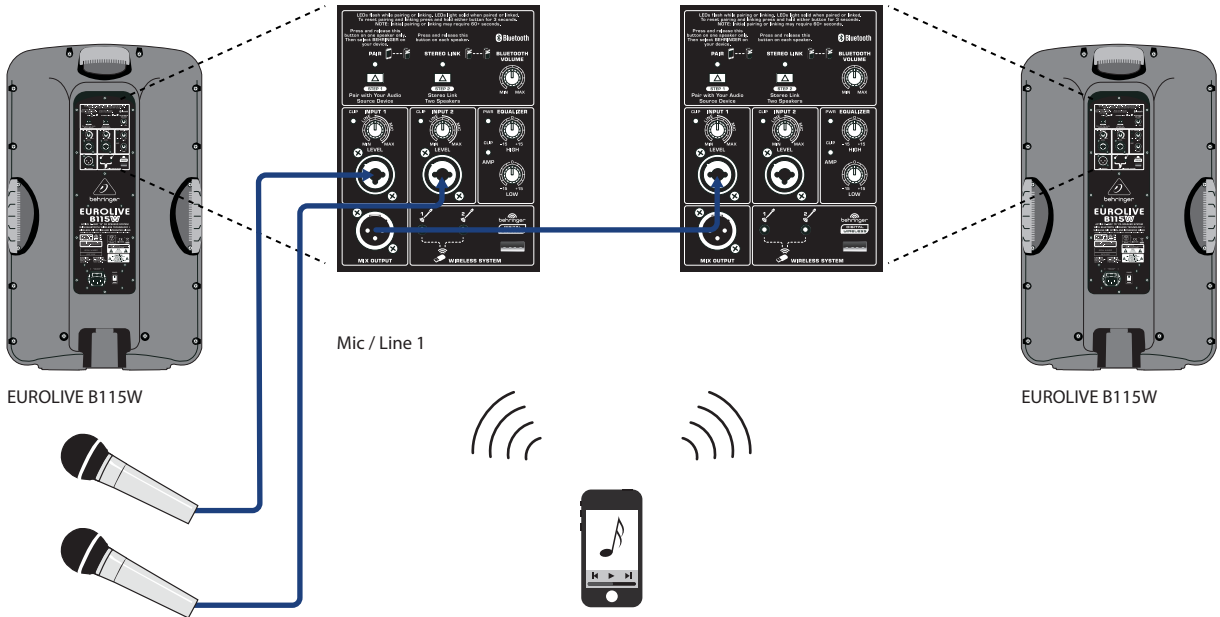


Stereo Operation with External Mixer



EUROLIVE B115W/B112W

Dual Mic Setup with Bluetooth Streaming



EUROLIVE B115W/B112W

Specifications

B115W/B112W

Amplifiers

Low-frequency range

max output power 700 W*

High-frequency range

Max output power 300 W*

Audio Inputs

XLR (Servo-Balanced)

Sensitivity -36 dBu to 0 dBu

Input impedance 14 kΩ

¼" TRS Jack (Servo-Balanced)

Sensitivity -36 dBu to 0 dBu

Input impedance 14 kΩ

Wireless System

Connector USB 3.0

Frequency band 2.4 GHz

Frequency response (wireless link) 20 Hz - 20 kHz (+0/-2.5 dB)

Range Max. 80 m (line of sight)

Audio Outputs

Mix

Connector XLR, balanced

Level Control

Input trim -∞ to +36 dB

Max. input level 18 dBu

B115W

Loudspeaker System Data

Frequency response 45 Hz to 20 kHz

Crossover frequency 2.2 kHz

Limiter Optical

Dynamic equalizer Processor-controlled

B112W

Loudspeaker System Data

Frequency response 50 Hz to 20 kHz

Crossover frequency 2.8 kHz

Limiter Optical

Dynamic equalizer Processor-controlled

B115W/B112W

Equalizer

High +/-15 dB @ 12 kHz

Low +/-15 dB @ 80 Hz

Power Supply

Voltage (Fuses)

USA / Canada 120 V, 60 Hz (T 6.3 A H 250 V)

UK / Australia 240 V~, 50 Hz (T 3.15 A H 250 V)

Europe 230 V~, 50 Hz (T 3.15 A H 250 V)

Japan 100 V~, 50-60 Hz (T 6.3 A H 250 V)

Power consumption max. 110 W

Mains connection Standard IEC receptacle

B115W

Dimensions/Weight

Dimensions (H x W x D) 28.1 x 16.8 x 12.3"
713 x 427 x 313 mm

Weight 38.9 lbs / 17.7 kg

B112W

Dimensions/Weight

Dimensions (H x W x D) 22.4 x 13.4 x 10.6"
568 x 342 x 270 mm

Weight 27.1 lbs / 12.3 kg

*Independent of limiters and driver protection circuits

Please note these specifications are preliminary and conceptual in nature, and as such are subject to change as product development progresses. This information is supplied for market research purposes only and is not to be made public in any manner. This document is solely the property of The MUSIC Group, or one of its subsidiaries, and must be surrendered upon request of the owner.

For service, support or more information contact the BEHRINGER location nearest you:

Europe
MUSIC Group Services UK
Tel: +44 156 273 2290
Email: CARE@music-group.com

USA/Canada
MUSIC Group Services NV Inc.
Tel: +1 702 800 8290
Email: CARE@music-group.com

Japan
MUSIC Group Services JP K.K.
Tel: +81 3 6231 0454
Email: CARE@music-group.com

This device has not been authorized by the rules of the Federal Communications Commission. This device is not, and may not be, offered for sale or lease, or sold or leased in the 50 U.S. states, the District of Columbia and U.S. possessions, until authorization is obtained. Technical specifications and appearances are subject to change without notice and accuracy is not guaranteed. BEHRINGER, RLARK, TEKNIK, MIDAS, BUGERA, and TURBOSOUND are part of the MUSIC Group (music-group.com). All trademarks are the property of their respective owners. The Bluetooth® word mark and logos are owned by the Bluetooth SIG, Inc., and any use of such marks by MUSIC Group is under license. iPod touch, iPhone, and iPad are trademarks of Apple Inc., registered in the U.S. and other countries. IOS is a registered trademark or trademark of Cisco Systems, Inc. and/or its affiliates in the United States and certain other countries. MUSIC Group accepts no liability for any loss which may be suffered by any person who relies either wholly or in part upon any description, photograph or statement contained herein. Colors and specifications may vary from actual product. MUSIC Group products are sold through authorized fulfillers and resellers only. Fulfillers and resellers are not agents of MUSIC Group and have absolutely no authority to bind MUSIC Group by any express or implied undertaking or representation. This manual is copyrighted. No part of this manual may be reproduced or transmitted in any form or by any means, electronic or mechanical, including photocopying and recording of any kind, for any purpose, without the express written permission of MUSIC Group IP Ltd. ALL RIGHTS RESERVED © 2013 MUSIC Group IP Ltd, Trident Chambers, Wickhams Cay, P.O. Box 146, Road Town, Tortola, British Virgin Islands.