

# Quinta

---

CONFERENCE SOFTWARE

Operating Instructions

<b>1. Introduction</b>	Page	4
<b>2. System Requirements</b>	Page	4
<b>3. Installation</b>	Page	4
<b>4. Putting into Operation</b>	Page	5
<b>5. Conference Mode</b>	Page	7
5.1 “Conference Configuration” Tab	Page	7
5.1.1 How to Connect	Page	7
5.1.2 Status Bar	Page	8
5.1.3 System Settings	Page	8
5.1.3.1 How to Select the Operating Mode	Page	8
5.1.3.2 How to enter a PIN Code	Page	10
5.1.3.3 Room Combining	Page	11
5.1.3.4 RF Settings	Page	13
5.1.4 Audio DSP Settings	Page	14
5.1.4.1 Settings	Page	14
5.1.4.2 Zoning	Page	15
5.1.4.3 How to select the AVB Channel	Page	16
5.1.4.4 Equalizer	Page	17
5.1.5 How to Set the Duration of the Meeting	Page	18
5.1.6 Participants List	Page	18
5.1.6.1 Function Button of the Chairman Unit	Page	21
5.1.6.2 Next, Clear Mics and Clear List Functions	Page	22
5.2. “Conference Controller” Tab	Page	24
5.2.1 How to start the Controller	Page	24
5.2.2 How to Create the Participants List	Page	25
5.2.3 Room View	Page	25
5.2.4 Request-To-Speak List	Page	27
5.2.4.1 How to Process the Requests-To-Speak	Page	28
5.2.4.2 How to Delete Microphones from the Speaker List	Page	28
5.2.4.3 How to Clear Microphones	Page	28
5.2.5 How to Set the Speaking / Warning Time	Page	29
5.2.6 How to Set the Duration of the Meeting	Page	29
5.2.7 Log View	Page	30
5.3 More Functions	Page	31
5.3.1 How to Open a Configuration	Page	31
5.3.2 How to Save a Configuration	Page	32
5.3.3 Startup Settings	Page	32
5.3.4 Licensing	Page	33
5.3.5 System Info	Page	34
5.3.6 Network Settings	Page	35
5.3.7 Field Programmer	Page	35
5.3.8 Manual	Page	35
5.3.9 RF Analyzer	Page	36
5.3.10 Microphone Mode	Page	36
5.3.11 How to Close the Program	Page	36
<b>6. Voting Function</b>	Page	37
6.1 How to Prepare Votings	Page	37
6.1.1 How to Open the Participants List	Page	37
6.1.2 How to Enter the Party	Page	38
6.1.3 Open/Create the Room View	Page	38
6.1.4 How to Set the Voting Time	Page	39
6.1.5 Permit Changing the Vote	Page	39
6.1.6 Secret or Public Voting	Page	39
6.1.7 How to Set the Voting Mode	Page	39
6.1.8 How to Set the Majority	Page	40
6.1.9 How to Set the Display of the Screen Settings	Page	40
6.1.10 How to Set the Voting Option	Page	40
6.2 How to Perform Votings	Page	41
6.2.1 How to Perform an Ad Hoc Voting	Page	41
6.2.2 How to Perform an Agenda Voting	Page	43
6.3 Display/Export/Delete Voting Reports	Page	47

<b>7. Microphone Mode</b> . . . . .	<b>Page 49</b>
7.1 Settings for Control Unit . . . . .	<b>Page 50</b>
7.1.1 PIN Code . . . . .	<b>Page 50</b>
7.1.2 Room Combining . . . . .	<b>Page 50</b>
7.1.3 RF Settings . . . . .	<b>Page 51</b>
7.1.4 Audio Settings . . . . .	<b>Page 51</b>
7.1.4.1 The Function "Remember Mic Channel" . . . . .	<b>Page 53</b>
7.1.5 Equalizer . . . . .	<b>Page 54</b>
7.2 Mute Settings for Microphones . . . . .	<b>Page 55</b>
7.3 Participants List . . . . .	<b>Page 56</b>
7.4 More Functions . . . . .	<b>Page 57</b>
7.4.1 How to Open a Configuration . . . . .	<b>Page 57</b>
7.4.2 How to Save a Configuration . . . . .	<b>Page 58</b>
7.4.3 Startup Settings . . . . .	<b>Page 58</b>
7.4.4 System Info . . . . .	<b>Page 59</b>
7.4.5 Network Settings . . . . .	<b>Page 60</b>
7.4.6 Field Programmer . . . . .	<b>Page 60</b>
7.4.7 Manual . . . . .	<b>Page 60</b>
7.4.8 RF Analyzer . . . . .	<b>Page 61</b>
7.4.9 Conference Mode . . . . .	<b>Page 61</b>
7.4.10 How to Close the Program . . . . .	<b>Page 61</b>
7.5 Microphone Mode in Use with Several Control Units . . . . .	<b>Page 62</b>
7.5.1 Connection . . . . .	<b>Page 62</b>
7.5.2 How to Allocate IP Addresses to the Control Units without DHCP . . . . .	<b>Page 63</b>
7.5.3 Allocation of Dynamic IP Addresses via DHCP . . . . .	<b>Page 63</b>
7.5.4 Troubleshooting . . . . .	<b>Page 63</b>
7.5.5 Display of the Connected Control Units . . . . .	<b>Page 64</b>
7.5.6 Frequency Allocation . . . . .	<b>Page 64</b>
7.5.7 Enter a PIN Code / Room Combining . . . . .	<b>Page 64</b>
7.5.8 Audio . . . . .	<b>Page 65</b>
7.5.9 Equalizer . . . . .	<b>Page 65</b>
7.5.10 Mute . . . . .	<b>Page 65</b>
7.5.11 Participants . . . . .	<b>Page 66</b>

## Quinta Conference Software

### 1. Introduction

Using the Quinta Conference Software you can control and configure the numerous parameters for the Quinta MU microphone units and the Quinta CU/RS control unit. The configuration is completed for all microphone units.

**Important:**

This manual describes a standard configuration for the control unit and the microphone units. The Quinta CU/RS control unit and the microphone units must be active during the whole configuration process. Switch the microphone units on by briefly pressing the microphone button. The microphone button will be backlit in white to indicate the RF connection to the Quinta CU/RS control unit. When the microphone button flashes red, the microphone unit does not have an RF connection to the control unit. Make sure that the microphone units have an RF connection to the Quinta CU/RS control unit.

Please register at [www.beyerdynamic.com/quinta/register](http://www.beyerdynamic.com/quinta/register). We will inform you about software updates and new developments of our Quinta product range. When registering you will be eligible to receive the Conference software control module (Quinta Conference Controller) free of charge.

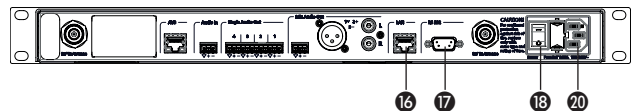
### 2. System Requirements

- Operating system: Windows® XP / Vista / 7 / 8 / 10
- Memory: min. 2 GB RAM
- HDD: > 20 MB
- Screen resolution: 1024 x 768 or higher
- Graphics card memory: 16 MB
- 1 free COM port (RS 232)  
or
- 1 free USB port  
or
- 1 free LAN port

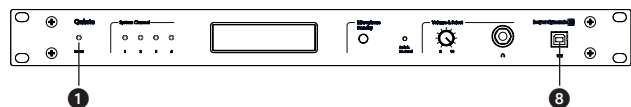
### 3. Installation

- Connect the Quinta CU/RS control unit 20 and the PC to the mains.
- Connect the RS 232 interface 17, the USB port 8 or the LAN port 16 of the Quinta CU/RS control unit to the appropriate port of your PC. When using the LAN connection to connect the control unit to a PC, you must use a crossover cable.
- Switch on the PC.
- Put the CD-ROM with the Quinta Conference Software into the CD-ROM drive and install the software into the desired directory on your hard disk.
- If you use the USB port 8, please install also the USB driver which is on the CD-ROM.

Quinta CU/RS – Rear



Quinta CU – Front



Quinta RS – Front



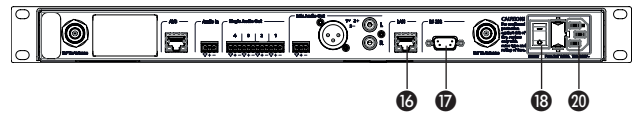


## 4. Putting into Operation

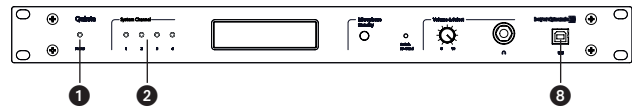
### Quinta CU

- Switch on the Quinta CU control unit with the power switch 18 at the rear.
- When the Quinta CU control unit is ready for use, the power LED 1 will illuminate.
- **Conference mode:** As soon as a microphone is activated, the channel LED 2 will illuminate red to indicate that the channel is occupied.
- **Microphone mode:** As soon as there is an active radio connection between the microphone and control unit (no matter if the microphone is open or muted) the appropriate channel display 2 will illuminate red to indicate that the channel is occupied. In the microphone mode a maximum of four microphones can be operated with one control unit. If all four radio channels are occupied and more microphones are activated, these microphones that are too many will automatically be deactivated right away.
- When putting the control unit into operation for the first time you must enter the settings for region, antennae and antenna cables. If required, you can reset the settings for region (except USA, Canada and Japan), antennae and antenna cable by selecting the "Reset Antenna Settings" button in the "System Info" sub-menu.
- Delivery state: Conference mode

Quinta CU/RS – Rear



Quinta CU – Front



Quinta RS – Front



### Quinta RS

- Switch on the Quinta RS control unit with the power switch 18 at the rear.
- When the Quinta RS control unit is ready for use, the power LED 1 will illuminate.
- **Conference mode:** As soon as a microphone is activated, the channel LED 2 will illuminate red to indicate that the channel is occupied.  
**Important:** In the conference mode you can operate a maximum of 20 microphone units with the Quinta RS. Furthermore, please note that the Quinta RS control unit does not provide any voting function. Therefore, the Quinta RS control unit **should not** be used with the **Quinta MU 23 V** and **21 V** microphone units if voting functions are required.
- **Microphone mode:** As soon as there is an active radio connection between the microphone and control unit (no matter if the microphone is open or muted) the appropriate channel display 2 will illuminate red to indicate that the channel is occupied. In the microphone mode a maximum of four microphones can be operated with one control unit. If all four radio channels are occupied and more microphones are activated, these microphones that are too many will automatically be deactivated right away.
- When the Quinta RS control unit is turned on for the first time, it is set to the RF band of 2.4 GHz\* which has been selected at the factory. Via the Quinta Software you can select the appropriate region where you use the control unit and select the antenna configuration so that the RF bands in the 5.2\* or 5.8 GHz\* range are available. The devices (Quinta MU, Quinta TB and Quinta TH) will automatically be adjusted and without any interruption to the frequency of the Quinta RS control unit.

**\*Note:**

The availability of the RF bands 2.4; 5.2 or 5.8 GHz depends on the selected region.

- Delivery state: Microphone mode
- Start the software.

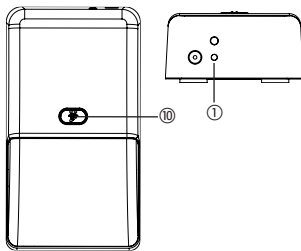
**Conference mode**

- As soon as a microphone is activated, the channel LED ② will illuminate red to indicate that the channel is occupied.
  - Switch on the microphone units by **briefly** pressing the microphone button ⑩ once. The microphone button ⑩ will be backlit in white to indicate the RF connection to the control unit. When the microphone button ⑩ flashes red, the microphone unit does not have an RF connection to the control unit.
- The green LED ① on the rear of the microphone units will illuminate.

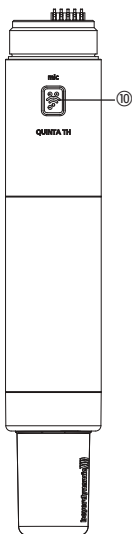
**Microphone mode**

- As soon as there is an active radio connection between the microphone and control unit (no matter if the microphone is open or muted) the appropriate channel display ② will illuminate red to indicate that the channel is occupied. In the microphone mode a maximum of four microphones can be operated with one control unit. If all four radio channels are occupied and more microphones are activated, these microphones that are too many will automatically be deactivated right away.
- The microphone is activated by pressing the microphone button ⑩. When turning it on in the microphone mode for the first time, the microphone is immediately activated and the microphone button ⑩ as well as the power on operating LED ① on the rear will illuminate green.

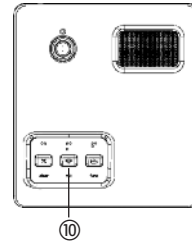
**Quinta TB – Top view and rear**



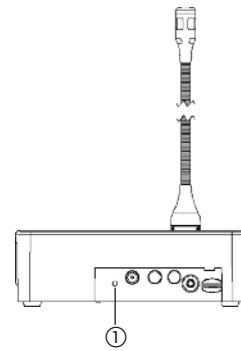
**Quinta TH**



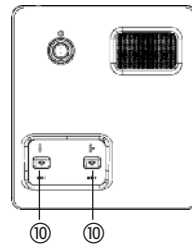
**Quinta MU 23**



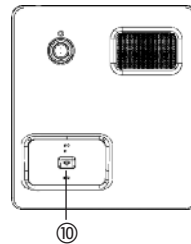
**Quinta MU 23/22/21 rear view**



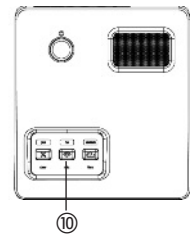
**Quinta MU 22**



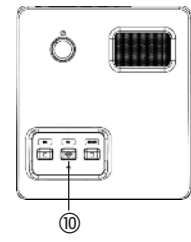
**Quinta MU 21**



**Quinta MU 23 V**



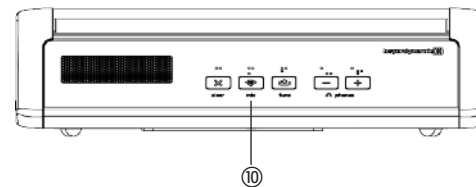
**Quinta MU 21 V**



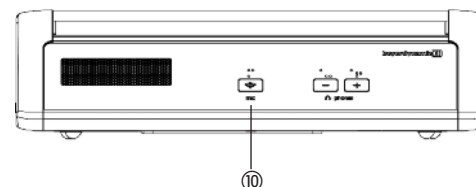
**Quinta MU 33/31 – rear view**



**Quinta MU 33 Chairman microphone unit**



**Quinta MU 31 Delegate microphone unit**



## 5. Conference Mode

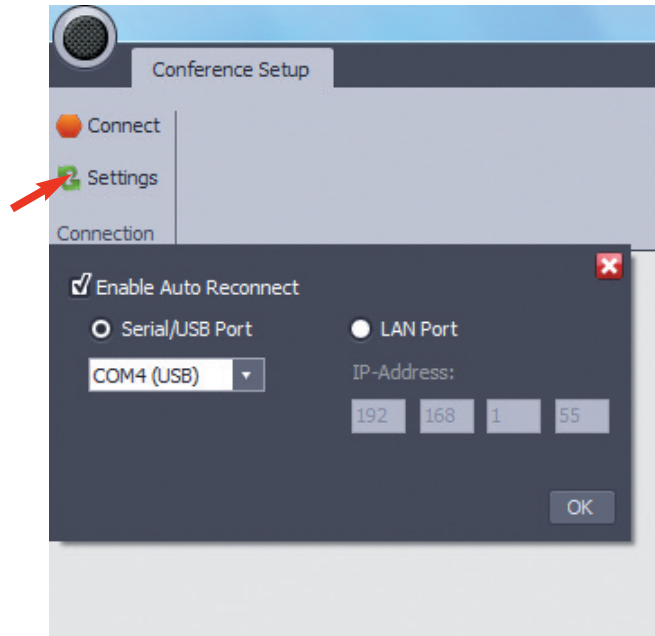
### Essential features:

- Many microphone units are connected with one control unit (Quinta CU: up to 150 / Quinta RS: up to 20).
- A maximum of four participants can speak simultaneously.
- In normal operation mode the microphone is still deactivated after turning the microphone unit on (not allocated). When pressing the microphone button, an inquiry is sent to the control unit, the channel is released by the control unit and the microphone will be activated (allocated).
- Furthermore, in the conference mode there are different options to allocate microphones / microphone units (e.g. FiFo, Request-to-Speak etc.).
- The conference mode can be used with the Quinta CU and Quinta RS control unit.

### 5.1 “Conference Configuration” Tab

#### 5.1.1 How to Connect

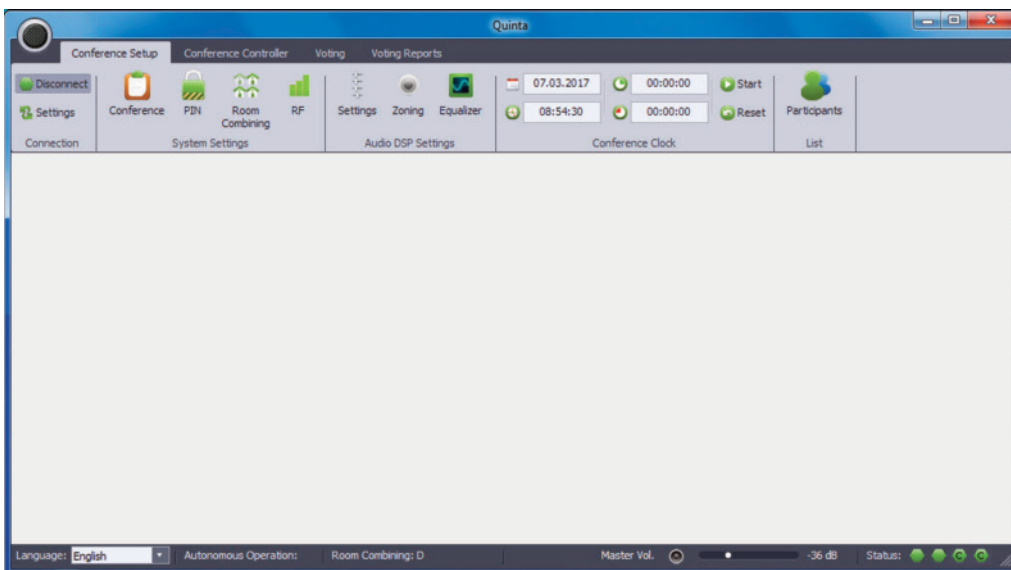
- Select “Settings” in the “Connection” area. A window will open, where you can set the port of your PC to which you connected the control unit CU Quinta
- Select “Serial Port”, if you have connected the Quinta CU/RS control unit to the RS 232 port or the USB port of your PC. Select the correct “COM Port”.
- Select “LAN Port”, if you have connected the Quinta CU/RS control unit to the network port of your PC. The default IP address 192.168.1.55 has been set in the Quinta CU/RS control unit.
- Select “OK” to close the window.
- Select “Connect” to establish the connection between the PC and control unit. The other controls and additional tabs will be displayed in the menu bar, the red light changes to green and from “Connect” to “Disconnect”.
- If you select the “Enable Auto Reconnect” check box, the connection is made automatically when you restart the software.



Establish the connection between the control unit and PC

**Note:**

When using the LAN interface, please make sure that the LAN connection of the PC has been configured to the same address range as the Quinta CU/RS control unit. If your PC uses an address range different from 192.168.1.xxx, just enter the IP address into the “Connecting to IP” field.



Quinta Conference Software display after establishing the connection

### 5.1.2 Status Bar

- The status bar is on the very bottom of the screen. Here you can select the required language, which is to be displayed in the software. You can see if the Controller is activated (“Controller”) or not (“Autonomous Operation” and the selected operating mode (“Conference” menu)). Furthermore, you can see the status of the connection between microphone unit and control



unit. For each registered chairman microphone unit there is an audio channel reserved, which is designated with a “C”. The “Master Vol.” slide control corresponds to the master control in the “Audio” menu and is used to control the overall volume of the system.

### 5.1.3 System Settings

#### 5.1.3.1 How to Select the Operating Mode

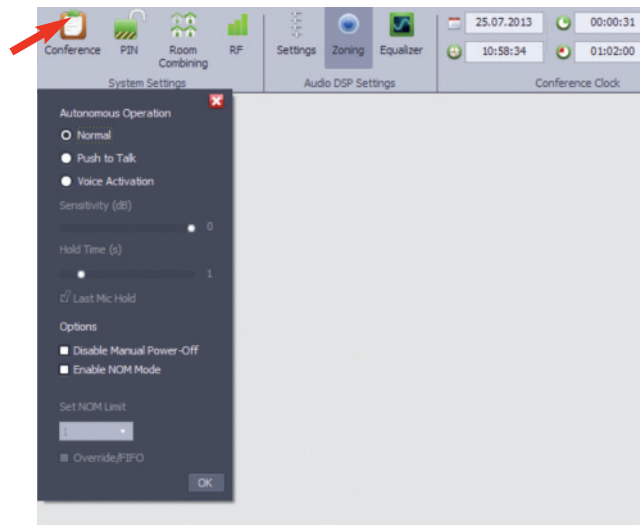
- Select “Conference” in the “System Settings” area. Here you can select the operating mode. In the autonomous mode the system will operate autonomously. The control unit will control all microphone units automatically according to the selected autonomous operating mode. You can select the operation mode “Normal”, “Push To Talk” or “Voice Activation”. The selected parameters will be stored immediately. The window can be closed with the “OK” button or “X”.

#### NORMAL

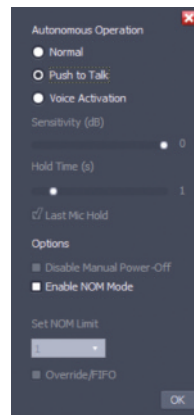
- With this operating mode the microphone button of the switched on microphone unit is **briefly** pressed to activate the microphone.
- The LED of the gooseneck microphone (Quinta MU 23/22/21) or the LED strips (Quinta MU 33/31) will illuminate red and the microphone button will illuminate green.
- If the microphone button is pressed **briefly** once again, the microphone is switched off while the microphone unit remains switched on.

#### PUSH TO TALK

- With this mode you must hold down the microphone button when you want to speak into the microphone.
- The LED of the gooseneck microphone (Quinta MU 23/22/21) or the LED strips (Quinta MU 33/31) will illuminate red and the microphone button will illuminate green as long as the microphone button is held down.
- In the Push To Talk mode the microphone unit cannot be switched off by pressing the microphone button (> 3 secs).



Select “Normal” operating mode



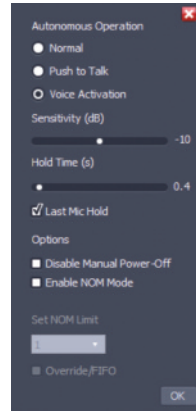
Select “Push to talk” operating mode

### VOICE ACTIVATION

- With this mode the microphone of the active microphone unit is activated as soon as you speak into it. The microphone button cannot be used to activate the microphone.
- The LED of the gooseneck microphone (Quinta MU 23/22/21) or the LED strips (Quinta MU 33/31) will illuminate red and the microphone button will illuminate green.
- In the Voice Activation mode the microphone button can be operated to turn off the microphone before the hold time has elapsed.

#### Important:

- The threshold (sensitivity) and the hold time have to be adjusted as well. The threshold defines which volume is needed to activate the microphone. The hold time defines the time how long a microphone remains activated when no-one speaks into it anymore.
- If you work with echo cancellers tick the “Last Mic Hold” check box, as for a proper function one microphone must be kept open.
- We recommend a sensitivity of -10 dB and a hold time of 2 - 3 seconds.

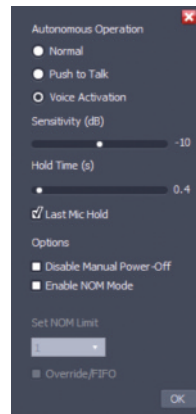


Select “Voice Activation” operating mode

### OPTIONS

With all operating modes there are the following options:

- “Disable Manual Power-Off”  
If you tick this check box, the microphone unit cannot be switched off by pressing the microphone button (> 3 secs).
- “Enable NOM Mode”  
If you tick this check box, you can select under “Set NOM Limit” how many microphones are to be opened simultaneously. The maximum number of open microphones depends on the number of available channels for the delegate microphone units. If you have e.g. three chairman microphone units in the system, there is only one channel available for the delegate microphone units, as for each registered chairman microphone unit an audio channel will be reserved automatically.
- Activate “Override / FiFo”. If you tick this check box in addition to the “Enable NOM Mode” check box, the microphone that has been activated first, will be switched off when the number of open microphone (NOM) is exceeded.



Select “Options”

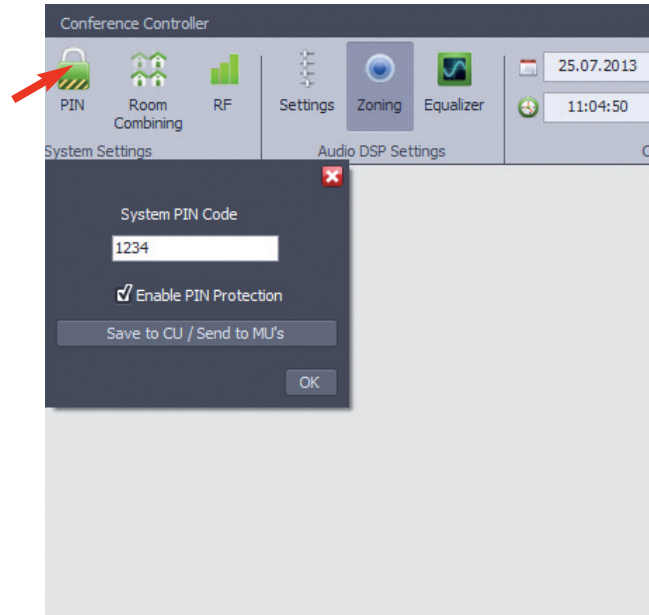
### 5.1.3.2 How to Enter a PIN Code

- To avoid unauthorised listening of the discussion, a PIN code can be entered for all microphone units of one system. This PIN code is stored within the microphone unit. Within the control unit it is stored if the PIN code is active or not.
- Select “PIN” to open the appropriate window.
- Enter a 7-digit numerical PIN code (0 to 9) into the empty “System PIN Code” field.
- Then select the “Save to CU / Send to MUs” button to transmit this code to all active microphone units and tick the “Enable PIN Protection” check box.
- A pin code can also be used to differentiate several Quinta systems within the same range if the rooms are not combined by using the room combining function.

**Note:**

As soon as the PIN code is activated within the Quinta system, all microphone units without the right code will lose the radio link to the control unit and will turn off after a few minutes. A PIN protected system allows to operate only microphone units which have the same code as the Quinta CU/RS control unit. If you want to add microphone units to the system, please proceed as described below:

1. Deactivate the “Enable PIN Protection)” check box.
2. Activate the microphone units to be operated within the system. Make sure that there is a radio communication between these microphone units and switch off all other microphone units.
3. Change the password in the “System PIN Code“ field.
4. Select the “Save to CU / Send to MUs“ button to transmit this code to all microphone units.
5. In order to activate the PIN code tick the “Enable PIN Protection“ check box.



Open “PIN Code” window and enter PIN Code

### 5.1.3.3 Room Combining

The “Room Combining” function is used when you want to operate or combine several Quinta systems in different rooms (A, B, C, D).

All microphone units and control units have been set to “A” at the factory. Refer to picture “Factory setting of control units and microphone units”. When you want to operate several systems in different rooms at the same time, you have to re-configure the systems; otherwise interference will occur. You can configure the systems for a maximum of four rooms.

If you want to operate several Quinta systems within the same range you can also use the PIN code in addition to the “Room Combining” function to differentiate the systems.

The “Room Combining” function, however, is more handy when rooms are combined or separated. Furthermore, you can directly configure the “Room Combining” function via the display and menu of the Quinta CU control unit (refer to separate manual “Quinta - Digital wireless conference system”). The PIN code can be used as an additional safety feature when using the “Room Combining” function. Please note that in this case all microphone unit in the different rooms must have the same PIN code.

When using the “Room Combining” function for the **first** time, please proceed as described in the following:

- Place the Quinta CU control units and the Quinta MU microphone units in the rooms A, B, C, D.

#### Room A

- As the control unit and the microphone units are configured to “A” there are no changes necessary for the control unit and microphone units in room A.

#### Room B

- Select the “Room Combining” icon to open the appropriate window.
- Switch on the microphone units in room B only.
- Configure the microphone units in room B. Under “MU Configuration” select “B” and “Send to MU”.
- As the control unit is still set to “A” (factory setting), the microphone units will lose the radio link to the control unit. The microphone button of the microphone units will flash red.
- In order to configure the control unit to “B”, deactivate “A” and activate “B” by ticking the appropriate check box under “Room Combining”.
- The microphone units will link to the control unit again. The microphone button will illuminate white.
- Switch off the microphone units and control unit in room B and continue with the configuration in room C and D.

#### Room C

- Configuration for room C as described for room B.

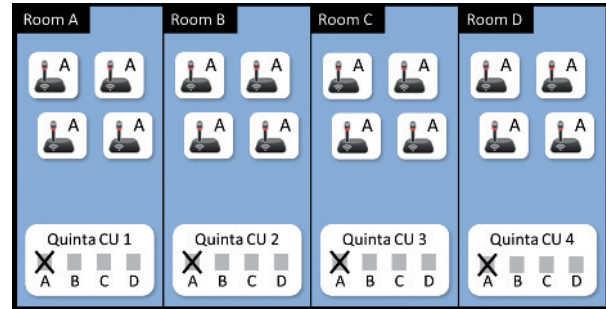
#### Room D

- Configuration for room D as described for room B.

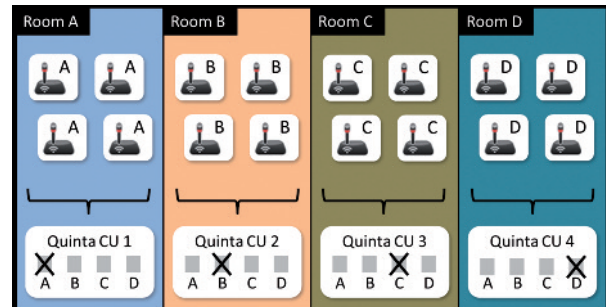
- Should you use the “Room Combining” function again, you do not need to set anything under the “MU Configuration” section, but only under the “Room Combining” section. Here you select the rooms you want to combine. The microphone units with the selected room designation will link to the control unit.

#### Important:

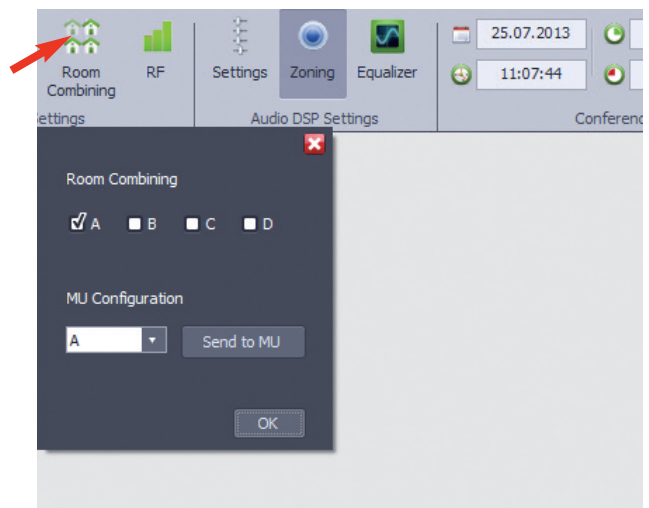
- The microphone units in the respective rooms must have a radio link to the control unit.
- The configuration for room A, B, C or D is stored in the appropriate microphone units.
- When you have only one Quinta system which you want to use in one room only, you can keep the factory setting of “A”.



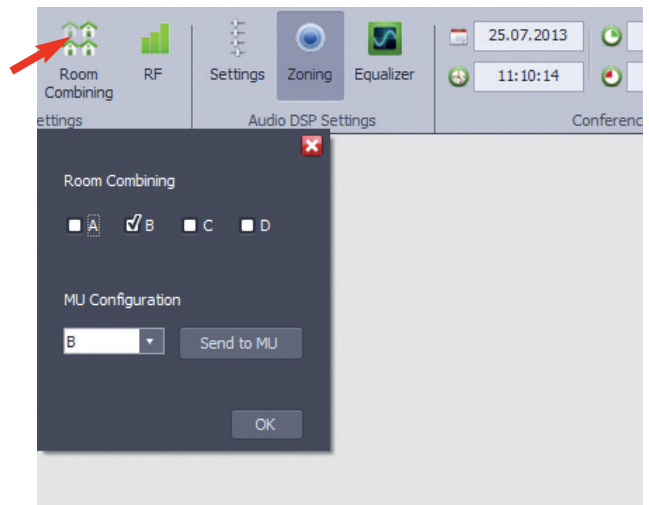
Factory setting of control units and microphone units



Configuration of control units and microphone units in four different rooms



Room combining “A” (factory setting)

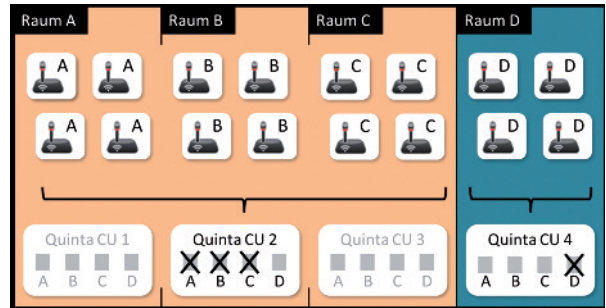


Select room “B”

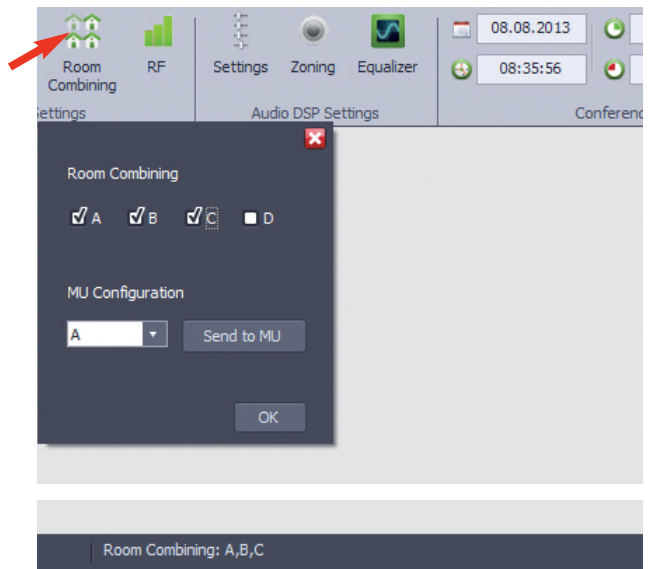


**How to combine different rooms – example**

- In our example the rooms A, B, C are combined.  
In room D a separate system with control unit and microphone units will be operated.
- In order to avoid interference between the system, you must turn off the control units in room A and C or deactivate them with the Quinta Conference Software via PC by removing all ticks under the “Room Combining” menu item. Select the “Room Combining” icon to open the appropriate window. In this window deactivate the rooms A, B, C, D by removing the ticks from the A, B, C, D check boxes.
- Now activate in room B the rooms A, B, C via the Quinta Conference Software by ticking the A, B, C check boxes. Do not activate room D, as this is a separate system in a separate room.
- The microphone units which are configured for room A, B, C will now link to the control unit in room B.
- The status bar displays: “Room combining: A, B, C”.



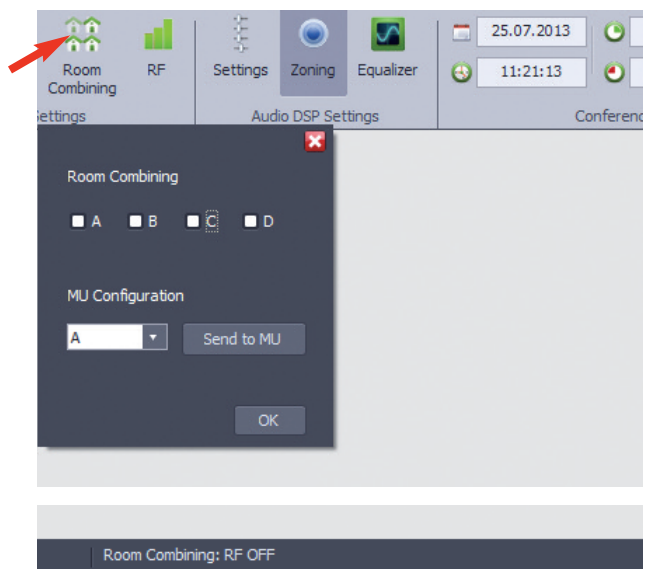
Configuration of control units and microphone units in the combined rooms A, B, C and in room D



Combine room A, B, C

**How to deactivate the radio module of the control unit**

- If the radio module of the control unit is to be deactivated so that there is no radio link between microphone units and control unit, remove all ticks from the A, B, C and D check boxes under “Room Combining”.  
The status bar will display: “Room combining: RF off”.



Deactivate the radio module of the control unit



### 5.1.3.4 RF Settings

- Under “RF” you can select the requested frequency band.
- Select “RF” to open the appropriate window.
- The settings of the initial operation of the control unit such as region, antenna and antenna cable will be displayed.
- Under “Frequency Selection” you can select if the requested frequency is to be transmitted automatically or manually.

**Auto:** If required, the system automatically selects various frequency bands to avoid interferences.

**Manual:** Exactly one frequency can be selected.

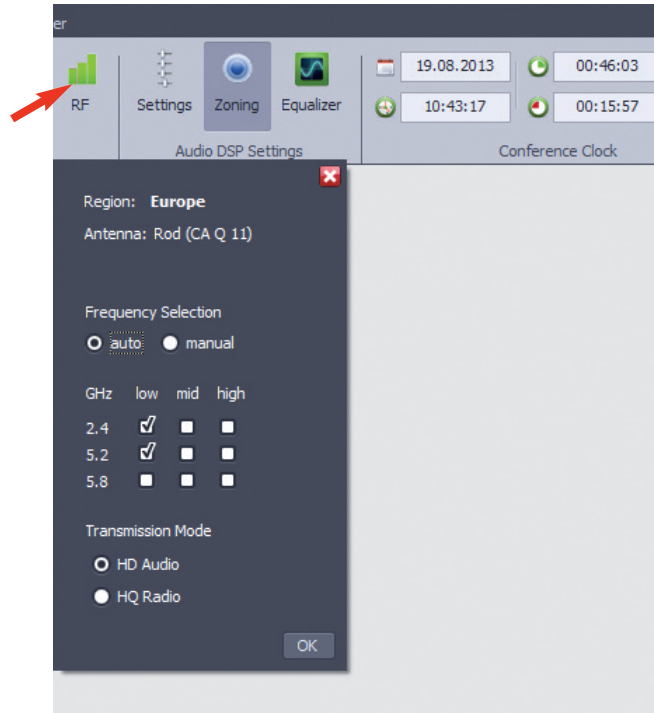
- Each frequency band can be divided into three bands: low, mid and high.
- To select the requested frequency band tick the appropriate check box. Depending on the region, it could be possible that not all frequency bands are available.
- Under “Transmission Mode” you can select the type of transmission:

**HD Audio (High Definition Audio Modus):**

In this mode Quinta operates with a sampling rate of 48 ksp/s and an audio bandwidth of 24 kHz, i.e. with a high-resolution audio transmission in studio quality.

**HQ Radio (High Quality of Service Modus):**

Modern architecture of some conference rooms use large glass or metal surfaces which can cause reflections and therefore interferences of the radio transmission. In this case Quinta offers the “HQ Radio” mode to improve the radio stability. When activating this mode, the sampling rate will be reduced to 24 ksp/s and the audio bandwidth to 12 kHz. By the way these values correspond to the audio quality of the reliable beyerdynamic MCW-D 50 system.

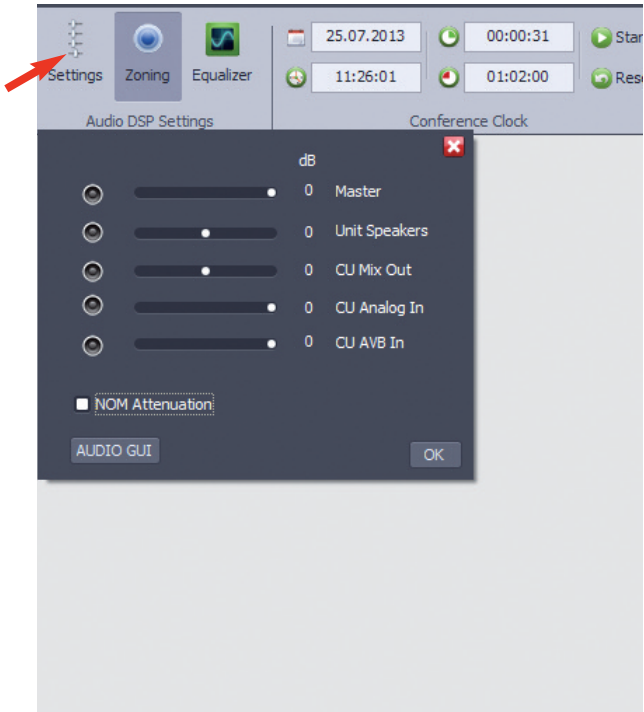


Select frequency and transmission mode

### 5.1.4 Audio DSP Settings

#### 5.1.4.1 Settings

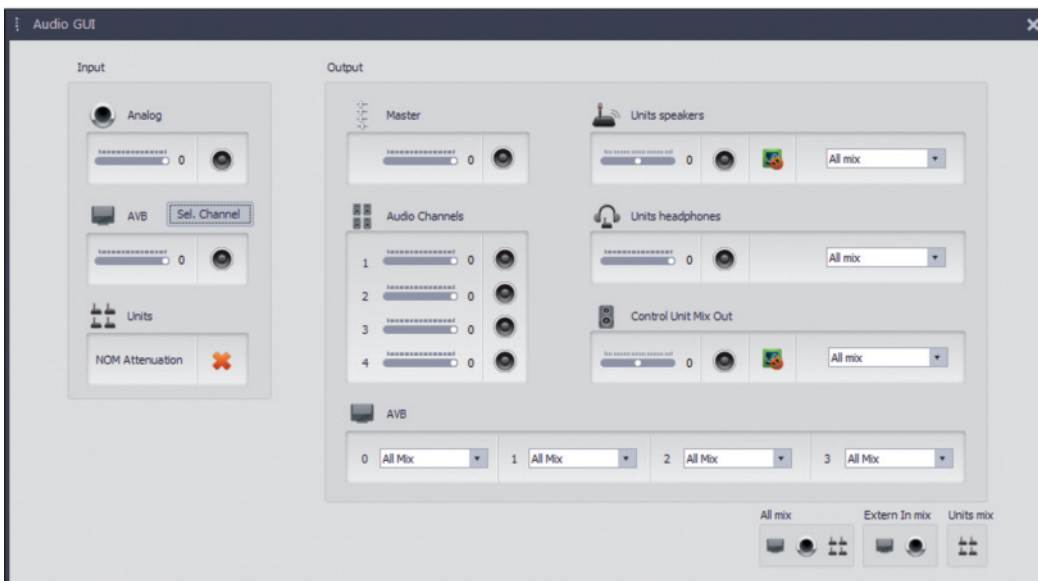
- Select “Settings”.
- In the opened window you can set the volume:
  - Master: controls the overall volume of the system.
  - Unit Speakers: controls the volume of the integrated loudspeakers of the microphone units.
  - CU Main Out: controls the volume of the MIX outputs of the control unit.
  - Analog In: controls the volume of the analogue input of the control unit.
  - AVB In: controls the volume of the AVB input of the control unit.
- You can mute each volume control by selecting the appropriate loudspeaker icon.
- By selecting the “AUDIO GUI” button a detailed graphical picture will be displayed.
- In the “AUDIO GUI” window you can select different mix settings for the loudspeakers of the microphone units, headphones connected to the microphone units as well as the main output and the AVB connection of the control unit.



Set volume

You can select which signal is to be routed to the respective output.

- If you select “All Mix”, the mix of all signals from the analogue input, AVB input and the microphone units is imported.
- If you select “Ext. Mix”, the signals from the analogue input and AVB input are imported.
- If you select “Units Mix”, the microphone signals of the microphone units are imported.
- If the “Zoning” function is **not** activated, there are 4 audio outputs available. Each RF channel is allocated to one output. RF channel 1 = output 1, RF channel 2 = output 2 etc. Each RF channel represents one microphone. There is no fixed allocation for microphones to a defined channel.
- If the “Zoning” function is activated, each output is allocated to a defined zone. In each zone several microphones are mixed depending on the setting. E.g. it is possible to put a zone to the headphone output of the microphone units.

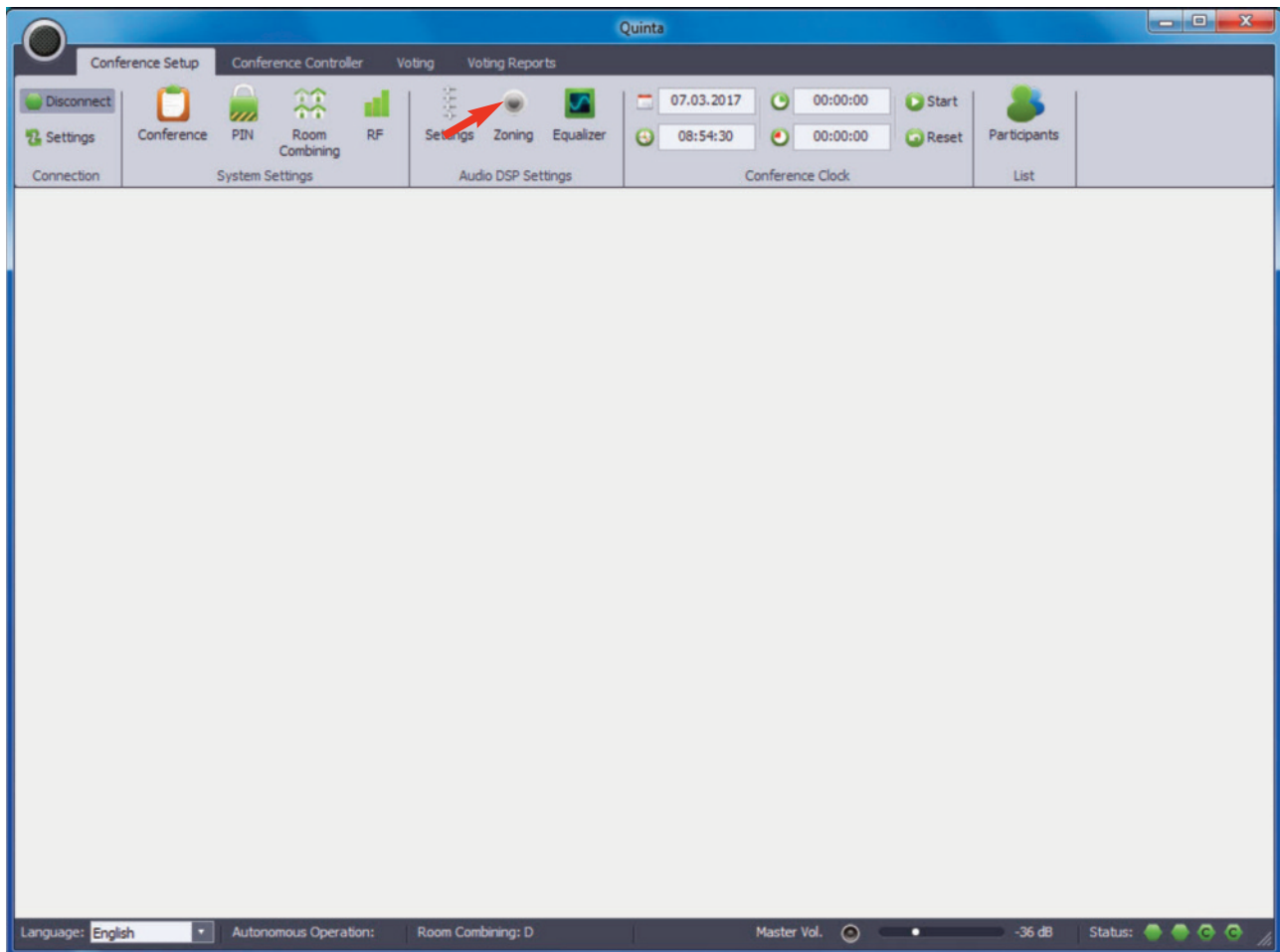


“Audio GUI” window

### 5.1.4.2 Zoning

- For a separate sound reinforcement of the room or podium you can activate the “Zoning” function.
- When the icon is blue, the “Zoning” function is activated.
- When the icon is grey, the “Zoning” function is deactivated.
- With the “Zoning” function selected microphone unit make one or up to four groups.
- You can select the zone in the “Participants” window. Select the “List” icon to open the window “Participants”. Select a

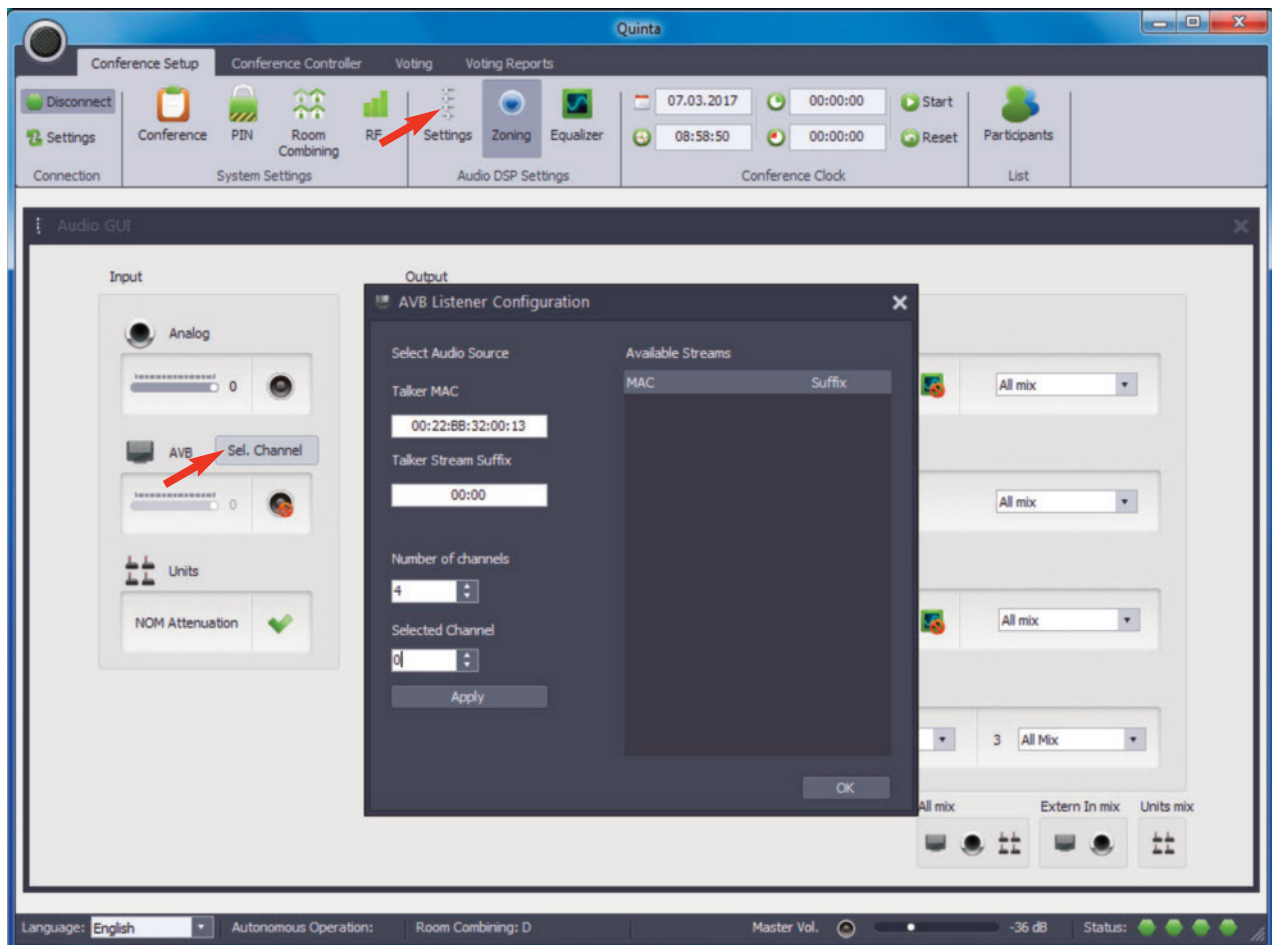
- microphone unit and click on the “Edit” button. Now you can click in the area of the “Zone” column and select the requested zone from the menu by clicking on the arrow.
- How to change the zone in the Controller: Select the participant with the right mouse button in the “Room View” and select the zone under “Change Zone”.
- To close the window select “X”.



Activate “Zoning” function

### 5.1.4.3 How to Select the AVB Channel

- If you connect an AVB capable device to the control unit, you can open with the “Sel. Channel” button the “AVB” window in the “Audio GUI” window .
- “Available Streams” displays which streams are present in the AVB network. In the “Talker MAC” field you can manually enter the MAC address of the AVB device connected to the control unit. In the “Talker Stream Suffix” field you can enter the stream you would like to select.
- On the left hand side under “Talker MAC” the MAC address and under “Talker Stream Suffix” the suffix will automatically be accepted and displayed when you click on an entry in the “Available Streams” list.
- Under “Number of Channels” you must select how many channels the stream contains.
- Under “Selected Channels” you can select which channel you would like to listen to. **Warning:** You cannot enter a higher number of channels as defined in “Number of Channels”.
- In order to test if you can connect with the stream, select the “Listen” button. In this case the output of the stream is not stored. If the output is to be stored, select the “OK” button.
- If you select “X” the original setting is reset.

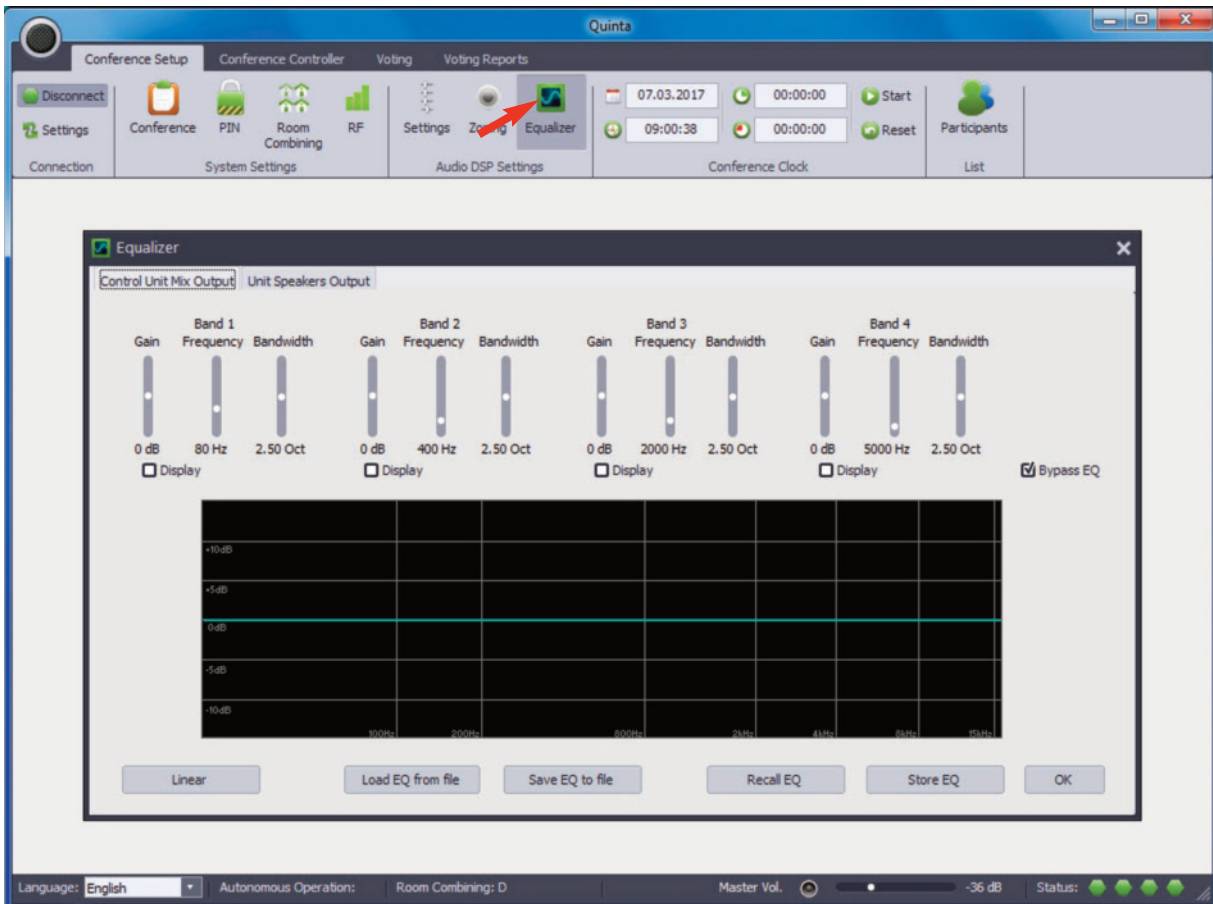


Configure AVB Listener

### 5.1.4.4 Equalizer

- Select “Equalizer” and open the appropriate window. Here you can enter settings for the master output of the control unit (“Control Unit Main Output” tab) and for the loudspeakers of the microphone units (“Unit Speakers Output” tab). You can

adjust the master gain and the centre frequency, gain and bandwidth for up to four frequency bands. The different settings are displayed in the window below.



Set the equalizer

- An equalizer is used for signal processing, i.e. the sound of the signal is adapted to the room.
- In this menu you have a fully parametric equalizer with 4 bands. In each band you can select the following sound settings for the **microphone unit’s loudspeakers** or **external loudspeakers**.

– **Frequency**

The frequency is measured in Hertz (Hz) and stands for the centre frequency of an equalizer. Not only the selected frequency itself is modified, but also the frequencies around it. It depends on the bandwidth/edge steepness how much this modification is influenced.

**Range:**

- Band 1 = 20 - 200 Hz
- Band 2 = 100 - 2,000 Hz
- Band 3 = 800 - 8,000 Hz
- Band 4 = 1,000 - 16,000 Hz

**Frequency spectrum**

- Bass:** from approx. 40 Hz to 200 Hz: full, massive
- Deep mids:** from approx. 200 Hz to 800 Hz: rich, warm
- Mids:** from approx. 800 Hz to 5,000 Hz: clear, present
- Highs:** from approx. 5,000 Hz to 8,000 Hz: bright, lively, brilliant
- Ultra highs:** from approx. 8,000 Hz: crisp, sparkling

– **Bandwidth**

With the bandwidth you can select how large the area around the selected centre frequency (frequency band) has to be processed by the equalizer.

**Range:** 0.1 to 5 octaves

– **Gain**

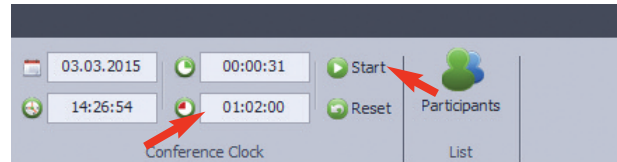
Gain is measured in decibels (dB) and describes the increase or decrease in volume (amplitude change) which results from processing the selected frequency with the equalizer.

**Range:** -15 dB to +15 dB

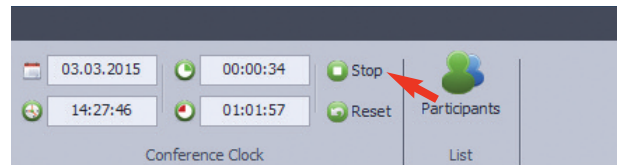
- If you tick the “Display” check box, the current setting of a band is displayed with the frequency response of all four bands. We recommend that you avoid settings that are too extreme.
- If the “Bypass EQ” check box is ticked, the equalizer is turned off.
- Select the “Save EQ to file” button to store the equalizer configuration in a file on the PC.
- Use the “Load EQ from file” button to load a stored equalizer configuration file.
- Use the “Linear” button to set the amplification (gain) of all 4 bands to 0 dB.
- Use the “Store EQ” button to store the equalizer settings temporarily on the PC.
- Use the “Recall EQ” button to recall temporarily stored settings of the equalizer.
- To close the window, select the “OK” button.

### 5.1.5 How to Set the Duration of the Meeting

- If you want to set the duration of the meeting in order to check how much time of the meeting has passed, you can enter the duration in the “Conference Clock”.
- In the field lower right you can enter the duration of the meeting in the format HH:MM:SS, e.g. 04:30:00 (i.e. the meeting will take 4 hours and 30 minutes). Press the Enter key of your keyboard to save the time.
- Once the meeting start, select “Start”. In the field upper right you can see how much time of the meeting has already passed.
- With “Reset” you can reset the time to the stored time value.
- When the meeting is interrupted, you can stop the time with “Stop”.



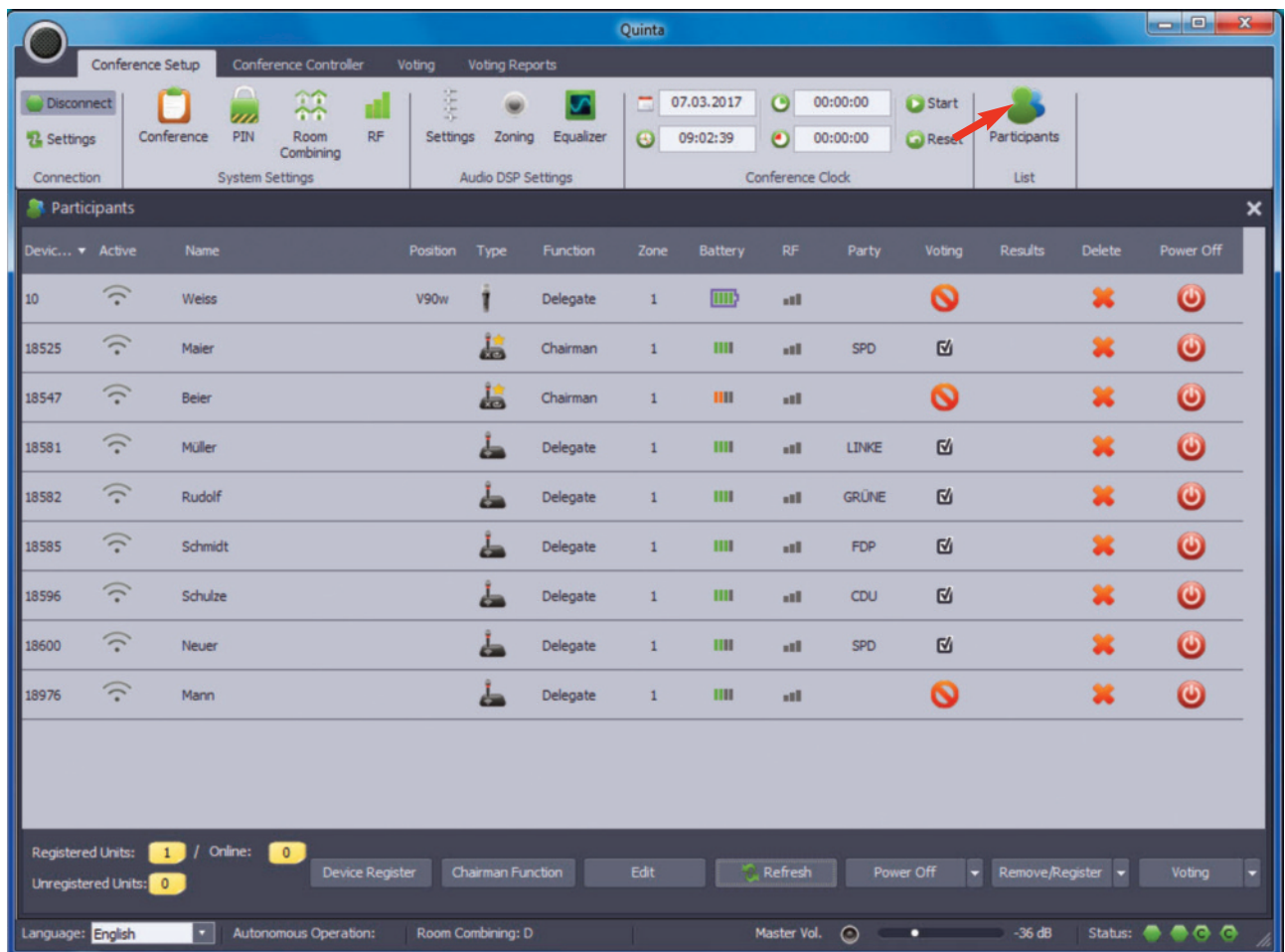
Set the duration of the meeting and start the conference clock



Stop the conference clock

### 5.1.6 Participants List

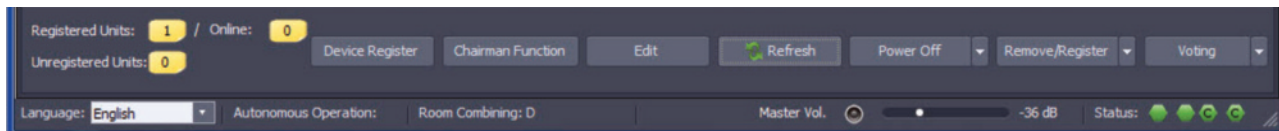
- In order to open the participant’s list, select “Participants” in the “List” area.



Open the participants list



The buttons below have the following meaning.



### Registered Units

Display of the units registered in the participants list.

### Online

Display of the number of the activated units.

### Unregistered Units

Display of the number of the units, which are not registered in the system.

### Device Register

Activate the "Device Register" button so that the microphone units will be displayed in the participant's list when the microphone is activated. When all microphone units are listed, you can deactivate the "Device Register" button.

### Chairman Function

When you select this button, a window will be opened where you can configure the function button of the chairman microphone unit.

### Edit

When you activate the "Edit" function, you can make various changes in the participant's list such as entering a name instead of the serial number, change the function of the microphone units (e.g. configure delegate microphone unit as additional chairman microphone unit), allocate the microphone units to determined zones.

**Important:** The Quinta MU 22 double delegate microphone unit cannot be configured as a chairman unit.

### Refresh

With the "Refresh" button you can perform a status update of the "Battery" and "RF" display.

### Power off

Drop-down menu with three options:

"Power Off All Units": You can turn off all units that have an RF connection to the control unit, even when they are not listed in the participants list.

"Power Off Only Registered": Only units that are registered are turned off.

"Power Off Only Unregistered": Only units that are not registered are turned off.

### Remove / Register

Drop-down menu with two options:

"Remove All Registered": With this option you remove all registered units from the list and also from the web server.

"Register All Unregistered": With this option you can register all unregistered units.

### Voting

Drop-down menu with two options:

"Enable All Voting": Activate the voting function for all voting microphone units (Quinta MU 23 V and Quinta MU 21 V).

"Disable All Voting": Deactivate the voting function for all voting microphone units (Quinta MU 23 V and Quinta MU 21 V).

- In a table you can read the various information about the individual microphone units.
  - DEVICE-ID: Device ID which is also on the type plate of the microphone unit.
  - ACTIVE: Displays the status of the microphone and the microphone unit.



Microphone unit is turned on; microphone is not activated



Microphone unit is turned on; microphone is activated



Microphone unit is turned off, has been removed or is out of the range

- NAME: Displays the name of the participant. You can enter or change the name by selecting the line and activating the “Edit” button. Select once again the name to modify and enter the desired name. The names are stored in the control unit and will also be displayed in the Web server.
- DEVICE: Displays whether it is a delegate, double delegate or chairman microphone unit.

Quinta MU 23/22/21



Chairman microphone unit



Chairman microphone unit configured as delegate microphone unit



Delegate microphone unit



Delegate microphone unit configured as chairman microphone unit



Double delegate microphone unit

Quinta MU 33/31



Chairman microphone unit



Chairman microphone unit configured as delegate microphone unit



Delegate microphone unit



Delegate microphone unit configured as chairman microphone unit



Handheld transmitter configured as chairman with display of the attached microphone capsule



Handheld transmitter configured as delegate with display of the attached microphone capsule



Quinta TB



Boundary microphone configured as chairman unit



Boundary microphone configured as delegate unit

- FUNCTION: Here you can set, if the microphone unit or handheld transmitter is to operate as a delegate or chairman microphone unit/handheld transmitter. Select the delegate or chairman with the left mouse button from the drop-down menu. **Important:** The “Edit” function must be active.
  - ZONE: You can assign microphone units to individual zones, e.g. with separate sound reinforcement of room and podium. Select the desired zone with the left mouse button from the drop-down menu. **Important:** The “Edit” function must be active.
  - BATTERY: Displays the battery status of each microphone unit. When using the Quinta TH handheld transmitter click on the battery symbol to select alkaline or NiMH batteries.
  - RF: Displays the RF reception quality.
  - PARTY: Displays the party membership. The parties must be entered in the “Voting” tab under “Party” so that the party membership of the participant can be selected.
  - VOTING: The check box must be ticked so that the voting function of the appropriate microphone unit is activated. If the microphone unit is not a voting microphone unit, a special symbol will be displayed.
-  Check box that can be activated for microphone unit with voting function
-  Symbol for microphone units without voting function (standard)
- RESULTS: In public votings it is displayed how the individual participant has voted.
  - DELETE: With this function you can delete microphone units from the participant list. Highlight the appropriate line and select the red “X”.
  - DEACTIVATE: To turn off the microphone unit.

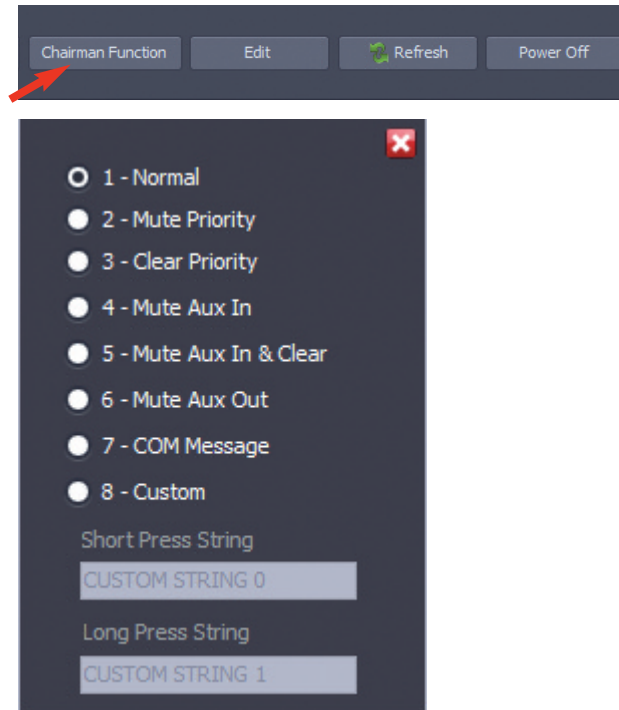
How to Find Microphone Units

- If you click on a symbol of the microphone status displayed in the participant’s list, the LED ring of the gooseneck microphone (Quinta MU23/22/21) or the LED strips (Quinta MU33/31) will flash rapidly several times. In this way you can find out where the microphone unit is in the conference room. This function is useful when you do not know where to find the microphone unit should a battery be empty and needs to be replaced so that a power adapter can be connected.



### 5.1.6.1 Function Button of the Chairman Unit

- When a microphone unit is determined as a chairman unit, the function button can be configured. Select the “Chairman” button and the window, where you can configure the function button of the chairman microphone unit, will be opened. Please make sure that the selected microphone unit is a real **chairman microphone unit** (Quinta MU 23/33).
- Depending on the configuration the function button of the chairman unit has one of the following functions.
- The functions “Normal”, “Mute Priority”, “Mute Aux In”, “Mute Aux In & Clear” and “Mute Aux Out” will have a “on-off feature”, i.e. all chairman microphone units will display if the priority is turned on or not. When the priority is turned on, the function button of all chairman microphone units will illuminate red until the priority is turned off. The priority can be turned off by any chairman even when another chairman has activated the priority.



Configuration of the function button of the chairman microphone unit

1. **Normal**  
All activated delegate units are cleared when the microphone of the chairman unit is switched on. The function button illuminates red. The delegates can switch on their microphone again when the priority mode is deactivated.
2. **Mute Priority**  
All active delegate units are muted temporarily when the chairman is speaking. The function button illuminates red. When the chairman has finished the priority mode, the previously active delegate microphone units will be activated again.
3. **Clear Priority**  
All active delegate microphone units are cleared. The delegates can activate the microphone again.
4. **Mute Aux In**  
By pressing the function button the Aux In port will be muted, pressing the function button again the Aux In port will be reopened.  
If the chairman presses the function button of the microphone unit, the audio input of the Quinta CU/RS control unit will be muted.  
The function button illuminates red.
5. **Mute Aux In & Clear** all active delegate microphone units. When the function button is pressed a second time, mute is deactivated, when the function button is pressed a third time, mute

- is activated again and all active delegate microphone units are cleared etc.
- The function button illuminates red.
6. **Mute Aux Out**  
When the function button is pressed the first time, the output will be muted, when the function button is pressed the second time, mute will be deactivated, when the function button is pressed a third time, the output is muted again etc.  
When the chairman presses the function button of the microphone unit, the audio output of the Quinta CU/RS control unit will be muted.  
The function button illuminates red.
  7. **Com Message**  
A command is sent via the RS 232 serial interface of the Quinta CU/RS control unit and a programmed function is carried out via a media control system (e.g. light on/off).
  8. **Custom**  
The Custom mode will allow different commands depending on how long the function button is pressed  
< 1 second = “Short press string” is transmitted  
> 1 second = “Long press string” is transmitted  
These commands can be set with the Quinta Conference Software according to customer’s requests.

### 5.1.6.2 Next, Clear Mics and Clear List Functions

In the “Conference Controller” tab of the Quinta Software you will find the buttons for the functions “Next”, “Clear Mics” and “Clear List”. Due to three new commands these functions can remotely be controlled by the chairman microphone unit with the function button. The operation via the Quinta Conference Software is also still possible.

**Next**

The “Next” function allows the manual processing of the requests to speak of the delegates in the speaker list and turns on the next microphone of the speaker list.

**Clear Mics**

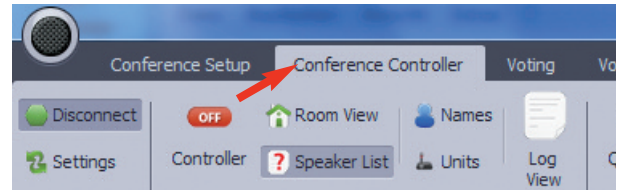
The “Clear Mics” function deactivates all active microphones.

**Clear List**

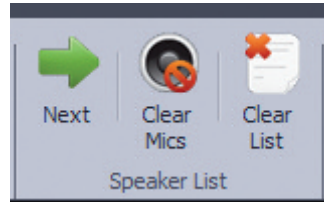
The “Clear List” function clears all requests to speak from the speaker list

**In order to make use of the remote control of the “Next”, “Clear Mics” and “Clear List” functions with your Quinta system, please proceed as described below:**

- Select the “Participants List” icon in the “Conference settings” tab to open the device list.



Select “Conference Controller” tab



“Next”, “Clear Mics”, “Clear List” functions

- When the window of the device list is opened, select the “Chairman function” button at the bottom of the window. The configuration menu for the function button of the chairman microphone unit will be opened.

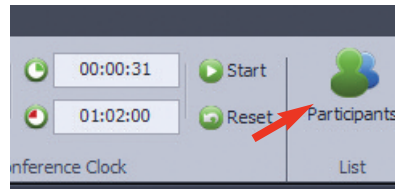
In addition to the given standard functions you can allocate two different command sets to a short or long press of the function button.

- When entering the

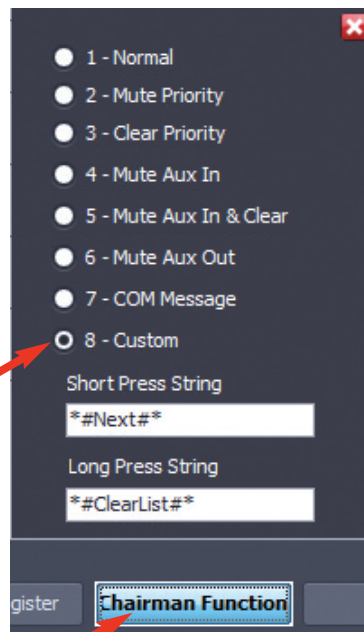
**\*#Next#\***  
**\*#ClearMics#\***  
**\*#ClearList#\***

command sets, please note to maintain the upper case and lower case exactly. \*#Next#\* corresponds to the “Next” command, \*#ClearMics#\* corresponds to the “Clear Mics” command and \*#ClearList#\* to the “Clear List” command.

- After entering the command sets into the appropriate fields you can close the menu by selecting the “X” symbol in the upper right corner or with another click on the “Chairman Function” button.



Open the participants list



Configure the function button of the chairman microphone unit

**In order to make use of these functions, please note the following issues:**

- The Quinta Software must be installed and running on a computer connected to the Quinta CU/RS control unit (RS-232, USB or via IP).
- The Controller of the Quinta Software must be activated (Controller display "ON"). The microphone units are in the request to speak mode, i.e. when a delegate enters his/her request to speak the microphone is not immediately turned on, but the request to speak of the delegate is entered in the request to speak list and the chairman or the operator at a PC releases the request to speak.
- The programmable function button of the chairman microphone unit has a double assignment, which you can use if needed. Via a short or long pressing on the button you can release two different command sets.

**For more information, please refer to the "Quinta Conference Software" manual:**

- Chapter 6.5.1: Function button
- Chapter 7 et seq.: Conference Controller (how to release and, start the Controller, how to create a participant's list, view of the conference room, request to speak list, how to process the requests to speak etc.)

## 5.2 “Conference Controller” Tab

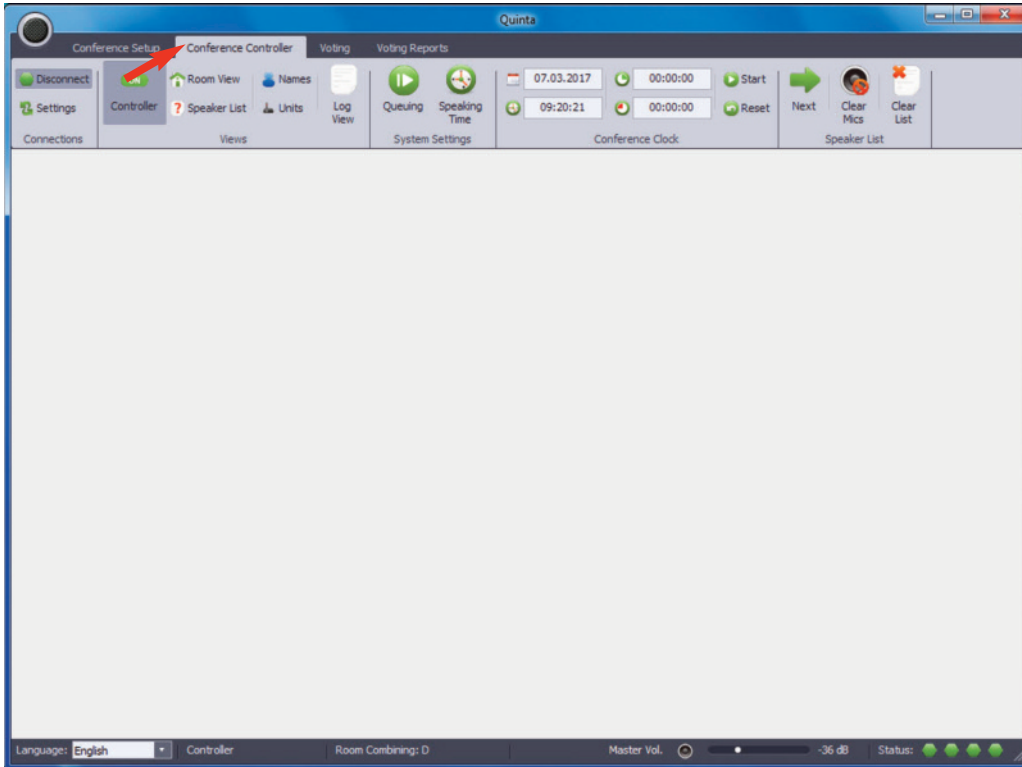
With the Controller function you can operate the Quinta CU/RS control unit and the appropriate microphone units.

The Controller provides a number of functions, such as:

- Control of the microphone units
- Creating a seating order in the conference room
- Recording and printing a Log file of conference events

**Important:**

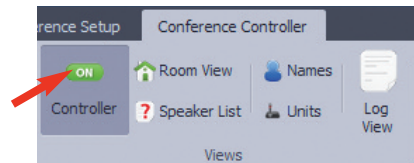
In order to use all functions of the Controller, you must release it in the menu “System Info” (refer to chapter 8.5 “System Info”). After an online registration you will receive an license number from beyerdynamic, which you can enter in the appropriate field at “System Info”.



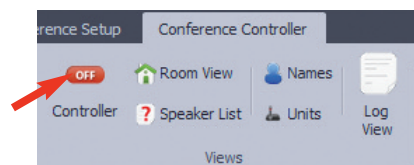
Select “Conference Controller” tab

### 5.2.1 How to Start the Controller

- When you start the Controller, the Quinta system will operate in the PC-controlled mode. In this mode a PC or media control system will manage the conference system.
- To start the Controller, select the red OFF icon, which will turn into a green ON icon.  
Display OFF = Controller turned off  
Display ON = Controller turned on
- When the Controller has been started, the display of the control unit shows the note “PC-Controlled”.



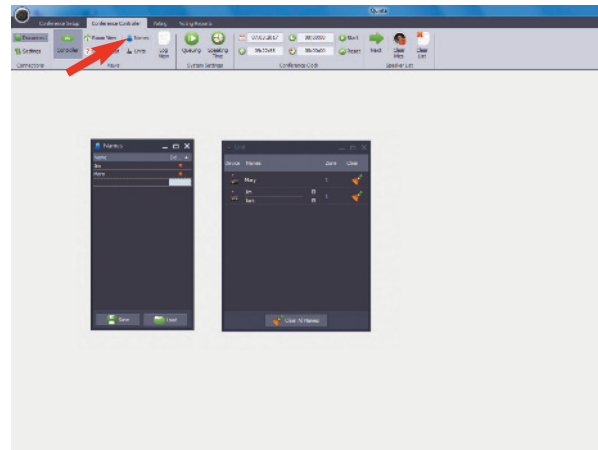
Controller “ON”



Controller “OFF”

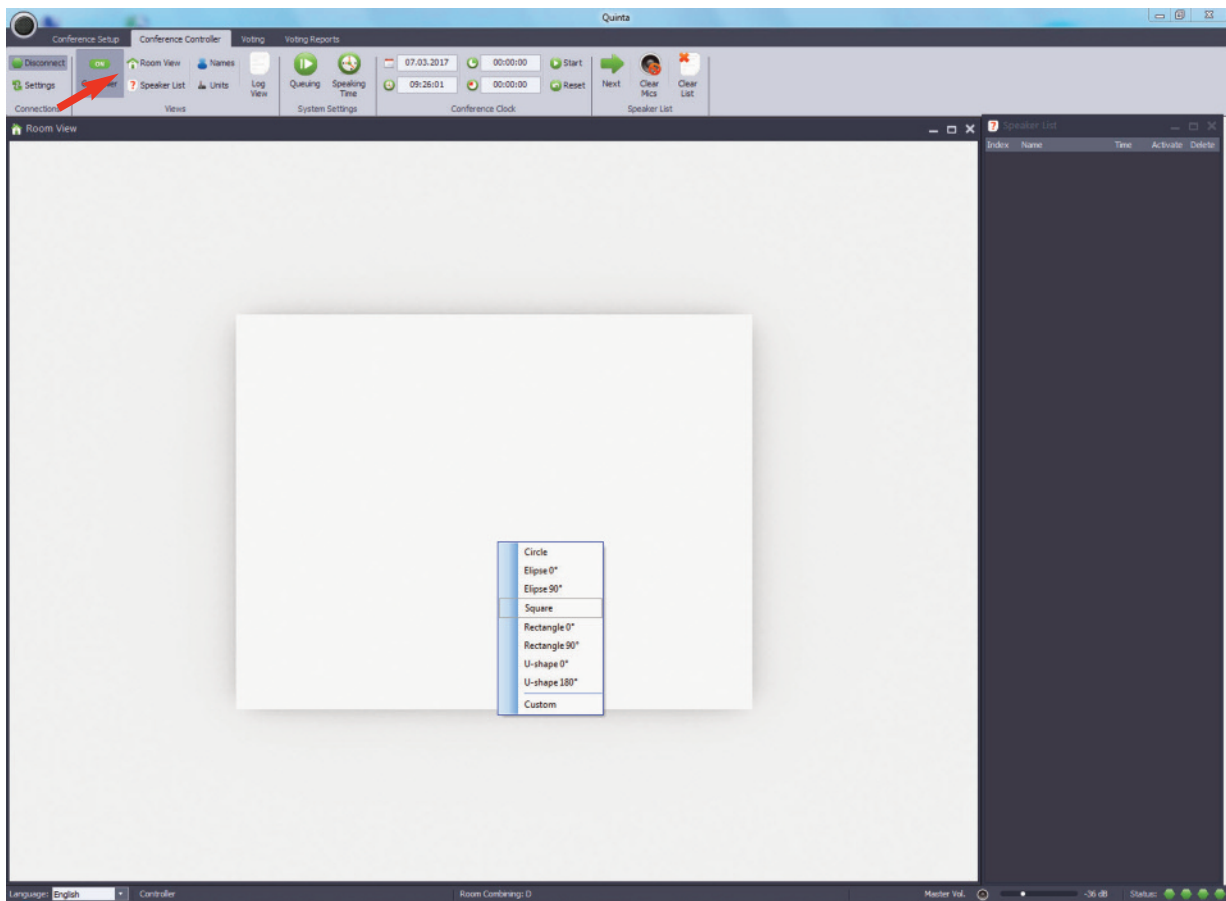
### 5.2.2 How to Create the Participant's List

- Select “Names” in the menu bar. A window will be opened where you can enter the names of the participants. A name can consist of a maximum of 50 characters. In total 300 names can be entered.
- If you want to save the list of names, select the “Save” button. You can select a file name for the list of names and the location where to save.
- If available, you can open and load a file with the “Load” button where the names of the participants have been entered beforehand. The required file format is a pure ASCII text file: \*.txt Each name is in a separate line. Microsoft Word (\*.doc/\*.docx) or similar are not supported.
- Select “Units” in the menu bar. The window “Units” will be opened where the microphone units are listed that are registered in the participant list. Refer also to chapter 6.5 “Participant's List”.
- To provide the microphone units with the names of the participants, you just need to drag and drop the name of the previously entered names list in the “Names” window to the appropriate microphone unit in the “Units” window.



Enter participants under “Names” menu item

### 5.2.3 Room View



Create conference room

- Select the “Room View” icon to open the window.
- On the left hand side the conference room will be displayed. If you click with the right mouse button on the table, you can select a different table shape. If you select “Custom”, you can also load your own view of a conference room.
- If you want to group the participants around the table, open the “Units” window and drag and drop the participant units from the “Units” list to the appropriate place in the “Room View” window. With the “Units” icon in the menu bar you can open or close the “Units” list.
- As an alternative you can open the “Names” window and drag and drop the participant names from this list into the “Room View” window and place them on the appropriate icons.
- The chairman unit is always marked with a star.
- In the “Room View” window the operator of the PC can turn on or off the microphone units, recognise the battery status of each microphone unit and the zone, when the microphone units have been allocated to certain zones (one blue dot = zone 1, two blue dots = zone 2 etc.).

As soon as the participants have been placed in the “Room View” window, the following changes are possible when you click with the right mouse button on the participant’s name:



**Clear name**

- Highlight one or more icons for the participants in the “Room View” window and click with the right mouse button.
- Select “Clear name” from the menu. The names of the participants will be removed and listed in the list of names. The “Room View” window will display the device ID of the microphone unit instead of the name.



**Change Zone**

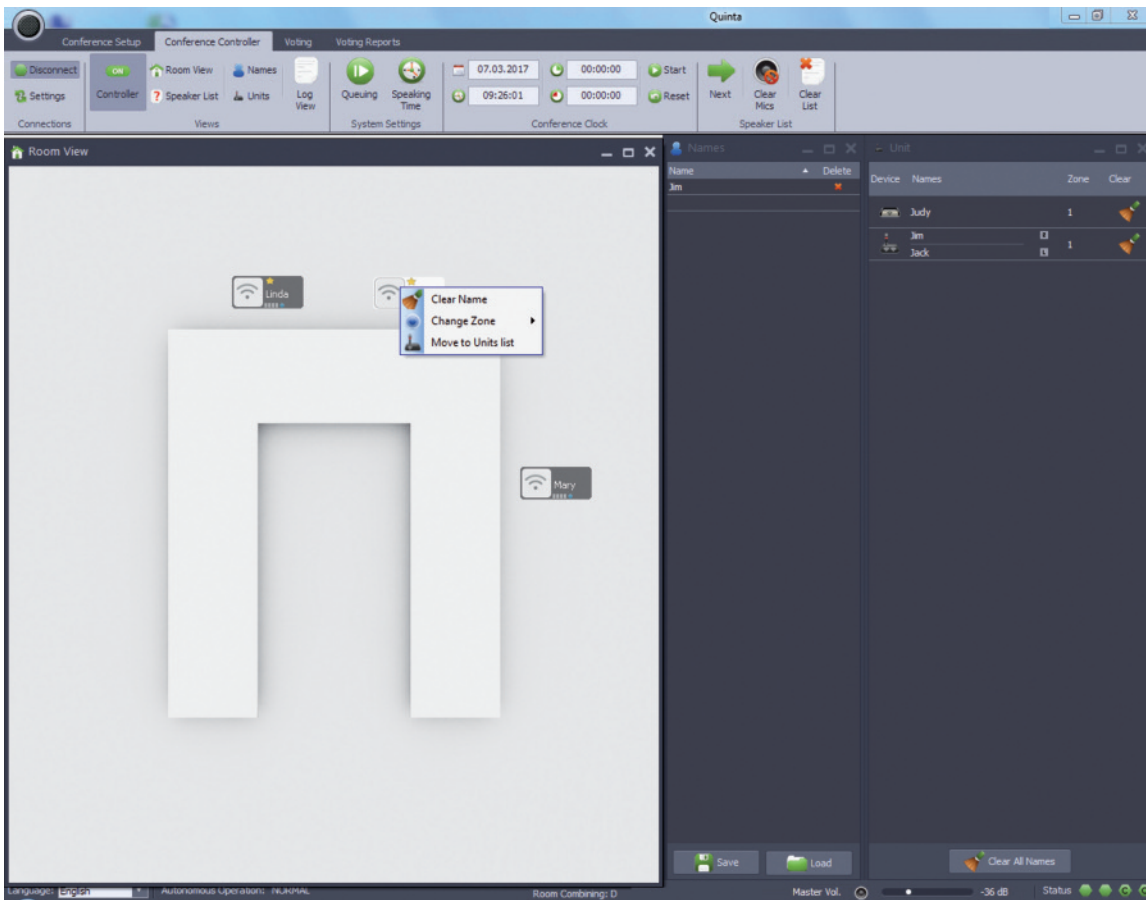
- Highlight one or more icons for the participants in the “Room View” window and click with the right mouse button.

- Select “Change Zone” from the menu. The selected zone will be stored within the microphone unit.



**Move to Units list**

- Highlight one or more icons for the participants in the “Room View” window and click with the right mouse button.
- Select “Move to Units list”. The selected microphone units will not be displayed in the “Room View” window, but in the “Unit” window.
- The icons for the participants can be dragged and dropped between the windows “Room View” and “Unit”.

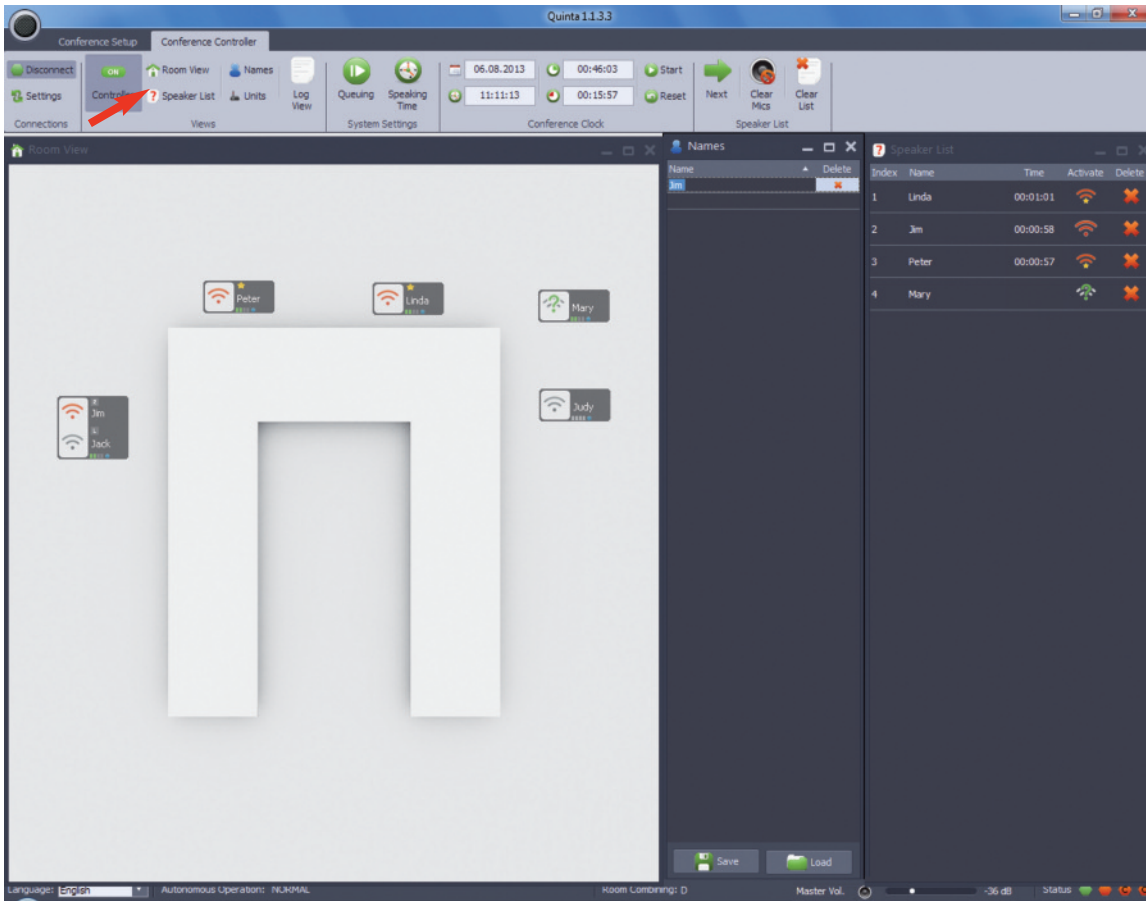


Placing the participants in the room view

### 5.2.4 Request-To-Speak List

- In the Controller mode the conference system always operates in the request-to-speak mode, where the microphone of the delegate

units is released by the chairman unit or the operator at the PC. The Controller must be activated (Controller display “ON”).



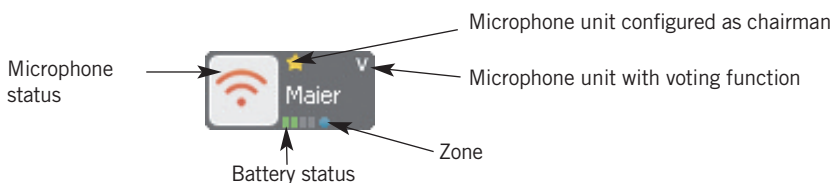
Display of request-to-speak in the room view and speaker list

- Select the “Request” icon in the menu bar to open the request-to-speak list. In this list all participants, who enter a request-to-speak are listed.
- Depending on the status the following icons are displayed.

- Microphone unit is turned on; microphone is deactivated
- Microphone unit is turned on; microphone is activated
- Microphone unit in waiting list for request-to-speak
- Speech time has elapsed
- Microphone unit which has been configured as chairman

**Note**

If it is not possible to allocate a delegate microphone unit, although nobody is speaking, check if four microphone units have been defined as chairman microphone units. In this case all available audio channels are reserved for chairmen.





### 5.2.4.1 How to Process the Requests-To-Speak

- There are two possibilities to process the requests-to-speak in the “Speaker List”.

#### 1. Automatic processing of the requests to speak

Activate the “Queuing” icon in the menu bar. All microphones registered in the request-to-speak list are confirmed and released, if the maximum number of open microphones is not exceeded.

The ready-to-speak status of the microphone is indicated by a red LED of the gooseneck microphone (Quinta MU 23/22/21) or the red LED strips (Quinta MU 33/31) and the green backlit microphone button.

The microphone of the chairman microphone unit is always released at once and does not depend on the sequence and number of open microphones.

#### 2. Manual processing of the requests to speak

Activate the “Next” icon in the menu bar. The requests to speak of the participants will be displayed in the “Speaker List” and are marked with a question mark. Select the question mark of the participant whose microphone you would like to release. The question mark will disappear and the microphone will be displayed as activated.

The ready to speak status of the microphone is displayed by a red LED of the gooseneck microphone (Quinta MU 23/22/21) or the red LED strips (Quinta MU 33/31) and the green microphone button.

The microphone of the chairman microphone unit is always released at once and does not depend on the sequence and number of open microphones.

### 5.2.4.2 How to Delete Microphones from the Speaker List

- When you select the “Clear List” icon in the menu bar, you can clear all devices / microphones from the speaker list except the chairman microphone unit.

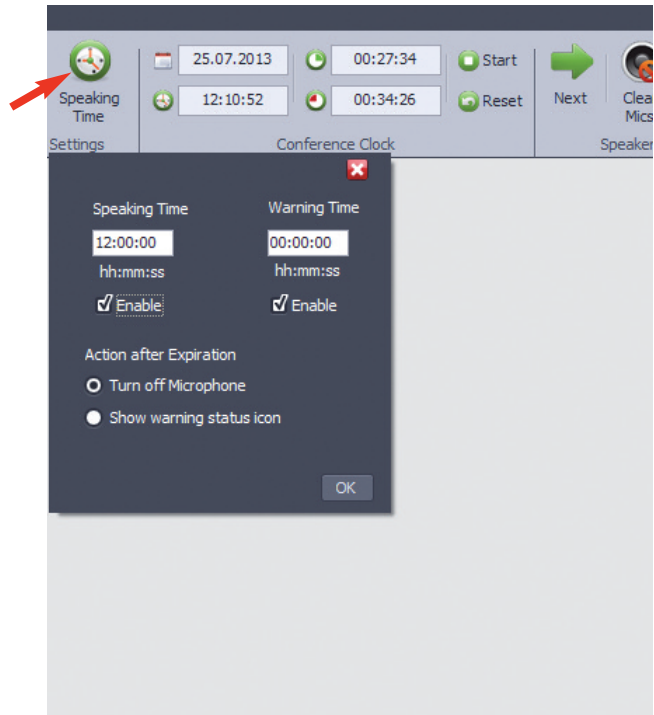
### 5.2.4.3 How to Clear Microphones

- When you select the “Clear Mics” icon in the menu bar, you can clear all active microphones of the microphone units except the chairman microphone unit. The device / microphone is also removed from the list.



### 5.2.5 How to Set the Speaking / Warning Time

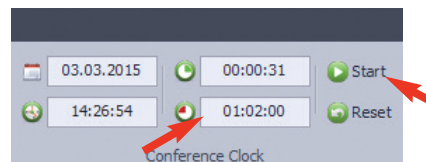
- In the “Speaking Time” window you can enter the speaking time of the delegates.
- Select “Speaking Time” to open the appropriate window.
- Enter the speaking time in the format HH:MM:SS.
- Tick the “Enable” check box. All delegates have the same speaking time.
- If the speaking time is to be unlimited, remove the tick from the “Enable” check box.
- The speaking time cannot be defined for chairman microphone units.
- In the “Warning Time” field you can enter the time the LED of the gooseneck microphone (Quinta MU 22/21) or the LED strips (Quinta MU 31) of the delegate microphone unit is to flash, before the set speaking time has expired. Enter the time in the format HH:MM:SS.
- The warning time is only activated when the “Enable” check box is ticked.
- If the warning time is to be deactivated for all delegate units, remove the tick from the “Enable” check box.
- The warning time cannot be defined for chairman microphone units.
- Under “Action after Expiration” in the same window you can adjust, what is to happen when the speaking time is over.
- When you tick “Turn off Microphone” option, the microphone units are switched off automatically when the speaking time is over.
- When you tick the “Show warning status icon” option, the icon of the activated microphone in the conference room window changes to the icon when the talk time has expired. The operator at the PC can decide, if he switches the microphone unit off or not. The microphone unit is switched off by left clicking the microphone icon.
- To close the window select “OK”.



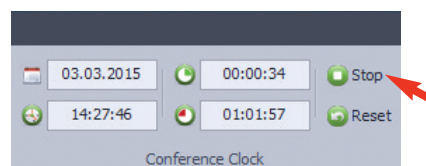
Configure the speaking / warning time

### 5.2.6 How to Set the Duration of the Meeting

- If you want to set the duration of the meeting in order to check how much time of the meeting has passed, you can enter the duration in the “Conference Clock”.
- In the field lower right you can enter the duration of the meeting in the format HH:MM:SS, e.g. 04:30:00 (i.e. the meeting will take 4 hours and 30 minutes). Press the Enter key of your keyboard to save the time.
- Once the meeting start, select “Start”. In the field upper right you can see how much time of the meeting has already passed.
- With “Reset” you can reset the time to the stored time value.
- When the meeting is interrupted, you can stop the time with “Stop”.



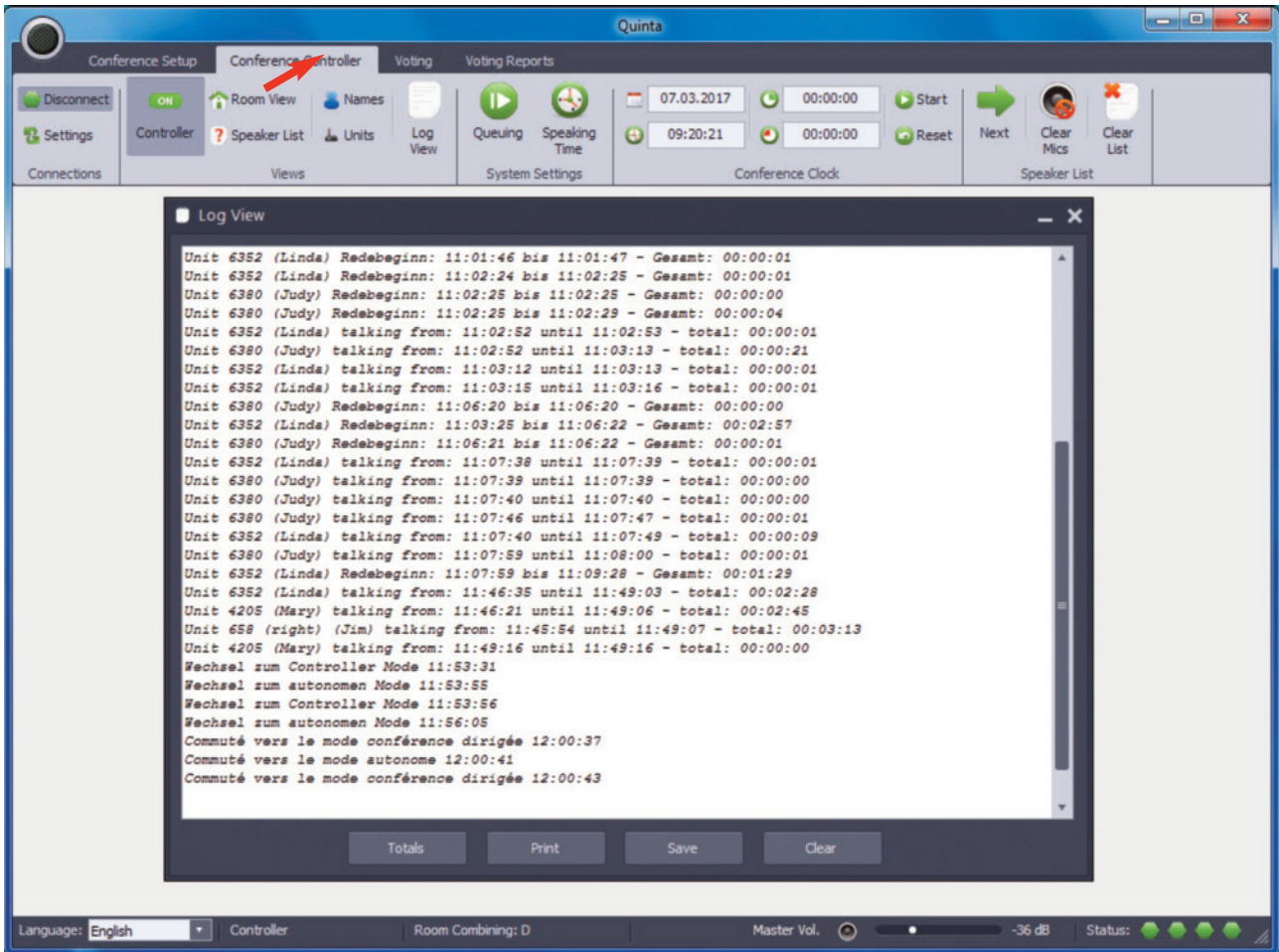
Enter the duration of the meeting and start the conference clock



Stop the conference clock

### 5.2.7 Log View

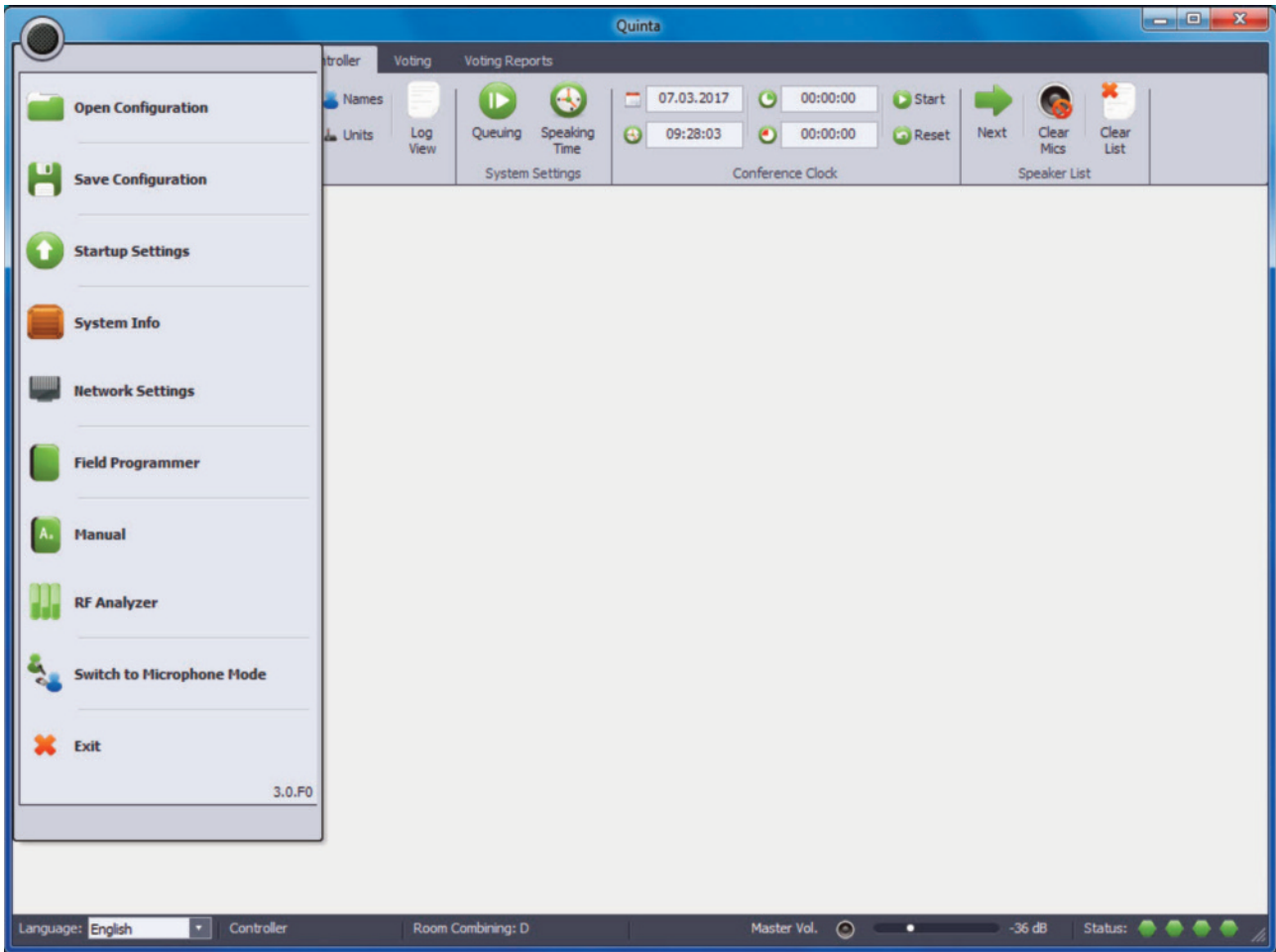
- Select “Log View” in the menu bar to open a window where you can display or print a detailed list of all conference events.
- Select the “Totals” button to display the list. This list consists of two parts:
  1. Chronological list of the events
  2. Listing of the whole speaking time
- Select “Print” when you want to print the list.
- Select “Save” when you want to save the list.
- Select “Clear” when you want to clear the list.
- The log also runs when the Controller mode is not active, i.e. when the autonomous mode is active. In this case, however, the Quinta Conference Software must be opened and connected.



Open the log view

### 5.3 More Functions

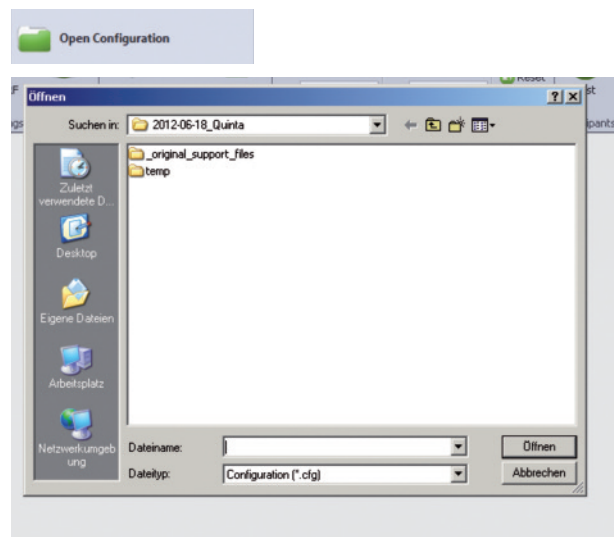
If you click in the Conference Mode of the Quinta software on the black button at the top left, you can open a menu where you will find more functions.



Open the menu with more functions

#### 5.3.1 How to Open a Configuration

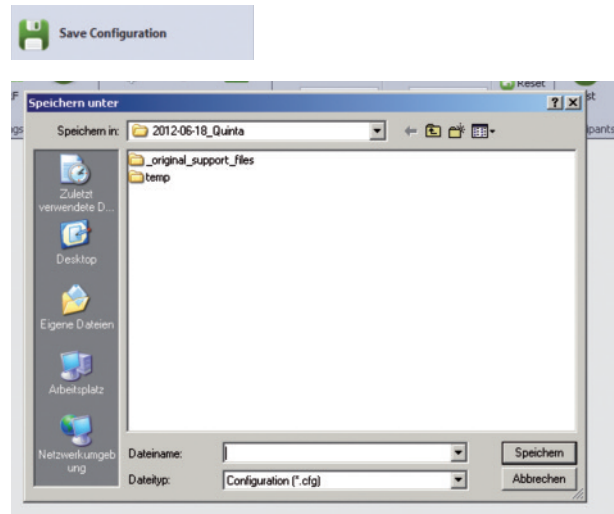
- In order to open an existing configuration, select “Open Configuration”.
- A dialogue box will be opened, where you can select the requested configuration.
- Select the “Open” button to open the selected configuration.



Open an existing configuration

### 5.3.2 How to Save a Configuration

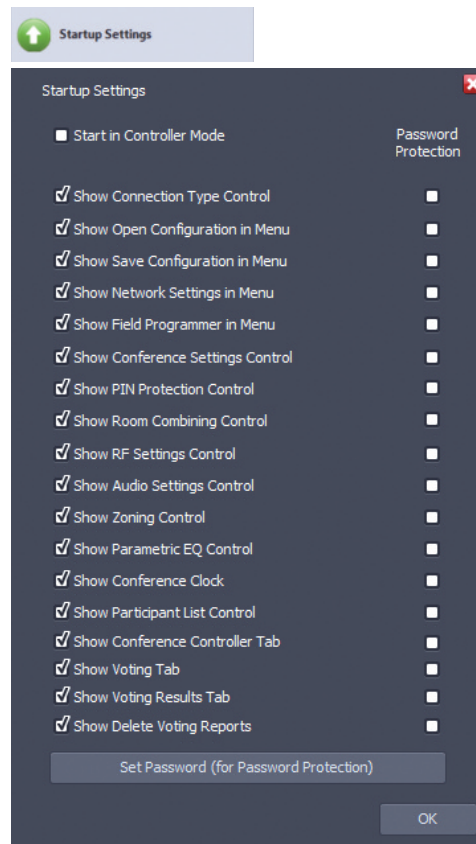
- To save a configuration select “Save Configuration”.
- A dialogue box will be opened where you can enter a name for the configuration and save it.
- Select the appropriate location where you want to save the configuration and select the “Save” button.
- A configuration contains:
  - the list of participants with names
  - conference-specific settings
  - audio settings
  - Controller settings (room view etc.)



Save a new configuration

### 5.3.3 Startup Settings

- Select “Startup Settings” when you want to select which sub-menus are to be displayed in the Quinta Software and which menus are to be protected with a password.
- If some menus are not to be displayed, remove the tick from the appropriate check box and select “OK”. By hiding individual menus you can avoid that other users change system configurations accidentally.
- If you want to protect the Quinta system with a password, select the “Set Password (for Password Protection) button. Enter the requested password into the field “New Password” and confirm it by entering it again into the field “Confirm new password”. Afterwards, select the “OK” button.  
The password is stored in the control unit and the PC connected to the control unit. It is valid for the whole Quinta system. It must also be used as login when using the **Quinta Web Server** or when connecting another PC to the control unit. When you want to access the control unit externally via RS 232 or Ethernet (e.g. media control system), you must also enter the password.
- If you want to protect certain menus with this password, tick the appropriated check box in the “Password Protection” column. The password is only stored on the PC connected to the control unit.
- If you want to change an existing password, select the “Set Password” button and enter the current password. Afterwards you can enter the new password and confirm it once again. The message “Password has been changed!” will be displayed. Now the new password will be active.
- If you want to delete the password, enter the old password, leave the other two fields below empty and select the “OK” button.
- If the Controller mode is to be started immediately when the software is started, tick the “Start in Controller Mode” check box and select the “OK” button. When the Quinta software is started again, the Controller mode will be started immediately.



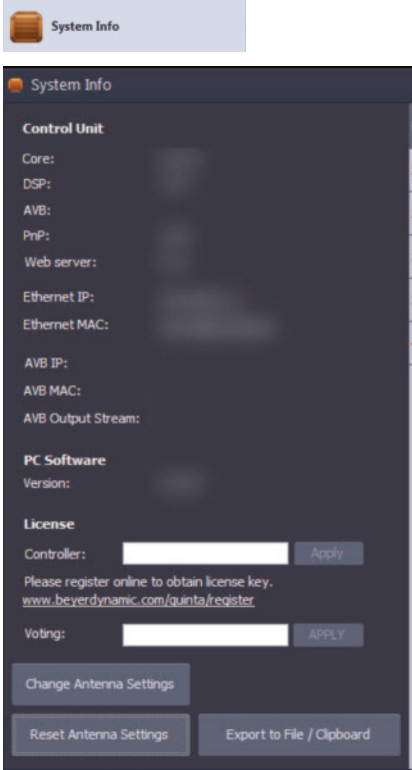
Configure startup settings

### 5.3.4 Licensing

- The supplied software of the Quinta CD is free of charge.
- If you want to use the Controller, however, you will need a license key, which you can obtain from beyerdynamic free of charge. Register via the link in the “System Info” menu under “License” or directly via the beyerdynamic website at: [www.beyerdynamic.de/quinta/register](http://www.beyerdynamic.de/quinta/register).
- For the registration you will need the Ethernet MAC address of the Quinta CU/RS control unit, which you will find in the “System Info” menu under “Ethernet MAC”.
- **Important:** Make sure there is a connection between the Quinta software and the Quinta CU/RS control unit connected to the PC by selecting “Connect” under “Connections”.
- To install an aquired license enter the received license key into the “License” field and select the “Apply” button. The controller can immediately be used.

**Note:**

- The license key is installed on the Quinta CU/RS control unit. You can use the functionality of this license with any PC with the Quinta software.



System Info

System Info

**Control Unit**

Core:  
DSP:  
AVB:  
PnP:  
Web server:  
Ethernet IP:  
Ethernet MAC:  
AVB IP:  
AVB MAC:  
AVB Output Stream:

**PC Software**

Version:

**License**

Controller:

Please register online to obtain license key.  
[www.beyerdynamic.com/quinta/register](http://www.beyerdynamic.com/quinta/register)

Voting:

Enter license number

### 5.3.5 System Info

- Select “System Info” if you want to check if the control unit, PC software, licensing and microphone units are up-to-date. The firmware version of the control unit and all registered microphone units is displayed here.
- Select the “Export to File / Clipboard” button to save the System Info in a text file.
- With the “Reset Antenna Settings” button you can reset the entries for region, antenna and antenna cable made with the initial operation. This is important when the system is used in different region, e.g. in the rental business.



**Warning:** This does not refer to USA, Canada and Japan. Settings for USA, Canada and Japan are permanently applied and cannot be changed.

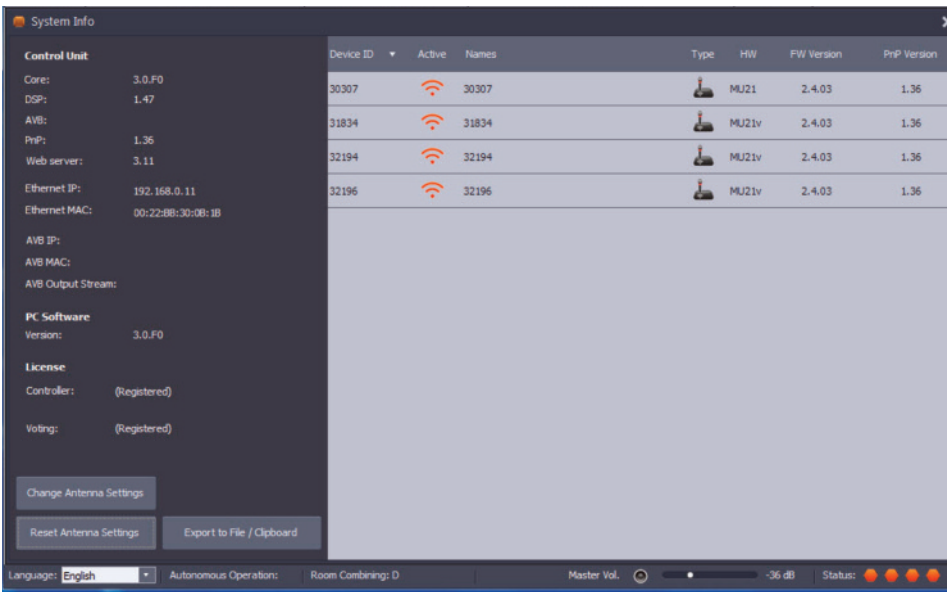
- If you want to reset the antenna settings, the Quinta CU displays the menu for region selection. The Quinta RS control is reset to the factory setting “global region” i.e. only 2.4 GHz is active. Depending on the region, the RF bands in the 5.2\* or 5.8\* GHz range are also available.

- When the Quinta RS control unit is turned on for the first time, it is set to the RF band of 2.4 GHz\* which has been selected at the factory. In order to select your region click the “Change Antenna Settings” button.
- In the “Select Region” window select the region in which you are using the control unit.

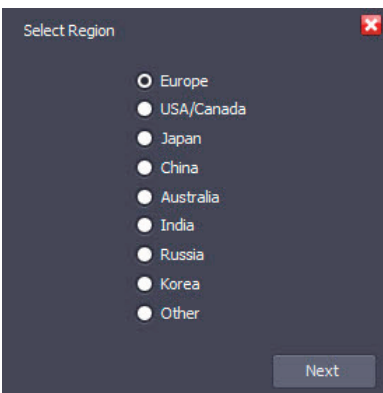
**Important:**  
**Wrong settings in the “Select Region” window can lead to an illegal operation of the system!**

- Click the “Next” button.
- Select the antennas connected to the control unit and click the “Next” button.
- In order to confirm your settings click the “Confirm” button. The control unit will restart automatically.

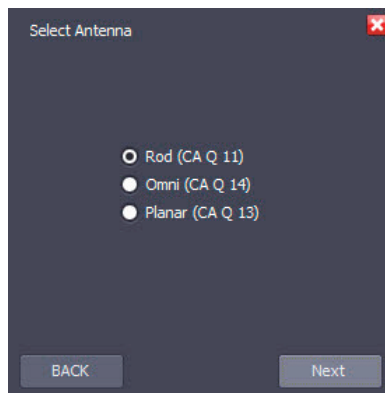
**\*Note:**  
 The availability of the RF bands 2.4; 5.2 or 5.8 GHz depends on the selected region.



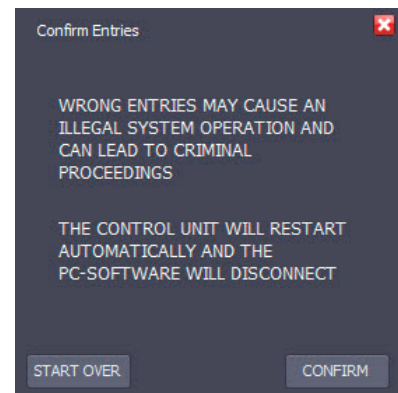
Display of licensing and firmware version



Select region



Select antennas

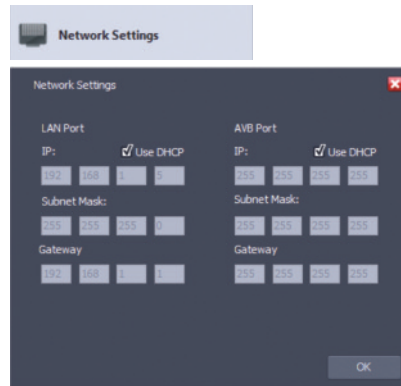


Confirm entries



### 5.3.6 Network Settings

- Select “Network Settings” when the Quinta conference system operates in a network.
- For the Ethernet interface you can manually enter information about the IP address, subnet mask or gateway or allocate via a DHCP server when you tick the “Use DHCP” check box. You must restart (turn off and on again) the control unit so that the IP address allocated by a DHCP server is accepted.
- For the AVB interface you can manually enter information about the IP address, subnet mask or gateway or allocate via a DHCP server when you tick the “Use DHCP” check box.  
**Note:** At the AVB interface commands cannot be used. For this the Ethernet interface is available.



Configure network settings

### 5.3.7 Field Programmer

- The “Field Programmer” function is used for reprogramming the hardware components of the Quinta system. With the “Field Programmer” you can update the following system components:

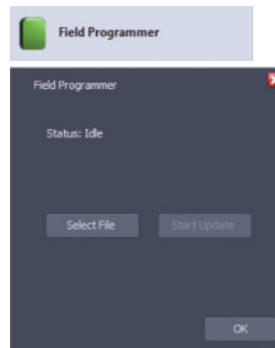
Control unit:                   - Kernel  
                                       - DSP  
                                       - AVB Module

Microphone units:           - Kernel

- In order to receive information about available updates, please register your Quinta system at: [www.beyerdynamic.com/quinta/register](http://www.beyerdynamic.com/quinta/register).
- A system update also includes detailed installation instructions.

**Important:**

The “Field Programmer” function should be operated by qualified and instructed staff only.



Updating system components

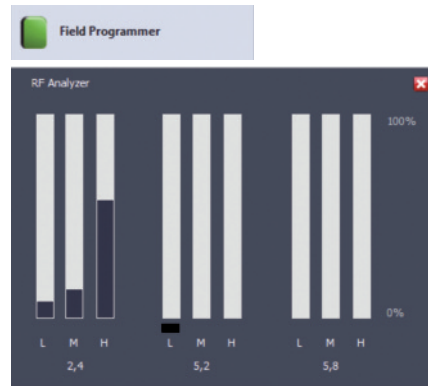
### 5.3.8 Manual

- In order to open the manual select “Manual”.



### 5.3.9 RF Analyzer

- The “RF Analyzer” displays how much the frequency range is already used by other devices that use the same frequencies (e.g. other Quinta systems, WiFi, etc.) .
- Select “RF Analyzer” to find out which frequency band is most suitable.
- To interpret the displayed values correctly, a detailed knowledge about other wireless technologies is required. A WiFi network, for example, is only displayed with higher values when data traffic is actually used. It is not displayed of which type of wireless technology the devices are that show values. The bars are an indicator that indicate the current wireless energy / time on the specific frequencies.



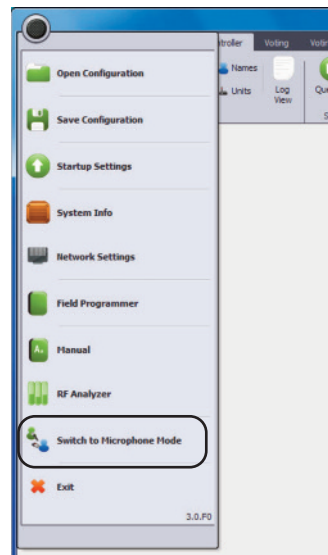
Display of existing RF activity

### 5.3.10 Microphone Mode

- In the microphone mode all devices (microphone units, boundary microphones and handheld transmitters) have the functionality of a wireless microphone.
- If you want to access the microphone mode, select the “Switch to Microphone Mode” option from the black dot menu. The control unit will be restarted and has to be connected with the software again.

**Important:**

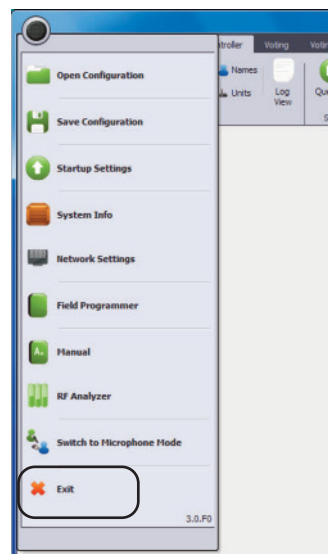
- The microphone mode will only work when the firmware of the control unit, microphone units, boundary microphones and handheld transmitters is at least 3.0 or higher.
- The DSP version of the control unit should be at least 1.47 or higher so that the microphone mode will work. If the DSP version of the control unit is 1.44, the microphone mode will not work.



Select “Switch to Microphone Mode” option

### 5.3.10 How to Close the Program

- To close the Quinta software select “Exit”.





## 6. Voting Function

- If you would like to use the voting function of the Quinta software, you need a special license number, which is not included and therefore subject to a charge.
- **Important:** First of all establish a connection between the Quinta software and the Quinta CU control unit connected to the PC by selecting "Connect" in the "Connections" area.
- In order to install the acquired license enter the received license number in the "License" entry field and select the appropriate button. Afterwards you can use the voting function.

### 6.1 How to Prepare Voting

- In order to proceed with voting, there are some preparations necessary, which will be described in the following.

#### 6.1.1 How to Open the Participants List

- Select "Participants" in the "Lists" area. The participants list will be opened. All the voting microphone units can be clearly identified by a check box in the "Voting" column. Microphone units without a voting function can be identified by a red crossed out circle. For more information about the registration of participant's microphone units, please refer to chapter 6.5 "Participants List".
- In the "Voting" column you can determine if the participant may vote by activating or deactivating the appropriate check box.
- In the "Results" column you can recognise how the individual participant has voted in public votings. In secret votings, only the "Voted" note indicates that the participant has voted, but not how.

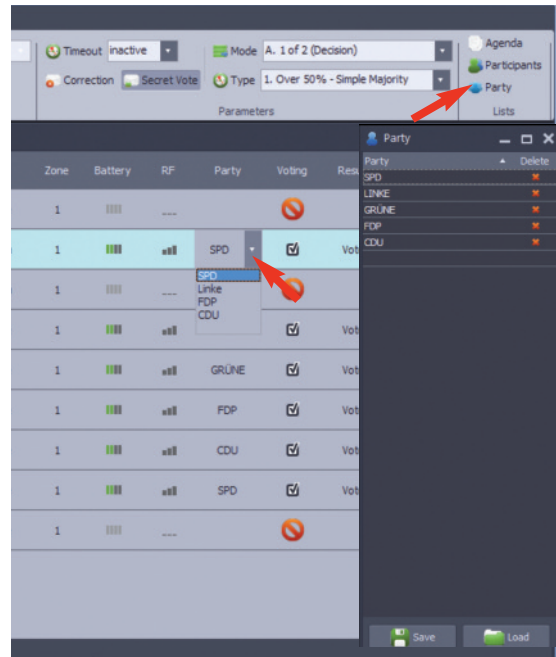
The screenshot shows the Quinta software interface with the "Voting" tab selected. The interface includes a top navigation bar with "Conference Setup", "Conference Controller", "Voting", and "Voting Reports". Below this is a control panel with buttons for "Start", "Abort", "Clear Data", "Screen Settings", "Info Screen", "Room View", and "Agenda Voting". The "Voting" section shows "Agenda No. Ad Hoc", "Timeout 60", "Mode A. 1 of 2 (Decision)", "Correction", "Secret Vote", and "Type 1. Over 50% - Simple Majority". The "Lists" section has "Participants" and "Party" options. The main area displays a "Participants" table with columns for Device ID, Active, Name, Position, Type, Function, Zone, Battery, RF, Party, Voting, Results, Delete, and Power Off. The table lists 8 participants, including Beier (Chairman), Mann (Delegate), Schulze (Delegate), Schmidt (Delegate), Rudolf (Delegate), Müller (Delegate), Maier (Chairman), and Neuer (Delegate). At the bottom, there are status indicators for "Registered Units: 8 / Online: 8" and "Unregistered Units: 0", along with buttons for "Device Register", "Chairman Function", "Edit", "Refresh", "Power Off", "Remove/Register", and "Voting". The status bar at the bottom shows "Language: English", "Autonomous Operation: NORMAL", "Room Combining: A", and "Status" with four green indicator lights.

Device ID	Active	Name	Position	Type	Function	Zone	Battery	RF	Party	Voting	Results	Delete	Power Off
18547	<input checked="" type="checkbox"/>	Beier		Chairman	Chairman	1				<input type="checkbox"/>		<input type="checkbox"/>	<input type="checkbox"/>
18976	<input checked="" type="checkbox"/>	Mann		Delegate	Delegate	1				<input type="checkbox"/>		<input type="checkbox"/>	<input type="checkbox"/>
18596	<input checked="" type="checkbox"/>	Schulze		Delegate	Delegate	1			CDU	<input checked="" type="checkbox"/>		<input type="checkbox"/>	<input type="checkbox"/>
18585	<input checked="" type="checkbox"/>	Schmidt		Delegate	Delegate	1			FDP	<input checked="" type="checkbox"/>		<input type="checkbox"/>	<input type="checkbox"/>
18582	<input checked="" type="checkbox"/>	Rudolf		Delegate	Delegate	1			GRÜNE	<input checked="" type="checkbox"/>		<input type="checkbox"/>	<input type="checkbox"/>
18581	<input checked="" type="checkbox"/>	Müller		Delegate	Delegate	1			LINKE	<input checked="" type="checkbox"/>		<input type="checkbox"/>	<input type="checkbox"/>
18525	<input checked="" type="checkbox"/>	Maier		Chairman	Chairman	1			SPD	<input checked="" type="checkbox"/>		<input type="checkbox"/>	<input type="checkbox"/>
18600	<input checked="" type="checkbox"/>	Neuer		Delegate	Delegate	1			SPD	<input checked="" type="checkbox"/>		<input type="checkbox"/>	<input type="checkbox"/>

Open the "Voting" tab and participants list

### 6.1.2 How to Enter the Party

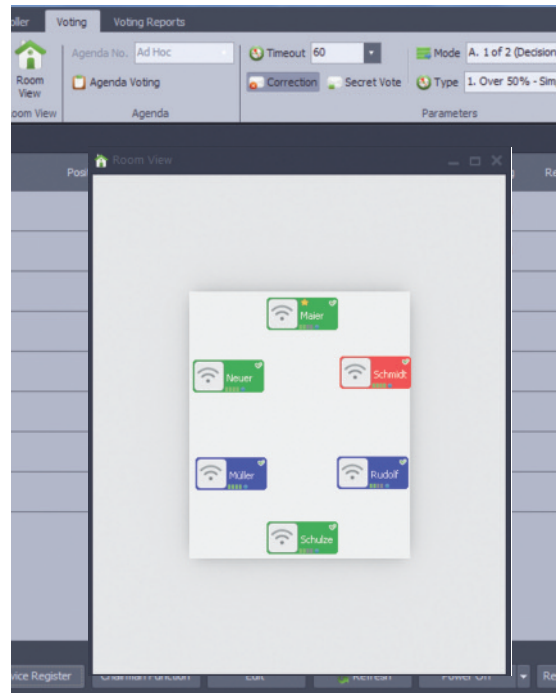
- Users with a license for the voting application can allocate the participants to a party if required. Select the voting tab and “Party” in the “Lists” area. You can enter the individual parties in the list of the opened window.
- In the “Participants” list you can allocate the participants to the appropriate parties. Highlight the participants, select the “Edit” button and choose the appropriate party from the drop-down menu in the “Party” column.



Enter and allocate a party

### 6.1.3 Open/Create the Room View

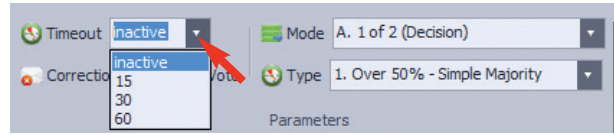
- In order to open the view of the conference room, select the “Room View” icon.
- Create the room view via the “Conference Controller” beforehand. Please refer also to chapter 7.3 “Room View”.
- With public votings you can recognise by the colour of the icons for the participant microphone units how the individual participant has voted.
  - Green = Yes
  - Red = No
  - Blue = Abstain
  - Grey = Did not vote
- With “Multiple Choice” votings (2 out of 3 or 3 out of 3) you can enter several votes. As this cannot be indicated by colours, the icons remain grey. The tick symbol in the upper left corner of the icon, however, always indicates that one or more votes have been cast.
- With secret votings you cannot recognise how the participants have voted, the tick symbol in the upper right corner of the icon, however, indicates that a vote has been cast.
- When a voting the “Room View” window will open automatically.



Open the “Room View” window

### 6.1.4 How to Set the Voting Time

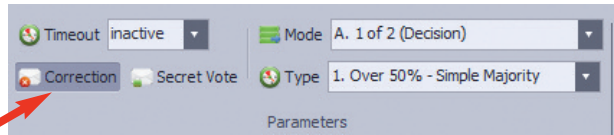
- In the drop-down menu next to the “Timer” icon you can select the time when the voting should be ended automatically or if the voting should be started and ended manually (inactive).
- If a time has been set, the last 10 seconds of the voting will be displayed in red in the “Voting Information” and “Info Screen” windows.



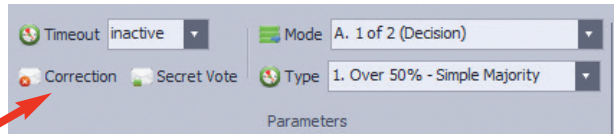
Set the voting time

### 6.1.5 Permit Changing the Vote

- If the participants may change their selected option during the voting, activate the “Correction” icon (highlighted in dark grey).
- If the participant is not allowed to change the once selected option, the “Correction” icon must not be activated (highlighted in light grey).



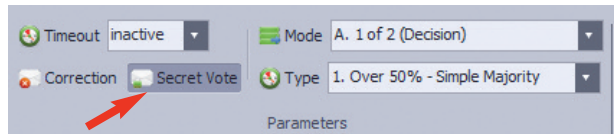
“Correction” function activated



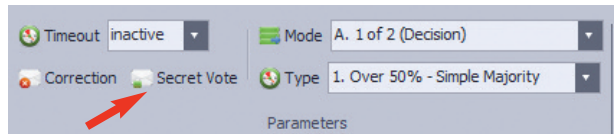
“Correction” function is not activated

### 6.1.6 Secret or Public Voting

- If the voting is to be secret, activate the “Secret Vote” icon (highlighted in dark grey). In secret votings you cannot recognise how the participant has voted.
- If the voting is public, the “Secret Vote” icon must not be activated (highlighted in light grey).
- In public votings the results on how the participants have voted will be displayed in the “Room View” and the “Participants” windows.
- In secret votings you can only recognise that the participant has voted, but not how.



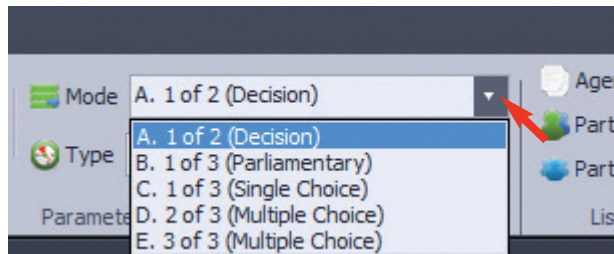
“Secret Vote” function activated



“Secret Vote” function is not activated

### 6.1.7 How to Set the Voting Mode

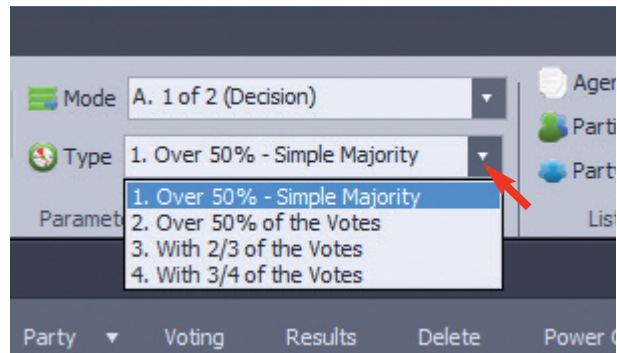
- In the “Mode” drop-down menu you can select the voting mode. The following options are available:
  - 1 out of 2 (Decision)
  - 1 out of 3 (Parliamentary)
  - 1 out of 3 (Single Choice)
  - 2 out of 3 (Multiple Choice)
  - 3 out of 3 (Multiple Choice)



Select the voting mode

### 6.1.8 How to Set the Majority

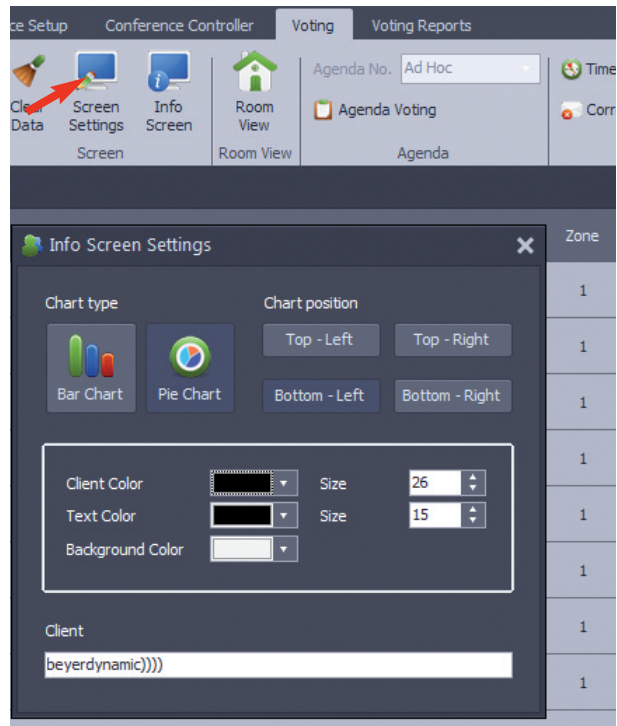
- In the "Type" drop-down menu you can select the majority of the voting. The following options are available:
  - Over 50% of the simple majority (abstentions are **not** classified as valid votes)
  - Over 50% of the votes (abstentions **are** classified as valid votes)
  - With 2/3 of the votes (abstentions **are** classified as valid votes)
  - With 3/4 of the votes (abstentions **are** classified as valid votes)



Set the majority

### 6.1.9 How to Set the Display of the Screen Settings

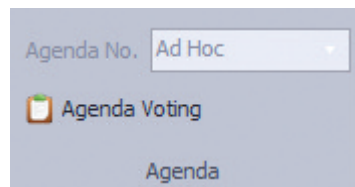
- If you would like to display the voting result as a pie or bar chart on a public screen, select in the "Screen" area the menu item "Screen Settings". In the "Info Screen Settings" window you can then select a pie or bar chart and the chart position on the screen. Furthermore, you can select the text colour, background colour and the size of the font. In the "Client" field at the bottom you can enter the company's name or the designation of the meeting.



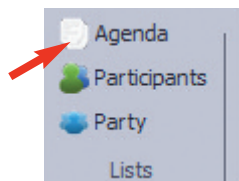
Configure the display of the voting result

### 6.1.10 How to Set the Voting Option

- You can choose between a so-called "Ad Hoc" voting and an agenda voting.
- With an "Ad Hoc" voting, please make all the settings as described in item 9.1.1 to 9.1.9 before performing the voting.
- With an agenda voting you select the "Agenda" symbol in the "Lists" area. In the "Agenda" window you can now list all agenda items for which a voting is to take place.
  - At "No." enter the number of the agenda item e.g. 1. (Note: Mandatory field!)
  - At "Date" you can select the date on which it is to be voted on this agenda item.
  - At "Subject" you can enter the subject of the voting.
  - At "Notes" you can enter comments.
  - At "Voting Mode" you can select the voting option.
  - At "Voting Type" you can select the majority of the voting.
- With the three buttons at the bottom of the window you can add a line ("Append"), insert a line between two lines ("Insert") or delete a line ("Delete").



Activate the "Ad Hoc" voting option



Activate the "Agenda" voting option

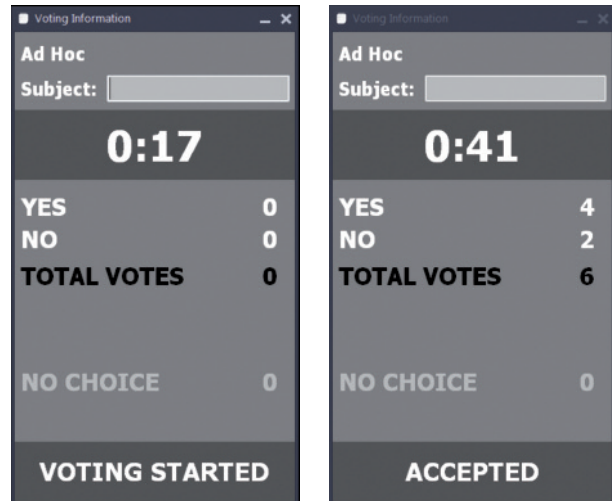
## 6.2 How to Perform Voting

### 6.2.1 How to Perform an Ad Hoc Voting

- Make all the settings as described in item 9.1.1 to 9.1.10.
- In order to start the voting select “Start” in the menu bar at the top left.
- The “Room View” and “Voting Information” windows will be opened. In the “Voting Information” window you can enter the subject of the voting in the appropriate field.
- If there is no time defined with the “Timer”, please select “End” in the menu bar the top left to end the voting.  
If there is a time defined with the “Timer”, the last 10 seconds of the voting time will be displayed in red.
- After the preset time is over, the voting will automatically be ended and the votes are collected.
- In order to interrupt the voting without collecting the results, select “Abort” during the voting.
- The voting result will be displayed in the “Voting Information” window.

#### Important:

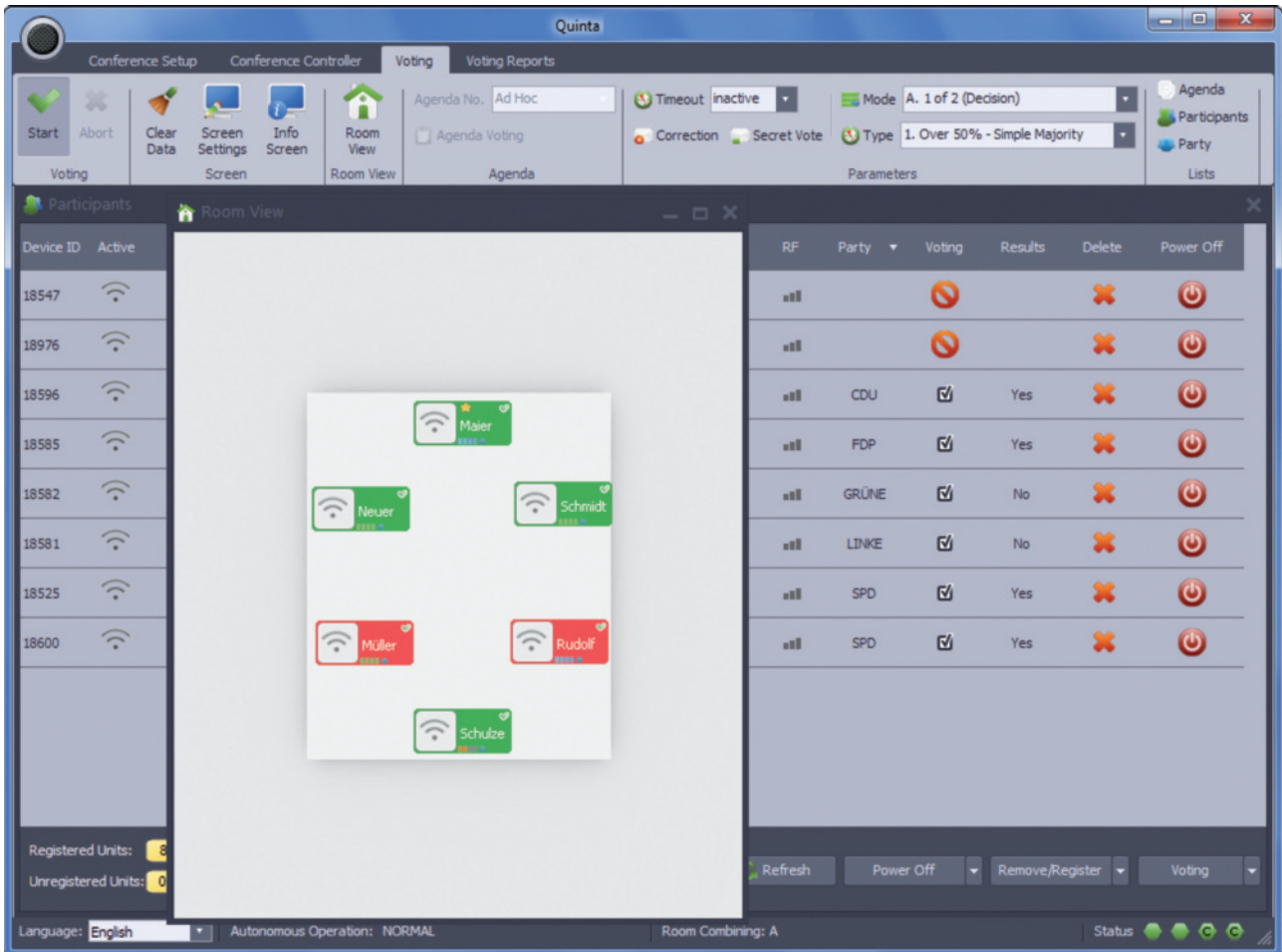
- “Offline Units” displayed. Should one or more microphone units fail during the voting (e.g. the device is turned off, battery is empty or the device is out of the radio range), then the number of “Offline Units” is immediately displayed after collecting the results in the “Voting Information” window. The operator of the system can react to this information and solve the problem and perform the voting again by pressing the “Repeat” button.
- Please note that during a voting the participants **with** voting microphone units cannot turn on the microphone. This does not refer to microphone units **without** voting function.
- When the Quinta software is operated in the controller mode, the operator can turn the microphone units on or off via the “Room View” window on the PC. Please refer also to chapter 7.3 “Room View”.



Voting information Start / End

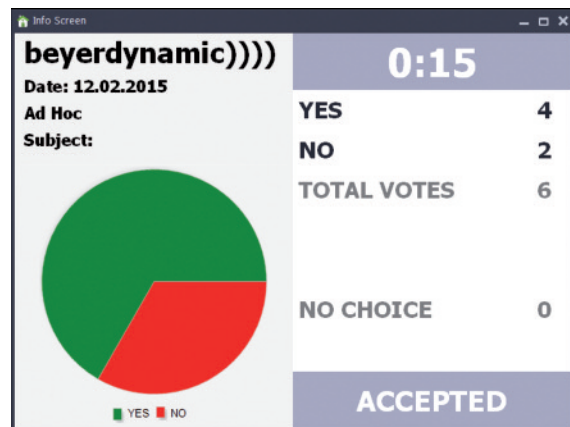


- When the “Room View” and/or “Participants” windows are opened, you can see how each participant has voted, if it is not secret voting.



Display of voting results in the “Room View” and “Participants” windows

- In order to display the voting results on a separate screen select “Info Screen” in the menu bar. Depending on the setting in the menu item “Info Screen Settings”, the result is displayed as pie or bar chart.

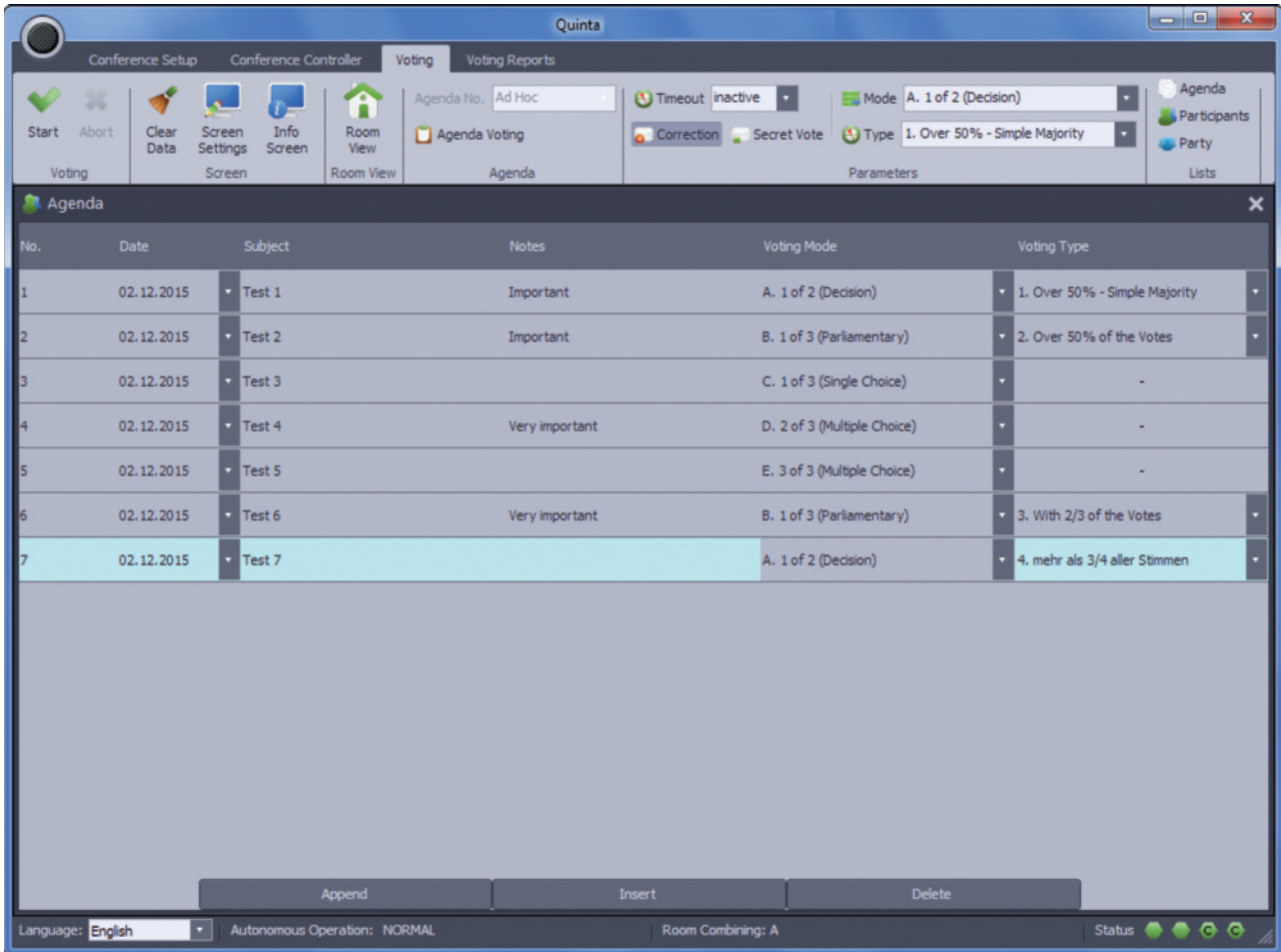


Display of the voting result on a separate screen

### 6.2.2 How to Perform an Agenda Voting

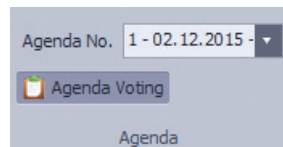
- Make all the settings as described in item 9.1.1 to 9.1.10.
- Select the “Agenda” symbol in the “Lists” area. The “Agenda” window will be opened.
- You can enter all the items on which there is to be a voting.  
**No.:** At “No.” you can enter the appropriate item number.  
**Date:** At “Date” you can select the date on which it is to be voted on this agenda item.  
**Subject:** At “Subject” you can enter the subject of the voting.  
**Notes:** At “Notes” you can enter comments.  
**Voting Mode:** At “Voting Mode” you can select the voting option. Refer also to chapter 9.1.7 “How to Set the Voting Mode”.

- Voting Type:** At “Voting Type” you can select the majority of the voting.
- In order to add further lines for more voting items, select the “Append” button.
  - If you want to insert a line between two lines, highlight the line above which you want to insert another line and select the “Insert” button.
  - If you want to delete a line, highlight the appropriate line and select the “Delete” button.

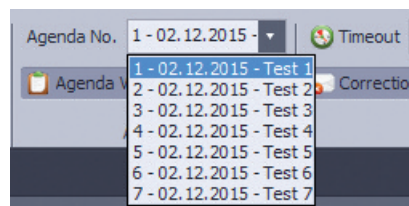


Enter agenda

- Once you have entered all items, select the “Agenda Voting” in the “Agenda” area. In the menu bar in the “Agenda No.” field the items entered in the “Agenda” window are displayed in the drop-down menu, which are processed one after another in the votings.



Start the Agenda voting



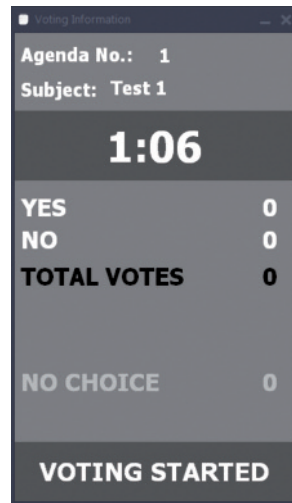
Agenda voting items



- Make all the settings as described in item 9.1.1 to 9.1.10.
- In order to start the voting select “Start” in the menu bar at the top left.
- The “Room View” and “Voting Information” windows will be opened. In the “Voting Information” window you can enter the subject of the voting in the appropriate field.
- If there is no time defined with the “Timer”, please select “End” in the menu bar at the top left to end the voting.  
If there is a time defined with the “Timer”, the last 10 seconds of the voting time will be displayed in red.
- After the preset time is over, the voting will automatically be ended and the votes are collected.
- In order to interrupt the voting without collecting the results, select “Abort” during the voting.
- The voting result will be displayed in the “Voting Information” window.

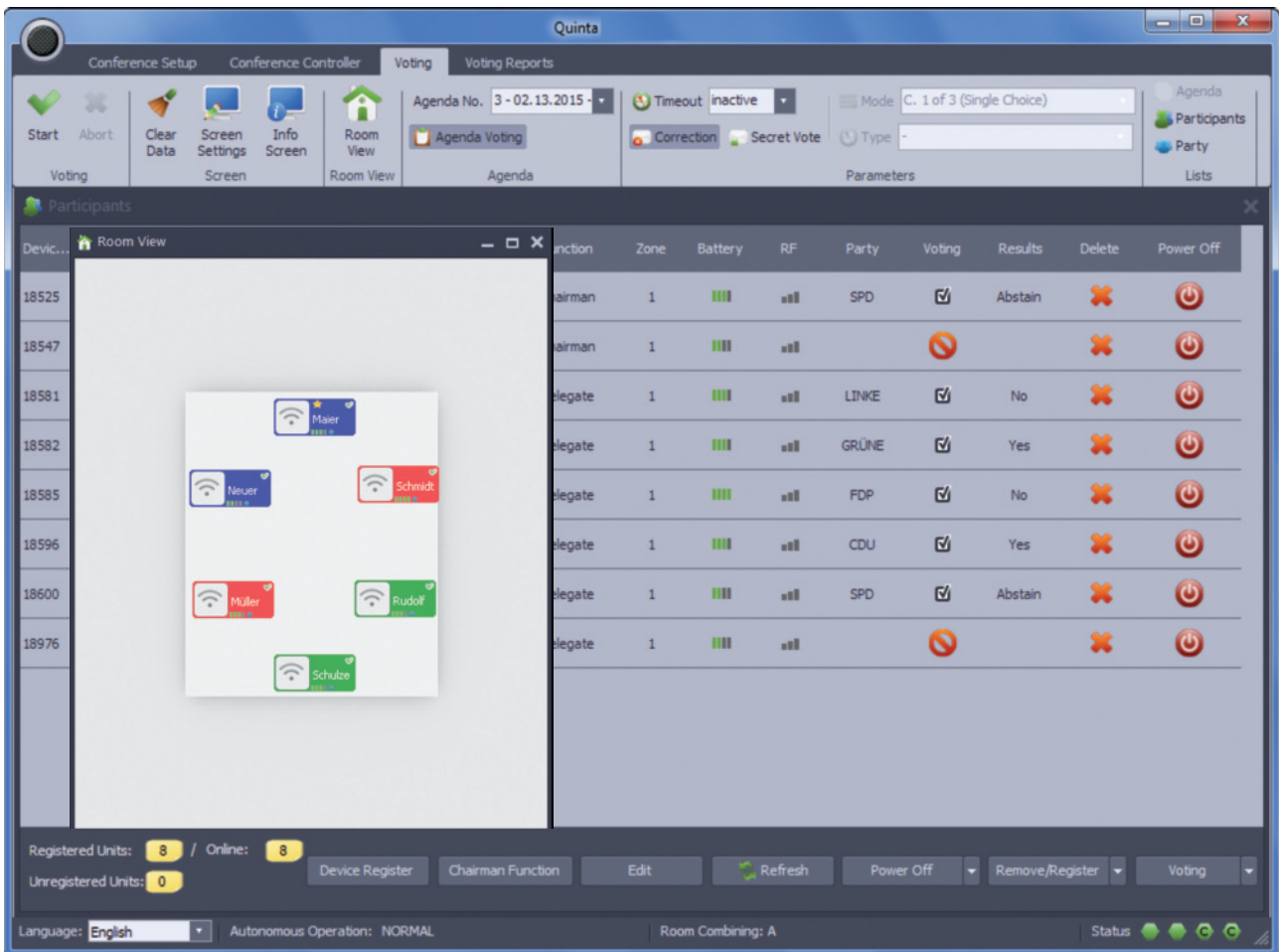
**Important:**

- “Offline Units” displayed. Should one or more microphone units fail during the voting (e.g. the device is turned off, battery is empty or the device is out of the radio range), then the number of “Offline Units” is immediately displayed after collecting the results in the “Voting Information” window. The operator of the system can react to this information and solve the problem and perform the voting again by pressing the “Repeat” button.
- Please note that during a voting the participants **with** voting microphone units cannot turn on the microphone. This does not refer to microphone units **without** voting function.
- When the Quinta software is operated in the controller mode, the operator can turn the microphone units on or off via the “Room View” window on then PC. Please refer also to chapter 7.3 “Room View”.



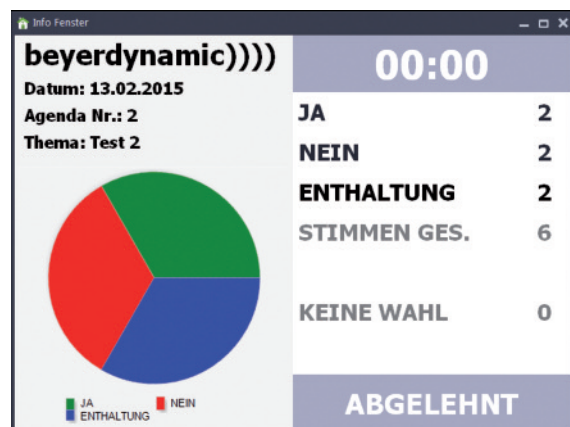
Voting information Start / End

- When the “Room View” and/or “Participants” windows are opened, you can see how each participant has voted, if it is no secret voting.



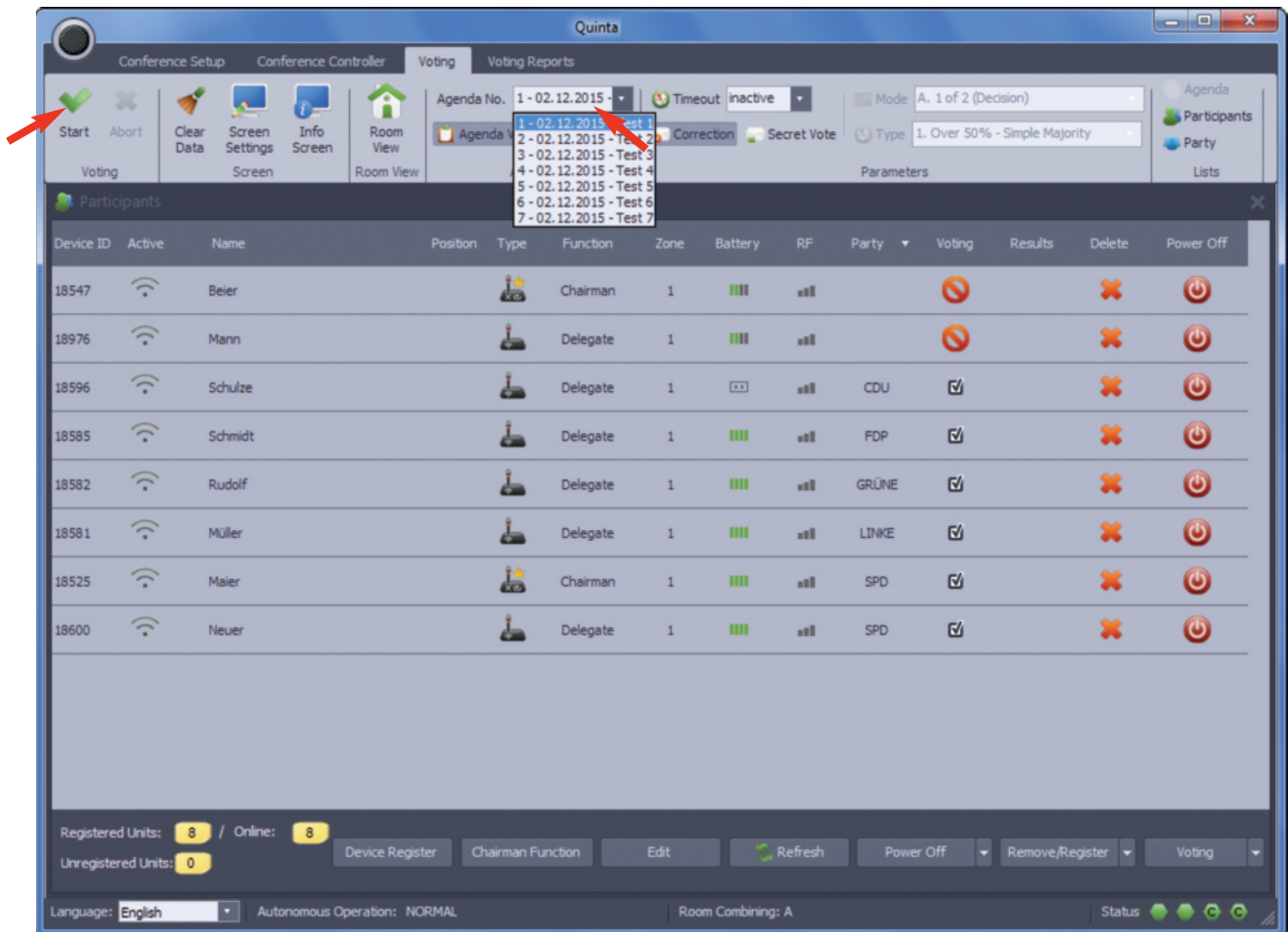
Display of voting results in the “Room View” and “Participants” windows

- In order to display the voting results on a separate screen select “Info Screen” in the menu bar. Depending on the setting in the menu item “Info Screen Settings”, the result is displayed as pie and bar chart.



Display of the voting result on a separate screen

- In the “Agenda No.” field the next item to be voted on is displayed automatically. But you can also choose any item from the drop-down menu under “Agenda No.”
- To start the voting on the next item, select “Start” again.



How to perform an agenda voting

### 6.3 Display/Export/Delete Voting Reports

- In the “Voting Reports” tab you can retrieve the results of all performed voting.
- You can select individual votings by highlighting them. In the lower part of the window there are general information, parameters and the result displayed alphanumerically as well as graphically as a bar. If it is an “Ad Hoc” voting, you can enter the subject of the voting and a comment or note.
- **How to group voting results**
  - “Flat”: Display of the voting results in a chronological order showing the latest voting result in the top line.
  - “Ageing”: Display of the voting results in a chronological order grouped in weeks showing the latest voting result in the top line.
  - “Group by party”: Display of the voting results grouped by the party membership of the participants.

“Group by vote”: Display of the voting results grouped by the votes (yes, no, abstention).  
 “No grouping”: Display of the voting results without grouping.

- **Filtering the voting results**

Furthermore, the display of the voting results can be filtered in the “Filtering” area.

“No filter”: There is no filter used.

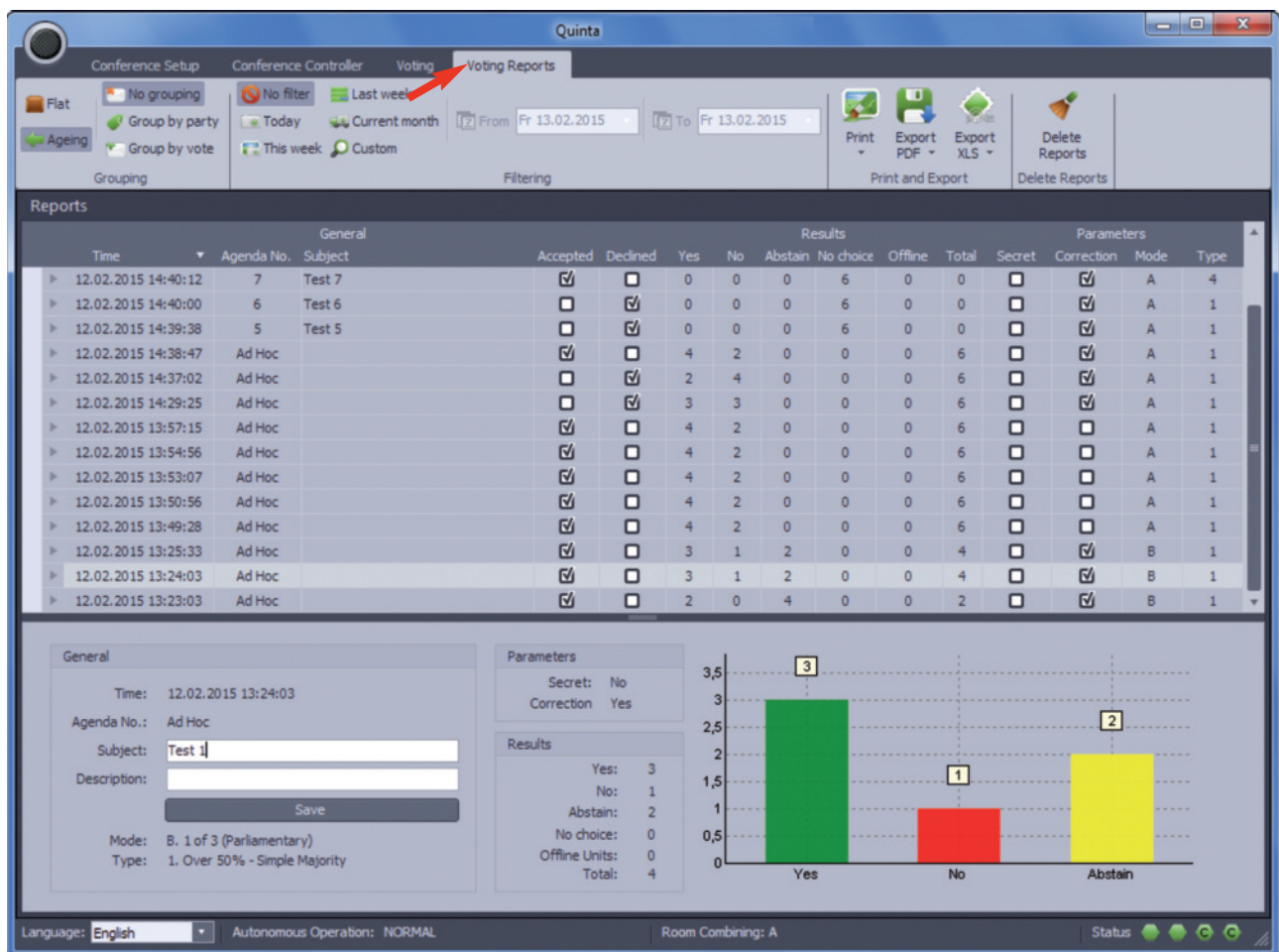
“Today”: The voting results of the current day are displayed.

“This week”: The voting results of the current week are displayed.

“Last week”: The voting results of the last week are displayed.

“Current month”: The voting results of the current month are displayed.

“Custom”: You can enter in the fields “From” and “To” the time period of which you would like to display the voting results.



Open Voting Reports tab and display voting results

- **Print and export voting results**

For archiving purposes you can print the voting results or export them as a file.

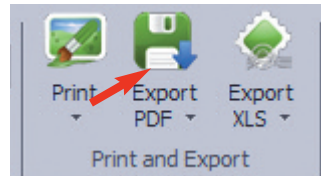
“**Print**”: You can print the voting results.

“**Export PDF**”: You can export the voting results as PDF.

“**Export XLS**”: You can export the voting results as Excel file.

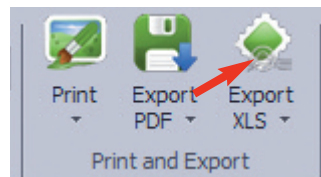
- **Delete voting reports**

“**Delete Reports**”: You can delete all voting results. For safety reasons this button can also be hidden or protected by a password. Please refer also to chapter 8.3 “Startup Settings”.



Time	General	Assigned	Declined	Yes	No	Abstain	No show	Other	Total	Secret	Comments	Print	Exp.
<b>13.02.2012 09:00:04</b> 2 Test 2													
13	Name	Party											
14	13046 Schuler	CDU											
15	13048 Ruchat	GRÜNE											
16	13052 Pfister	SPD											
17	13053 Pfister	SPD											
18	13055 Schenk	PDJ											
19	13060 Heuer	SPD											
<b>13.02.2012 09:00:08</b> 1 Test 1													
20	Name	Party											
21	13046 Schuler	CDU											
22	13048 Ruchat	GRÜNE											
23	13052 Pfister	SPD											
24	13053 Pfister	SPD											
25	13055 Schenk	PDJ											
26	13060 Heuer	SPD											
<b>13.02.2012 09:00:07</b> 2 Test 2													
27	Name	Party											
28	13046 Schuler	CDU											
29	13048 Ruchat	GRÜNE											
30	13052 Pfister	SPD											
31	13053 Pfister	SPD											
32	13055 Schenk	PDJ											
33	13060 Heuer	SPD											
<b>13.02.2012 09:00:19</b> 1 Test 1													
34	Name	Party											
35	13046 Schuler	CDU											
36	13048 Ruchat	GRÜNE											
37	13052 Pfister	SPD											
38	13053 Pfister	SPD											
39	13055 Schenk	PDJ											
40	13060 Heuer	SPD											

Export voting results as PDF



	A	B	C	D	E	F	G	H	I	J	K	L	M	N	O
1	Time	General	Assigned	Declined	Yes	No	Abstain	No show	Other	Total	Secret	Comments	Print	Exp.	
2	<b>13.02.2012 09:00:04</b>														
3	Name	Party													
4	13046 Schuler	CDU													
5	13048 Ruchat	GRÜNE													
6	13052 Pfister	SPD													
7	13053 Pfister	SPD													
8	13055 Schenk	PDJ													
9	13060 Heuer	SPD													
10	<b>13.02.2012 09:00:08</b>														
11	Name	Party													
12	13046 Schuler	CDU													
13	13048 Ruchat	GRÜNE													
14	13052 Pfister	SPD													
15	13053 Pfister	SPD													
16	13055 Schenk	PDJ													
17	13060 Heuer	SPD													
18	<b>13.02.2012 09:00:07</b>														
19	Name	Party													
20	13046 Schuler	CDU													
21	13048 Ruchat	GRÜNE													
22	13052 Pfister	SPD													
23	13053 Pfister	SPD													
24	13055 Schenk	PDJ													
25	13060 Heuer	SPD													
26	<b>13.02.2012 09:00:19</b>														
27	Name	Party													
28	13046 Schuler	CDU													
29	13048 Ruchat	GRÜNE													
30	13052 Pfister	SPD													
31	13053 Pfister	SPD													
32	13055 Schenk	PDJ													
33	13060 Heuer	SPD													
34	<b>13.02.2012 09:00:19</b>														
35	Name	Party													
36	13046 Schuler	CDU													
37	13048 Ruchat	GRÜNE													
38	13052 Pfister	SPD													
39	13053 Pfister	SPD													
40	13055 Schenk	PDJ													
41	13060 Heuer	SPD													
42	<b>13.02.2012 09:00:19</b>														
43	Name	Party													
44	13046 Schuler	CDU													

Export voting results as Excel file

## 7. Microphone Mode

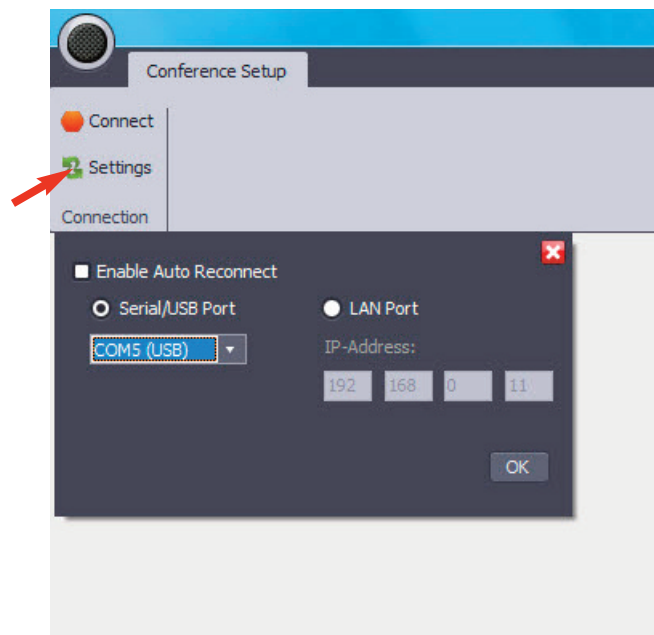
### Essential features:

- This operating mode is based on a “classic” multi-channel radio microphone receiver.
- Up to four microphones can be used simultaneously.
- These four microphones have a permanent audio connection to the control unit and, when required, they can be allocated to a defined audio channel and an analogue or digital audio output.
- The microphones are activated directly after turning on (it is possible to speak immediately) and when required they can be muted. For muting there are certain options available (e.g. Global Mute, Push-to-Mute etc.).
- When required the number of the microphones in use can be extended by cascading several control units.
- The microphone mode can be used with the Quinta CU and Quinta RS control unit.

### Important:

- The microphone mode only works when the firmware of the control unit, microphone units, boundary microphones and handheld transmitters is 3.0 or higher.
- The DSP version of the control unit **must be absolutely** 1.47 or higher so that the microphone mode will work. If the DSP version of the control unit is 1.44 the microphone mode will not work properly.

- Select “Settings” in the “Connection” area. A window will be opened in which you can select the port of your PC to which you have connected the Quinta CU/RS control unit.
- Select “COM/USB Port” if you have connected the control unit to the RS 232 interface or USB port of your PC. Select the correct “COM Port” from the drop-down menu.
- Select “LAN Port” if you have connected the control unit to the network port of your PC.  
Ex factory the IP address 192.168.1.55 is stored in the Quinta CU/RS control unit by default.
- Select the “OK” button to close the window.
- Select “Connect” to establish the connection between the PC and control unit. The other controls will be displayed in the menu bar, the red light changes to green and from “Connect” to “Disconnect”.
- If you select the “Enable Auto Reconnect” check box, the connection is made automatically when you restart the software.



Establish the connection between control unit and PC

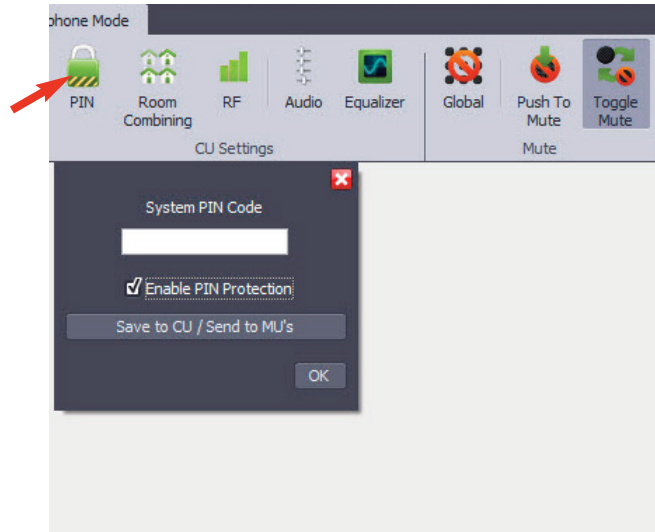


## 7.1 Settings for Control Unit

The settings in the “CU Settings” area are made for each control unit in the system.

### 7.1.1 PIN Code

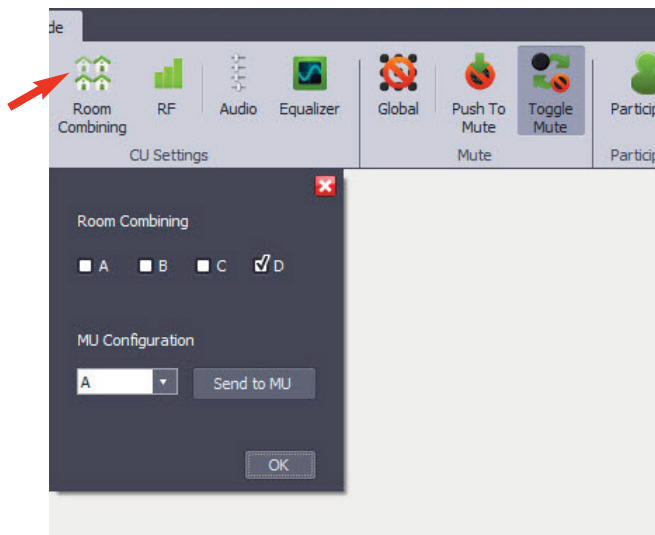
- To avoid unauthorised listening of the discussion, a PIN code can be entered for all microphone units of one system. This PIN code is stored within the microphone unit. Within the control unit it is stored if the PIN code is active or not.
- For a detailed description of this function, please refer to chapter 5.1.3.2 “How to Enter a PIN Code”.
- If you use several control units in the microphone mode, you must assign each control unit and the respective microphone units a PIN code or use the “Room Combining” function. Refer also to the chapters 5.1.3.2 “How to Enter a PIN Code” or 5.1.3.3 “Room Combining”.



Open “PIN Code” window and enter PIN Code

### 7.1.2 Room Combining

- The “Room Combining” function is used when you want to operate or combine several Quinta systems in different rooms (A, B, C, D).
- For a detailed description of this function, please refer to chapter 5.1.3.3 “Room Combining”.
- If you use several control units in the microphone mode, you must assign each control unit and the respective microphone units a PIN code or use the “Room Combining” function. Refer also to the chapters 5.1.3.2 “How to Enter a PIN Code” or 5.1.3.3 “Room Combining”.

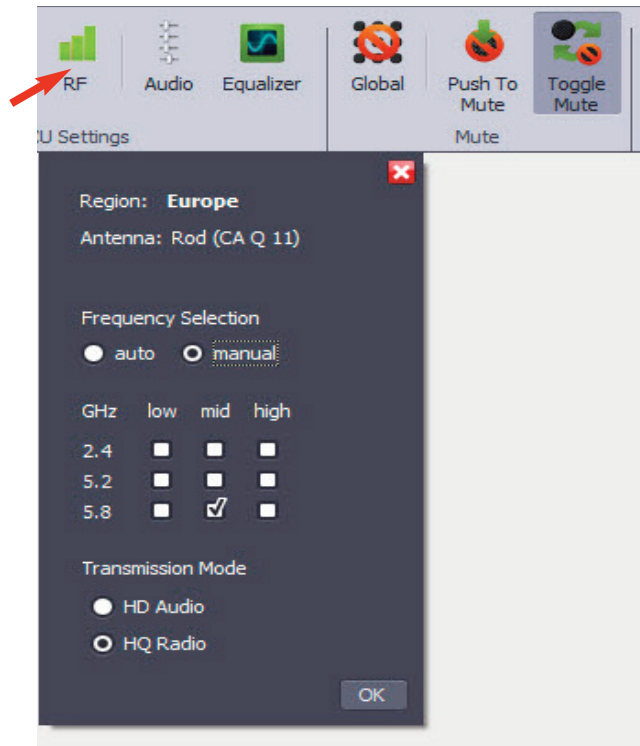


Select “Room Combining”



### 7.1.3 RF Settings

- Under “RF” you can select the requested frequency band.
- Select “RF” to open the appropriate window.
- The settings of the initial operation of the control unit such as region, antenna and antenna cable will be displayed.
- For a detailed description of this function, please refer to the chapter 5.1.3.4 “RF Settings”.



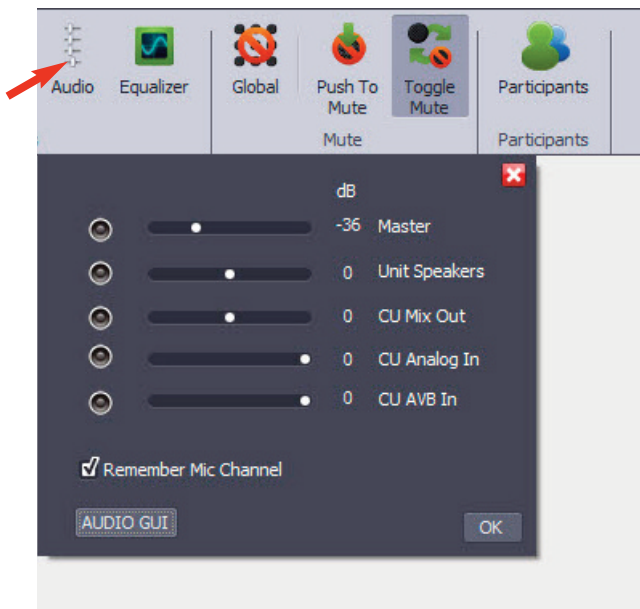
Select RF settings

### 7.1.4 Audio Settings

- Select “Audio”.
- In the opened window you can set the volume:
  - Master: controls the overall volume of the system.
  - Unit Speakers: controls the volume of the integrated loudspeakers of the microphone units.
  - CU Main Out: controls the volume of the MIX outputs of the control unit.
  - Analog In: controls the volume of the analogue input of the control unit.
  - AVB In: controls the volume of the AVB input of the control unit.
- You can mute each volume control by selecting the appropriate loudspeaker icon.
- In the “Audio” window you can select the “Remember Mic Channel” function. If this function is activated, the microphone will “remember” the channel on which it allocates and when it is activated next time, it will allocate on this channel again. If this function is not activated, the microphone will allocate on the next free channel.

**Note:**

The “Remember Mic Channel” function affects both the registration of the microphones in the device list and the automatic of the microphone connection with the control unit! For detailed information, please refer to chapter 7.1.4.1 “The “Remember Mic Channel” function”.

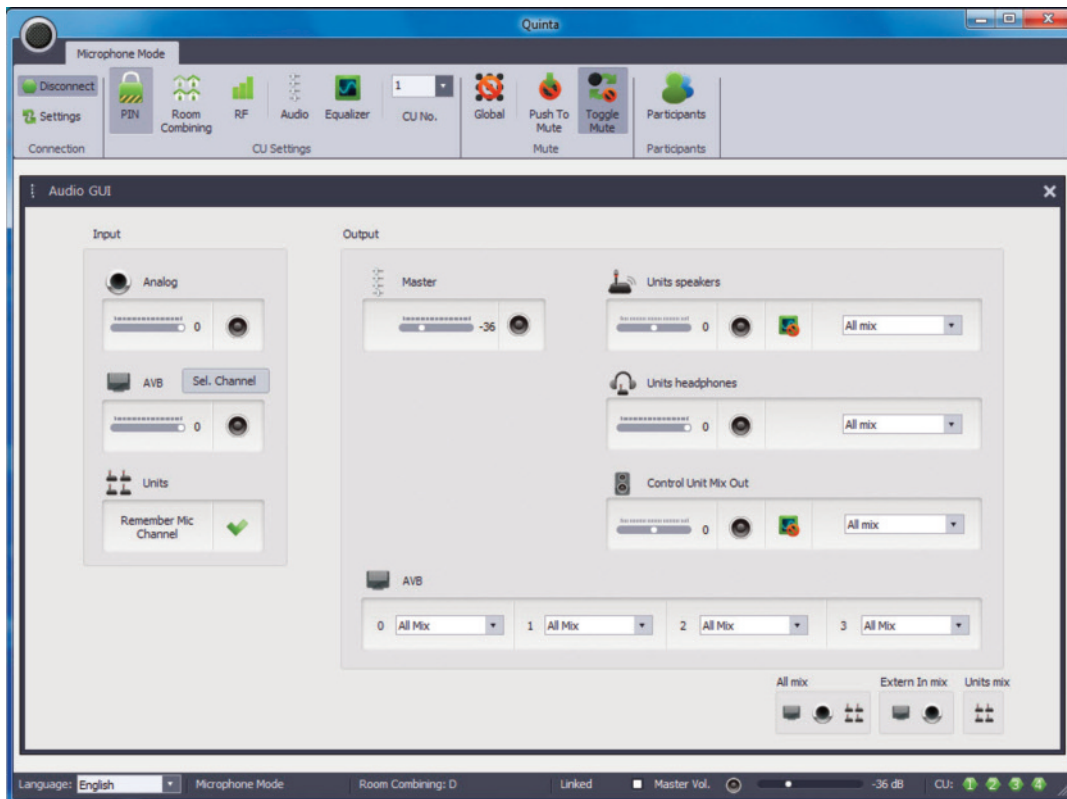


Select Audio settings

- By selecting the “AUDIO GUI” button a detailed graphical picture will be displayed.
- In the “AUDIO GUI” window you can select different mix settings for the loudspeakers of the microphone units, headphones connected to the microphone units as well as the main output and the AVB connection of the control unit.
- You can select which signal is to be routed to the respective output.
- If you select “All Mix”, the mix of all signals from the analogue input, AVB input and the microphone units is imported.
- If you select “Ext. Mix”, the signals from the analogue input and AVB input are imported.
- If you select “Units Mix”, the microphone signals of the microphone units are imported.
- In the “Audio GUI” window you can select the “Remember Mic Channel” function. The activated function is displayed by a green hook. If the function is not activated, a red “X” is displayed.

**Note:**

The “Remember Mic Channel” function affects both the registration of the microphones in the device list and the automatic of the microphone connection with the control unit! For detailed information, please refer to chapter 7.1.4.1 “The “Remember Mic Channel” function”.



“Audio GUI” window

- In the status bar at the bottom you can also use the “Master Vol.” slide control to set the overall volume of the system.
- If there are several control units in the system you can set the same overall volume for all control units by ticking the “Linked” check box.
- By clicking the loudspeaker symbol you can mute the volume control.



volume control active



volume control inactive

### 7.1.4.1 The Function “Remember Mic Channel”

As mentioned in chapter 7.1.4 “Audio Settings”, the function “Remember Mic Channel” can be set in the Audio drop-down menu and in the Audio GUI window. In the following it is described how the microphones behave when this function is activated or deactivated.

#### “Remember Mic Channel” deactivated (check box unticked)

- Up to four microphones can be allocated to one control unit. The audio channels 1 to 4 will be allocated to the microphones in the same order as the microphones are turned on. This principle applies to each new power on procedure.
- When all four channels are occupied (four microphones are turned on and connected with the control unit), further microphones cannot be accepted. Additional microphones are automatically turned off when they try to connect with the control unit.
- If a switched-on microphone is switched off, it is displayed with the “offline” symbol in the participants list. If an additional “new” fifth microphone is switched on, the new microphone allocates on the channel of the switched off microphone. The switched off microphone is replaced in the participants list by the new switched on microphone.

#### “Remember Mic Channel” activated (ticked check box)

- Up to four microphones can be allocated to one control unit. Each microphone that is switched on, is allocated to a channel. This channel remains reserved in the control unit for this microphone until it is manually deleted from the participants list. Up to four microphones can be registered in the participants list and remain until they are deleted manually, even when the control unit and/or microphone is switched off and on again. The audio channels once allocated remain the same as before, when the devices are turned on again. The channels can be changed manually in the list.
- **Warning:** When four microphones are registered in the participants list, these channels remain permanently reserved and cannot be taken by other microphones. “New” microphones are not accepted even when all registered microphones are switched off and the audio channel are theoretically available. When “new” microphones are connected to a control unit where all four places in the list are already reserved, the new microphone is not accepted and turned off automatically.
- An new microphone is only accepted when a switched off microphone is manually deleted from the list.
- In order to clear the list, there are the following options available:
  - directly in the participants list of the Quinta software via the “Delete” column
  - by pressing the countersunk “Clear Mic List” button on the Quinta RS control unit
  - via the displayed menu on the Quinta CU control unit by pressing the headphone volume control for approx. 3 seconds and selecting the “Clear List” menu option.



Participants - four microphones are allocated to all audio channels of one control unit



Participants - one microphone is switched off (channel 1)



Participants - the switched off microphone has been deleted manually

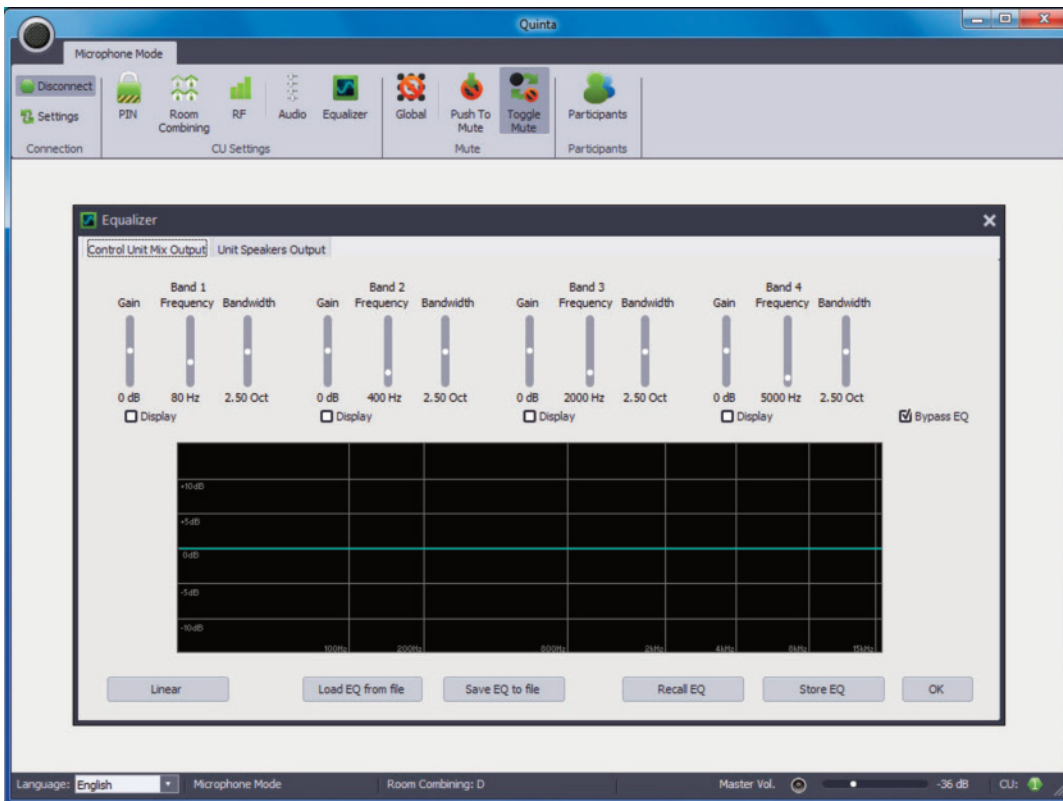


Participants - a new microphone is switched on (channel 1)

If the “Remember Mic Channel” function is deactivated, the new microphone will automatically allocate on this channel. If the “Remember Mic Channel” function is activated, the new microphone will only allocate on this channel when the old microphone is deleted from the list.

### 7.1.5 Equalizer

- An equalizer is used for signal processing, i.e. the sound of the signal is adapted to the room.
- In this menu you have a fully parametric equalizer with 4 bands. In each band you can select the following sound settings for the **microphone unit's loudspeakers** or **external loudspeakers**.
- Select “Equalizer” and open the appropriate window. Here you can enter settings for the master output of the control unit (“Control Unit Main Output” tab) and for the loudspeakers of the microphone units (“Unit Speakers Output” tab). You can adjust the master gain and the centre frequency, gain and bandwidth for up to four frequency bands. The different settings are displayed in the window below.
- For a detailed description of this function, please refer to chapter 5.1.4.4 “Equalizer”.



Set the equalizer

## 7.2 Mute Settings for Microphones

- The settings in the “Mute” area refer to all microphones even when they belong to different control units in the system.
- In the “Mute” area the functions “Global”, “Push-To-Mute” and “Toggle Mute” are available.

### Global

- When you activate this function, all microphones are muted, when a microphone is muted via the microphone button.
- If you use several control units in the microphone mode, the microphones of all connected control units are muted.
- If this function is not activated, only the microphone, whose microphone button is pressed, is muted.

### Push-To-Mute

- When you activate this function, the microphone is muted as long as the microphone button is pressed. The microphone button will illuminate red while it is pressed. When you release the microphone button, it will illuminate green.

### Toggle Mute

- When you activate this function, the microphone will be muted when you briefly press the microphone button. The microphone button will illuminate red. When you briefly press the microphone button once again, the microphone is open again and the microphone button will illuminate green.



Push-To-Mute is activated



Push-To-Mute and Global are activated



Toggle Mute (on/off) is activated



Toggle Mute and Global are activated

### 7.3 Participants List

- In order to open the participants list select the appropriate menu option.
- In the participants list the microphones are automatically registered when they are switched on in the same order as they are switched on, i.e. the first microphone is allocated to channel 1, the second to channel two and so on.

• **Device ID**

In the “Device ID” column you will find the ID of the microphone unit which can be found on the unit itself. It cannot be edited.

• **Status display of the microphone**

In the next column the status of the microphone is displayed.



Microphone is activated



Microphone is muted



Microphone has been turned off, removed or is out of range

• **Name**

The “Name” column displays the device number of the appropriate device. It can be edited and replaced by the name of the participant when you click with the right mouse button directly on the number.

• **Type**

The “Type” column displays if the device is a Quinta MU microphone unit, a Quinta TB boundary microphone or a Quinta TH handheld transmitter.

• **Channel**

The “Channel” column displays on which channel or output of the control unit the microphone has been allocated. When you click with the right mouse button on the channel of a device, a drop-down menu will be displayed and you can select on which channel you want to allocate the device. The places are simply swapped: for example you want to change the device from channel 1 to channel 2, channel 1 becomes channel 2 and the previous channel 2 becomes channel 1.

• **Volume**

In the “Volume” column you can set the volume for each device/channel via an individual slide control.

• **Battery**

The “Battery” column displays the battery status of the appropriate device.

• **RF**

The “RF” column displays the RF reception quality.

• **Delete**

In the “Delete” column you can delete the appropriate device from the list by clicking the red “X” with the right mouse button.

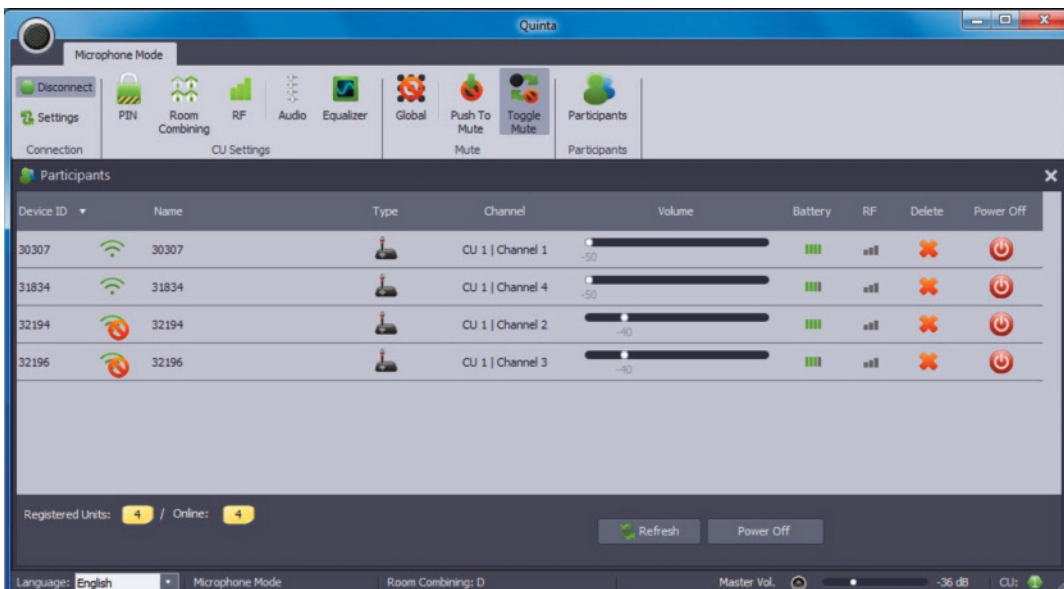
You can also delete the list without the Quinta software on the control unit itself:

Quinta RS: Press the “Clear Mic List” button.

Quinta CU: Press the volume control and turn it until the menu option “Clear MU List” is displayed. Press the volume control and turn to select “Press to Clear”. Press the volume control once again to clear the list.

• **Power off**

In the “Power off” column you can switch off the device by clicking with the right mouse button on the appropriate power off symbol. The device must be manually turned on.

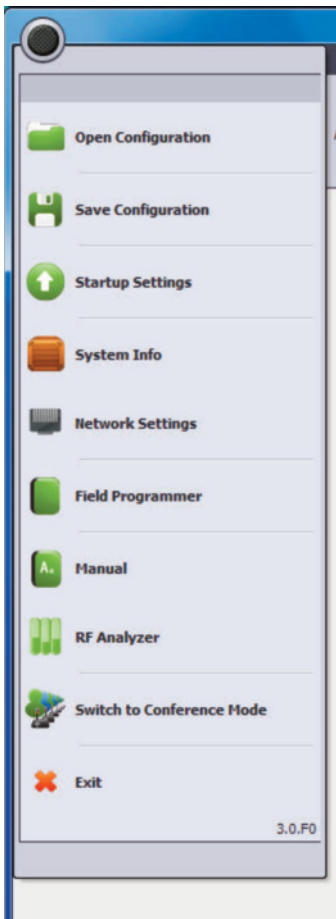


Participants list (device list)



## 7.4 More Functions

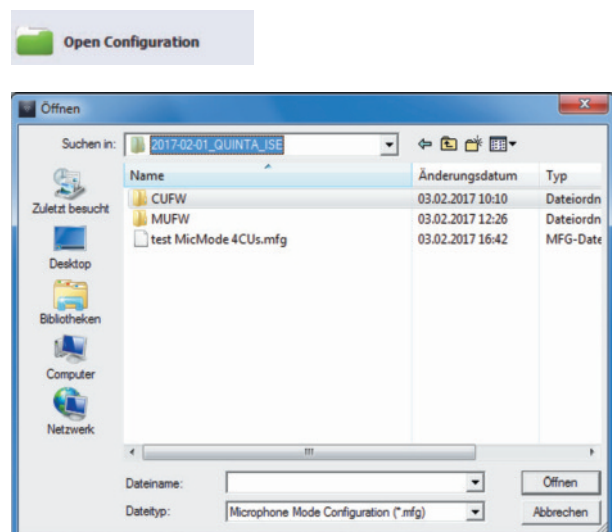
If you click in the Microphone Mode of the Quinta software on the black button at the top left, you can open a menu where you will find more functions.



Open the menu with more functions

### 7.4.1 How to Open a Configuration

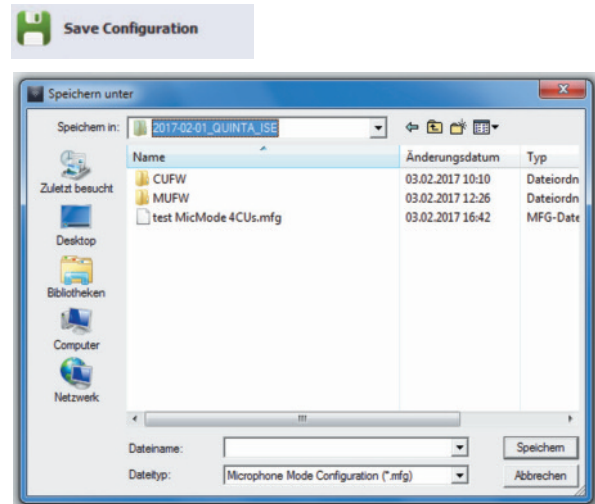
- In order to open an existing configuration, select “Open Configuration”.
- A dialogue box will be opened, where you can select the requested configuration.
- Select the “Open” button to open the selected configuration.





## 7.4.2 How to Save a Configuration

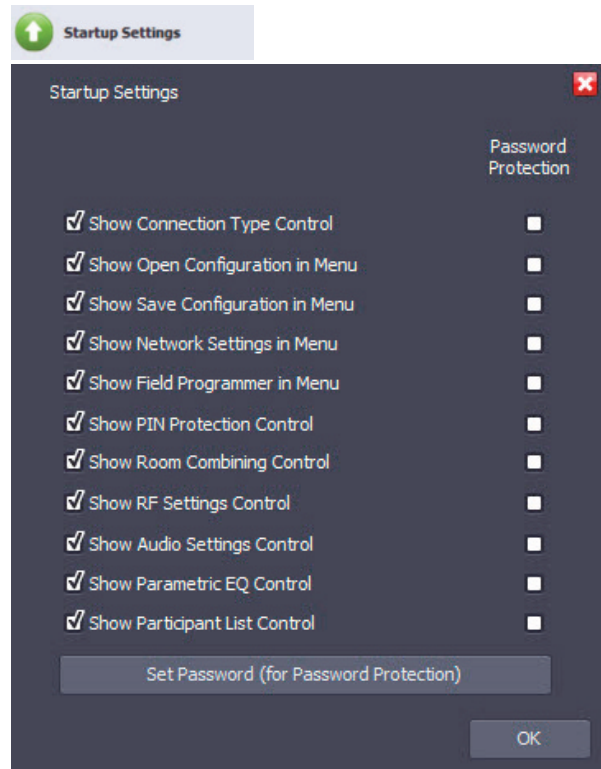
- To save a configuration select “Save Configuration”.
- A dialogue box will be opened where you can enter a name for the configuration and save it.
- Select the appropriate location where you want to save the configuration and select the “Save” button.
- A configuration contains:
  - the list of participants with names
  - audio settings
  - mute settings
  - GUI and password settings (7.4.3)
  - connection settings for AUX control units



Save a new configuration

## 7.4.3 Startup Settings

- Select “Startup Settings” when you want to select which sub-menus are to be displayed in the Quinta Software in the microphone mode and which menus are to be protected with a password.
- If some menus are not to be displayed, remove the tick from the appropriate check box and select “OK”. By hiding individual menus you can avoid that other users change system configurations accidentally.
- If you want to protect the Quinta system with a password, select the “Set Password (for Password Protection)” button. Enter the requested password into the field “New Password” and confirm it by entering it again into the field “Confirm new password”. Afterwards, select the “OK” button.  
The password is stored in the control unit and the PC connected to the control unit. It is valid for the whole Quinta system. It must also be used as login when using the **Quinta Web Server** or when connecting another PC to the control unit. When you want to access the control unit externally via RS 232 or Ethernet (e.g. media control system), you must also enter the password.
- If you want to protect certain menus with this password, tick the appropriated check box in the “Password Protection” column. The password is only stored on the PC connected to the control unit.
- If you want to change an existing password, select the “Set Password” button and enter the current password. Afterwards you can enter the new password and confirm it once again. The message “Password has been changed!” will be displayed. Now the new password will be active.
- If you want to delete the password, enter the old password, leave the other two fields below empty and select the “OK” button.
- If the Controller mode is to be started immediately when the software is started, tick the “Start in Controller Mode” check box and select the “OK” button. When the Quinta software is started again, the Controller mode will be started immediately.



Configure startup settings

### 7.4.4 System Info

- Select “System Info” if you want to check if the control unit, PC software, licensing and microphone units are up-to-date. The firmware version of the control unit and all registered microphone units is displayed here.
- Select the “Export to File / Clipboard” button to save the System Info in a text file.
- With the “Reset Antenna Settings” button you can reset the entries for region, antenna and antenna cable made with the initial operation. This is important when the system is used in different region, e.g. in the rental business.



**Warning:** This does not refer to USA, Canada and Japan. Settings for USA, Canada and Japan are permanently applied and cannot be changed.

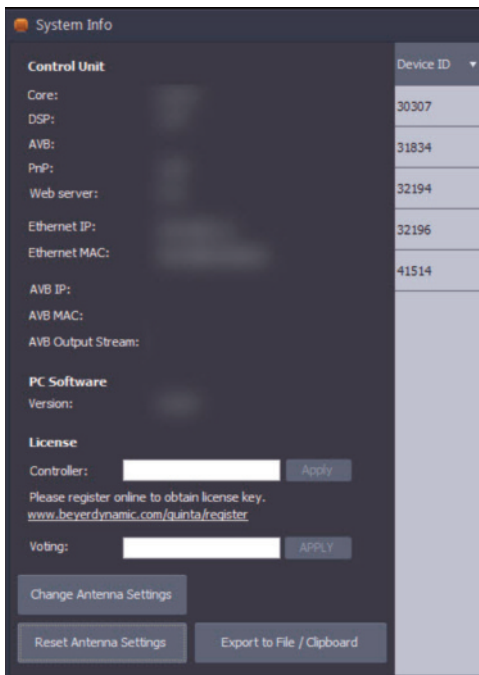
- If you want to reset the antenna settings, the Quinta CU displays the menu for region selection. The Quinta RS control is reset to the factory setting “global region” i.e. only 2.4 GHz is active. Depending on the region the RF bands in the 5.2\* or 5.8\* GHz range are also available.

- When the Quinta RS control unit is turned on for the first time, it is set to the RF band of 2.4 GHz\* which has been selected at the factory. In order to select your region click the “Change Antenna Settings” button.
- In the “Select Region” window select the region in which you are using the control unit.

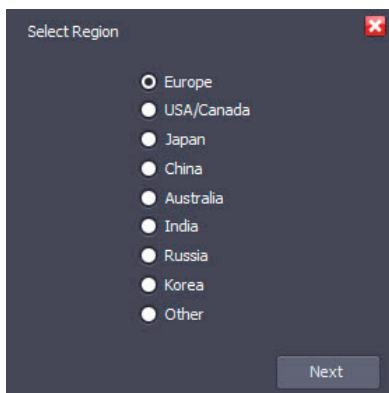
**Important:**  
**Wrong settings in the “Select Region” window can lead to an illegal operation of the system!**

- Click the “Next” button.
- Select the antennas connected to the control unit and click the “Next” button.
- In order to confirm your settings click the “Confirm” button. The control unit will restart automatically.

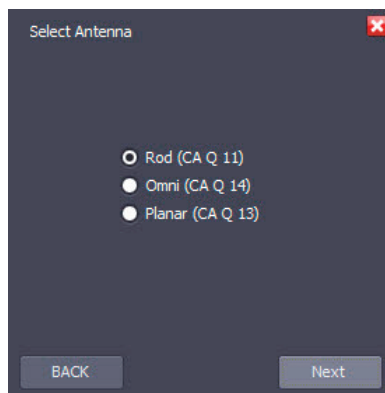
**\*Note:**  
 The availability of the RF bands 2.4; 5.2 or 5.8 GHz depends on the selected region.



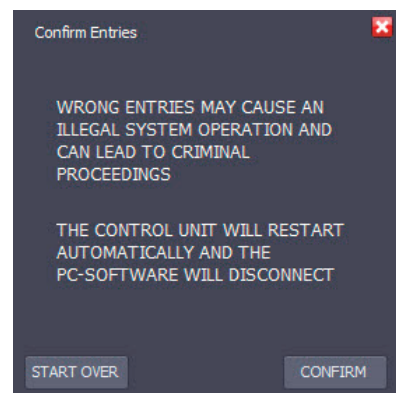
Display of licensing and firmware version



Select region



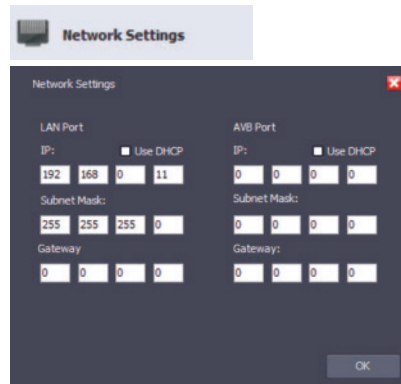
Select antennas



Confirm entries

### 7.4.5 Network Settings

- Select “Network Settings” when the Quinta conference system operates in a network.
- For the Ethernet interface you can manually enter information about the IP address, subnet mask or gateway or allocate via a DHCP server when you tick the “Use DHCP” check box. You must restart (turn off and on again) the control unit so that the IP address allocated by a DHCP server is accepted.
- For the AVB interface you can manually enter information about the IP address, subnet mask or gateway or allocate via a DHCP server when you tick the “Use DHCP” check box.  
**Note:** At the AVB interface commands cannot be used. For this the Ethernet interface is available.
- **Important:** If you use several control units in the microphone mode, the information of the selected control unit are displayed in this window.



Configure network settings

### 7.4.6 Field Programmer

- The “Field Programmer” function is used for reprogramming the hardware components of the Quinta system. With the “Field Programmer” you can update the following system components:

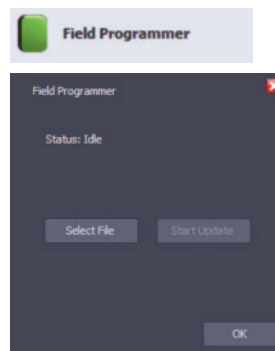
Control unit:                   - Kernel  
                                       - DSP  
                                       - AVB Module

Microphone units:           - Kernel

- In order to receive information about available updates, please register your Quinta system at: [www.beyerdynamic.com/quinta/register](http://www.beyerdynamic.com/quinta/register).
- A system update also includes detailed installation instructions.

**Important:**  
 The “Field Programmer” function should be operated by qualified and instructed staff only.

- **Important:** If you use several control units in the microphone mode, the information of the selected control unit are displayed in this window.



Updating system components

### 7.4.7 Manual

- In order to open the manual select “Manual”.



Select the “Manual” menu option

### 7.4.8 RF Analyzer

- The “RF Analyzer” displays how much the frequency range is already used by other devices that use the same frequencies (e.g. other Quinta systems, WiFi, etc.) .
- Select “RF Analyzer” to find out which frequency band is most suitable.
- To interpret the displayed values correctly, a detailed knowledge about other wireless technologies is required. A WiFi network, for example, is only displayed with higher values when data traffic is actually used. It is not displayed of which type of wireless technology the devices are that show values. The bars are an indicator that indicate the current wireless energy / time on the specific frequencies.
- **Important:** If you use several control units in the microphone mode, the RF activity of the selected control unit is displayed in this window.



Display of existing RF activity

### 7.4.9 Conference Mode

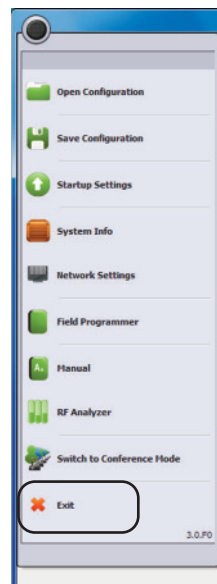
- In the Conference Mode all devices (microphone unit, boundary microphone and handheld transmitter) have the functionality of a conference unit.
- If you want to access the conference mode, select the “Switch to Conference Mode” option from the black dot menu. The control unit will be restarted and has to be connected with the software again.



Select “Switch to Conference Mode” option

### 7.4.10 How to Close the Program

- To close the Quinta software select “Exit”.



## 7.5. Microphone Mode in Use with Several Control Units

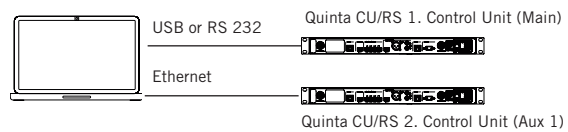
In the microphone you can operate a maximum of four microphones with one Quinta CU/RS control unit simultaneously. If you want to use more microphones simultaneously, you need more Quinta CU/RS control units. For reasons of typical local conditions when using the radio spectrum (WLAN), we recommend that you do not use more than four Quinta CU/RS control units simultaneously so that you have a maximum of 16 microphones available.

### 7.5.1 Connection

- The first control unit can be connected via USB, RS 232 or Ethernet.
- The second and more control units can be connected via Ethernet.
- In the following we introduce three typical applications out of a number of many connection possibilities.

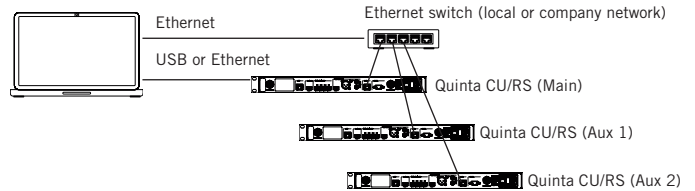
#### Application 1: Connect the control units to the PC directly

- You are using two Quinta CU/RS control units.
- Connect the first control unit via USB or RS 232 to your PC.
- Connect the second control unit via Ethernet to your PC. Make sure that you connect the Ethernet cable to the LAN connection of the control unit.



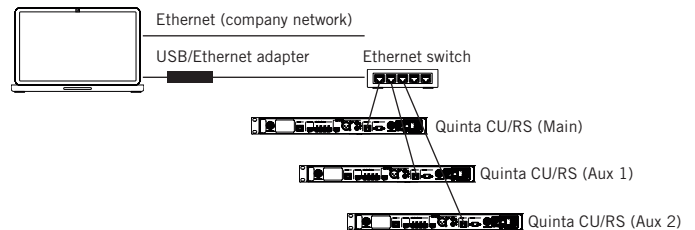
#### Application 2: Connect the control units via a network

- You are using more than two Quinta CU/RS control units.
- In this case you need an Ethernet switch.
- Connect the Ethernet switch to your PC and if necessary to the company network.
- Connect the first control unit via USB or RS 232 to your PC or via Ethernet to the Ethernet switch.
- Connect the other control units to the Ethernet switch.



#### Application 3: Connect the control units via a USB/Ethernet adapter to a network

- Connect your PC via Ethernet to the network.
- Connect a USB/Ethernet adapter to your PC. Settings such as IP-address, subnet mask, gateway and driver for the adapter are manufacturer specific and should be advised by the local IT staff.
- Connect an Ethernet switch to the USB/Ethernet adapter.
- Connect the control units to the Ethernet switch.



### 7.5.2 How to Allocate IP Addresses to the Control Units without DHCP

All control units are supplied with the same IP address set at the factory. In order to work with several control units simultaneously, you must allocate each control unit a separate IP address.

**Important:** The control units **must not** be connected to the switch altogether and **turned on simultaneously**.

Please proceed as described in the following.

1. Start the microphone mode of the Quinta software.
2. Turn on one control unit, which has been connected via Ethernet.
3. Open the "Settings" window and select the LAN port.
4. Select "OK" or "Connect" to connect the control unit with the software.
5. Select the "Network settings" option of the black dot menu.
6. If the "DHCP" check box is ticked, please untick it.
7. Enter the desired IP address in the "IP" fields. If necessary, please contact your IT staff regarding IP address, subnet mask and gateway.
8. If the IP address is entered when an connection exists, the new IP address is immediately valid and the connection between software and control unit is automatically disconnected.
9. Enter the IP address previously entered in the "Network settings" window into the "Settings" window and click the "OK" or "Connect" button to connect the control unit with the software again.
10. Follow the steps described from 2. to 9. for each control unit connected.

### 7.5.3 Allocation of Dynamic IP Addresses via DHCP

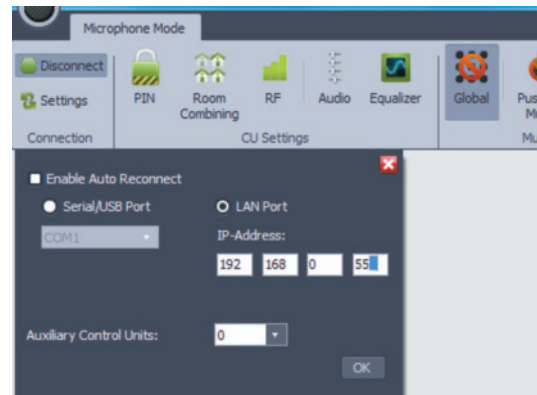
If the DHCP check box is ticked in the "Network settings" window, the IP addresses are automatically assigned to all control units connected to the software via a DHCP server.

**Warning:** Changes in the DHCP settings require a restart of the control unit, i.e. the control unit in question must be turned off and on again. If necessary, please contact your IT staff.

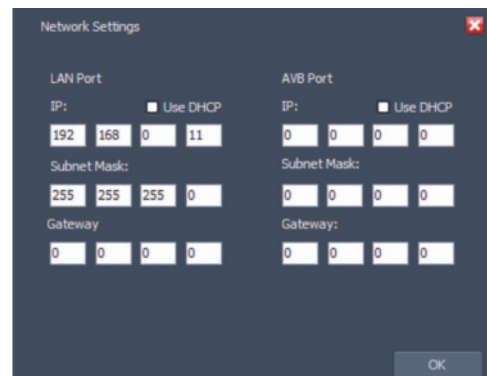
### 7.5.4 Troubleshooting

**The control unit cannot be connected with the software:**

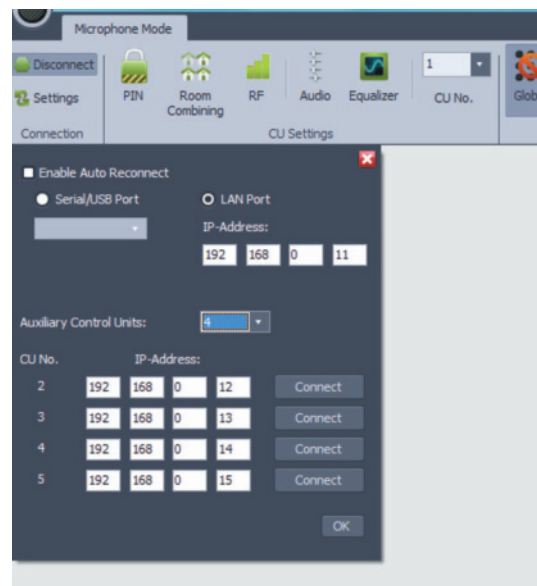
- Check whether the control unit is operating in the microphone mode. The Quinta CU displays the mode. With the Quinta RS you need the software to find out if the control unit is in the microphone mode ("Microphone Mode" tab) or conference mode ("Conference Mode" tab).
- If the control unit is operating in the microphone mode and still cannot connect, please check the firmware of the control unit in the "System info" window. It must be 3.0.0 or higher.
- If the "Microphone Mode" menu option is not displayed in the black dot menu, you must update the firmware of the control unit.
- Check whether the control unit is actually connected via the LAN port (the AVB port is also an RJ45 socket!).



Settings - connect the control unit via the LAN port with the IP address set at the factory



Network settings - enter new IP address



Settings - connect control unit with new IP address via LAN



### 7.5.5 Display of the Connected Control Units

The number of control units that are operated in the microphone mode is displayed in the lower right corner under “CU:”.

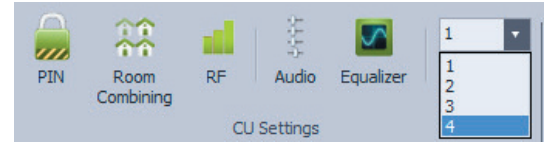
The control units connected to the software are displayed in green, the control units that are not connected to the software are displayed in red.



Green = control unit is connected to software  
Rot = control unit is not connected to software

A control unit can be selected from the “CU No.” drop-down menu at the top in the menu bar. The following settings are made for the control unit selected in the drop-down menu:

- PIN
- Room Combining
- RF, Audio
- Equalizer
- System Info
- Network Settings
- RF Analyzer

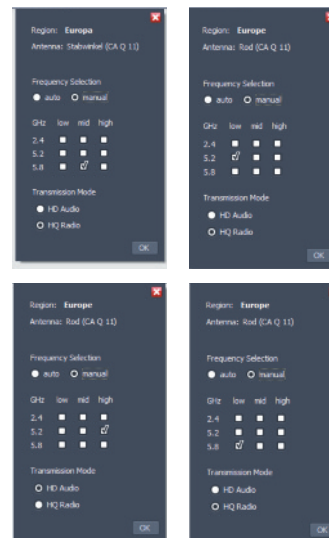


CU No. drop-down menu

### 7.5.6 Frequency Allocation

If you work with several control units in the microphone mode, we strongly recommend to assign each control unit a different frequency in the range of frequencies permitted in your region to avoid interference.

- In the menu bar select e.g. control unit 1 from the “CU No.” drop-down menu.
- Open the appropriate window by clicking on “RF” in the menu bar.
- For the first control unit e.g. select the frequency 5.8 mid.
- In the menu bar select e.g. control unit 2 from the “CU No.” drop-down menu.
- Open the appropriate window by clicking on “RF” in the menu bar.
- For the second control unit e.g. select the frequency 5.2 low.
- Proceed in the same way with the other control units.

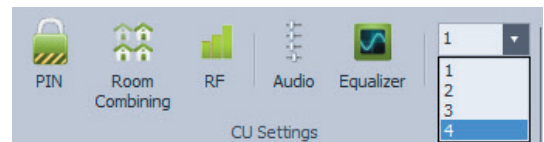


Frequency allocation with several control units

### 7.5.7 Enter a PIN Code / Room Combining

If you are working with several control units in the microphone mode, you **must** assign a PIN or separate room to each control unit and their microphones so that the microphones can allocate to the appropriate control unit.

- In the menu bar select the control unit from the “CU No.” drop-down menu to which you want to assign a PIN code or a room.
- Activate the appropriate microphones.
- Please refer to chapter 5.1.3.2 “How to Enter a PIN Code” to find detailed information on how to assign a PIN code.
- Please refer to chapter 5.1.3.3 “Room Combining” to find detailed information on how to assign a room.



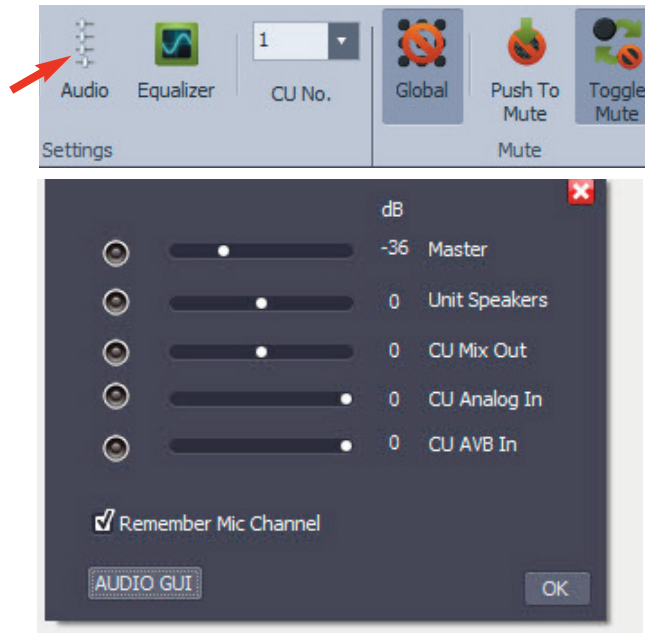
Select the control unit for which you want to enter a PIN code or room



### 7.5.8 Audio

The audio settings are also selected separately for each control unit.

- In the menu bar in the “CU No.” drop-down menu select the respective control unit for which you want to make audio settings.
- In both the “Audio” window and the “Audio GUI” window, you can activate the “Remember Mic Channel” function. If this function is activated, the microphone “remembers” the channel to which it has been allocated and re-allocates to this channel the next time it is switched on. If this function is not activated, the microphone allocates to the next free channel.
- Please proceed as described in chapter 7.1.4 “Audio Settings”.
- If the “Linked” check box is ticked in the status bar, the set master volume applies to all control units.



Select audio settings

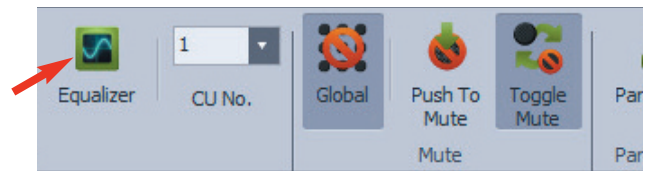


Activate the same volume for all control units

### 7.5.9 Equalizer

The equalizer settings are also made separately for each control unit.

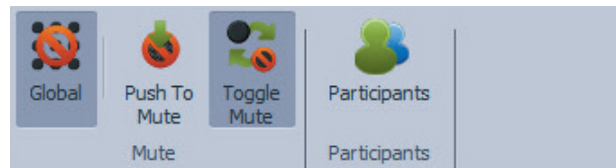
- In the menu bar in the “CU No.” drop-down menu select the control unit for which you want to select equalizer settings.
- Please proceed as described in the chapters 5.1.4.4 and 7.1.5 “Equalizer”.



Select equalizer settings

### 7.5.10 Mute

The mute settings refer to **all** microphones. You will find a detailed description of the mute settings in chapter 7.2 “Mute Settings for Microphones”.



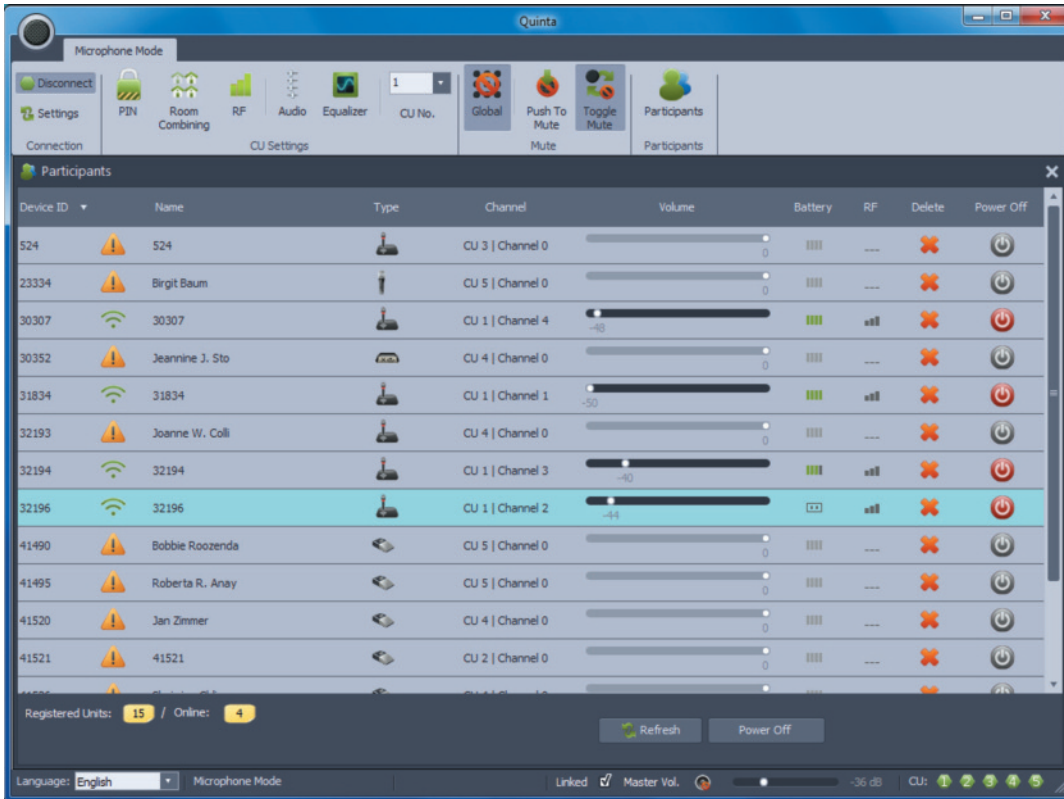
Select mute settings

### 7.5.11 Participants

All microphones are displayed in the participants list, no matter to which control unit the individual microphone belongs to.

**Important:** If all radio channels (four per control unit) are occupied and further microphones are switched on, these microphone are immediately switched off automatically.

For more information about the individual columns in the participants list, please refer to chapter 7.3 "Participants List".



Participants list with microphones belonging to different control units

[www.beyerdynamic.com](http://www.beyerdynamic.com)



---

**beyerdynamic GmbH & Co. KG** . Theresienstr. 8 . 74072 Heilbronn . Germany  
Tel. +49 7131 617 - 0 . Fax +49 7131 617 - 204 . [info@beyerdynamic.de](mailto:info@beyerdynamic.de)

For further distributors worldwide, please go to [www.beyerdynamic.com](http://www.beyerdynamic.com)  
Non-contractual illustrations. Subject to change without notice.

EN 5/BA Quinta Software (03.17)